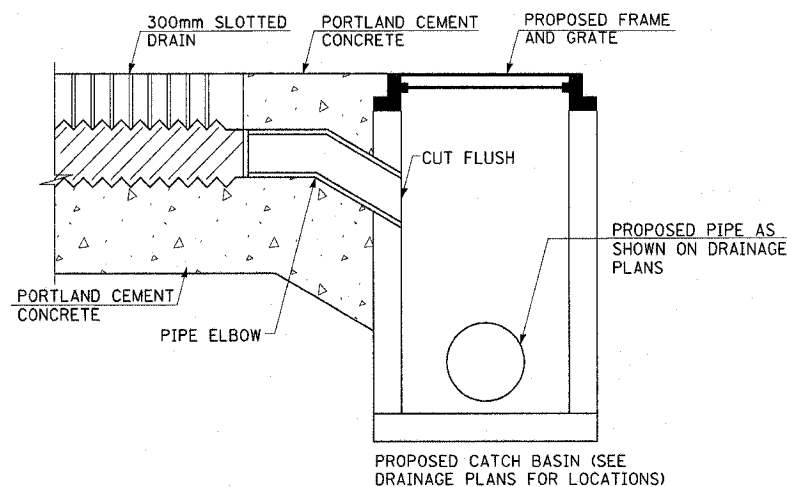
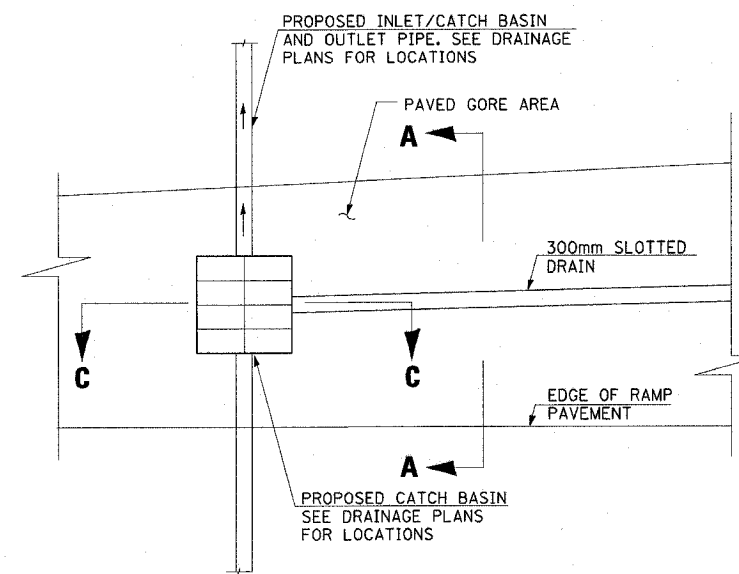


F.A.I. RTE.	SECTION	COUNTY	TOTAL SHEETS	SHEET NO.
80/94	0203.1B	COOK	200	46
STA.		TO STA.		
FED. ROAD DIST. NO. 1		ILLINOIS FED. AID PROJECT		
CONTRACT #62854				

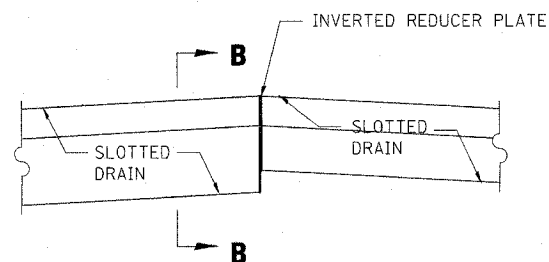
ALL DIMENSIONS IN MILLIMETERS UNLESS OTHERWISE NOTED



SECTION C-C
CONNECTION TO PROPOSED CATCH BASIN



PLAN



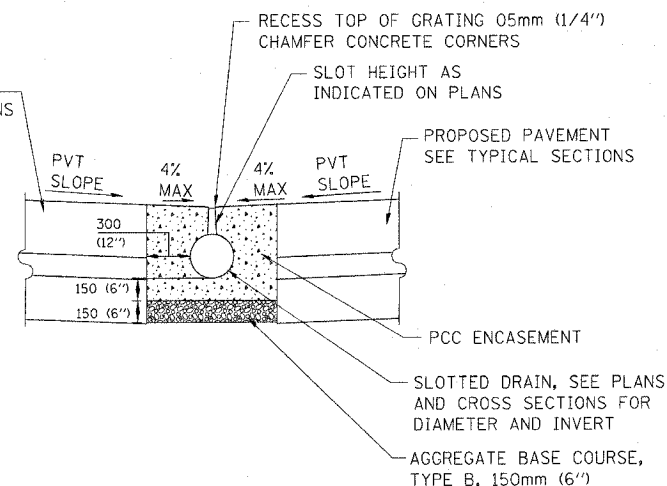
INVERTED REDUCER PLATE

COST INCLUDED IN THE UNIT PRICE OF SLOTTED DRAIN



SECTION B-B

PROPOSED PAVEMENT SEE TYPICAL SECTIONS



SLOTTED DRAIN TYPICAL SECTION A-A

SEE PLANS FOR ADJACENT GORE AREA AND PAVEMENT SLOPES

NOTES:

- ALL SLOTTED DRAINS ARE 300mm (12 IN) DIAMETER. SLOT WIDTH SHALL BE 44mm (1-3/4 IN.). SPACER BARS SHALL BE 4.7mm (3/16 IN.) SOLID WEB SPACERS ON 150mm (6 IN. CENTERS) FOR THE FULL DEPTH OF THE GRATING.
- THE HEIGHT OF THE SLOT CAN BE VARIED FROM 60mm TO 300mm MAX. IN ORDER TO INCREASE SLOPE AND VELOCITY OF PIPE PROVIDING SELF CLEANING ABILITY.
- WHEN CONSTANT HEIGHT OF SLOT IS SPECIFIED, IT WILL BE 150mm. WHEN VARIABLE HEIGHT SLOT IS USED, UPSTREAM INVERT TO BE 60mm OR APPROPRIATE DEPTH TO MAINTAIN 60mm MIN. HEIGHT OF SLOT.
- THE UPSTREAM END OF EACH SLOTTED DRAIN INSTALLATION SHALL BE SEALED WITH A WELDED END PLATE IN ACCORDANCE WITH MANUFACTURER'S SPECIFICATIONS.
- THE SLOTTED DRAIN SHALL BE INSTALLED IN A TRENCH EXCAVATED TO THE REQUIRED GRADE, AS SHOWN IN SECTIONS, WIDE ENOUGH TO ACCOMMODATE PIPE DRAIN. IF TRENCH IS EXCAVATED TOO DEEP, ADDITIONAL DEPTH SHALL BE FILLED WITH APPROVED FINE AGGREGATE AND COMPACTED TO THE SATISFACTION OF THE ENGINEER.
- CONNECTION TO EXISTING AND PROPOSED DRAINAGE STRUCTURES IS INCLUDED IN THE UNIT PRICE OF THE SLOTTED DRAIN. ALL MATERIALS REQUIRED FOR CONNECTION INCLUDED IN UNIT PRICE OF SLOTTED DRAIN.
- PRIOR TO BACKFILLING THE SLOTTED DRAIN SHALL BE COVERED TO PREVENT THE INTRUSION OF FOREIGN MATERIAL DURING BACKFILLING AND PAVING OPERATIONS.

SLOTTED DRAIN RAMP G AND I-94WB GORE

SLOTTED DRAIN STATION	SLOTTED DRAIN OFFSET	TOP OF GRATING	SLOTTED DRAIN INVERT
120+206.260	7.45 RT	187.882	187.282
120+200.630	7.34 RT	187.773	187.169
120+190.430	7.14 RT	187.578	186.965
120+180.240	6.94 RT	187.383	186.762
120+170.060	6.74 RT	187.188	186.558
120+159.890	6.54 RT	186.994	186.355
120+149.720	6.34 RT	186.799	186.151
120+140.320	6.16 RT	186.604	185.963
120+140.320	6.16 RT	186.604	185.882
120+138.780	6.13 RT	186.513	185.913

STR 100

DD-1

REVISIONS		ILLINOIS DEPARTMENT OF TRANSPORTATION F.A.I. ROUTE 80/94 (KINGERY EXPRESSWAY)
NAME	DATE	
		DRAINAGE DETAILS I
		SCALE: DATE 06/04
		DRAWN BY ACE/CAD CHECKED BY