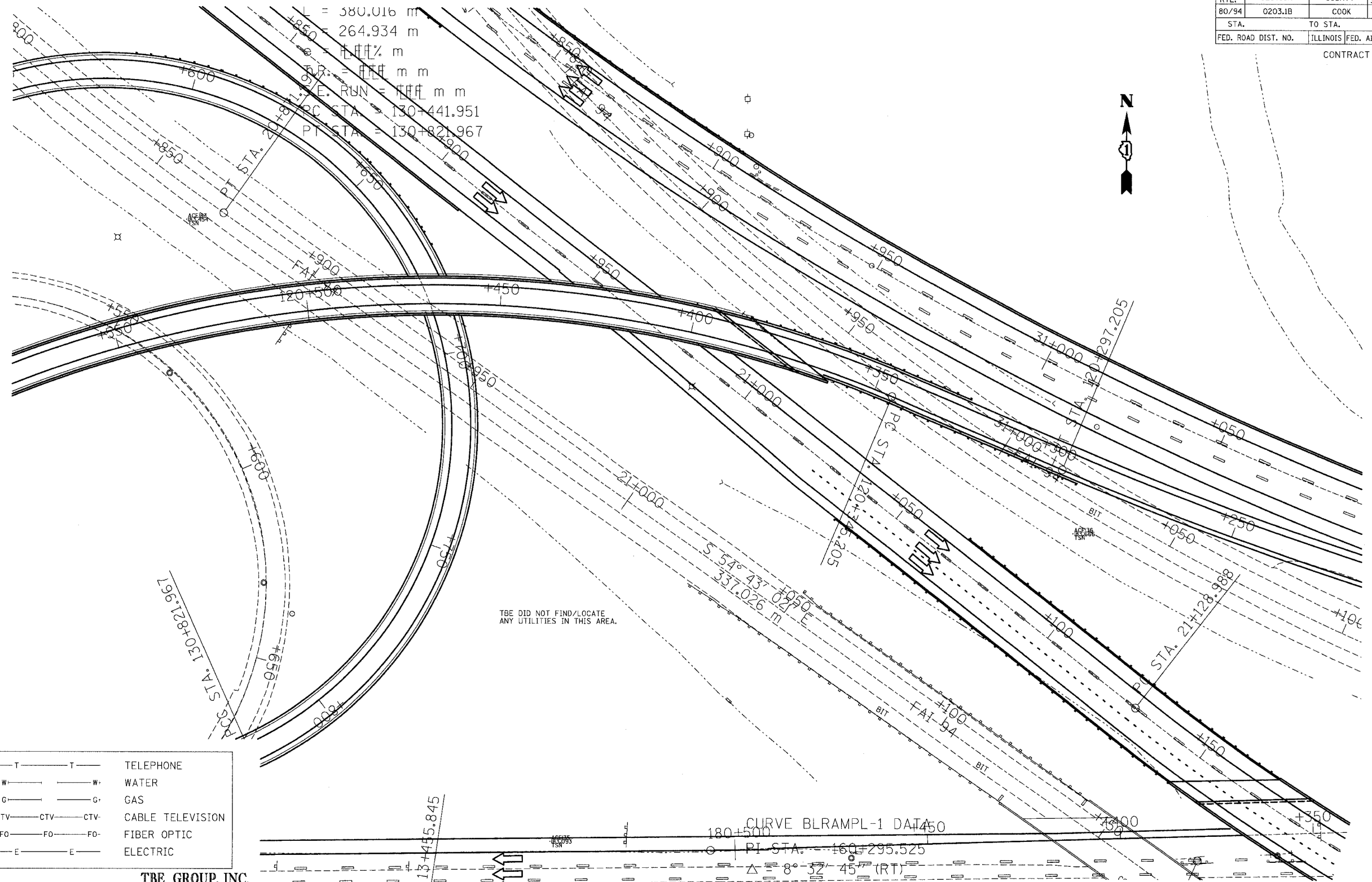


F.A.I. RTE.	SECTION	COUNTY	TOTAL SHEETS	SHEET NO.
80/94	0203.1B	COOK	200	54
STA.		TO STA.		
FED. ROAD DIST. NO.		ILLINOIS FED. AID PROJECT		

CONTRACT NO. 62854



— T — T —	TELEPHONE
— W — W —	WATER
— G — G —	GAS
— CTV — CTV — CTV —	CABLE TELEVISION
— FO — FO — FO —	FIBER OPTIC
— E — E —	ELECTRIC

**TBE GROUP, INC.**  
 CIVIL ENGINEERING • TRANSPORTATION • ENVIRONMENTAL  
 PLANNING • UTILITY ENGINEERING/LOCATING  
 SOUTHERN REGION: FL, GA, SC, NC  
 NORTHERN REGION: IL, IN, MI, OH, MD, NJ, NY  
 PA, VA, CANADA  
 WESTERN REGION: AZ, NV, NM, TX, CA, OR, UT, WA

IL09500122  
 TBE SUE PAGE NO: 49 of 52  
 Signature \_\_\_\_\_  
 SUE Quality Level "A" : Test Holes  
 SUE Quality Level "B" : Designating



205 W. WACKER DRIVE  
 SUITE 1020  
 CHICAGO, IL 60606  
 (312) 704-1970

Utilities shown on these plans as depicted in the legend have been investigated by TBE Group, Inc in accordance with SUE Industry Standards as of 2/8/02.  
 All other information shown has been provided to TBE Group, Inc by others.

REVISIONS	
NAME	DATE

ILLINOIS DEPARTMENT OF TRANSPORTATION  
 E. of IL RT. 83/US RT. 6 to E. Burnham Ave.  
 I-80/I-94 Burnham Ave. to State Line  
 I-80/I-94 (Tollway) E. of I-94 to W. of RT. 83/US 6.  
 I-94/IL RT. 394 S. of US 6 to 186th Street (N. bound & S. bound)  
 Contract No. 62110, 62111, 62114, 62105, 62107, 62108  
 SCALE : 500 DRAWN BY : JAC  
 SOL "B" DATE : 2/8/02 CHECKED BY