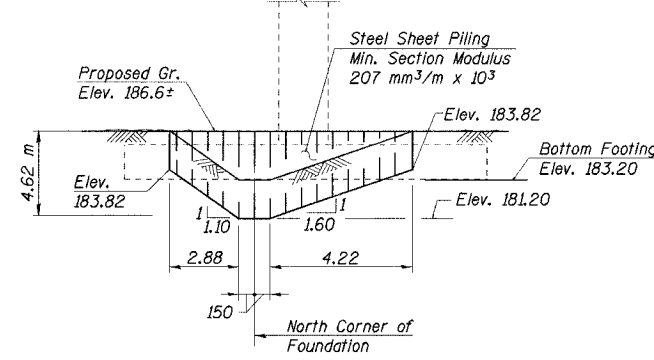
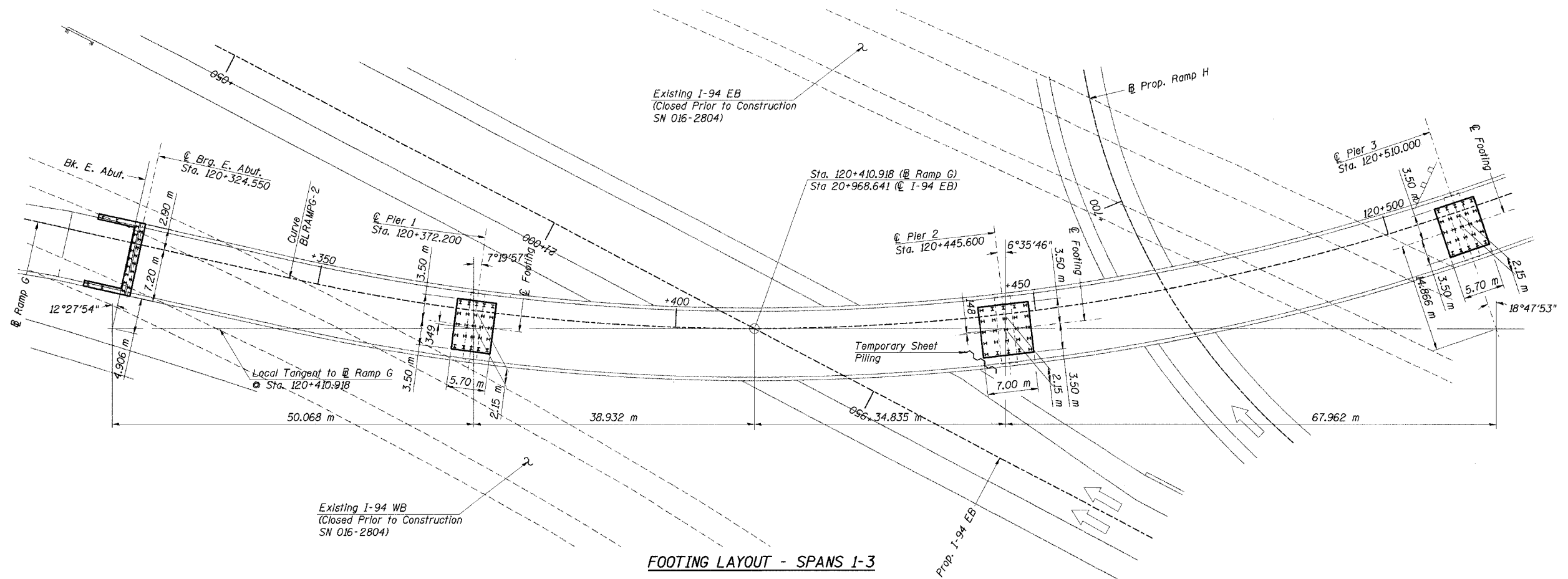


STATE OF ILLINOIS
DEPARTMENT OF TRANSPORTATION

ROUTE NO.	SECTION	COUNTY	TOTAL SHEETS	SHEET NO.	SHEET NO. 6 91 SHEETS
F. A. I. 80/94	0203.1B	COOK	200	68	
FED. ROAD DIST. NO. 1	ILLINOIS	FED. AID PROJECT-			
CONTRACT NO. 62854					



TEMPORARY SHEET PILING AT PIER 2
(Looking South)
Quantity = 24.89 Sq m
Minimum Embedment Depth = 2.0 m

PIER SHEET PILING NOTES:

- If the contractor chooses to alter the temporary cantilevered sheet piling design requirements shown on the plans for lesser design requirements, then full design submittals with the required seals will be expected by the Department, for review and approval.
- Steel Sheet Piling Yield Stress $f_y = 265 \text{ MPa}$

Notes:

- All excavation for Pier foundations shall be backfilled with CA-6 compacted to the satisfaction of the engineer, cost included with Structure Excavation.

DESIGNED	JJK
CHECKED	GPM
DRAWN	LK
CHECKED	MEA

J:\Beauchamp
ET-34562\CAD\DATA\CTR_28-2804\cda\1156014e-2804.dgn
28-MAR-2005 12:37

ILLINOIS DEPARTMENT OF TRANSPORTATION
I-94/IL 394 SOUTH BOUND
FOOTING LAYOUT - SPANS 1-3
WB I-80/94 TO SB IL 394 - RAMP G
FAI 80/94 - FAP 332 SECTION 0203.1B
COOK COUNTY
STA. 120+796.063 STRUCTURE NO. 016-2804
DATE 3/23/05
SCALE ---

HNTB