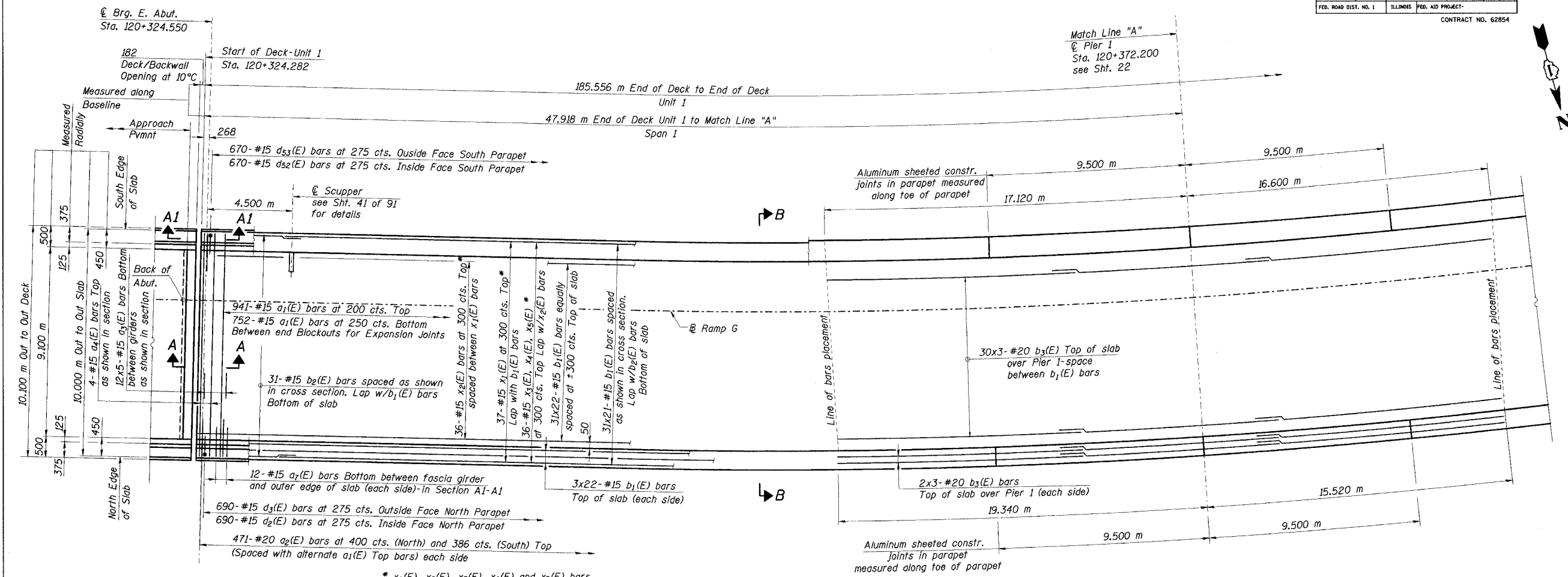
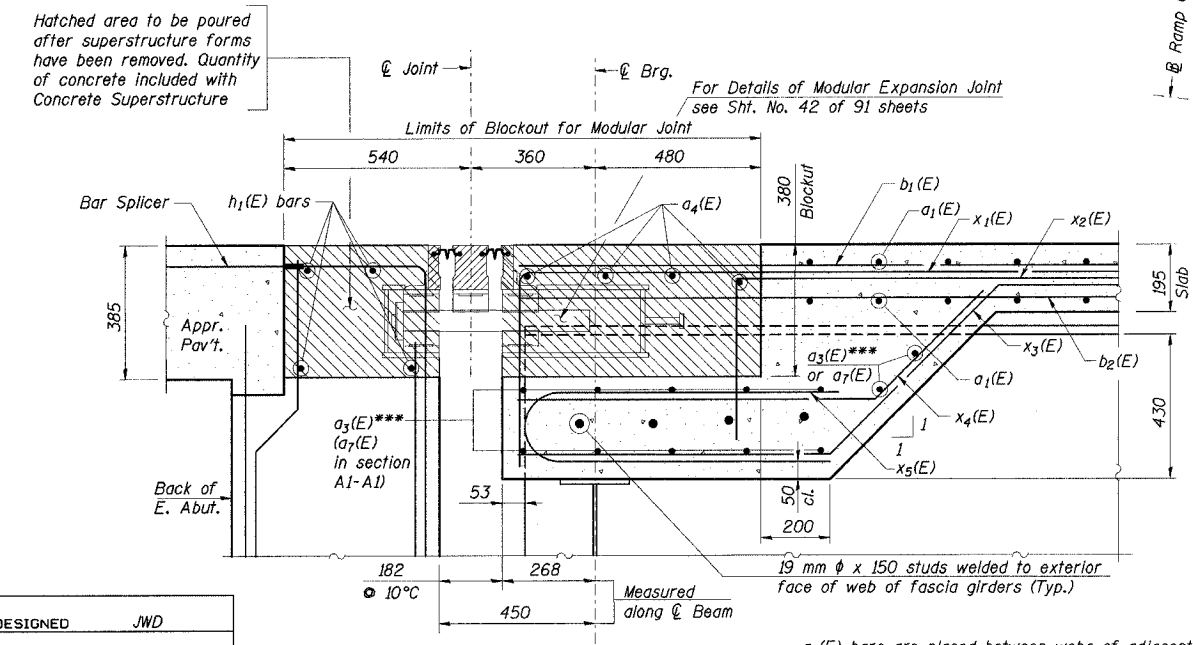


STATE OF ILLINOIS
DEPARTMENT OF TRANSPORTATION

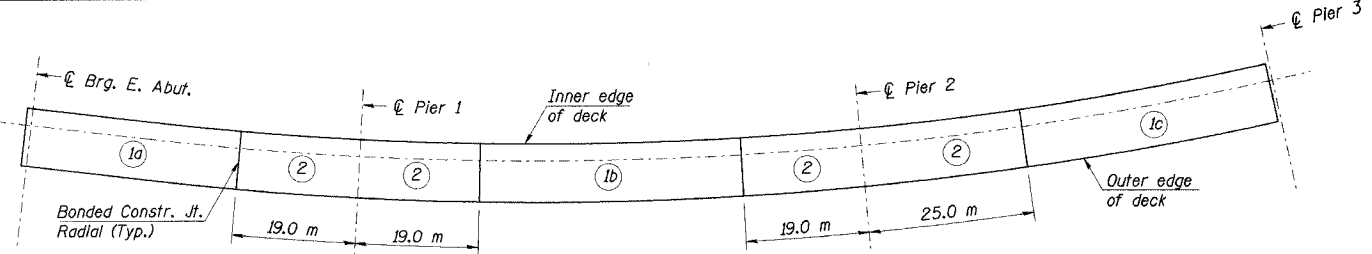
ROUTE NO.	SECTION	COUNTY	TOTAL SHEETS	SHEET NO.	SHEET NO. 21 91 SHEETS
F. A. I. 80/94	0203.1B	COOK	200	83	
FED. ROAD DIST. NO. 1	ILLINOIS	FED. AID PROJECT-			
CONTRACT NO. 62854					



DECK PLAN - SPAN 1



SECTION A-A (as shown)
SECTION A1-A1 similar
(Not all reinforcement shown in Abutment)



DECK POURING SEQUENCE

- Notes:
- Span dimensions given along baseline.
 - For deck cross section B-B, see Sht. No. 24.
 - For parapet reinforcement, see Sheets No's 24-26.
 - For localized scupper reinforcement and Bill of Material, see Sht. No. 39.
 - Typical lap splice lengths for reinforcement are based on a class C lap with 0.8 reduction for min. spacing:
#15 bars - 510
#20 bars - 640
 - Transverse reinforcement spacing is at outer edge. The transverse bars shall be placed radially and spacing along inner edge due to deck curvature is approximately:
Outer spa. Inner spa.
200 ~ 193
250 ~ 242
 - All bars designated (E) are epoxy coated.
 - For E. Abutment Reinforcement in blackout, see Sheets No's 70 & 71.
 - For E. Abutment Modular Joint Details, see Sht. No. 42.
 - Bars indicated thus "12x5-#15 etc." indicate 12 lines of bars with 5 lengths per line.
 - Place d (E) series parapet bars to avoid Aluminum Sheeted Joint location in parapet.
 - All dimensions are in millimeters (mm) except as noted.

DESIGNED	JWD
CHECKED	DD
DRAWN	LK
CHECKED	DD

ILLINOIS DEPARTMENT OF TRANSPORTATION
I-94/IL 394 SOUTH BOUND
DECK PLAN
SPAN 1
WB I-80/94 TO SB IL 394 - RAMP G
FAI 80/94 - FAP 332 SECTION 0203.1B
COOK COUNTY
STA. 120+796.063 STRUCTURE NO. 016-2804
DATE 3/23/05
SCALE ---

HNTB

J:\Beauchamp
E:\314562\CADD\B1\CTR_28_2804\cadd\au150014e_2804.dgn
28-MAR-2005 12:35