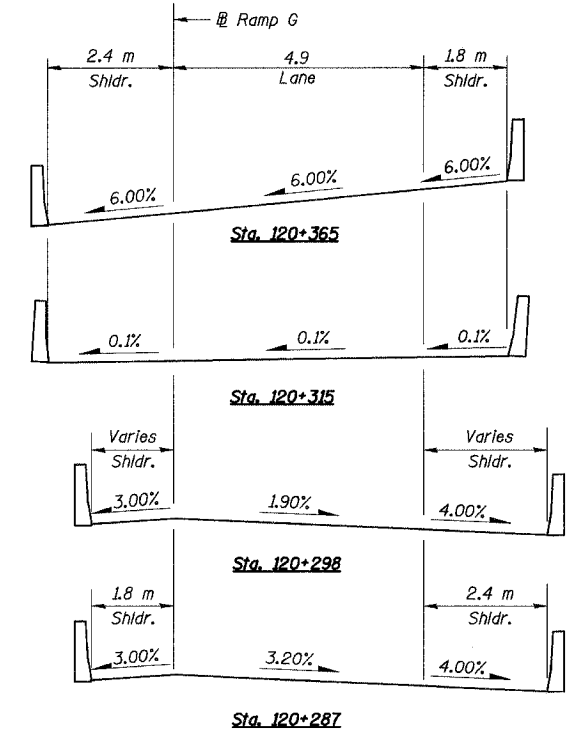
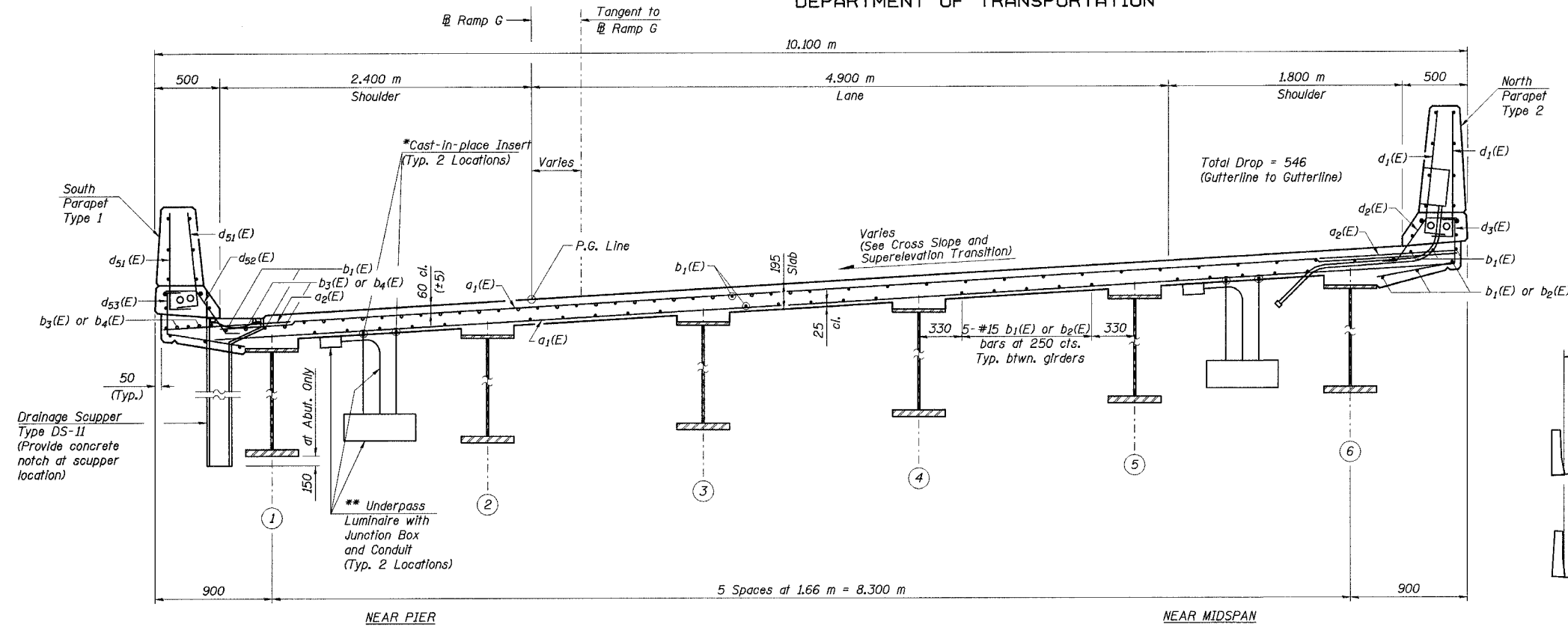


STATE OF ILLINOIS  
DEPARTMENT OF TRANSPORTATION

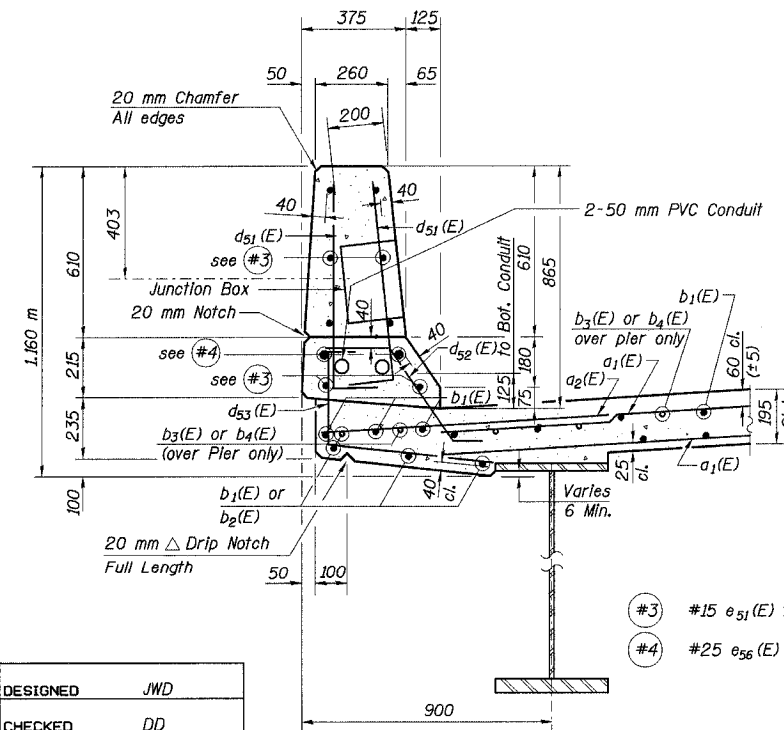
ROUTE NO.	SECTION	COUNTY	TOTAL SHEETS	SHEET NO.	SHEET NO. 24 91 SHEETS
F. A. I. 80/94	0203.1B	COOK	200	86	
FED. ROAD DIST. NO. 1		ILLINOIS FED. AID PROJECT-		CONTRACT NO. 62854	



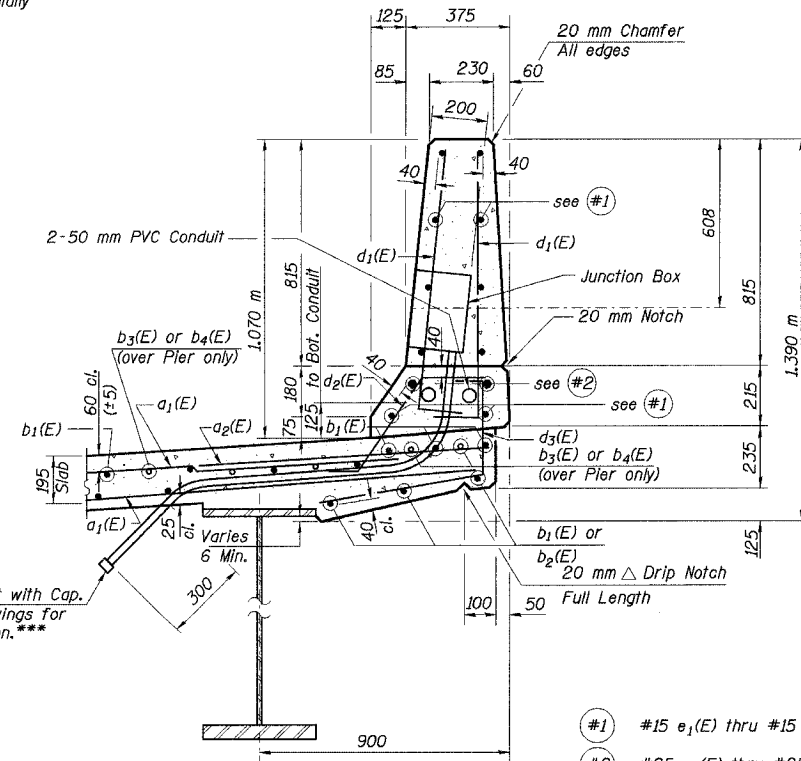
**CROSS SECTION B-B**

Looking Up Station  
All dimensions are measured radially

\*See Electrical Drawings for location and type, Paid under Electrical Contract but installed by Bridge Contractor. Installation included for payment under Concrete Superstructure. Bridge Contractor to coordinate with Electrical Contractor.  
\*\*Elements paid and installed under Electrical Contract.



SECTION THRU SOUTH PARAPET TYPE 1



SECTION THRU NORTH PARAPET TYPE 2

**CROSS SLOPE & SUPERELEVATION TRANSITION**

- Notes:
1. Work this Sheet with sheet Nos. 21-23 and 25-26.
  2. See Sht. No. 41 of 91 for drainage scupper.
  3. All dimension are in millimeters (mm) except as noted.

Jk-11112  
 J:\34562\CADD\B1\CTR\_2B\_2804\cadd\150104\_2804.dgn  
 07-APR-2005 14:10

DESIGNED	JWD
CHECKED	DD
DRAWN	JM/LK
CHECKED	DD

ILLINOIS DEPARTMENT OF TRANSPORTATION  
I-94/IL 394 SOUTH BOUND  
**DECK CROSS SECTION AND DETAILS**  
SPANS 1-3  
WB I-80/94 TO SB IL 394 - RAMP G  
FAI 80/94 - FAP 332 SECTION 0203.1B  
COOK COUNTY  
STA. 120+796.063 STRUCTURE NO. 016-2804  
DATE 3/23/05  
SCALE ---

**HNTB**

\*\*\*Provide 25 mm min. clear between conduits and  $d_1(E)$  bar conduit.