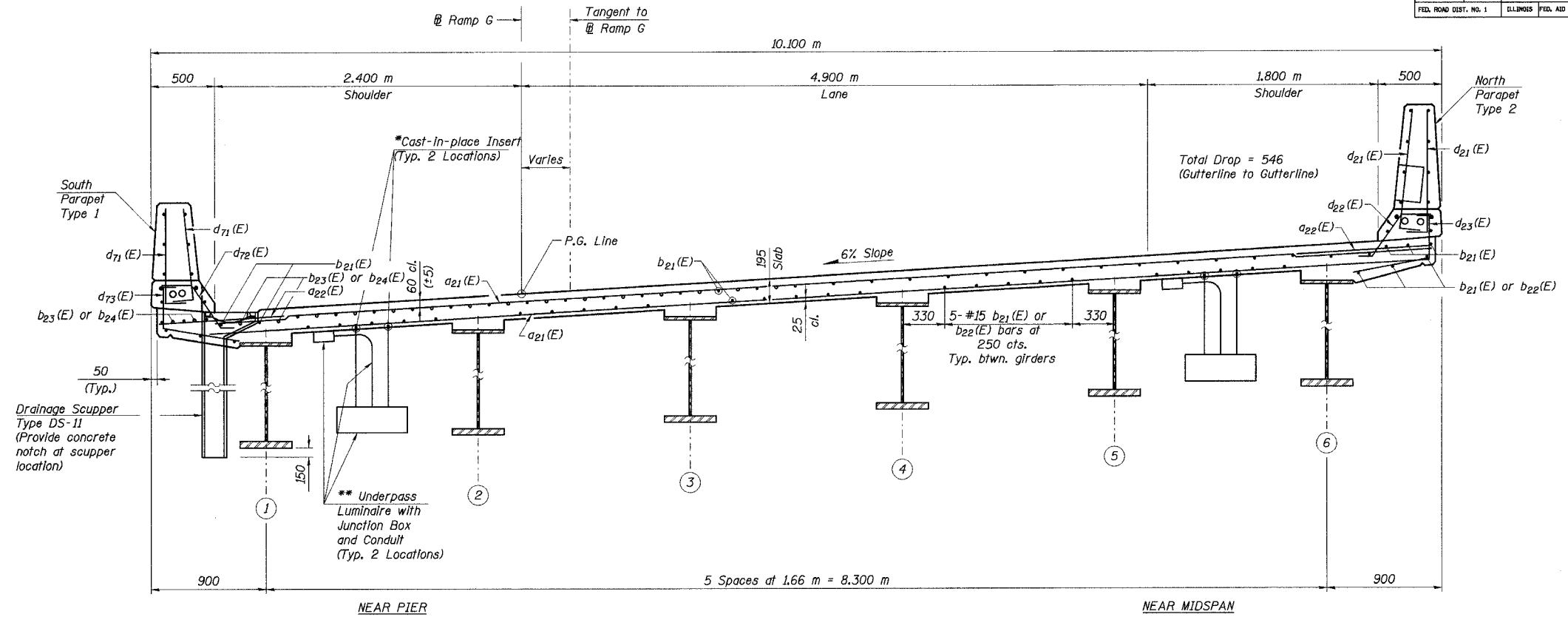


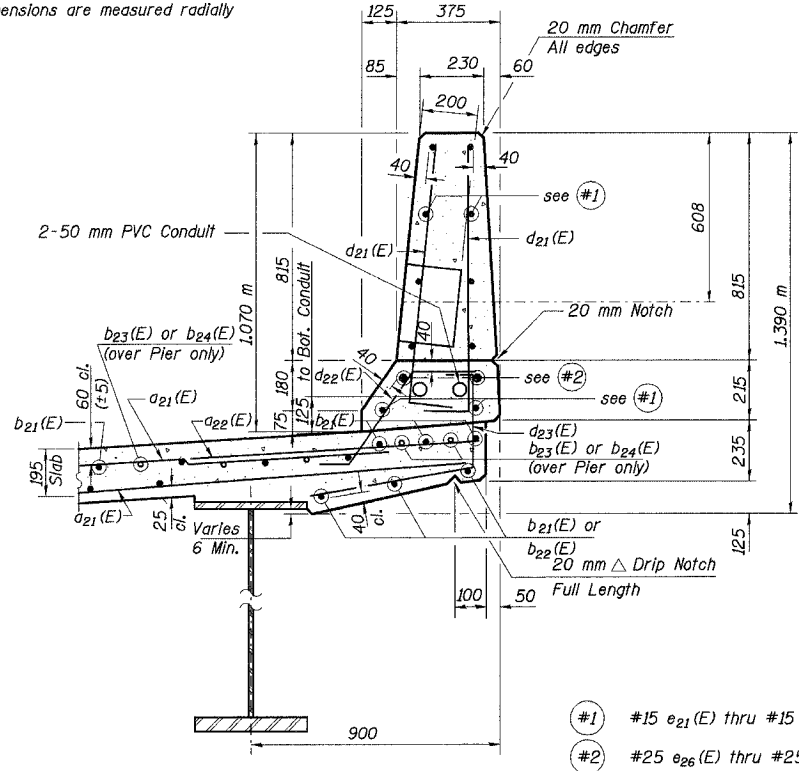
STATE OF ILLINOIS
DEPARTMENT OF TRANSPORTATION

ROUTE NO.	SECTION	COUNTY	TOTAL SHEETS	SHEET NO.	SHEET NO.
F. A. I. 80/94	0203.1B	COOK	200	98	91 SHEETS
FED. ROAD DIST. NO. 1		ILLINOIS FED. AID PROJECT-		CONTRACT NO. 62854	

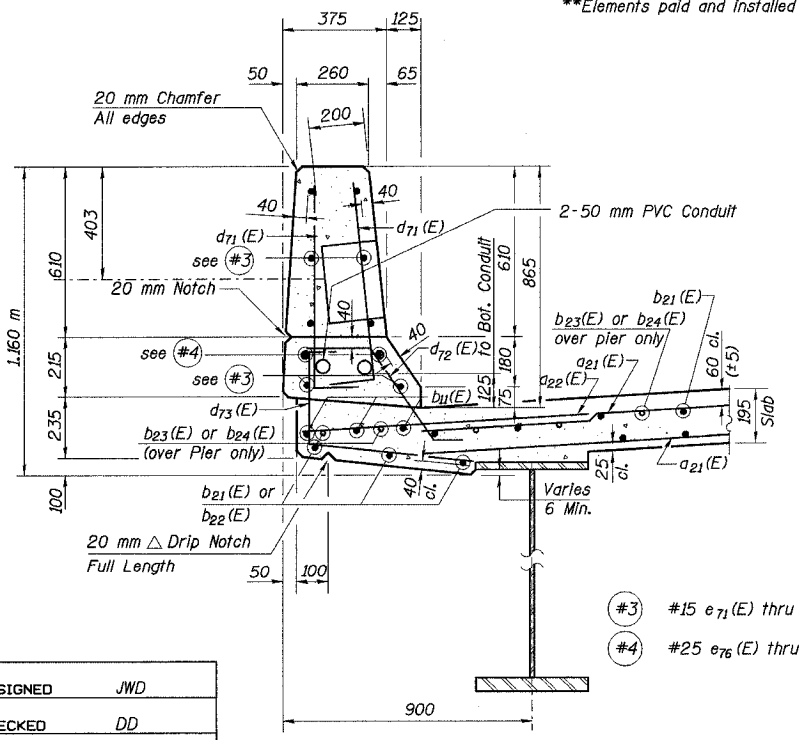


*See Electrical Drawings for location and type, Paid under Electrical Contract but installed by Bridge Contractor. Installation Included for payment under Concrete Superstructure, Bridge Contractor to coordinate with Electrical Contractor.
**Elements paid and installed under Electrical Contract.

CROSS SECTION F-F
Looking Up Station
All dimensions are measured radially



- Notes:
1. Work this Sheet with sheet Nos. 33-35 and 37-38.
 2. See Sht. No. 41 of 91 for drainage scupper.
 3. All dimensions are in millimeters (mm) except as noted.



SECTION THRU SOUTH PARAPET TYPE 1

SECTION THRU NORTH PARAPET TYPE 2

DESIGNED	JWD
CHECKED	DD
DRAWN	JM/LK
CHECKED	DD

ILLINOIS DEPARTMENT OF TRANSPORTATION
I-94/IL 394 SOUTH BOUND
DECK CROSS SECTION AND DETAILS
SPANS 7-9
WB I-80/94 TO SB IL 394 - RAMP G
FAI 80/94 - FAP 332 SECTION 0203.1B
COOK COUNTY
STA. 120+796.063 STRUCTURE NO. 016-2804
DATE 3/23/05
SCALE ---

HNTB

J:\34562\CADD\B1\CTR_28_2804\Cds\150124e_2804.dgn
 07-APR-2005 1:41:4