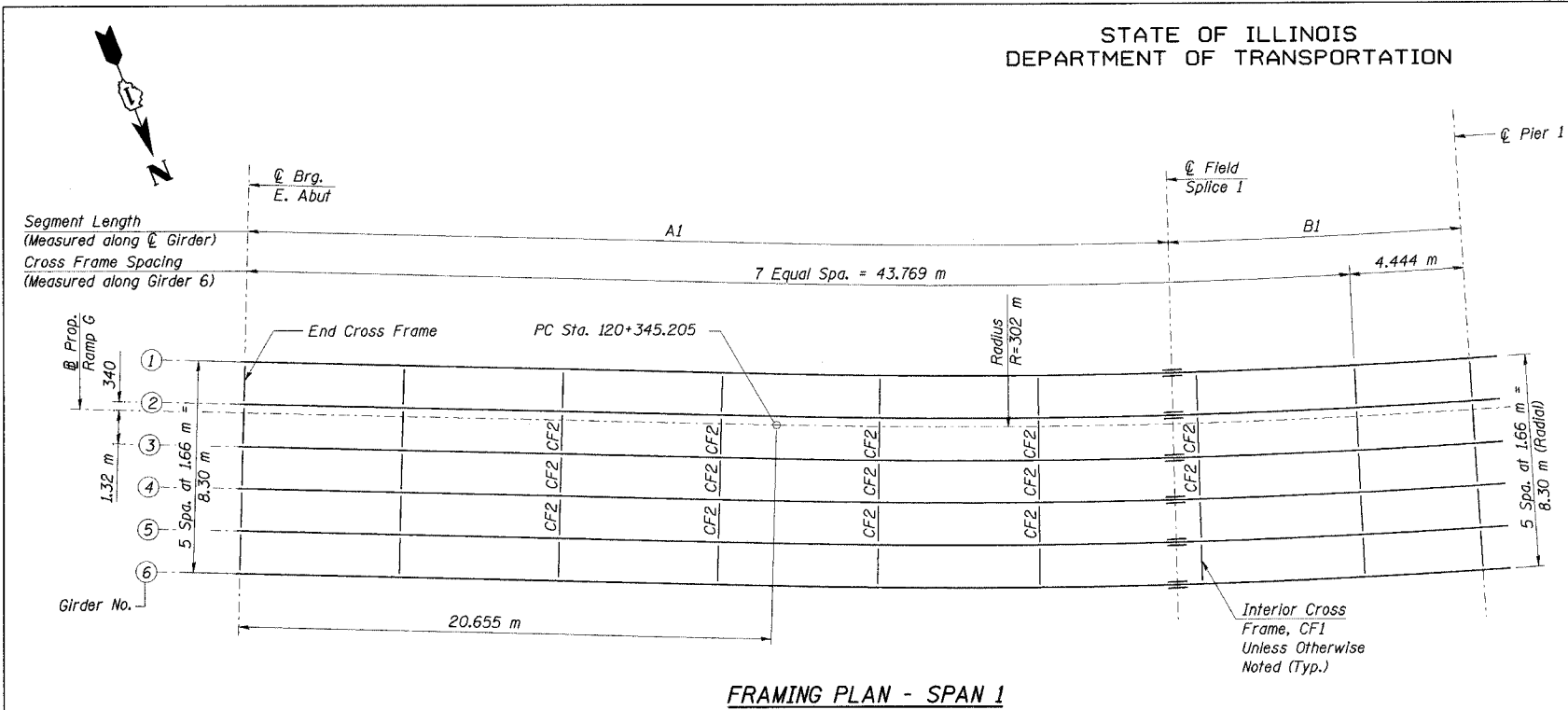
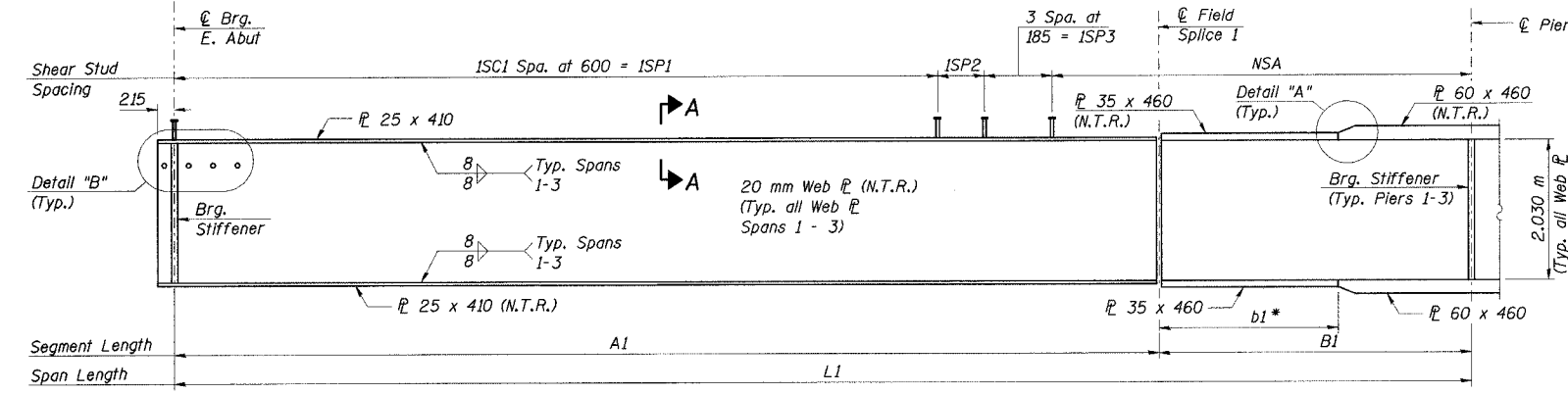


STATE OF ILLINOIS
DEPARTMENT OF TRANSPORTATION

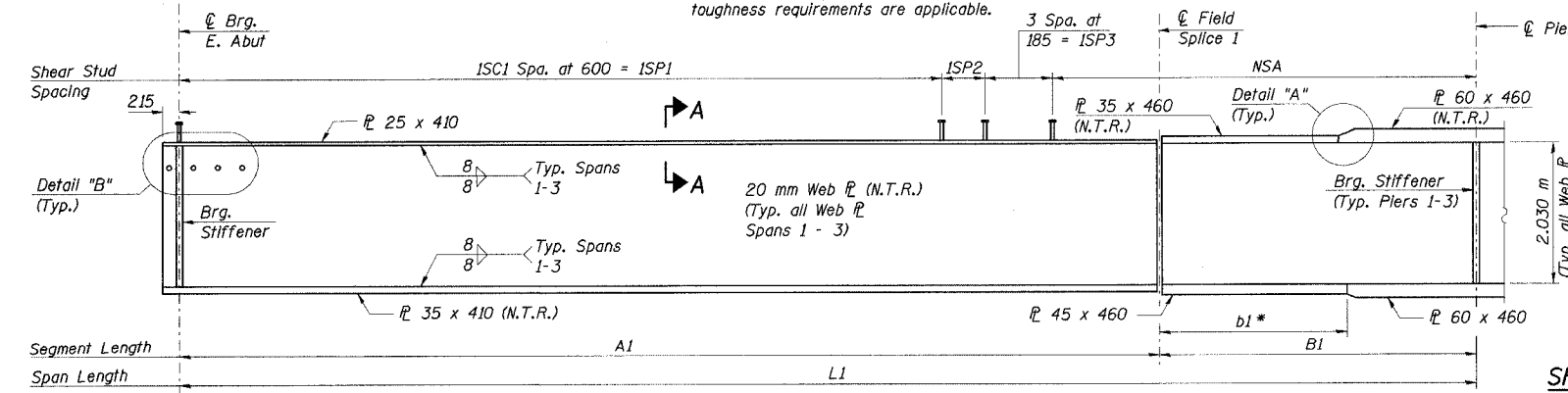
ROUTE NO.	SECTION	COUNTY	TOTAL SHEETS	SHEET NO.
F. A. I. 80/94	0203.1B	COOK	200	107
SHEET NO. 45 91 SHEETS				
CONTRACT NO. 62854				



FRAMING PLAN - SPAN 1

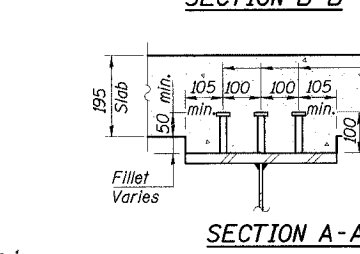
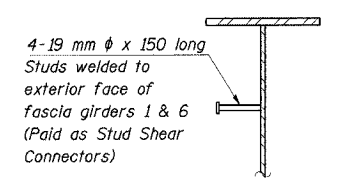
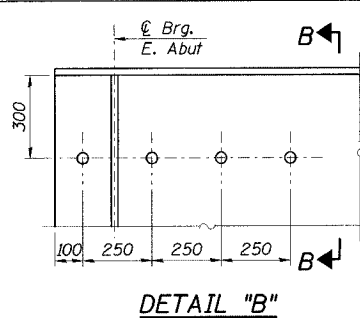


ELEVATION - GIRDERS 1 THRU 3



ELEVATION - GIRDERS 4 THRU 6

DESIGNED	ACF
CHECKED	GPM
DRAWN	JRB
CHECKED	PCA/MEA

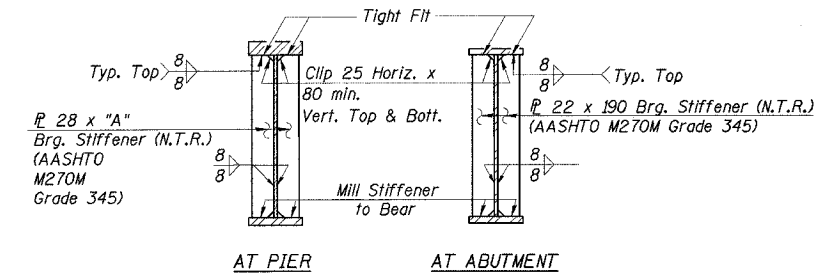
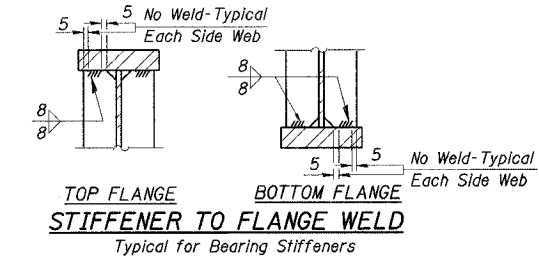
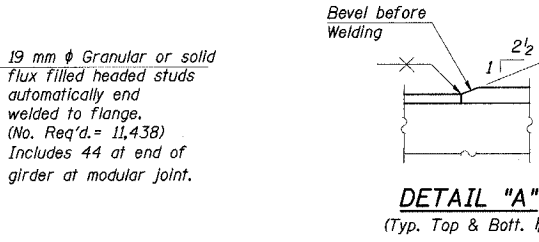


GIRDER DIMENSIONS (Meters)

Girder	Radius	L1	A1	B1	b1
1	300.00	47.471	35.630	11.841	7.371
2	301.66	47.620	35.713	11.907	7.412
3	303.32	47.768	35.796	11.972	7.452
4	304.98	47.917	35.879	12.038	7.493
5	306.64	48.065	35.962	12.103	7.534
6	308.30	48.213	36.044	12.169	7.575

BEARING STIFFENER WIDTH DIMENSION "A" AT PIERS (Millimeters)

Girder	Pier 1,4,7,8	Pier 5	Pier 2	Pier 3 East	Pier 6 East	Pier 3 & 6 West
1 thru 3	220	220	220	190	190	190
4 thru 6	220	270	270	220	270	190



SHEAR CONNECTOR DIMENSIONS (Meters)

Girder	ISC1	ISP1	ISP2	ISP3	NSA
1	51	30.600	0.556	0.555	15.760
2	51	30.600	0.265	0.555	16.200
3	50	30.000	0.571	0.555	16.642
4	50	30.000	0.275	0.555	17.087
5	49	29.400	0.576	0.555	17.534
6	49	29.400	0.275	0.555	17.983

- Notes:
- All flange plates and web plates shall be AASHTO M270M Grade 345.
 - Work this sheet with Sheet Nos. 46, 47 & 48 of 91.
 - Place all cross frames radially, except the End Cross Frame at Piers 3.
- * Top & Bottom

ILLINOIS DEPARTMENT OF TRANSPORTATION
I-94/IL 394 SOUTH BOUND
FRAMING PLAN, GIRDER ELEVATION AND DETAILS-SPAN 1
WB I-80/94 TO SB IL 394 - RAMP G
FAI 80/94 - FAP 332 SECTION 0203.1B
COOK COUNTY
STA. 120+796.063 STRUCTURE NO. 016-2804
DATE 3/23/05
SCALE ---

HNTB

JBeauchamp
 E:\34562\CADD\1\CTR_28_2804\cda\p150104e_2804.dgn
 28-MAR-2005 12:32