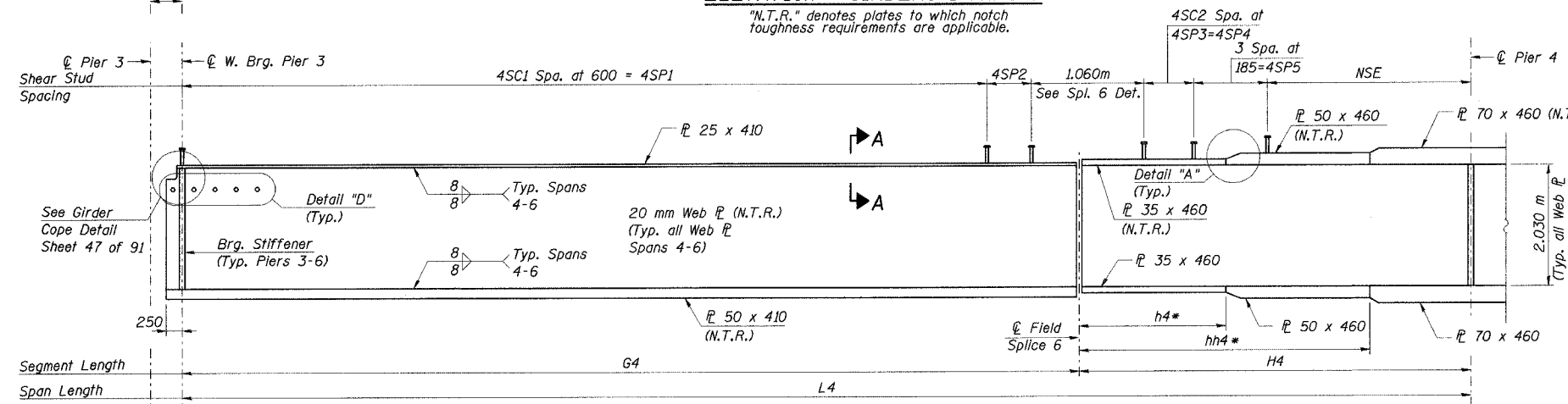
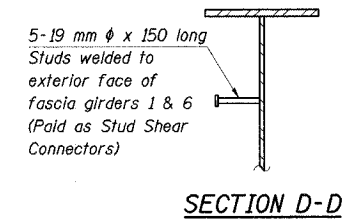
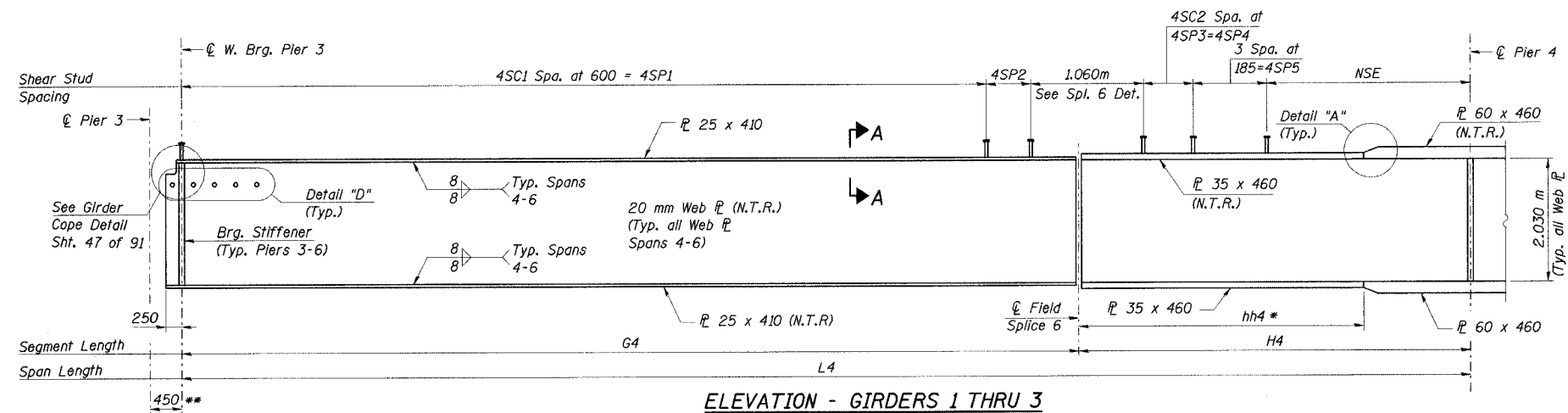
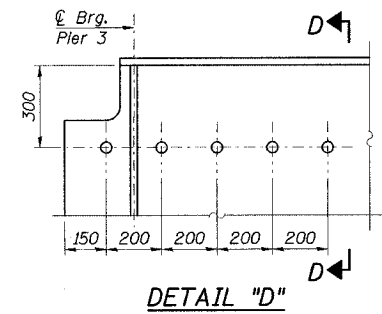
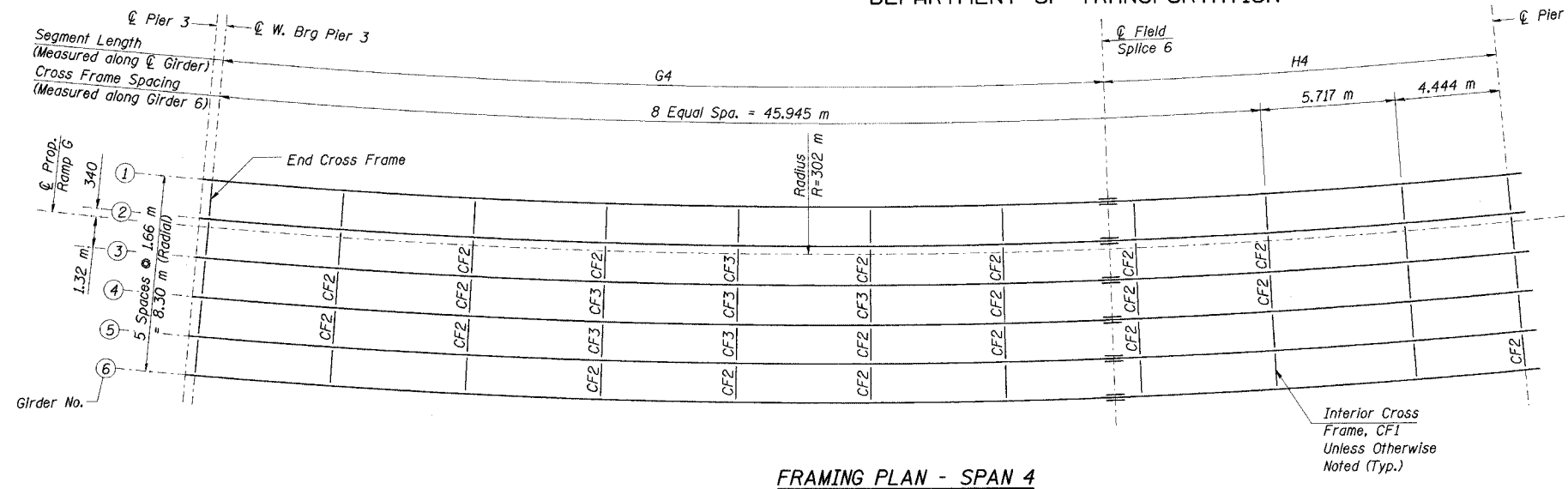


STATE OF ILLINOIS
DEPARTMENT OF TRANSPORTATION

ROUTE NO.	SECTION	COUNTY	TOTAL SHEETS	SHEET NO.	SHEET NO. 51 91 SHEETS
F. A. I. 80/94	0203.1B	COOK	200	113	
FED. ROAD DIST. NO. 1	ILLINOIS	FED. AID PROJECT-			
CONTRACT NO. 62854					



- Notes:
- All flange plates and web plates shall be AASHTO M270M Grade 345.
 - Work this sheet with Sht. Nos. 52, 53 & 54 of 91.
 - For Section A-A, Detail A, & Bearing Stiffeners Detail, see Sht. No. 45 of 91.
 - Place all cross frames radially, except End Cross Frame at Piers 3 & 6.
- * Top & Bottom.
** Dimension measured along @ Ramp G only.

GIRDER DIMENSIONS (Meters)

Girder	Radius	L4	G4	H4	h4	hh4
1	300.00	54.583	36.464	18.119	-	13.649
2	301.66	54.888	36.669	18.219	-	13.725
3	303.32	55.192	36.872	18.320	-	13.800
4	304.98	55.497	37.077	18.420	8.220	13.876
5	306.64	55.801	37.281	18.520	8.265	13.951
6	308.30	56.106	37.485	18.621	8.310	14.027

ELEVATION - GIRDERS 4 THRU 6

"N.T.R." denotes plates to which notch toughness requirements are applicable.

SHEAR CONNECTOR DIMENSIONS (Meters)

Girder	45C1	45P1	45P2	45C2	45P3	45P4	45P5	NSE
1	59	35.400	35.400	0.534	1	0.222	0.222	0.555
2	60	36.000	36.000	0.139	1	0.558	0.558	0.555
3	60	36.000	36.000	0.342	2	0.449	0.898	0.555
4	60	36.000	36.000	0.547	3	0.414	1.242	0.555
5	61	36.600	36.600	0.151	3	0.530	1.590	0.555
6	61	36.600	36.600	0.355	4	0.485	1.940	0.555

DESIGNED	ACF
CHECKED	GPM
DRAWN	JRB
CHECKED	PCA/MEA

J:\Beauchamp
 E:\34562\CADD\N1\CTR_28-2804\cda\Fp150134e-2804.dgn
 28-MAR-2005 12:31

ILLINOIS DEPARTMENT OF TRANSPORTATION
I-94/IL 394 SOUTH BOUND
FRAMING PLAN, GIRDER ELEVATION
AND DETAILS-SPAN 4
WB I-80/94 TO SB IL 394 - RAMP G
FAI 80/94 - FAP 332 SECTION 0203.1B
COOK COUNTY
STA. 120+796.063 STRUCTURE NO. 016-2804
DATE 3/23/05
SCALE ---

HNTB