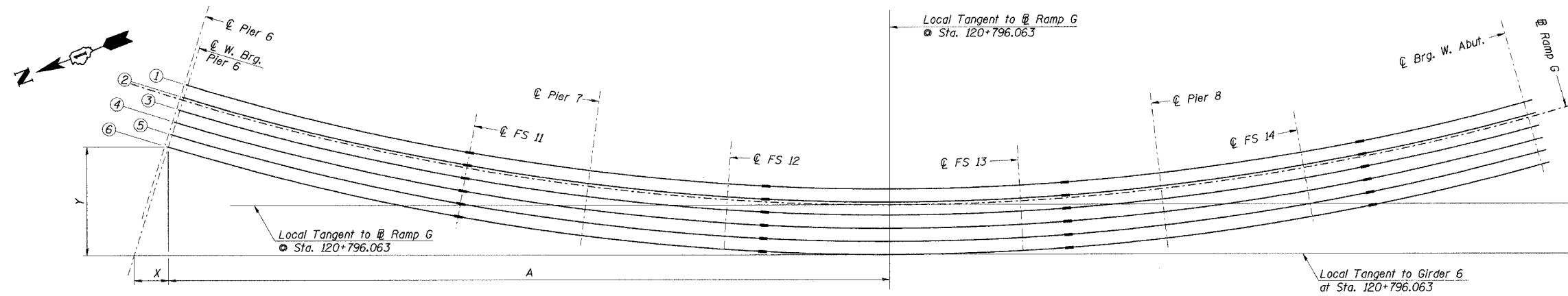


STATE OF ILLINOIS
DEPARTMENT OF TRANSPORTATION

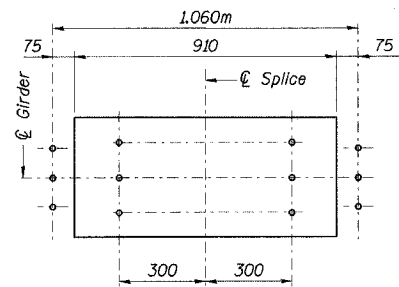
ROUTE NO.	SECTION	COUNTY	TOTAL SHEETS	SHEET NO.	SHEET NO. 60 91 SHEETS
F. A. I. 80/94	0203.1B	COOK	200	122	
FED. ROAD DIST. NO. 1	ILLINOIS	FED. AID PROJECT-			
CONTRACT NO. 62854					



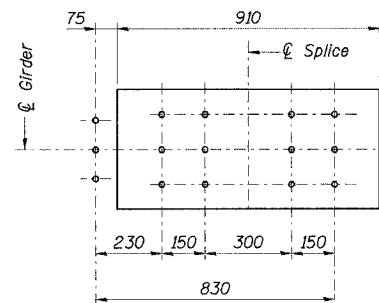
GIRDER LAYOUT PLAN - SPANS 7-9

LAYOUT DIMENSIONS

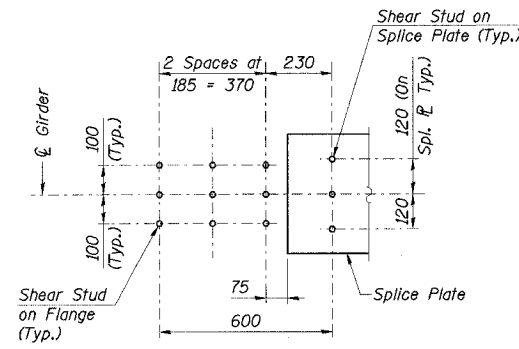
Girder	Station	W. Brg. Pier 6 120+705.350			FS 11 120+739.800			Pier 7 120+757.800			FS 12 120+775.500			FS 13 120+812.600			Pier 8 120+830.500			FS 14 120+848.700			Brg. W Abut 120+877.900		
		A	X	Y	A	X	Y	A	X	Y	A	X	Y	A	X	Y	A	X	Y	A	X	Y			
1	300.00	88.761	4.182	13.431	55.568	0.978	5.191	37.908	0.306	2.405	20.411	0.047	0.695	16.419	0.025	0.450	34.135	0.223	1.948	52.024	0.800	4.545	80.304	3.041	10.948
2	301.66	89.254	4.206	13.506	55.875	0.984	5.220	38.118	0.308	2.418	20.524	0.048	0.699	16.510	0.025	0.452	34.324	0.224	1.959	52.312	0.805	4.570	80.748	3.058	11.008
BL	302.00	89.355	4.210	13.522	55.938	0.985	5.226	38.161	0.308	2.421	20.547	0.048	0.700	16.529	0.025	0.453	34.362	0.225	1.961	52.371	0.806	4.576	80.839	3.062	11.021
3	303.32	89.747	4.229	13.581	56.183	0.989	5.249	38.328	0.310	2.431	20.637	0.048	0.703	16.601	0.025	0.455	34.513	0.226	1.970	52.600	0.809	4.596	81.192	3.075	11.069
4	304.98	90.241	4.253	13.657	56.490	0.995	5.277	38.537	0.311	2.445	20.750	0.048	0.707	16.692	0.025	0.457	34.701	0.227	1.981	52.888	0.814	4.621	81.637	3.092	11.129
5	306.64	90.735	4.276	13.732	56.798	1.000	5.306	38.747	0.313	2.458	20.863	0.048	0.711	16.783	0.025	0.460	34.890	0.228	1.991	53.176	0.818	4.646	82.081	3.109	11.190
6	308.30	91.228	4.300	13.807	57.105	1.006	5.335	38.957	0.315	2.471	20.976	0.049	0.714	16.874	0.025	0.462	35.079	0.229	2.002	53.463	0.822	4.671	82.525	3.126	11.250



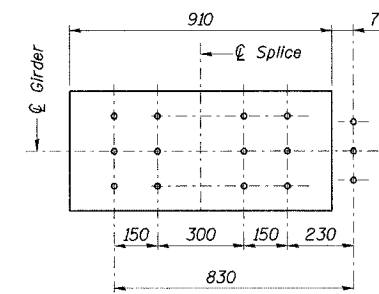
SPICES 11, 12, 13 & 14 DETAIL



SPICE 11A DETAIL



SPICE 11B DETAIL



SPICE 14A DETAIL

Notes:
Coordinate system shown for Girder 6.
Typical for all Girders with local tangent
to each girder at Sta. 120+796.063.

J:\Beauchamp
E:\34562\CADD\1\CTR_28_2804\cda\p1502034e_2804.dgn
28-MAR-2005 12:30

DESIGNED	GPM
CHECKED	PCA
DRAWN	JRB/LK
CHECKED	MEA

ILLINOIS DEPARTMENT OF TRANSPORTATION
I-94/IL 394 SOUTH BOUND
GIRDER LAYOUT - SPANS 7-9
WB I-80/94 TO SB IL 394 - RAMP G
FAI 80/94 - FAP 332 SECTION 0203.1B
COOK COUNTY
STA. 120+796.063 STRUCTURE NO. 016-2804
DATE 3/23/05
SCALE ---
HNTB