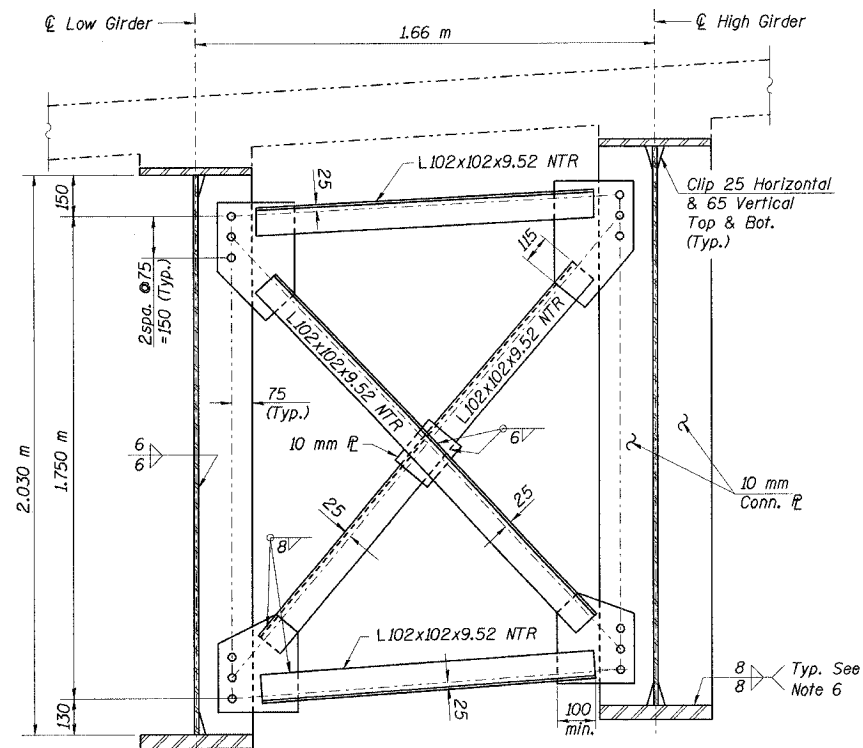


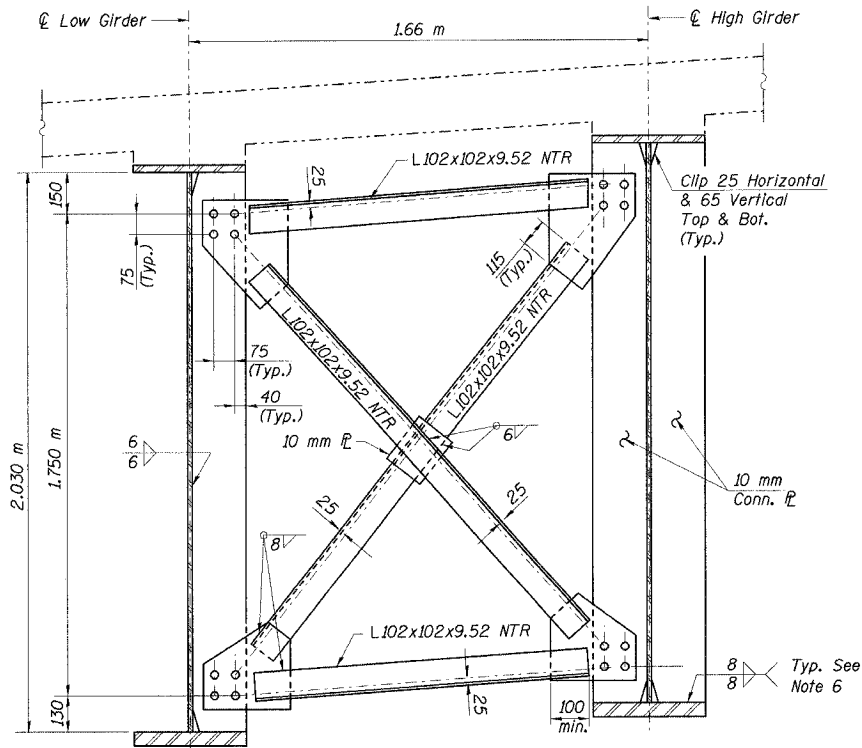
STATE OF ILLINOIS
DEPARTMENT OF TRANSPORTATION

ROUTE NO.	SECTION	COUNTY	TOTAL SHEETS	SHEET NO.	SHEET NO. 63 91 SHEETS
F. A. I. 80/94	0203.1B	COOK	200	125	
FED. ROAD DIST. NO. 1	ILLINOIS	FED. AID PROJECT-			

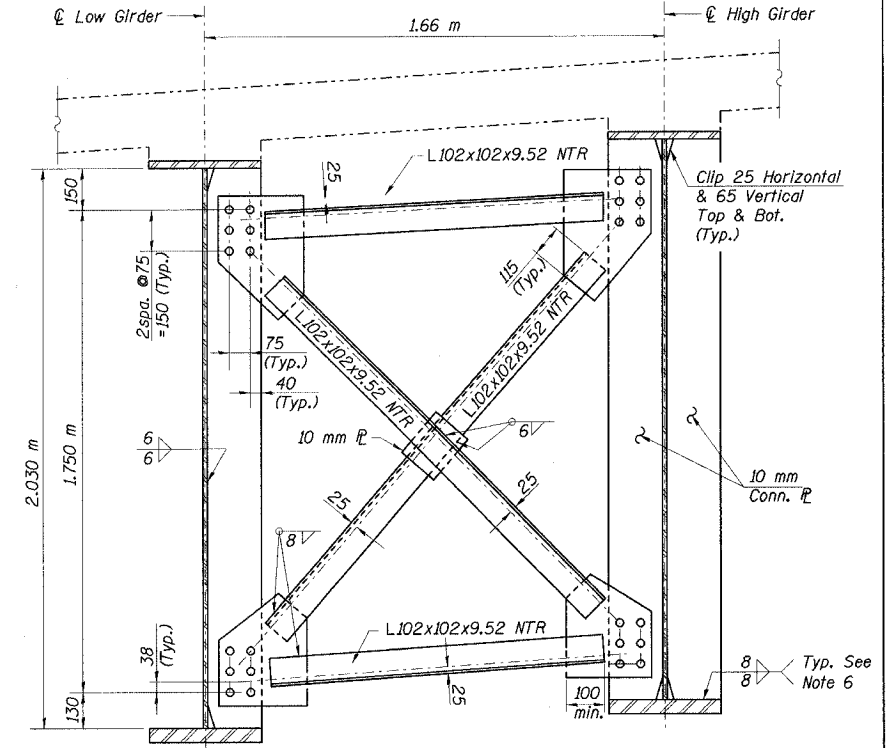
CONTRACT NO. 62854



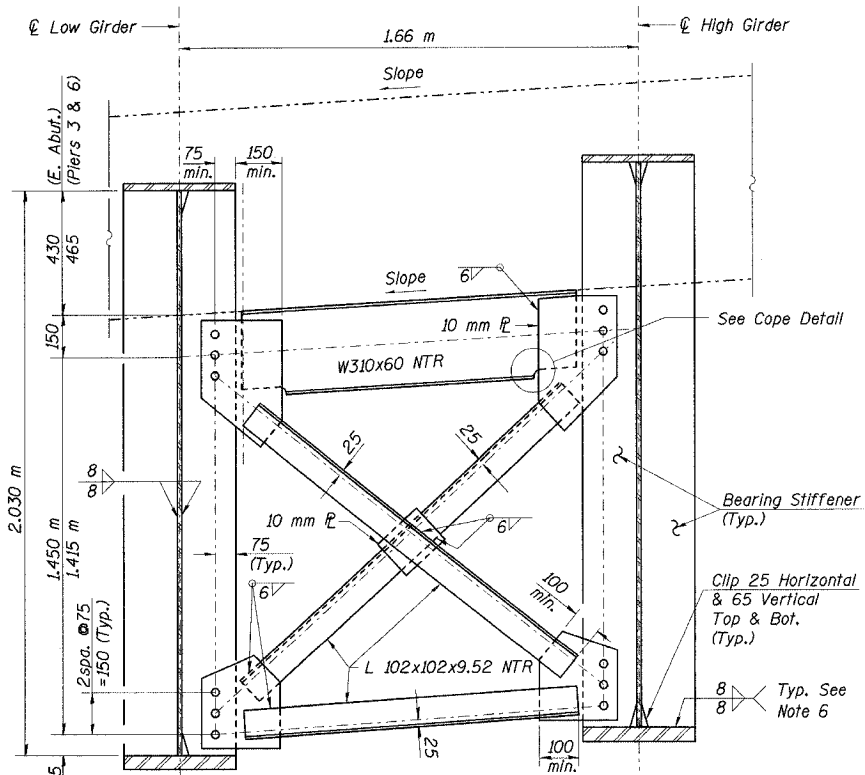
TYPICAL INTERIOR CROSS FRAME-CF1
(257 Required)



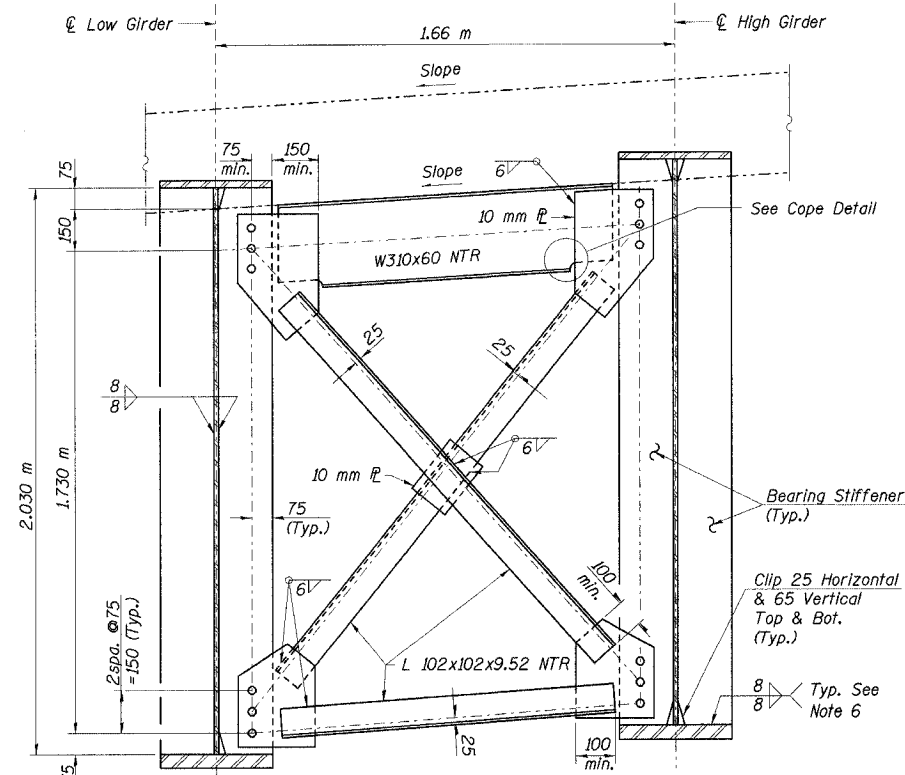
INTERIOR CROSS FRAME-CF2
(165 Required)



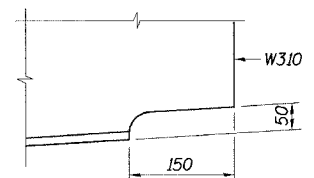
INTERIOR CROSS FRAME-CF3
(43 Required)



END CROSS FRAME AT E. ABUT., PIER 3 & PIER 6
(25 Required)



END CROSS FRAME AT W. ABUTMENT
(5 Required)



COPE DETAIL

Notes:

- All dimensions are in millimeters (mm) except as noted.
- All structural steel for cross frames shall be M 270M Grade 345.
- Fasteners shall be AASHTO M 164M, M22 H.S. bolts. Open holes 28 mm for cross frame members. All others 24 mm.
- All cross frames shall comply with NTR.
- NTR denotes Notch Toughness Requirements.
- Terminate welds 5 mm from end of plate.

DESIGNED	JJK
CHECKED	GPM
DRAWN	JJK
CHECKED	MEA

J:\Beauchamp
E:\34562\CADD\1\CTR_28_2804\cadd\50014e_2804.dgn
28-MAR-2005 12:29

ILLINOIS DEPARTMENT OF TRANSPORTATION
I-94/IL 394 SOUTH BOUND
CROSS FRAME DETAILS
WB I-80/94 TO SB IL 394 - RAMP G
FAI 80/94 - FAP 332 SECTION 0203.1B
COOK COUNTY
STA. 120+796.063 STRUCTURE NO. 016-2804
DATE 3/23/05
SCALE ---

HNTB