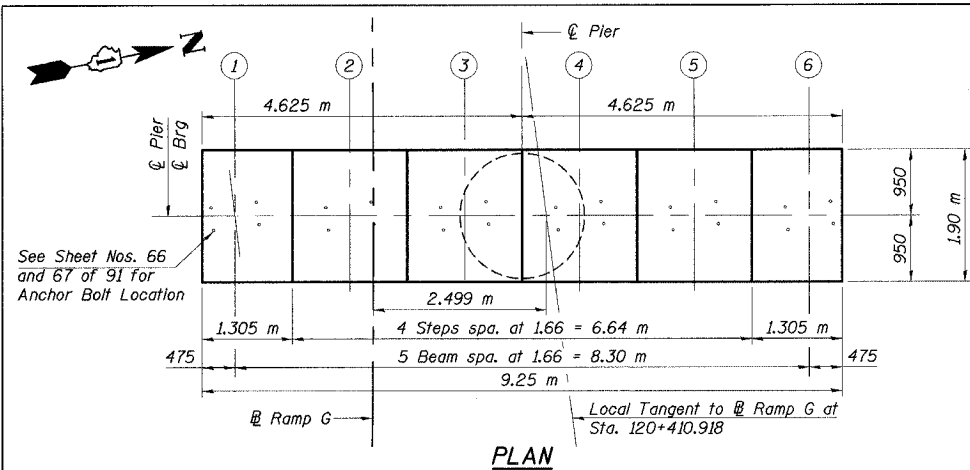
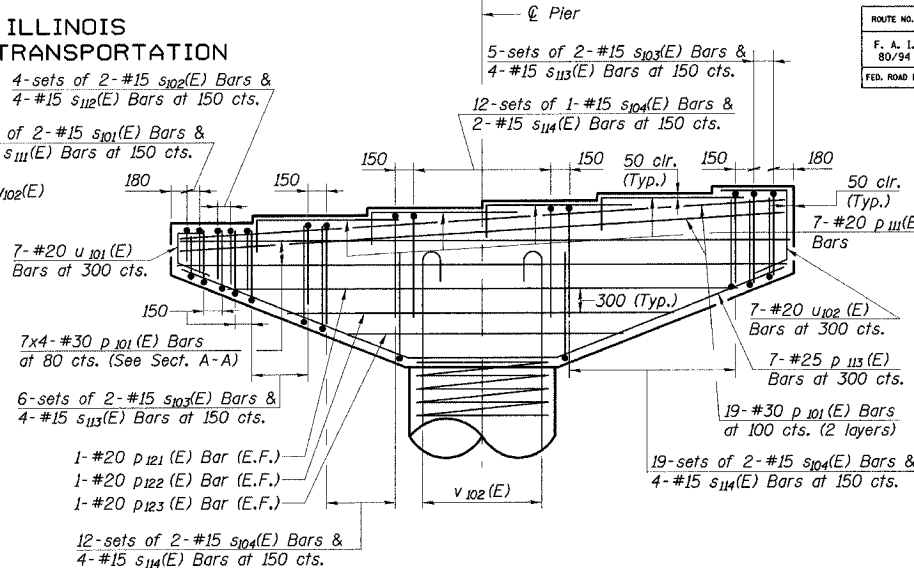
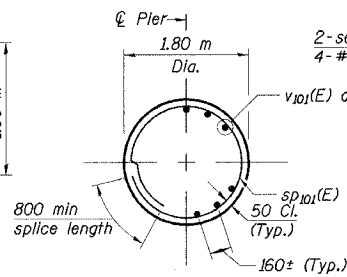


STATE OF ILLINOIS  
DEPARTMENT OF TRANSPORTATION

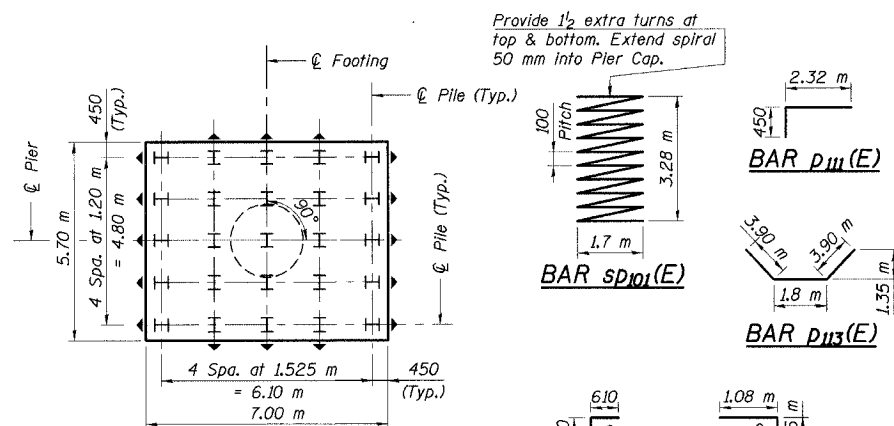
ROUTE NO.	SECTION	COUNTY	TOTAL SHEETS	SHEET NO.	SHEET NO. 74 91 SHEETS
F. A. I. 80/94	0203.1B	COOK	200	136	
FED. ROAD DIST. NO. 1		ILLINOIS	FED. AID PROJECT-		
CONTRACT NO. 62B54					



SECTION B-B



PIER CAP REINFORCEMENT

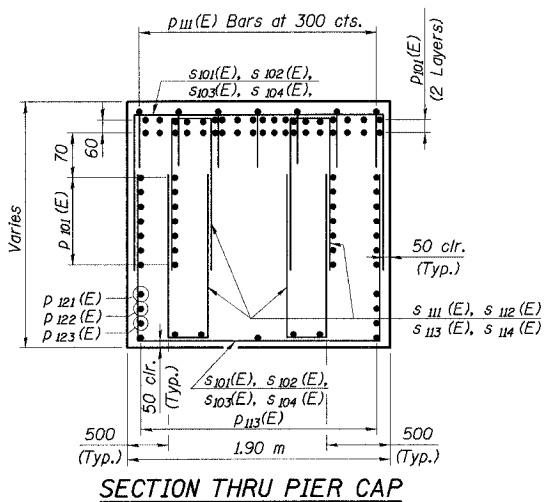


FOOTING PLAN

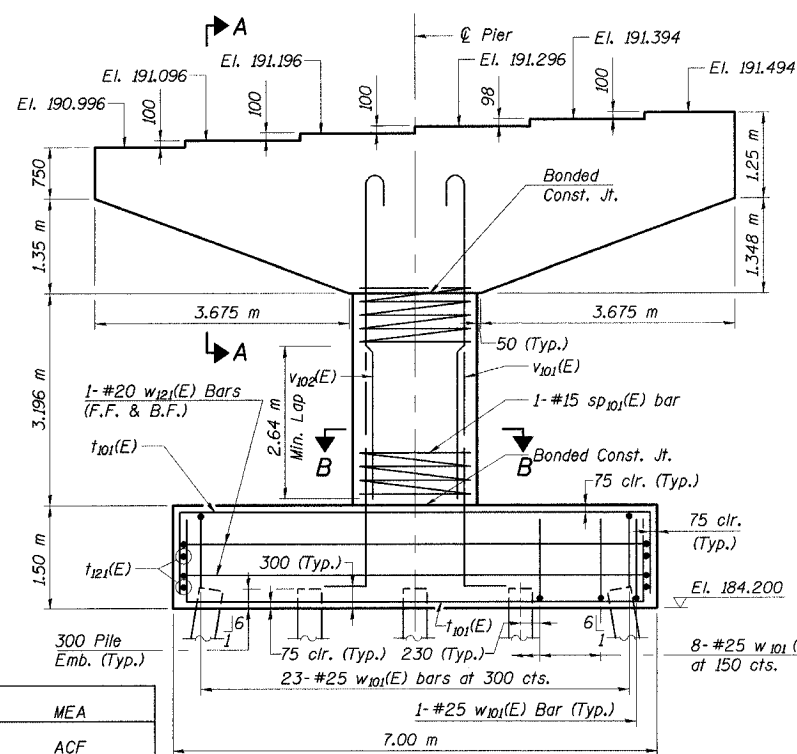
(Footing reinforcement not shown for clarity)

TYPICAL LAPS

Bar Size	Min. Lap
#15	640
#20	790
#25	1320
#30	1850
#35	2640

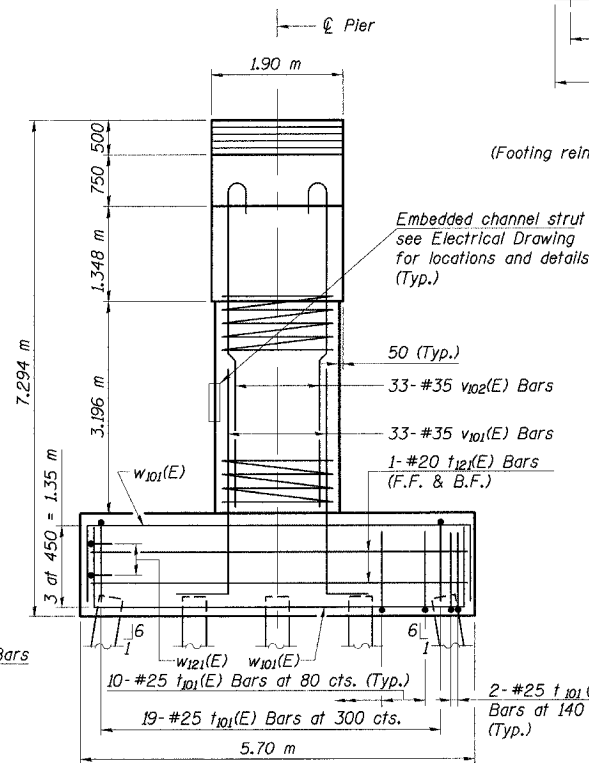


SECTION THRU PIER CAP



ELEVATION

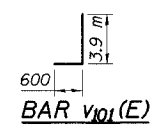
(Looking Upstation)



END VIEW

PILE DATA

Type: HP360x108  
Capacity: 650 kN (Driven to 975 kN Bearing)  
Est. Length: 18.6 m  
No. Req'd.: 25 (Includes 1 Test Pile)  
Test Pile Driven to 1463 kN



BAR v101(E)

BAR v102(E)



BAR w121(E)

BARS w101(E), t101(E)

TABLE OF DIMENSIONS

Rebar	A	B
S101(E)	1.8 m	720
S102(E)	1.8 m	830
S103(E)	1.8 m	1.060 m
S104(E)	1.8 m	1.460 m
S111(E)	300	720
S112(E)	300	830
S113(E)	300	1.060 m
S114(E)	300	1.460 m

Notes:

- Space reinforcement in cap to miss anchor bolts. See Sheet 65 for anchor bolt spacing.
- Four steps monolithically with cap beam.
- All exposed edges shall have standard 20 mm chamfers.
- All dimensions are in millimeters (mm) except as noted.
- For backfill material see Footing Layout drawing.

Indicates battered pile

ILLINOIS DEPARTMENT OF TRANSPORTATION  
I-94/IL 394 SOUTH BOUND

PIER 1

WB I-80/94 TO SB IL 394 - RAMP G  
FAI 80/94 - FAP 332 SECTION 0203.1B  
COOK COUNTY

STA. 120+796.063 STRUCTURE NO. 016-2804  
DATE 3/23/05  
SCALE ---

HNTB

J:\Beauchamp  
E:\34562\CADD\01\CTR-26-2804\cadd\ps150214e-2804.dgn  
28-MAR-2005 12:28

DESIGNED	MEA
CHECKED	ACF
DRAWN	JM
CHECKED	GPM