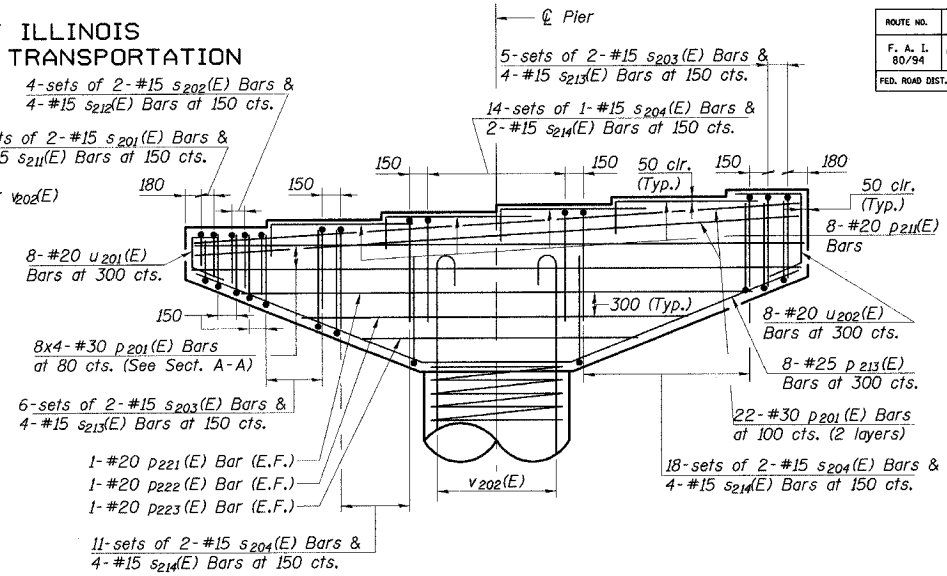
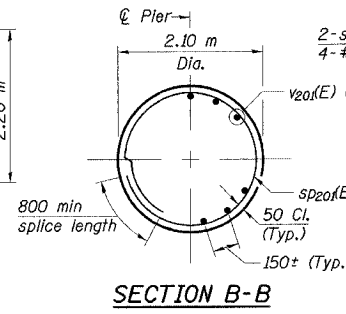
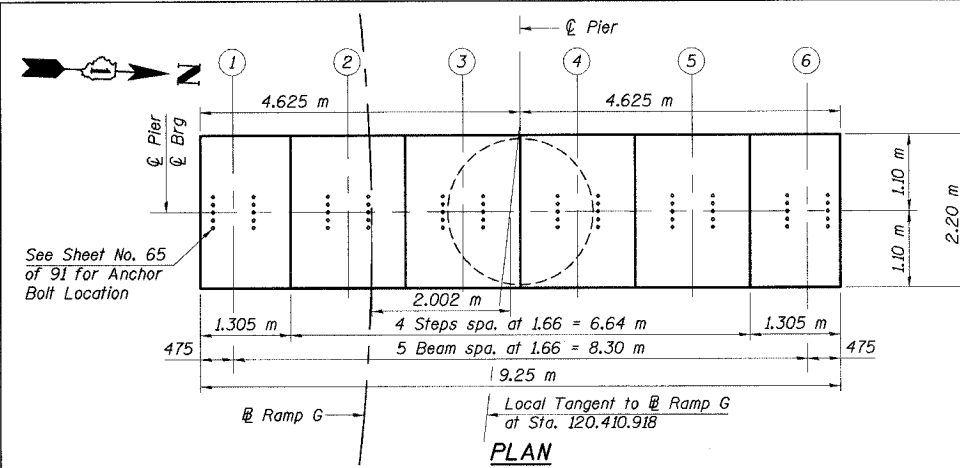


STATE OF ILLINOIS  
DEPARTMENT OF TRANSPORTATION

ROUTE NO.	SECTION	COUNTY	TOTAL SHEETS	SHEET NO.	SHEET NO. 75 91 SHEETS
F. A. I. 80/94	0203.1B	COOK	200	137	
FED. ROAD DIST. NO. 1 ILLINOIS FED. AID PROJECT-					
CONTRACT NO. 62854					



BILL OF MATERIAL

Bar	No.	Size	Length (m)	Shape
P201(E)	76	#30	9.15	
P211(E)	32	#20	2.77	
P213(E)	8	#25	9.60	
P221(E)	2	#20	7.00	
P222(E)	2	#20	5.45	
P223(E)	2	#20	3.95	
S201(E)	4	#15	3.54	
S202(E)	8	#15	3.76	
S203(E)	22	#15	4.22	
S204(E)	72	#15	5.02	
S211(E)	8	#15	1.74	
S212(E)	16	#15	1.96	
S213(E)	44	#15	2.42	
S214(E)	144	#15	3.20	
U201(E)	8	#20	1.87	
U202(E)	8	#20	2.84	
W201(E)	69	#25	9.25	
W221(E)	4	#20	7.40	
T201(E)	73	#25	9.25	
T221(E)	4	#20	6.85	
V201(E)	40	#35	4.50	
V202(E)	40	#35	9.31	
SP20(E)	1	#15	* 7.12	NNN

ITEM	UNIT	QUANTITY
Driving Steel Piles	m	388.8
Furnishing Steel Piles		
HP360x108	m	388.8
Test Pile Steel HP360x108	Each	1
Structure Excavation	m <sup>3</sup>	104.0
Concrete Structures	m <sup>3</sup>	134.5
Reinforcement Bars, Epoxy Coated	kg	16,580

TYPICAL LAPS

Bar Size	Min. Lap
#15	640
#20	790
#25	1320
#30	1850
#35	2640

PILE DATA

Type: HP360x108  
Capacity: 650 kN (Driven to 975 kN Bearing)  
Est. Length: 16.2 m  
No. Req'd: 25 (Includes 1 Test Pile)  
Test Pile Driven to 1463 kN

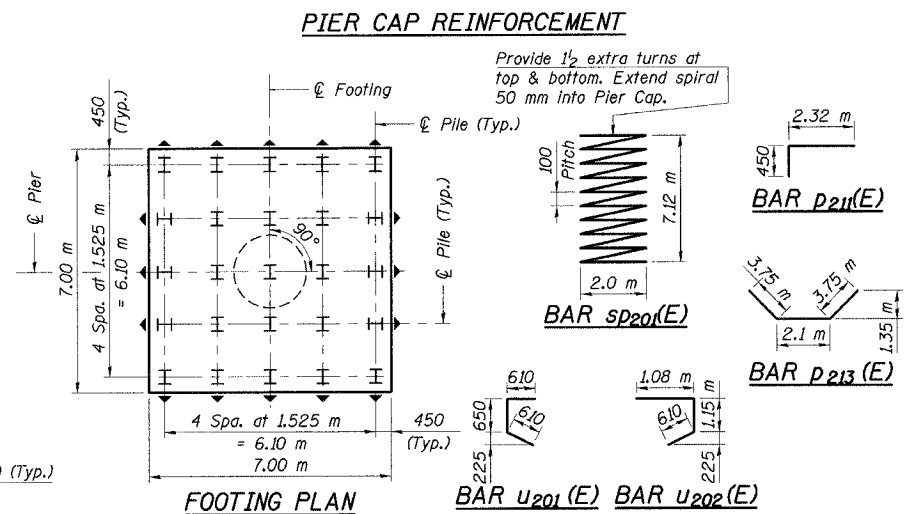
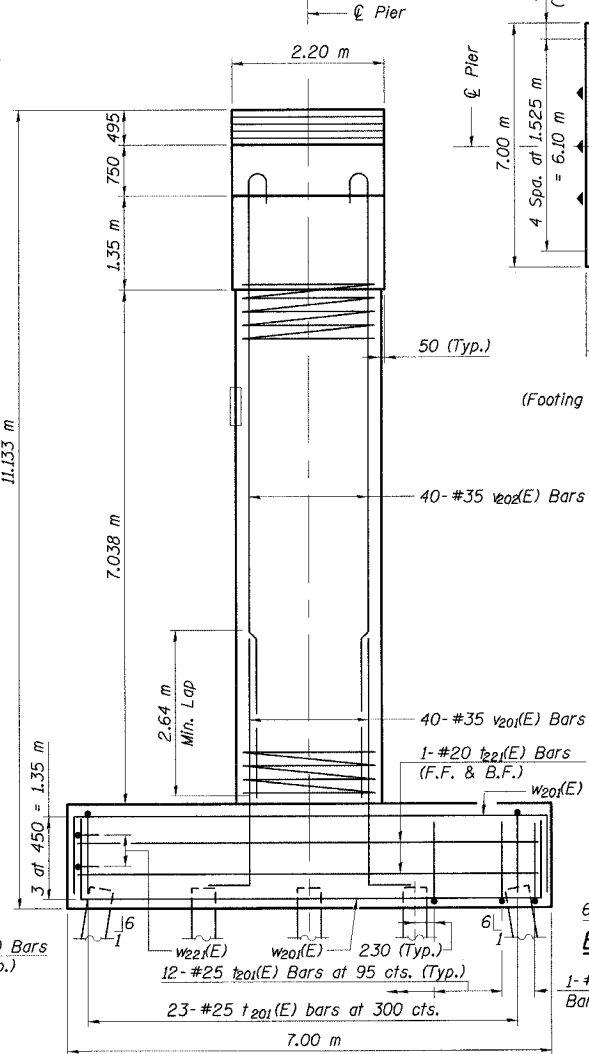
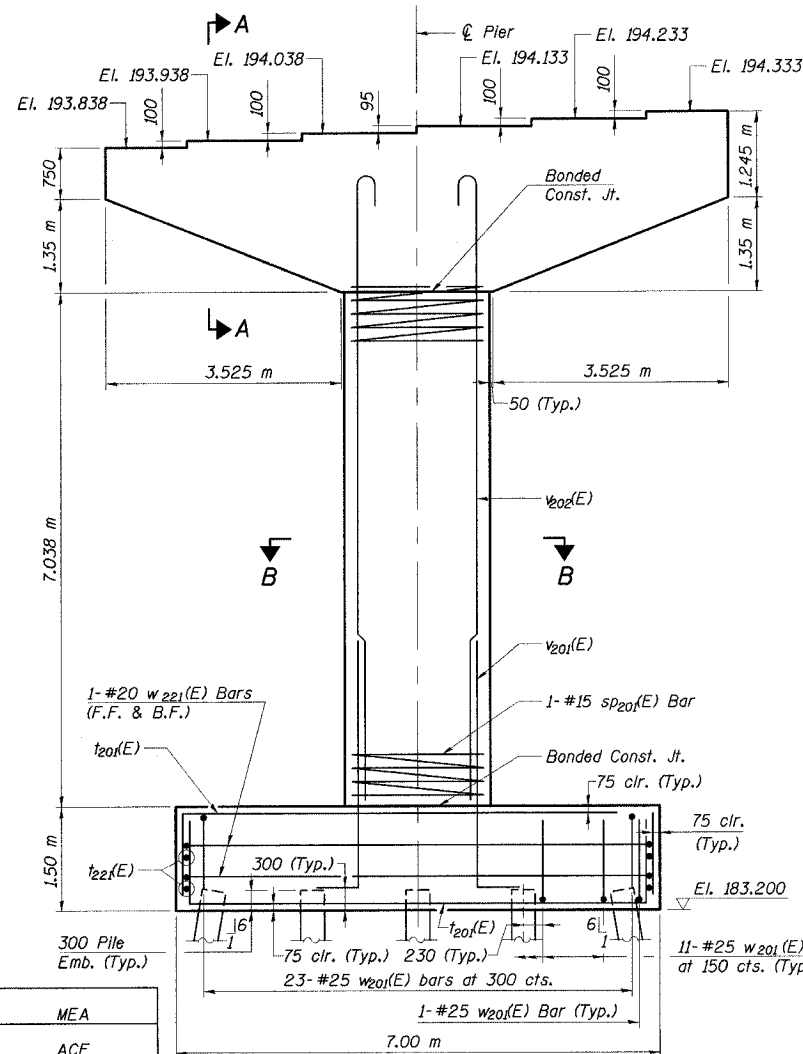


TABLE OF DIMENSIONS

Rebar	A	B
S201(E)	2.1 m	720
S202(E)	2.1 m	830
S203(E)	2.1 m	1,060 m
S204(E)	2.1 m	1,450 m
S211(E)	300	720
S212(E)	300	830
S213(E)	300	1,060 m
S214(E)	300	1,450 m

- Notes:
- Space reinforcement in cap to miss anchor bolts. See Sheet 65 for anchor bolt spacing.
  - Pour steps monolithically with cap beam.
  - All exposed edges shall have standard 20 mm chamfers.
  - All dimensions are in millimeters (mm) except as noted.
  - For backfill material see Footing Layout drawing.

DESIGNED	MEA
CHECKED	ACF
DRAWN	JM
CHECKED	GPM

ELEVATION  
(Looking Upstation)

END VIEW

SECTION THRU PIER CAP

ILLINOIS DEPARTMENT OF TRANSPORTATION  
I-94/IL 394 SOUTH BOUND  
PIER 2  
WB I-80/94 TO SB IL 394 - RAMP G  
FAI 80/94 - FAP 332 SECTION 0203.1B  
COOK COUNTY  
STA. 120+796.063 STRUCTURE NO. 016-2804  
DATE 3/23/05  
SCALE ---

**HNTB**

J:\Beauchamp\EA\34562\CADD\N1\CTR\_28\_2804\cadd\p1500224\_2804.dgn  
28-MAR-2005 12:28