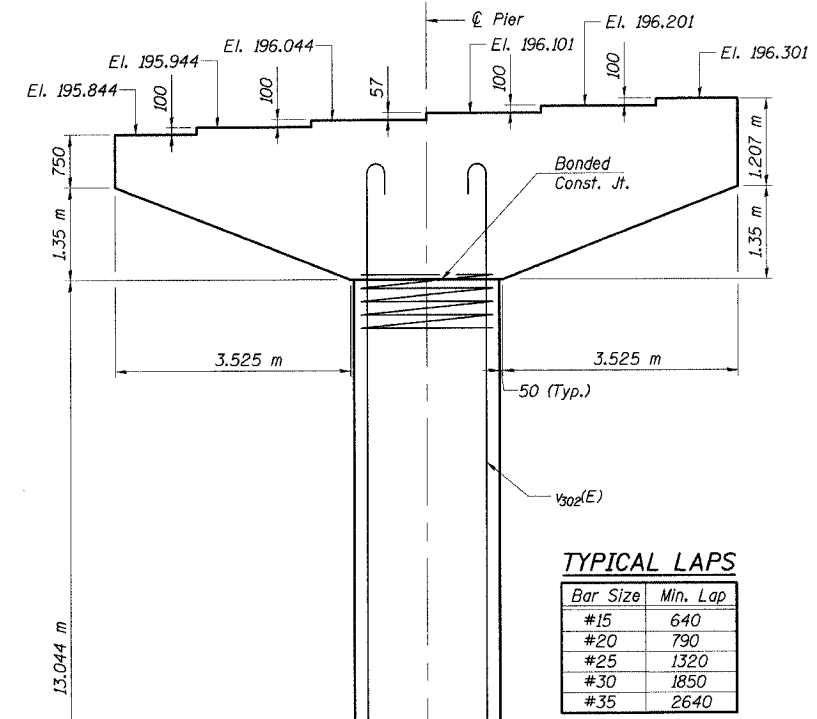
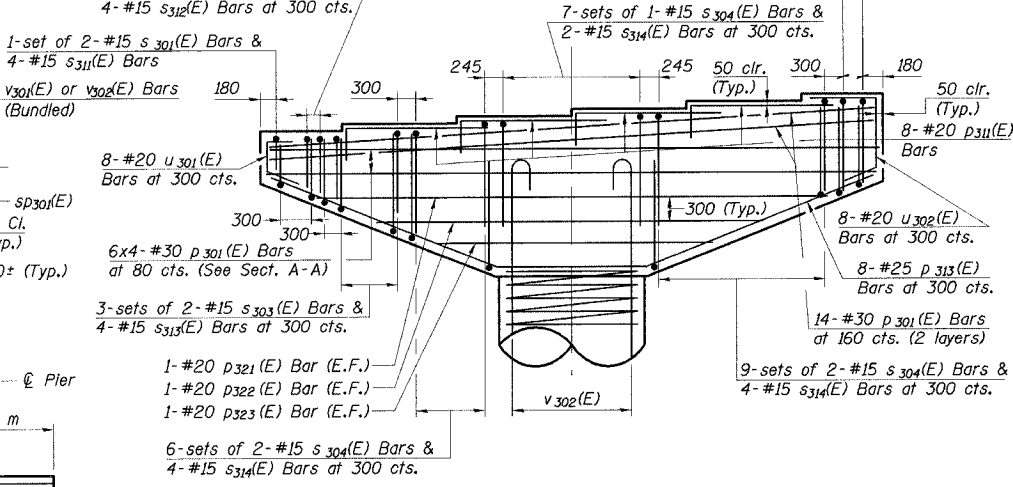
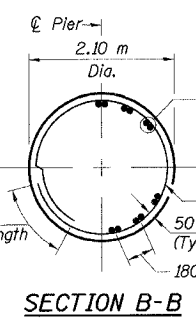
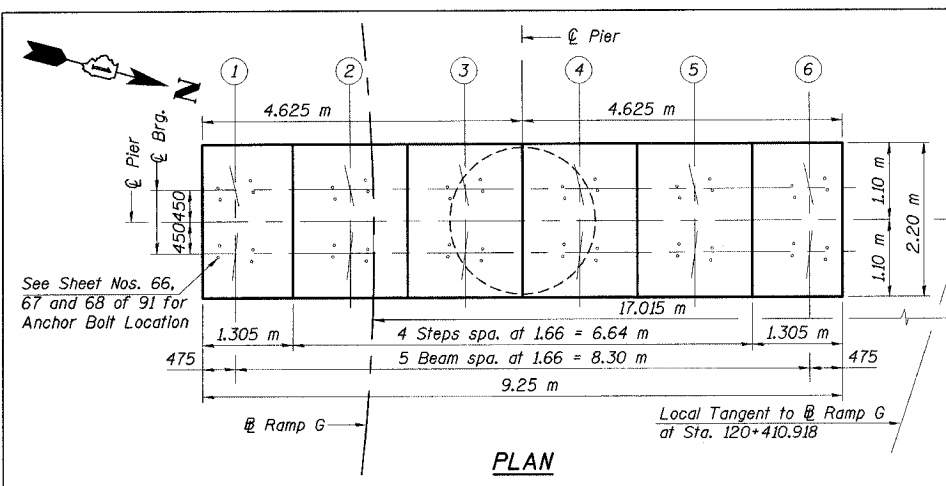


STATE OF ILLINOIS  
DEPARTMENT OF TRANSPORTATION

ROUTE NO.	SECTION	COUNTY	TOTAL SHEETS	SHEET NO.
F. A. I. 80/94	0203.1B	COOK	200	138
FED. ROAD DIST. NO. 1 ILLINOIS FED. AID PROJECT - CONTRACT NO. 62854				
SHEET NO. 76				
91 SHEETS				

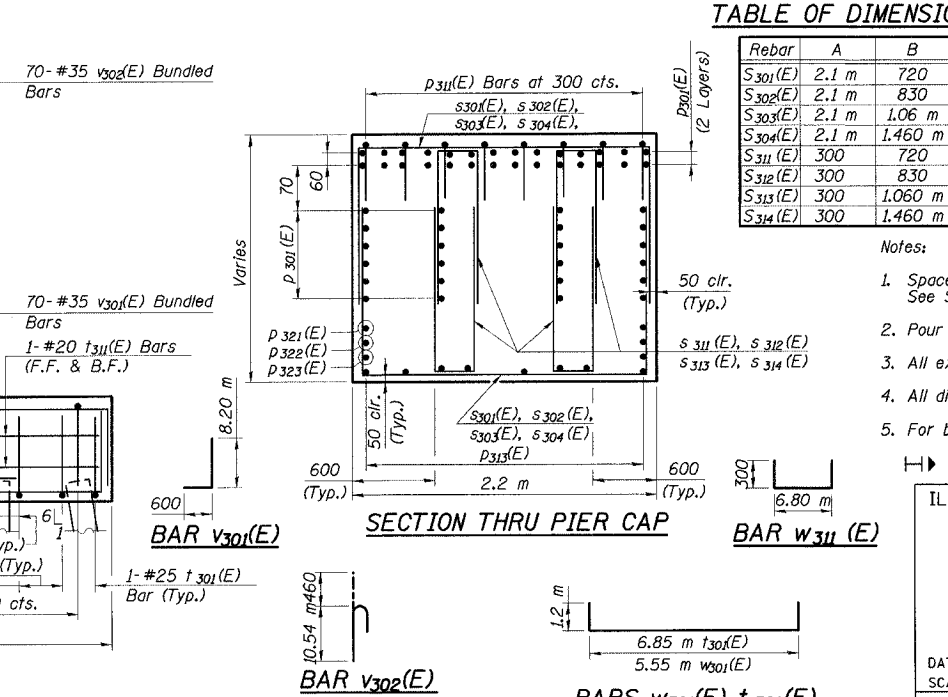
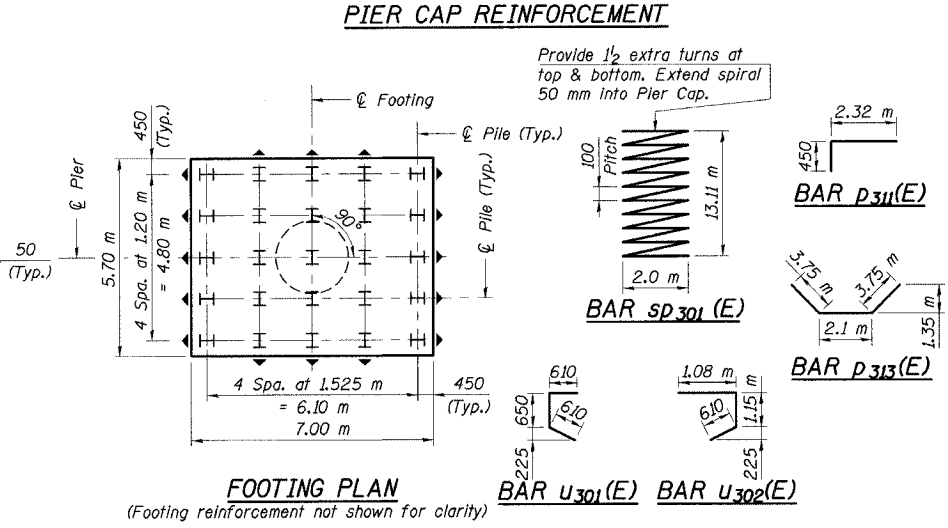
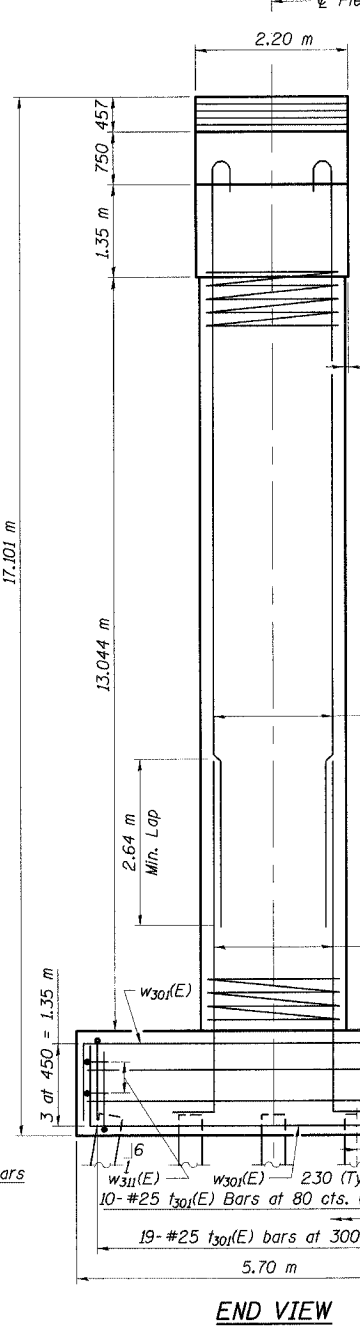
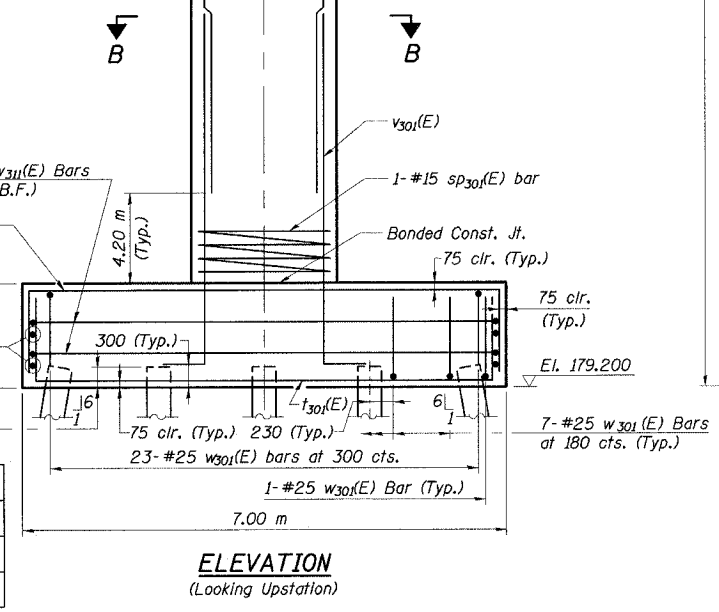


**TYPICAL LAPS**

Bar Size	Min. Lap
#15	640
#20	790
#25	1320
#30	1850
#35	2640

JBeauchamp  
 E:\34562\CADD\N1\CTR\_28\_2804\cda\p1500234a\_2804.dgn  
 28-MAR-2005 12:28

DESIGNED	MEA
CHECKED	ACF
DRAWN	JM
CHECKED	GPM



**BILL OF MATERIAL**

Bar	No.	Size	Length (m)	Shape
P301(E)	52	#30	9.15	
P311(E)	32	#20	2.77	
P313(E)	8	#25	9.60	
P321(E)	2	#20	7.00	
P322(E)	2	#20	5.45	
P323(E)	2	#20	3.95	
S301(E)	2	#15	3.54	
S302(E)	4	#15	3.76	
S303(E)	12	#15	4.22	
S304(E)	37	#15	5.02	
S311(E)	4	#15	1.74	
S312(E)	8	#15	1.96	
S313(E)	24	#15	2.42	
S314(E)	74	#15	3.20	
U301(E)	8	#20	1.87	
U302(E)	8	#20	2.84	
W301(E)	53	#25	7.95	
W311(E)	4	#20	7.40	
T301(E)	61	#25	9.25	
T311(E)	4	#20	5.55	
V301(E)	70	#35	8.80	
V302(E)	70	#35	11.00	
SP301(E)	1	#15	* 13.11	NNN

ITEM	UNIT	QUANTITY
Driving Steel Piles	m	338.4
Furnishing Steel Piles		
HP360x108	m	338.4
Test Pile Steel HP360x108	Each	1
Structure Excavation	m <sup>3</sup>	134.1
Concrete Structures	m <sup>3</sup>	141.6
Reinforcement Bars, Epoxy Coated	kg	20,360

Reinforcement bars designated (E) shall be epoxy coated.  
\* Length is height of spiral

**TABLE OF DIMENSIONS**

Rebar	A	B
S301(E)	2.1 m	720
S302(E)	2.1 m	830
S303(E)	2.1 m	1.06 m
S304(E)	2.1 m	1.460 m
S311(E)	300	720
S312(E)	300	830
S313(E)	300	1.060 m
S314(E)	300	1.460 m

**BARS S301(E), S302(E), S303(E), S304(E), S311(E), S312(E), S313(E), S314(E)**

**PILE DATA**  
 Type: HP360x108  
 Capacity: 650 kN (Driven to 975 kN Bearing)  
 Est. Length: 14.1 m  
 No. Req'd.: 25 (Includes 1 Test Pile)  
 Test Pile Driven to 1463 kN

- Notes:
- Space reinforcement in cap to miss anchor bolts. See Sheet 65 for anchor bolt spacing.
  - Pour steps monolithically with cap beam.
  - All exposed edges shall have standard 20 mm chamfers.
  - All dimensions are in millimeters (mm) except as noted.
  - For backfill material see Footing Layout drawing.
- ↳ Indicates battered pile

ILLINOIS DEPARTMENT OF TRANSPORTATION  
 I-94/IL 394 SOUTH BOUND  
**PIER 3**  
 WB I-80/94 TO SB IL 394 - RAMP G  
 FAI 80/94 - FAP 332 SECTION 0203.1B  
 COOK COUNTY  
 STA. 120+796.063 STRUCTURE NO. 016-2804  
 DATE 3/23/05  
 SCALE ---  
**HNTB**