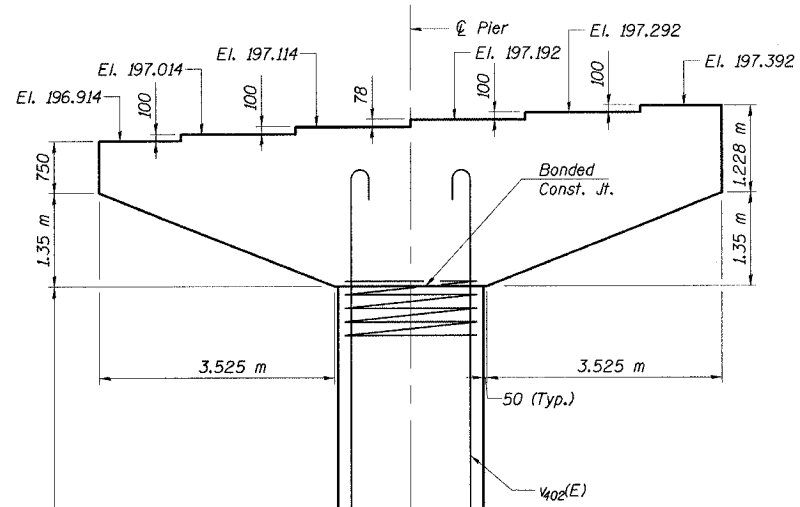
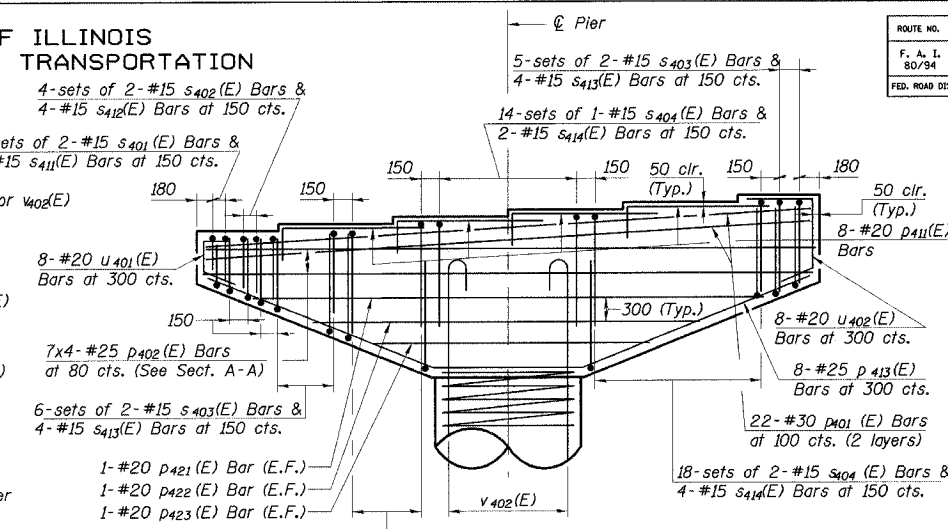
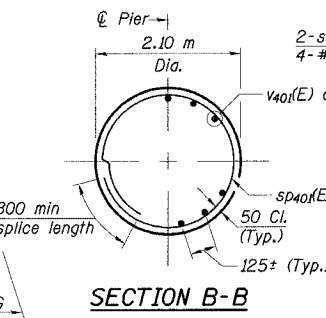
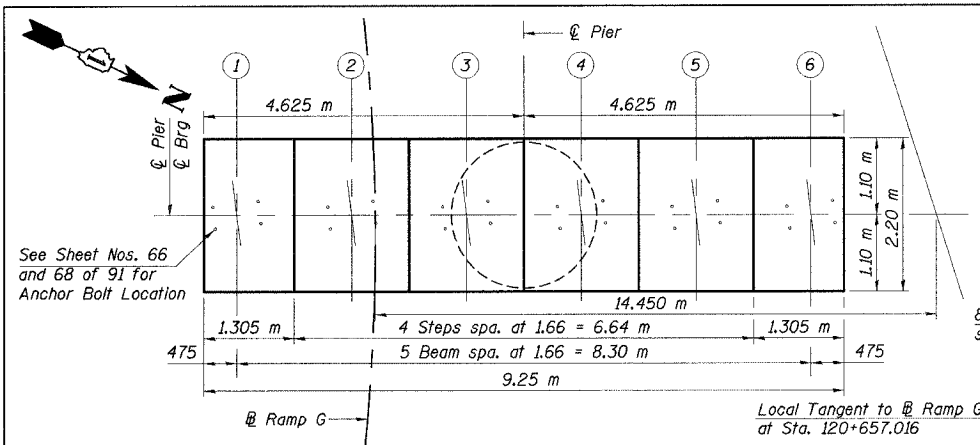


STATE OF ILLINOIS
DEPARTMENT OF TRANSPORTATION

ROUTE NO.	SECTION	COUNTY	TOTAL SHEETS	SHEET NO.	SHEET NO. 77
F. A. I. 80/94	0203JB	COOK	200	139	91 SHEETS
FED. ROAD DIST. NO. 1		ILLINOIS FED. AID PROJECT-		CONTRACT NO. 62854	



TYPICAL LAPS

Bar Size	Min. Lap
#15	640
#20	790
#25	1320
#30	1850
#35	2640

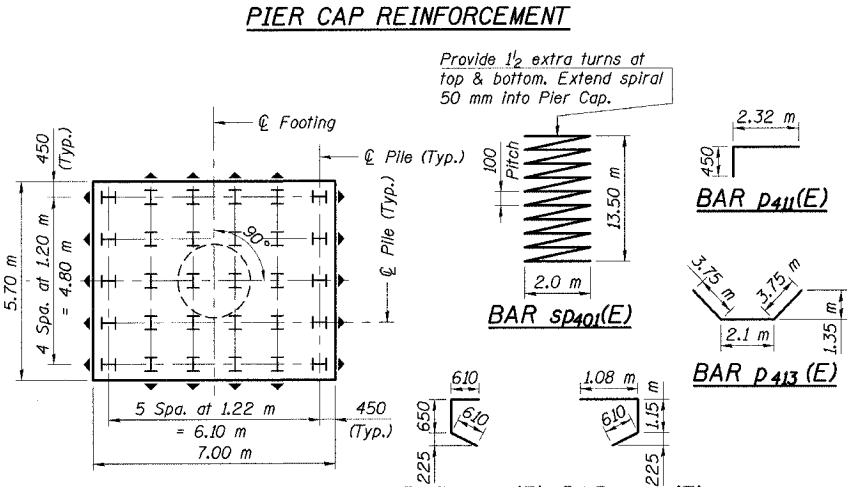
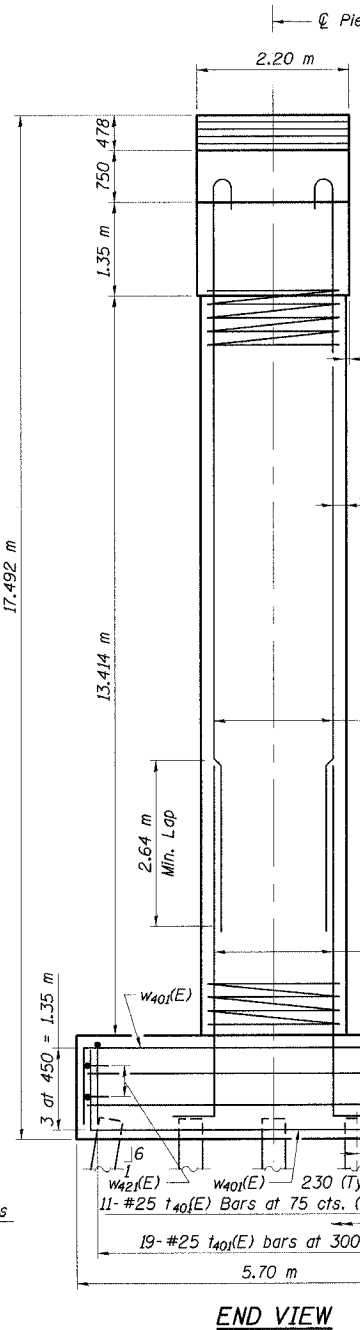


TABLE OF DIMENSIONS

Rebar	A	B
S401(E)	2.1 m	720
S402(E)	2.1 m	830
S403(E)	2.1 m	1.06 m
S404(E)	2.1 m	1.460 m
S411(E)	300	720
S412(E)	300	830
S413(E)	300	1.06 m
S414(E)	300	1.460 m

BILL OF MATERIAL

Bar	No.	Size	Length (m)	Shape
P401(E)	44	#30	9.15	—
P402(E)	28	#25	9.15	—
P411(E)	32	#20	2.77	—
P413(E)	8	#25	9.60	—
P421(E)	2	#20	7.00	—
P422(E)	2	#20	5.45	—
P423(E)	2	#20	3.95	—
S401(E)	4	#15	3.54	—
S402(E)	8	#15	3.76	—
S403(E)	22	#15	4.22	—
S404(E)	72	#15	5.02	—
S411(E)	8	#15	1.74	—
S412(E)	16	#15	1.96	—
S413(E)	44	#15	2.42	—
S414(E)	144	#15	3.20	—
U401(E)	8	#20	1.87	—
U402(E)	8	#20	2.84	—
W401(E)	65	#25	7.95	—
W421(E)	4	#20	7.40	—
T401(E)	65	#25	9.25	—
T421(E)	4	#20	5.55	—
V401(E)	50	#35	9.10	—
V402(E)	50	#35	11.00	—
SP401(E)	1	#15	*13.50	NNN

ITEM

ITEM	UNIT	QUANTITY
Driving Steel Piles	m	536.5
Furnishing Steel Piles		
HP360x108	m	536.5
Test Pile Steel HP360x108	Each	1
Structure Excavation	m ³	172.4
Concrete Structures	m ³	142.9
Reinforcement Bars, Epoxy Coated	kg	19,370

Reinforcement bars designated (E) shall be epoxy coated.
*Length is height of spiral

BARS S401(E), S402(E), S403(E), S404(E), S411(E), S412(E), S413(E), S414(E)

PILE DATA
Type: HP360x108
Capacity: 650 kN (Driven to 975 kN Bearing)
Est. Length: 18.5 m
No. Req'd.: 30 (Includes 1 Test Pile)
Test Pile Driven to 1463 kN

- Notes:
- Space reinforcement in cap to miss anchor bolts. See Sheet 65 for anchor bolt spacing.
 - Pour steps monolithically with cap beam.
 - All exposed edges shall have standard 20 mm chamfers.
 - All dimensions are in millimeters (mm) except as noted.
 - For backfill material see Footing Layout drawing.

DESIGNED	MEA
CHECKED	ACF
DRAWN	JM
CHECKED	GPM

JBeauchamp
E:\34562\CADD\1\CTR_28_2804\cadd\ps150044a_2804.dgn
28-MAR-2005 12:28

ILLINOIS DEPARTMENT OF TRANSPORTATION
I-94/IL 394 SOUTH BOUND

PIER 4

WB I-80/94 TO SB IL 394 - RAMP G
FAI 80/94 - FAP 332 SECTION 0203JB
COOK COUNTY

STA. 120+796.063 STRUCTURE NO. 016-2804
DATE 3/23/05
SCALE ---

HNTB