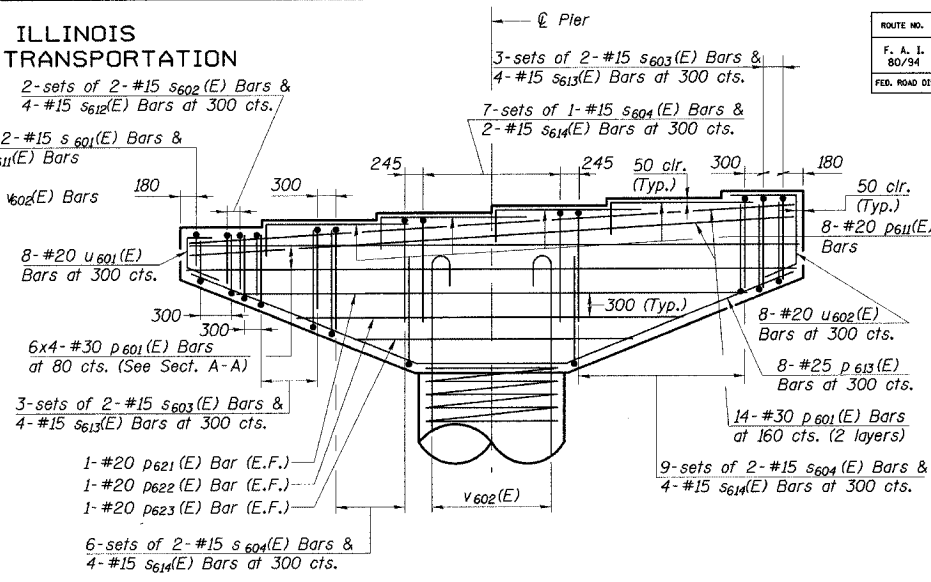
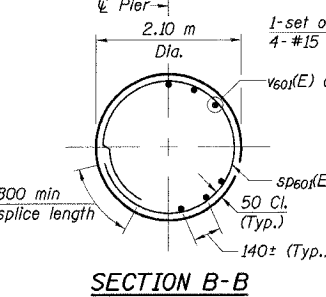
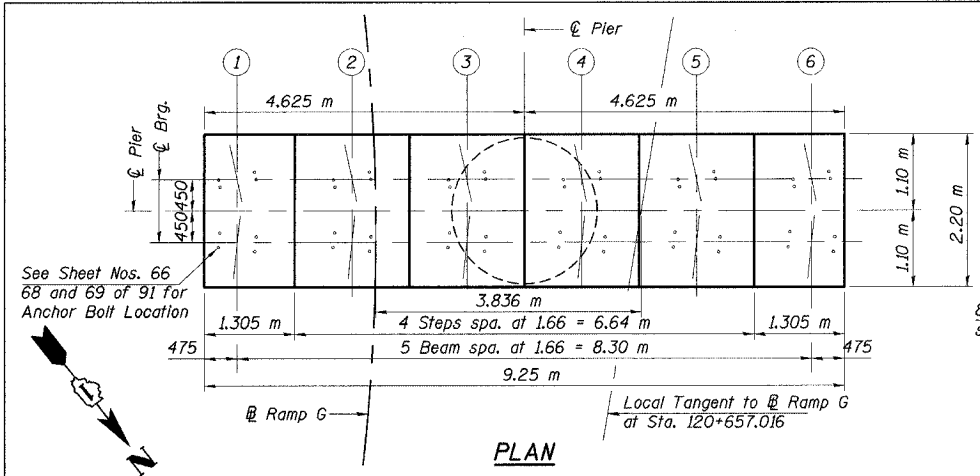


STATE OF ILLINOIS
DEPARTMENT OF TRANSPORTATION

ROUTE NO.	SECTION	COUNTY	TOTAL SHEETS	SHEET NO.	SHEET NO. 79
F. A. I. 80/94	0203.1B	COOK	200	141	91 SHEETS
FED. ROAD DIST. NO. 1 ILLINOIS FED. AID PROJECT-			CONTRACT NO. 62854		



BILL OF MATERIAL

Bar	No.	Size	Length (m)	Shape
P601 (E)	52	#30	9.15	
P611 (E)	32	#20	2.77	
P613 (E)	8	#25	9.60	
P621 (E)	2	#20	7.00	
P622 (E)	2	#20	5.45	
P623 (E)	2	#20	3.95	
	0	#	0.00	
S601 (E)	2	#15	3.54	
S602 (E)	4	#15	3.76	
S603 (E)	12	#15	4.22	
S604 (E)	37	#15	5.02	
S611 (E)	4	#15	1.74	
S612 (E)	8	#15	1.96	
S613 (E)	24	#15	2.42	
S614 (E)	74	#15	3.20	
U601 (E)	8	#20	1.87	
U602 (E)	8	#20	2.84	
W601 (E)	42	#25	6.75	
W611 (E)	4	#20	6.40	
T601 (E)	44	#25	8.25	
T611 (E)	4	#20	4.35	
V601 (E)	45	#35	4.60	
V602 (E)	45	#35	8.46	
SP601 (E)	1	#15	* 6.26	NNN

TYPICAL LAPS

Bar Size	Min. Lap
#15	640
#20	790
#25	1320
#30	1850
#35	2640

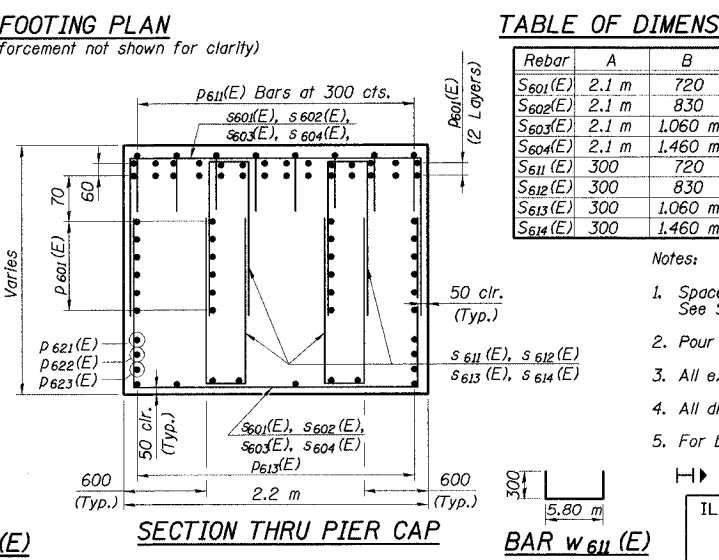
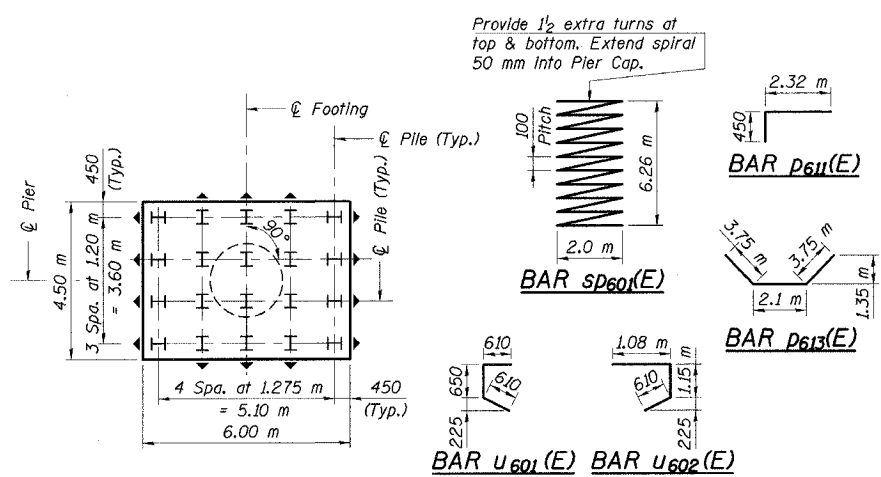
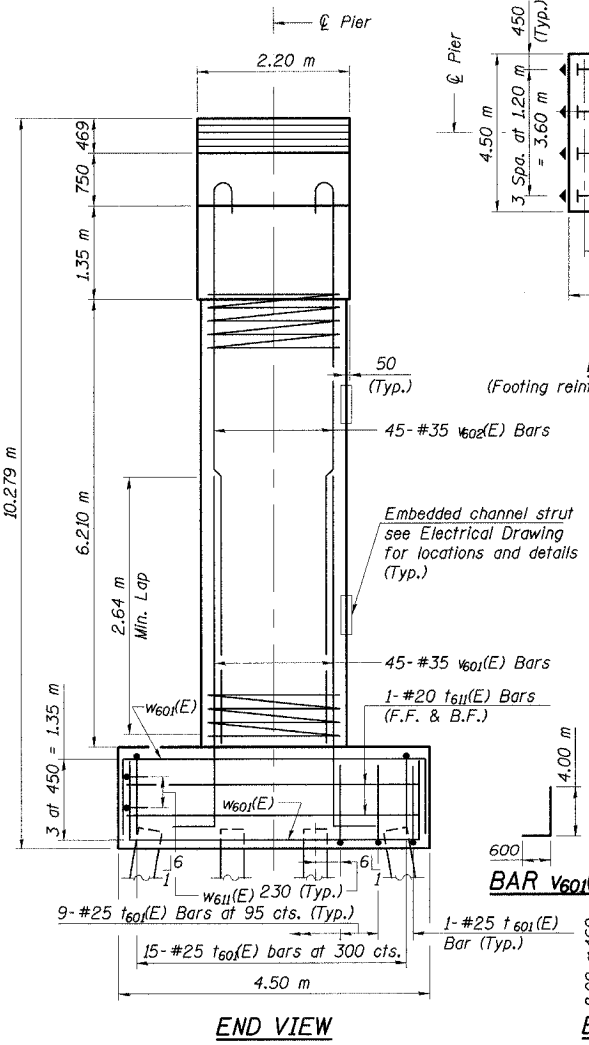
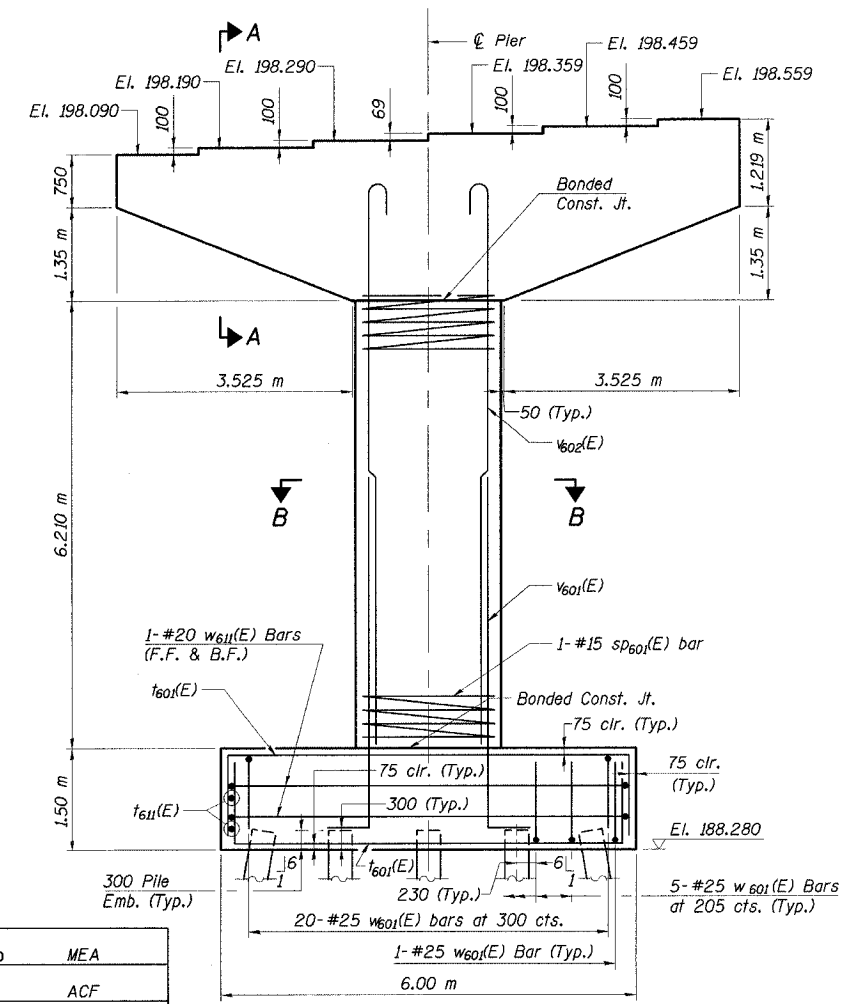


TABLE OF DIMENSIONS

Rebar	A	B
S601 (E)	2.1 m	720
S602 (E)	2.1 m	830
S603 (E)	2.1 m	1,060 m
S604 (E)	2.1 m	1,460 m
S611 (E)	300	720
S612 (E)	300	830
S613 (E)	300	1,060 m
S614 (E)	300	1,460 m

BARS S601(E), S602(E), S603(E), S604(E), S611(E), S612(E), S613(E), S614(E)

PILE DATA

Type: HP360x108
Capacity: 650 kN (Driven to 975 kN Bearing)
Est. Length: 21.0 m
No. Req'd.: 20 (Includes 1 Test Pile)
Test Pile Driven to 1463 kN

- Notes:
- Space reinforcement in cap to miss anchor bolts. See Sheet 65 for anchor bolt spacing.
 - Pour steps monolithically with cap beam.
 - All exposed edges shall have standard 20 mm chamfers.
 - All dimensions are in millimeters (mm) except as noted.
 - For backfill material see Footing Layout drawing.

DESIGNED	MEA
CHECKED	ACF
DRAWN	JM
CHECKED	GPM

ILLINOIS DEPARTMENT OF TRANSPORTATION
I-94/IL 394 SOUTH BOUND

PIER 6

WB I-80/94 TO SB IL 394 - RAMP G
FAI 80/94 - FAP 332 SECTION 0203.1B
COOK COUNTY
STA. 120+796.063 STRUCTURE NO. 016-2804
DATE 3/23/05
SCALE ---

HNTB

JBeauchamp
 E:\34562\CADD\1\CTR_28_2804\cda\p150064a_2804.dgn
 28-MAR-2005 12:27