

STATE OF ILLINOIS
DEPARTMENT OF TRANSPORTATION

ROUTE NO.	SECTION	COUNTY	TOTAL SHEETS	SHEET NO.	SHEET NO. 80 91 SHEETS
F. A. I. 80/94	0203.1B	COOK	200	142	
FED. ROAD DIST. NO. 1		ILLINOIS FED. AID PROJECT-		CONTRACT NO. 62854	

BILL OF MATERIAL

Bar	No.	Size	Length (m)	Shape
P701(E)	44	#30	9.15	—
P702(E)	32	#25	9.15	—
P711(E)	32	#20	2.77	—
P713(E)	8	#25	9.60	—
P721(E)	2	#20	7.00	—
P722(E)	2	#20	5.45	—
P723(E)	2	#20	3.95	—
S701(E)	4	#15	3.54	—
S702(E)	8	#15	3.76	—
S703(E)	22	#15	4.22	—
S704(E)	72	#15	5.02	—
S711(E)	8	#15	1.74	—
S712(E)	16	#15	1.96	—
S713(E)	44	#15	2.42	—
S714(E)	144	#15	3.20	—
U701(E)	8	#20	1.87	—
U702(E)	8	#20	2.84	—
W701(E)	63	#25	7.95	—
W711(E)	4	#20	7.90	—
T701(E)	67	#25	9.75	—
T711(E)	4	#20	5.55	—
V701(E)	50	#35	6.50	—
V702(E)	50	#35	11.00	—
SP701(E)	1	#15	* 10.94	NNN

ITEM	UNIT	QUANTITY
Driving Steel Piles	m	505.3
Furnishing Steel Piles	m	505.3
HP360x108	m	505.3
Test Pile Steel HP360x108	Each	1
Structure Excavation	m ³	193.9
Concrete Structures	m ³	138.3
Reinforcement Bars, Epoxy Coated	kg	18,390

Reinforcement bars designated (E) shall be epoxy coated.
*Length is height of spiral

BARS S701(E), S702(E), S703(E), S704(E), S711(E), S712(E), S713(E), S714(E)

PILE DATA

Type: HP360x108
Capacity: 650 kN (Driven to 975 kN Bearing)
Est. Length: 16.3 m
No. Req'd.: 32 (Includes 1 Test Pile)
Test Pile Driven to 1463 kN

- Notes:
- Space reinforcement in cap to miss anchor bolts. See Sheet 65 for anchor bolt spacing.
 - Pour steps monolithically with cap beam.
 - All exposed edges shall have standard 20 mm chamfers.
 - All dimensions are in millimeters (mm) except as noted.
 - For backfill material see Footing Layout drawing.

Indicates battered pile

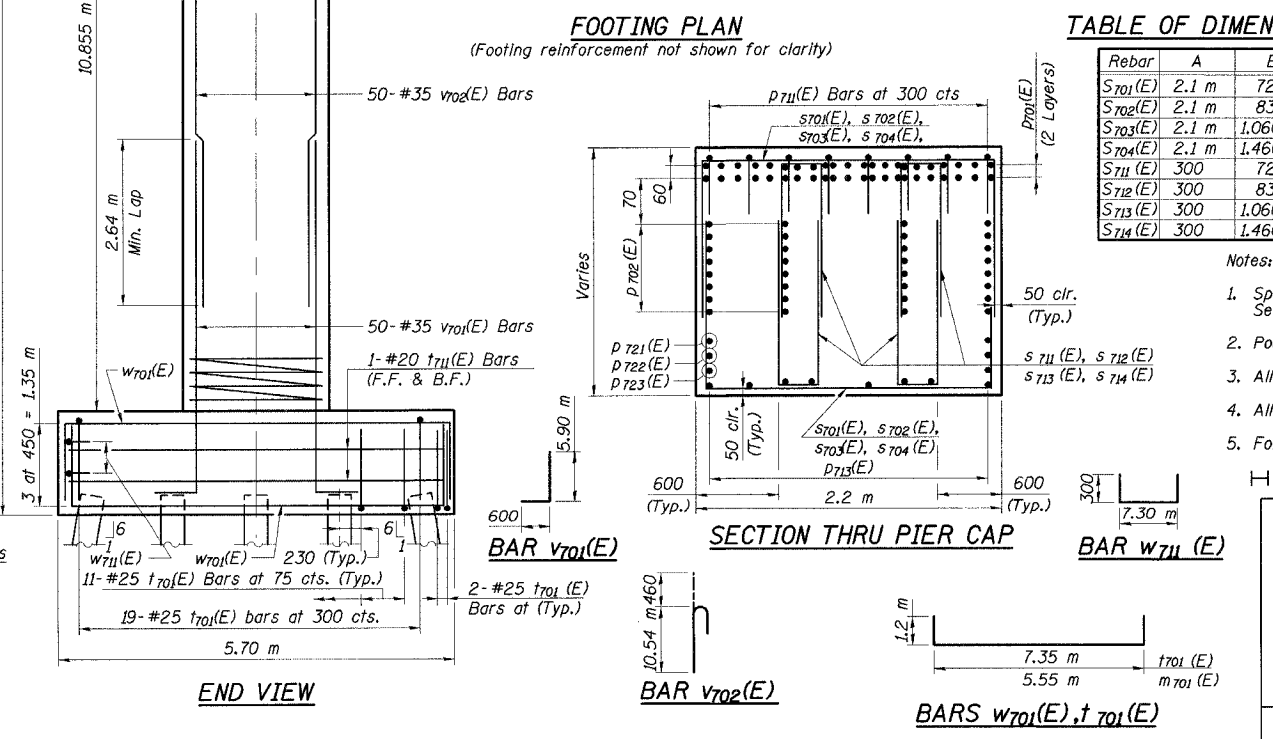
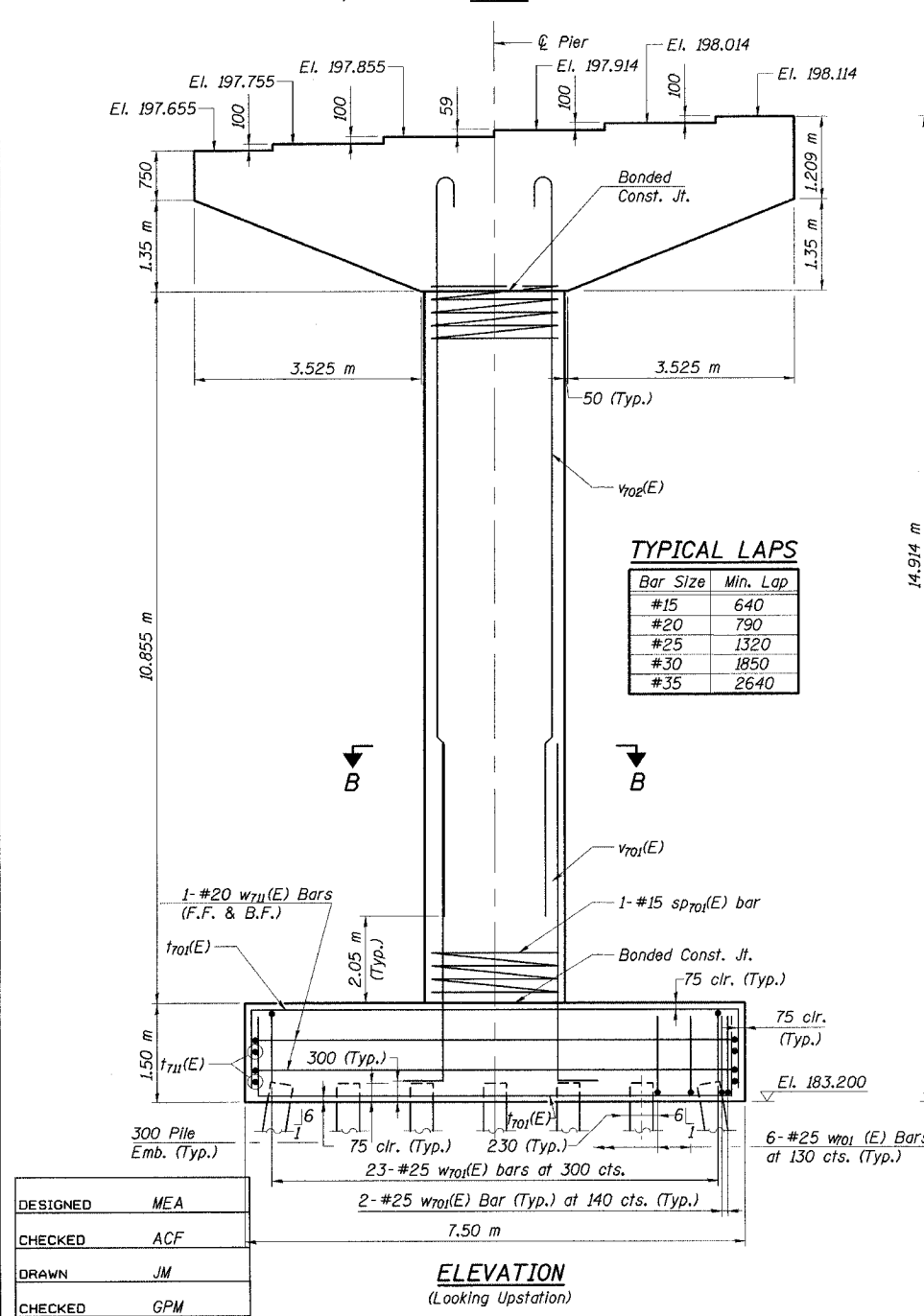
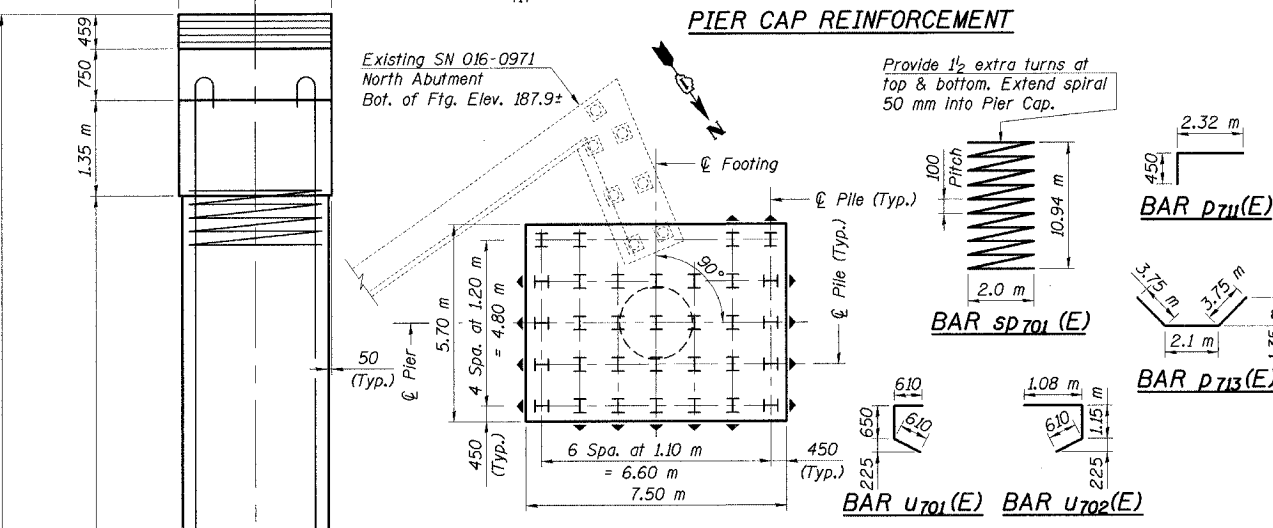
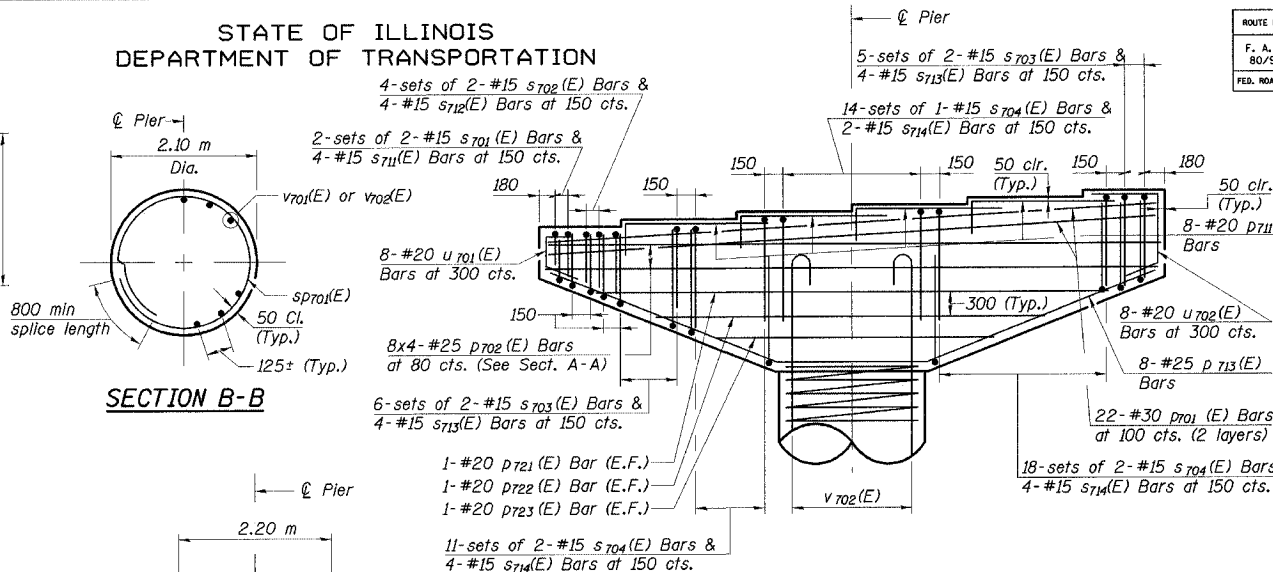
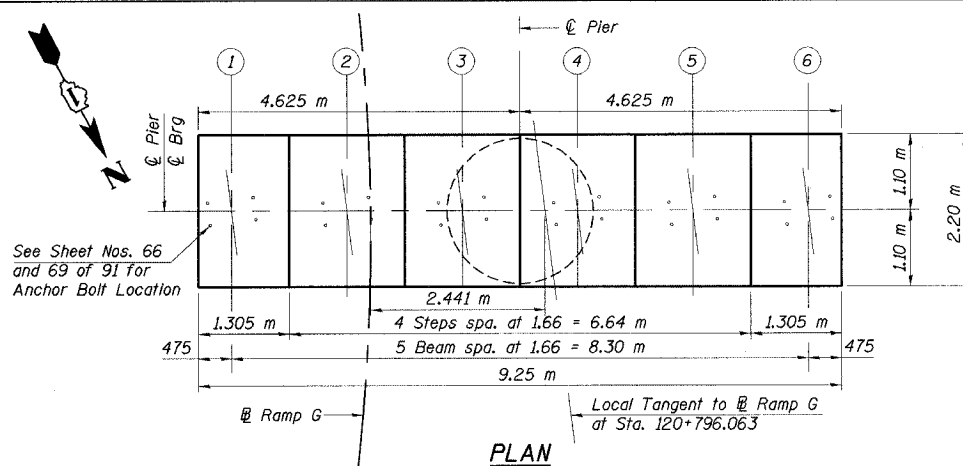
ILLINOIS DEPARTMENT OF TRANSPORTATION
I-94/IL 394 SOUTH BOUND

PIER 7

WB I-80/94 TO SB IL 394 - RAMP G
FAI 80/94 - FAP 332 SECTION 0203.1B
COOK COUNTY
STA. 120+796.063 STRUCTURE NO. 016-2804

DATE 3/23/05
SCALE ---

HNTB



TYPICAL LAPS

Bar Size	Min. Lap
#15	640
#20	790
#25	1320
#30	1850
#35	2640

DESIGNED	MEA
CHECKED	ACF
DRAWN	JM
CHECKED	GPM

J:\Beauchamp
E:\34562\CADD\B\CTR_28-2804\cadd\cadd\150074a_2804.dgn
28-MAR-2005 12:27