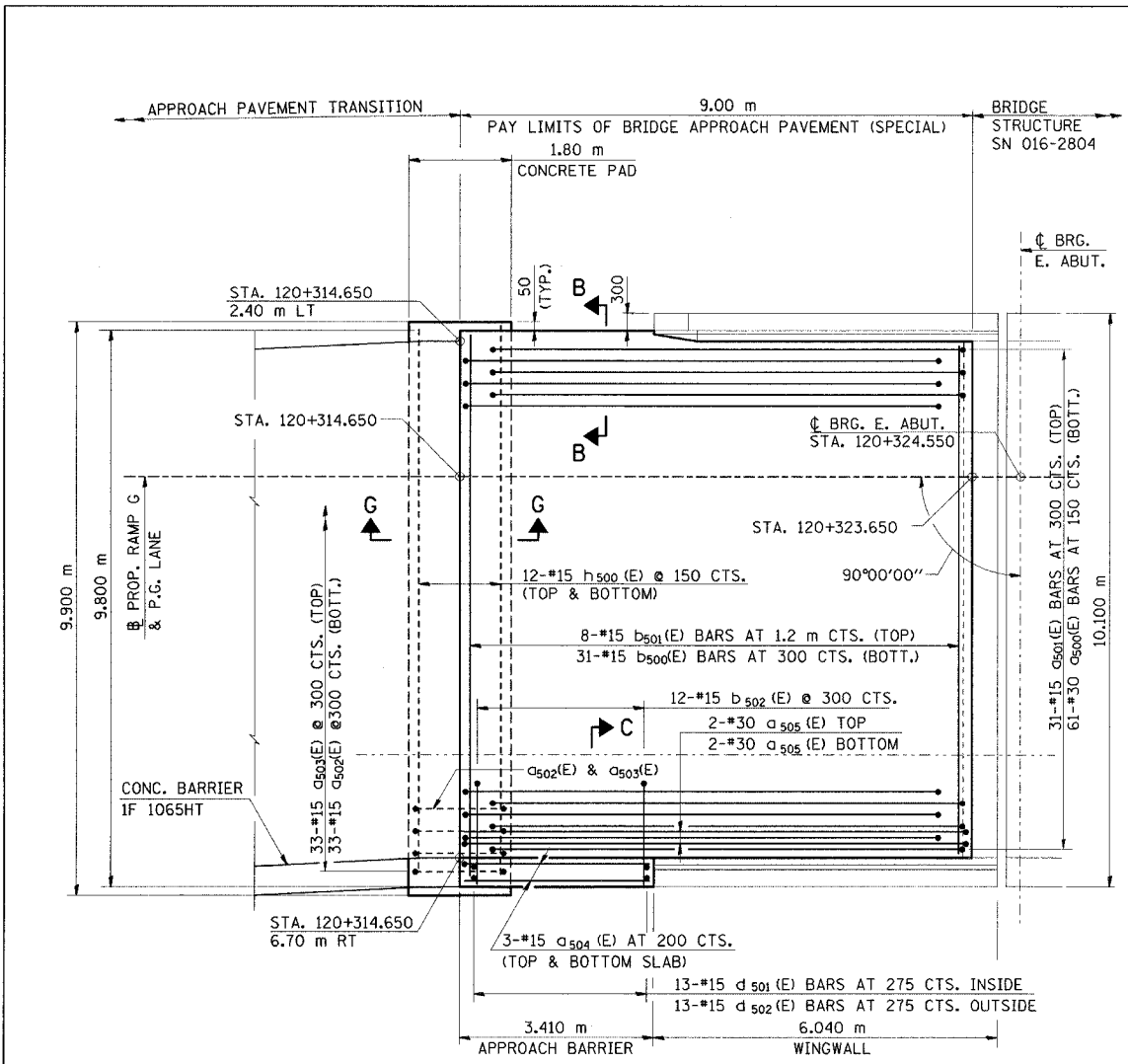
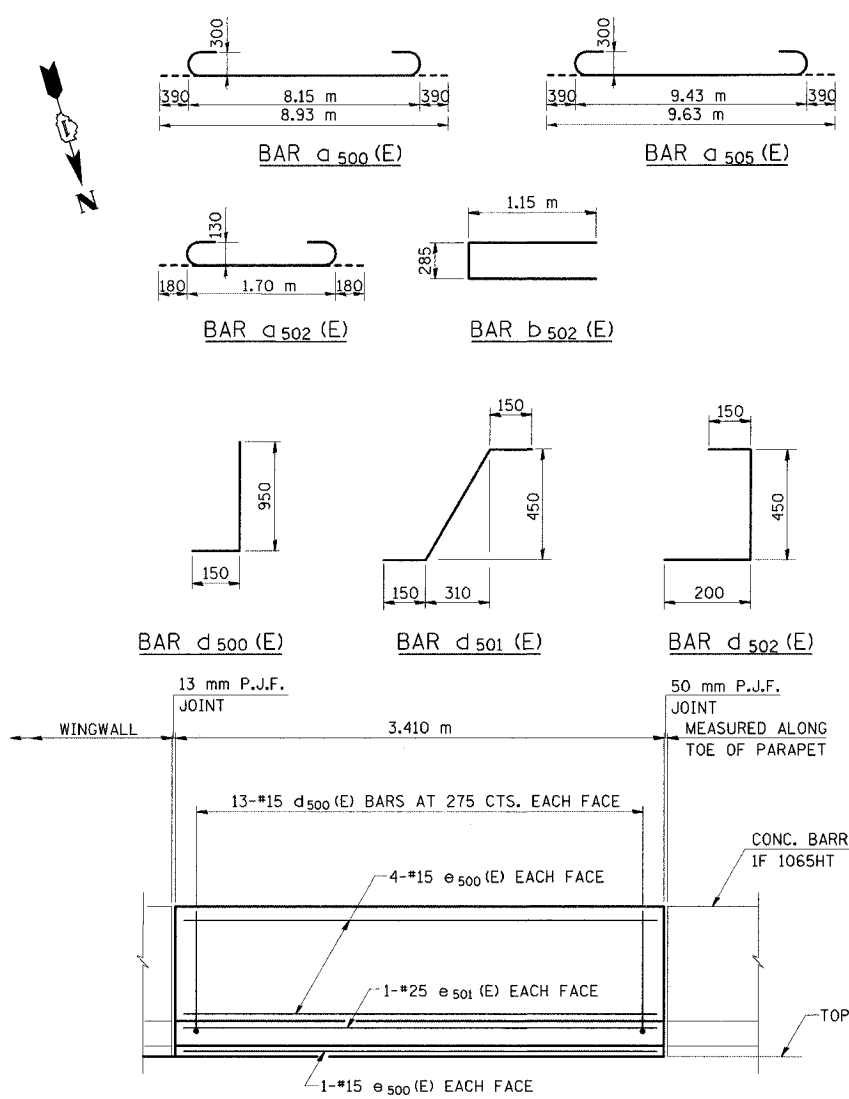


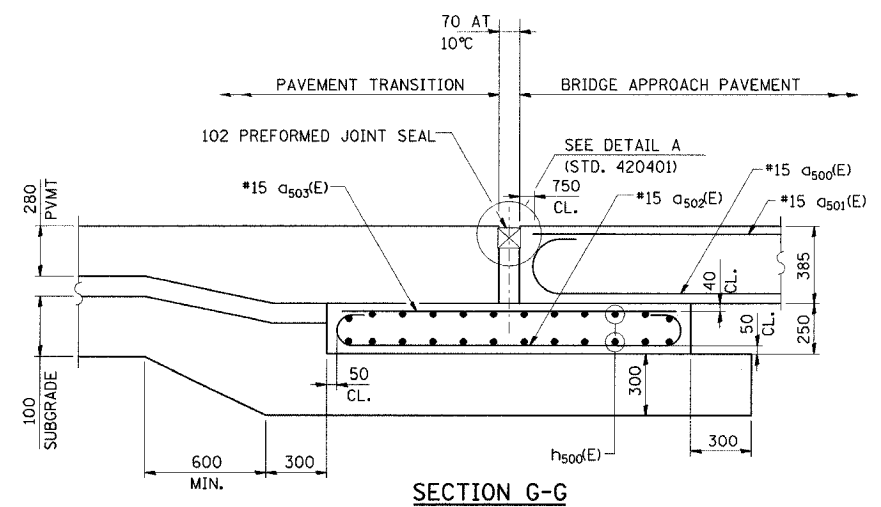
FBI RTE	SECTION	COUNTY	TOTAL SHEETS	SHEET NO.
80/94	0203.1B	COOK	200	155
STA.		TO STA.		
FED ROAD DIST. NO.		ILLINOIS FED. AID PROJECT		
CONTRACT NO. 62854				



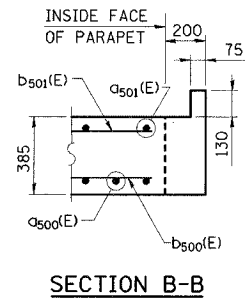
PLAN



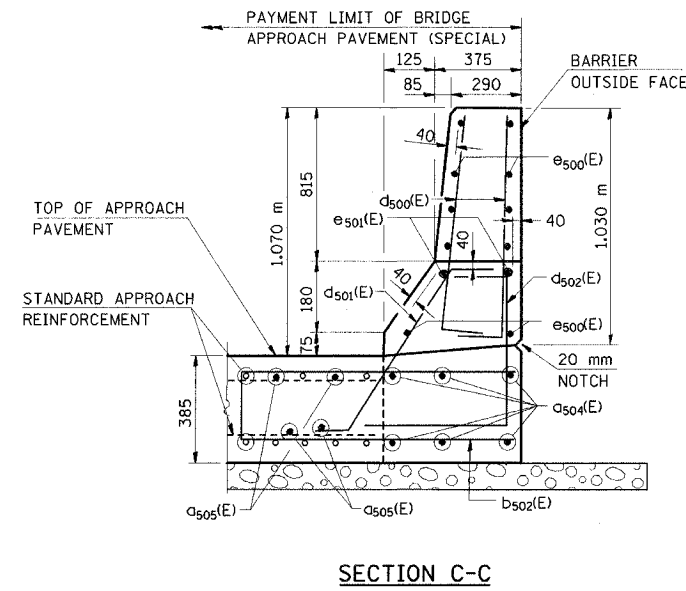
INSIDE PARAPET ELEVATION



SECTION G-G



SECTION B-B



SECTION C-C

BILL OF MATERIAL BRIDGE APPROACH PAVEMENT (SPECIAL)

BAR	NO.	SIZE	LENGTH (M)	SHAPE
a500(E)	61	#30	8.93	U
a501(E)	31	#15	8.90	—
a502(E)	33	#15	2.06	U
a503(E)	33	#15	1.70	—
a504(E)	6	#15	3.31	—
a505(E)	4	#30	9.63	U
b500(E)	31	#15	9.00	—
b501(E)	8	#15	9.00	—
b502(E)	12	#15	2.58	—
d500(E)	26	#15	1.10	—
d501(E)	13	#15	1.10	—
d502(E)	13	#15	0.80	—
e500(E)	10	#15	3.31	—
e501(E)	2	#25	3.31	—
h500(E)	24	#15	9.80	—
ITEM		UNIT	QUANTITY	
REINFORCEMENT BARS, EPOXY COATED (1)		KG	4979	
BRIDGE APPROACH PAVEMENT (SPECIAL)		M ²	85	

(1) INCLUDED FOR PAYMENT UNDER "BRIDGE APPROACH PAVEMENT (SPECIAL)"

NOTES:

1. WORK THIS SHEET WITH BRIDGE APPROACH PAVEMENT STANDARD 420401 AND PAVEMENT JOINTS STD. 420001.
2. REINFORCEMENT BARS DESIGNATED "(E)" SHALL BE EPOXY COATED.
3. FOR THE 9 m APPROACH PAVEMENT AND SUPPORTING PAD, ALL WORK AND MATERIALS ARE INCLUDED FOR PAYMENT UNDER "BRIDGE APPROACH PAVEMENT (SPECIAL)".
4. ALL DIMENSIONS ARE IN MILLIMETERS (mm) EXCEPT AS NOTED.
5. FOR CROSS SECTIONS ON BRIDGE APPROACH PAVEMENT (SPECIAL) AND BRIDGE APPROACH PAVEMENT TRANSITION, SEE ROADWAY PLANS.
6. PAYMENT FOR 13 mm P.J.F. and 50 mm P.J.F. AT PARAPET ENDS ARE INCLUDED WITH "BRIDGE APPROACH PAVEMENT (SPECIAL)".

REVISIONS	
NAME	DATE

ILLINOIS DEPARTMENT OF TRANSPORTATION
I-94/IL 394 SOUTH BOUND

**BRIDGE APPROACH PAVEMENT
WB I-80/94 TO SB IL 394 RAMP G
STRUCTURE NO. 016-2804
EAST APPROACH**

HORIZ SCALE:
VERT SCALE:
DATE: MARCH 23, 2005

DRAWN BY: LK
CHECKED BY: JJK

HNTB