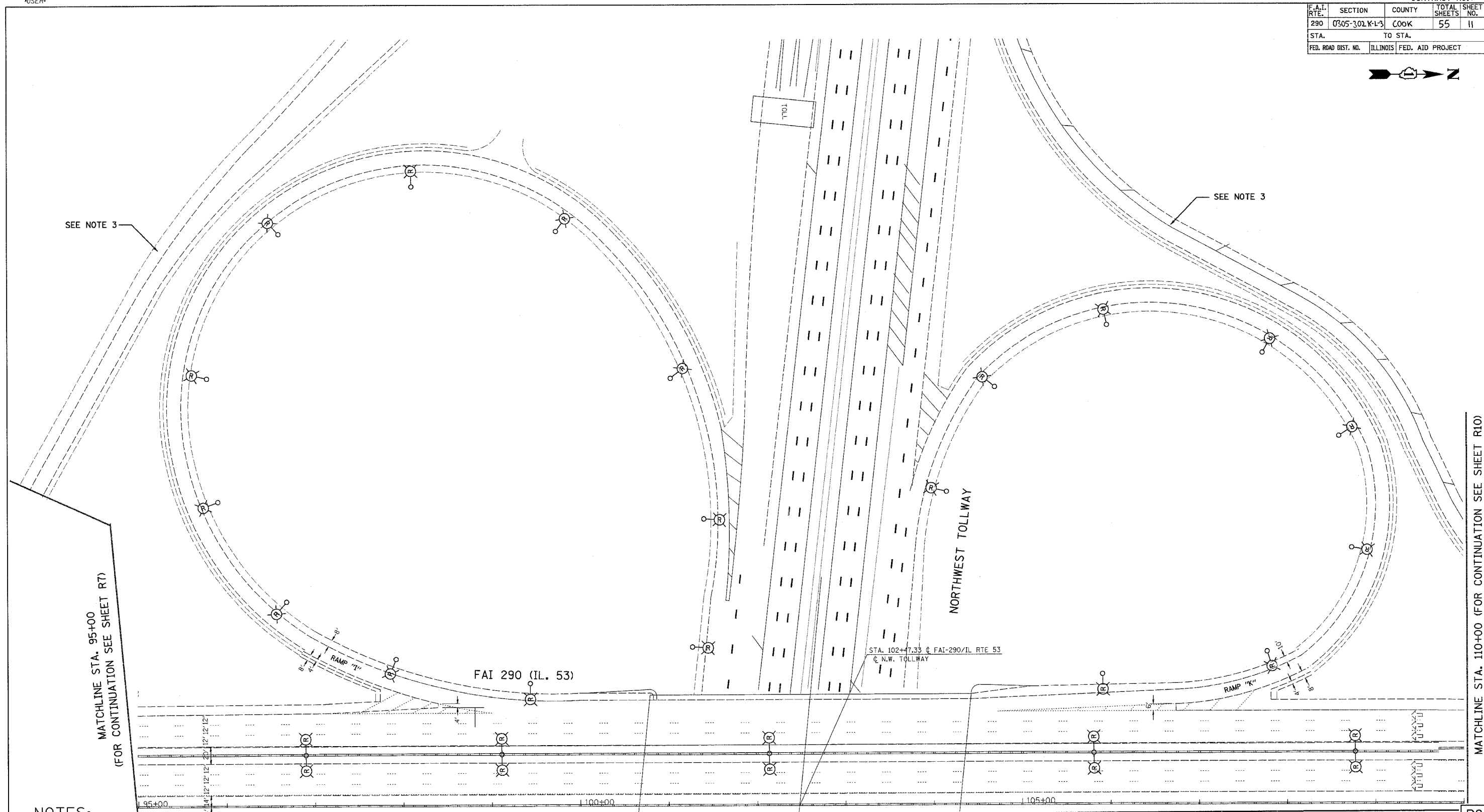
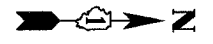


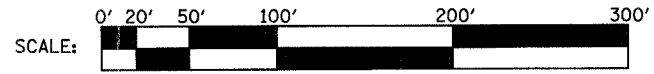
F.A.I. RTE.	SECTION	COUNTY	TOTAL SHEETS	SHEET NO.
290	0305-302 K-L-3	COOK	55	11
STA.	TO STA.			
FED. ROAD DIST. NO.	ILLINOIS FED. AID PROJECT			



NOTES:

1. CONTRACTOR TO VERIFY THAT EACH POLE BEING REMOVED IS CONNECTED TO AN IDOT CONTROLLER.
2. CONTRACTOR TO VERIFY EACH POLE REMOVAL WITH THE ENGINEER.
3. POLES LOCATED ON THE OUTER RAMPS OF THE TOLLWAY CLOVER LEAF SHALL REMAIN IN PLACE.
4. ALL POLES CONNECTED TO EXISTING CONTROLLER "P", SHALL BE REMOVED.
5. ALL POLES RESIDING SOUTH OF STATION 117+60 AND CONNECTED TO EXISTING CONTROLLER "R", SHALL BE REMOVED.
6. LIGHT POLE FOUNDATIONS LOCATED IN CONCRETE MEDIAN WALL TO REMAIN IN PLACE.

MATCHLINE (FOR CONTINUATION, SEE SHEET R9)



REVISIONS	
NAME	DATE

ILLINOIS DEPARTMENT OF TRANSPORTATION
LIGHTING REMOVAL PLAN
 ILLINOIS ROUTE 53
 WEST HALF OF I-90/
 I-53 INTERCHANGE
 SCALE: VERT. 1"=50'
 HORIZ. 1"=50'
 DATE 04-01-2005
 DRAWN BY WDF
 CHECKED BY RER

HOH HARRY O. HEFTER - ASSOCIATES, INC. 55 East Jackson Blvd.
 DESIGN AND CONSULTING ENGINEERS Chicago, IL 60604
 312/348-6131
 2672 0:\PROJECTS\0872\WORK\FINAL_04_01_05\SEGMENT 1\REMOVAL

DATE = 4/7/2005
 FILE NAME = #FILE#
 PLOT SCALE = #SCALE#
 REFERENCE = #REF#

MATCHLINE STA. 110+00 (FOR CONTINUATION SEE SHEET R10)

MATCHLINE STA. 95+00
 (FOR CONTINUATION SEE SHEET R7)