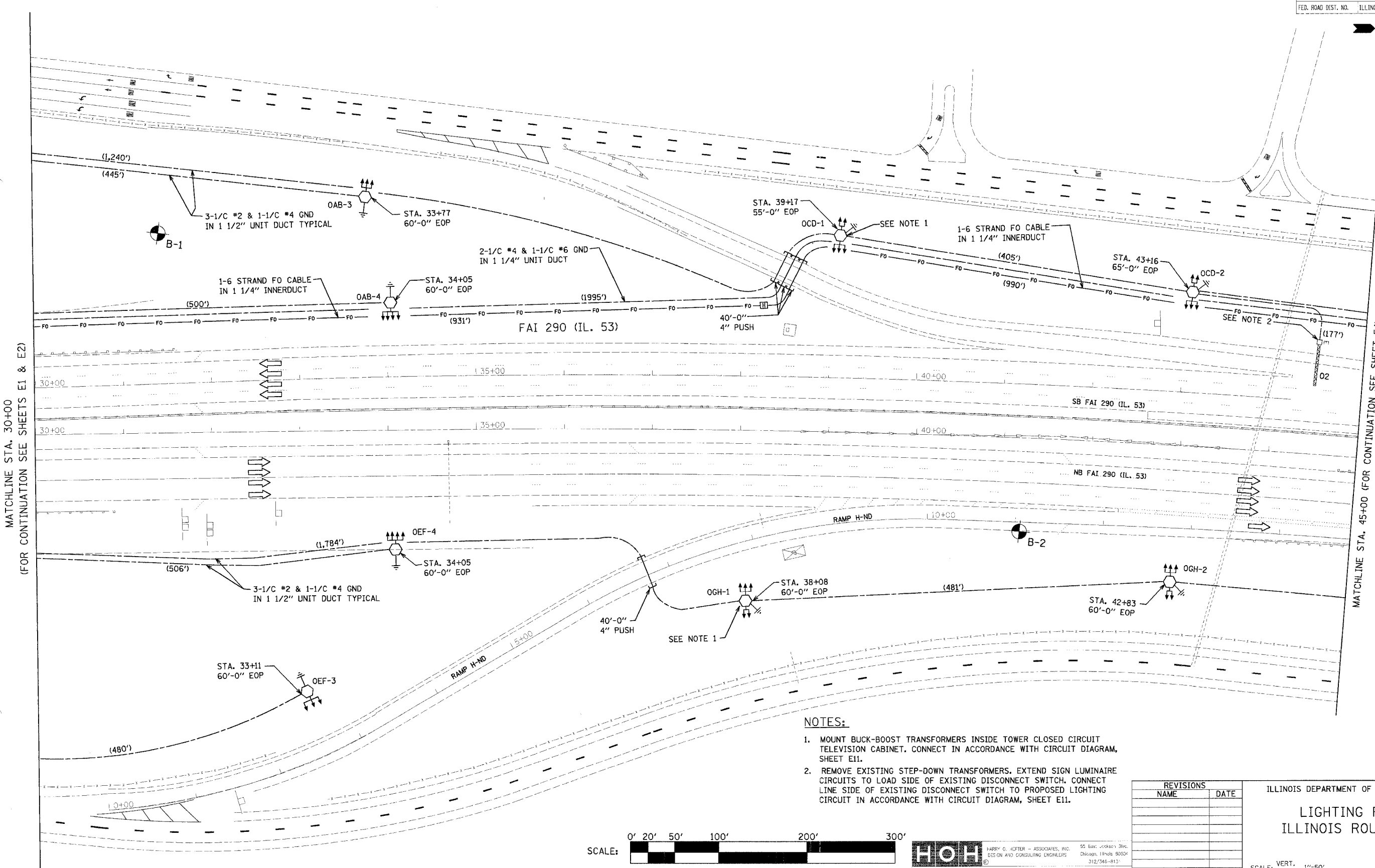


STATE	SECTION	COUNTY	TOTAL SHEETS
290	0305-302K-L3	COOK	55
NO.			16
STA. TO STA.		ILLINOIS FED. AID PROJECT	

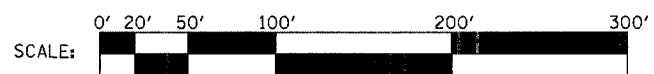


MATCHLINE STA. 30+00
(FOR CONTINUATION SEE SHEETS E1 & E2)

MATCHLINE STA. 45+00 (FOR CONTINUATION SEE SHEET E4)

NOTES:

1. MOUNT BUCK-BOOST TRANSFORMERS INSIDE TOWER CLOSED CIRCUIT TELEVISION CABINET. CONNECT IN ACCORDANCE WITH CIRCUIT DIAGRAM, SHEET E11.
2. REMOVE EXISTING STEP-DOWN TRANSFORMERS. EXTEND SIGN LUMINAIRE CIRCUITS TO LOAD SIDE OF EXISTING DISCONNECT SWITCH. CONNECT LINE SIDE OF EXISTING DISCONNECT SWITCH TO PROPOSED LIGHTING CIRCUIT IN ACCORDANCE WITH CIRCUIT DIAGRAM, SHEET E11.



HARRY O. HEFTLER - ASSOCIATES, INC.
 95 East Jackson Blvd.
 Chicago, Illinois 60604
 312/345-8113

REVISIONS	
NAME	DATE

ILLINOIS DEPARTMENT OF TRANSPORTATION

LIGHTING PLAN
ILLINOIS ROUTE 53

SCALE: VERT. 1"=50'
HORIZ. 1"=100'

DATE 02-28-2005

DRAWN BY MEK
CHECKED BY RER

E3

PLOT DATE = 04/05/2005
 FILE NAME = #FILE#
 PLOT SCALE = #SCALE#
 REFERENCE = #REF#