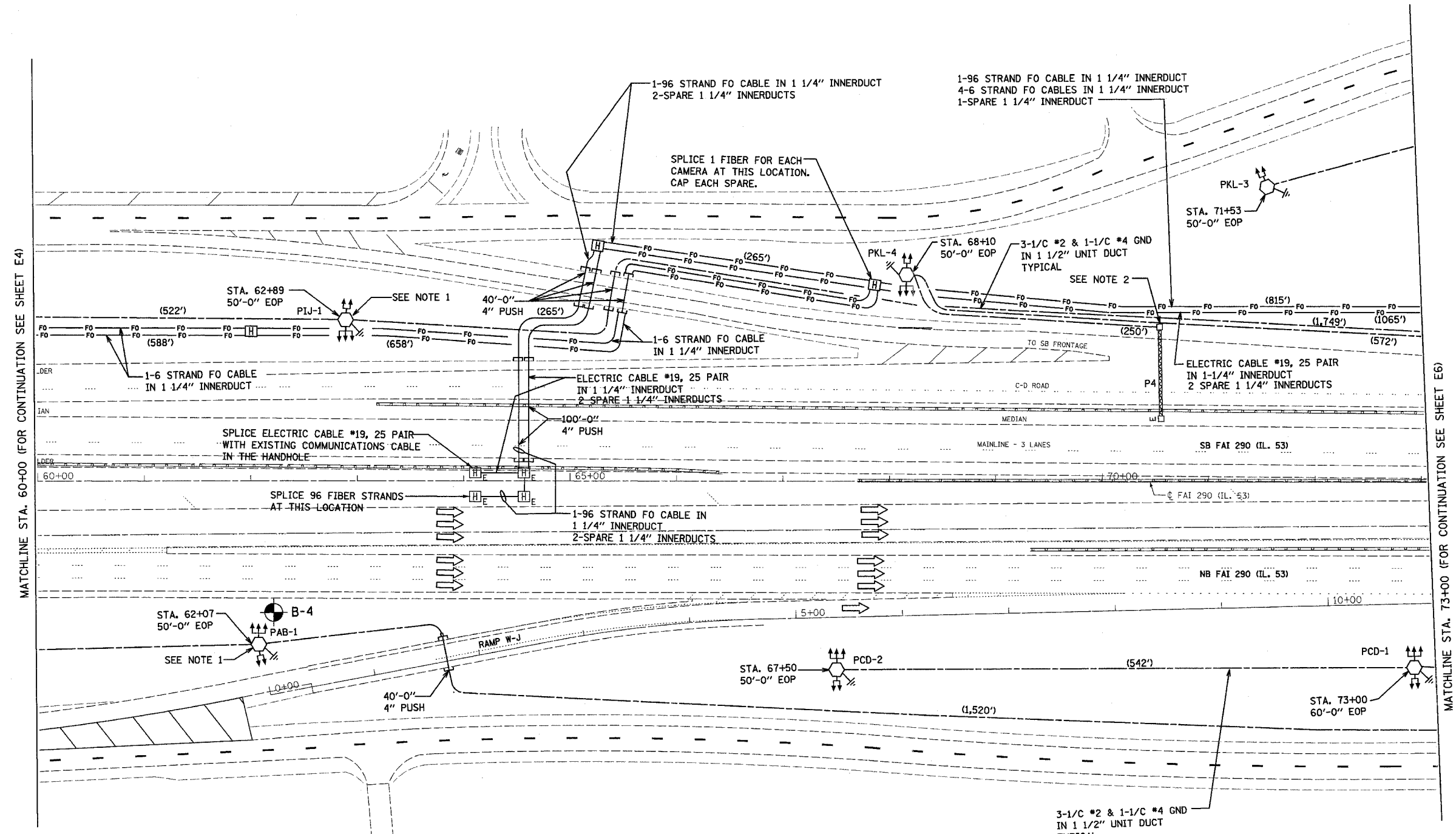


DATE-TIME
PROJECT
USER

CONTRACT NO. 62877

F.A.I. RTE.	SECTION	COUNTY	TOTAL SHEETS	SHEET NO.
290	0305-302K-L-3	COOK		13
STA. TO STA.		FED. ROAD DIST. NO. ILLINOIS FED. AID PROJECT		

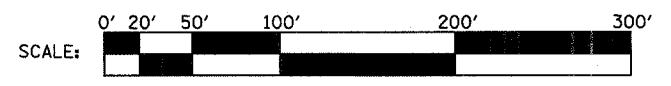


MATCHLINE STA. 60+00 (FOR CONTINUATION SEE SHEET E4)

MATCHLINE STA. 73+00 (FOR CONTINUATION SEE SHEET E6)

NOTES:

1. MOUNT BUCK-BOOST TRANSFORMERS INSIDE TOWER CLOSED CIRCUIT TELEVISION CABINET. CONNECT IN ACCORDANCE WITH CIRCUIT DIAGRAM, SHEET E11.
2. REMOVE EXISTING STEP-DOWN TRANSFORMERS. EXTEND SIGN LUMINAIRE CIRCUITS TO LOAD SIDE OF EXISTING DISCONNECT SWITCH. CONNECT LINE SIDE OF EXISTING DISCONNECT SWITCH TO PROPOSED LIGHTING CIRCUIT IN ACCORDANCE WITH CIRCUIT DIAGRAM, SHEET E12.



REVISIONS	
NAME	DATE

ILLINOIS DEPARTMENT OF TRANSPORTATION
LIGHTING PLAN
ILLINOIS ROUTE 53

SCALE: VERT. 1"=50'
 HORIZ. DATE 02-28-2005

DRAWN BY MEK
 CHECKED BY RER

PLOT DATE = 04/29/2005
 FILE NAME = FILE16
 PLOT SCALE = SCALE8
 REFERENCE = REF9

HOH
 HARRY O. HEFTER - ASSOCIATES, INC.
 DESIGN AND CONSULTING ENGINEERS
 55 East Jackson Blvd.
 Chicago, Illinois 60604
 312.246.8131

2672

PROJECTS\2672\DOCS\FINAL_04_01_05\SEGMENT 1\LIGHTING

E5