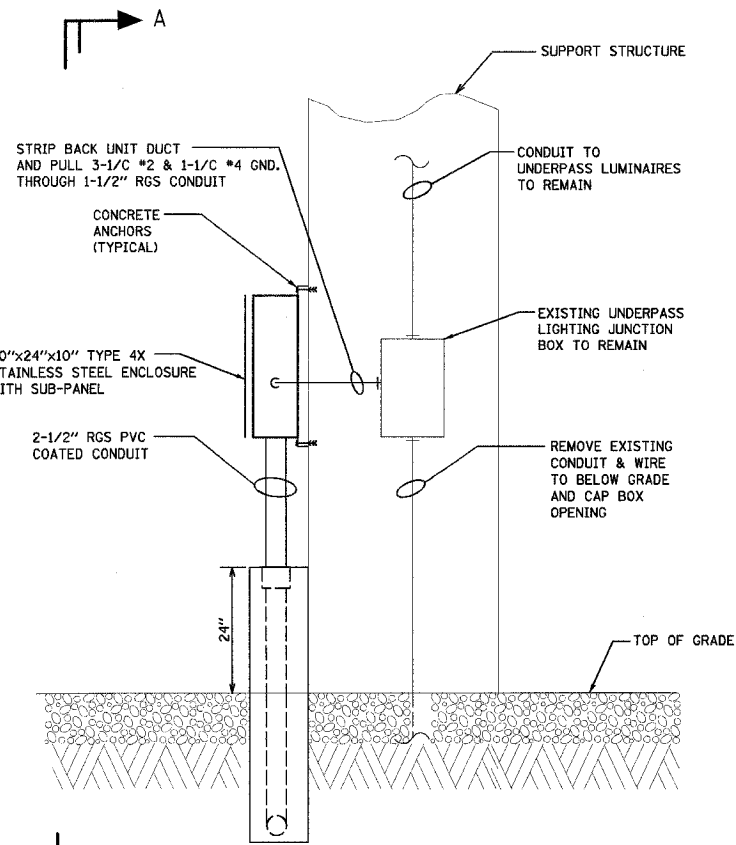
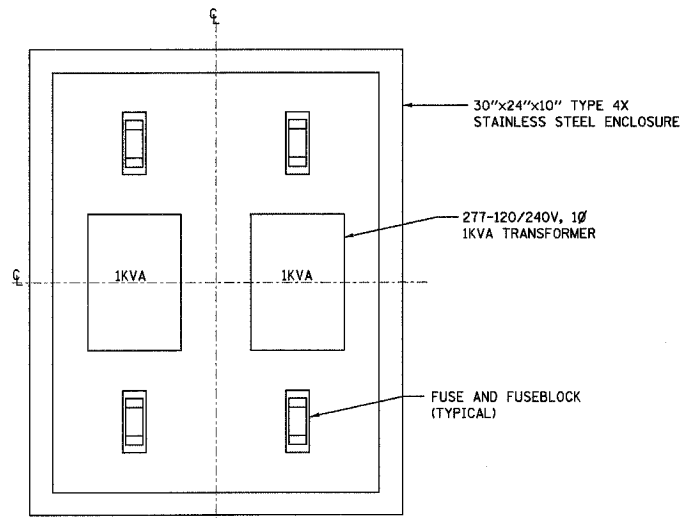


62877

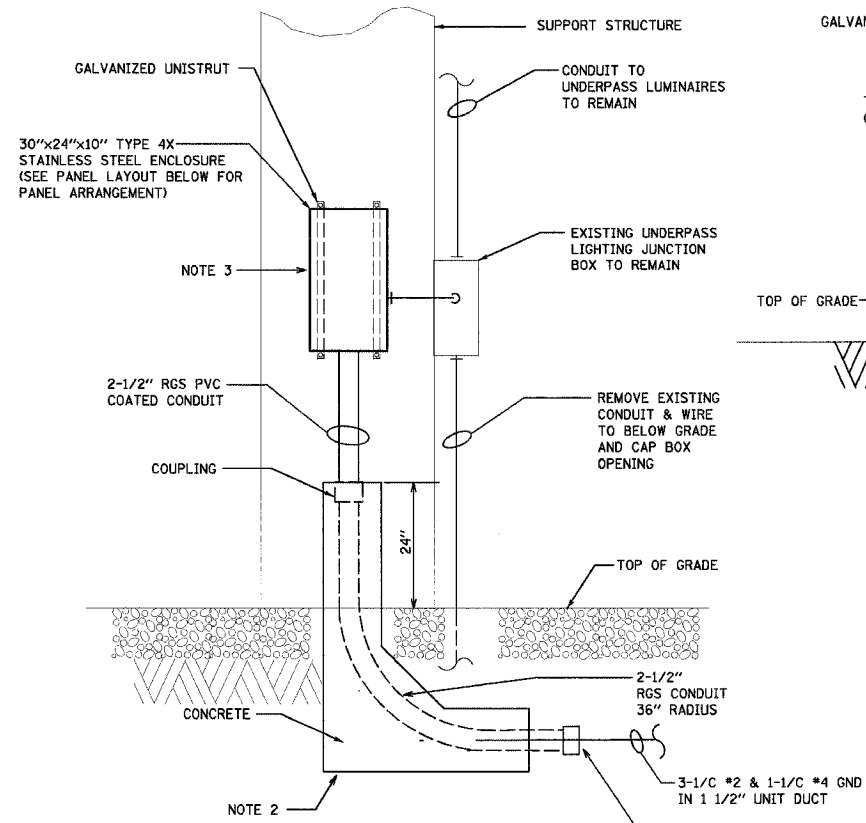
F.A. RTE.	SECTION	COUNTY	TOTAL SHEETS	SHEET NO.
290	0305-302K-L-3	COOK	55	29
STA.	TO STA.			
FED. ROAD DIST. NO. ILLINOIS FED. AID PROJECT				



DETAIL NO.1
PULLBOX AND TRANSFORMER MOUNTING AT GOLF RD. DWG. E6
SCALE: NONE



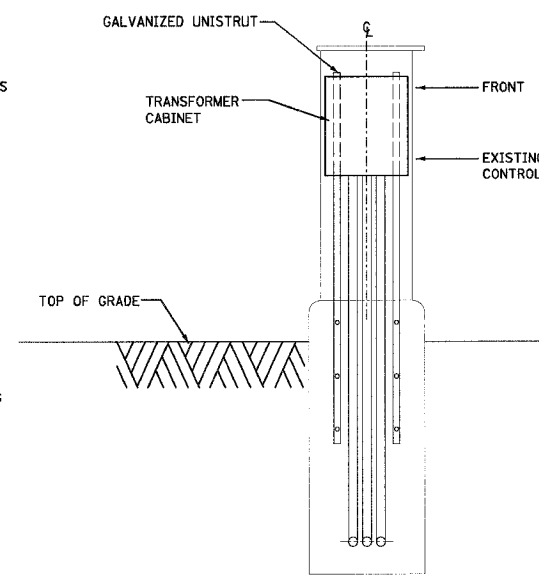
PANEL LAYOUT FOR DETAIL No.1
SCALE: NONE



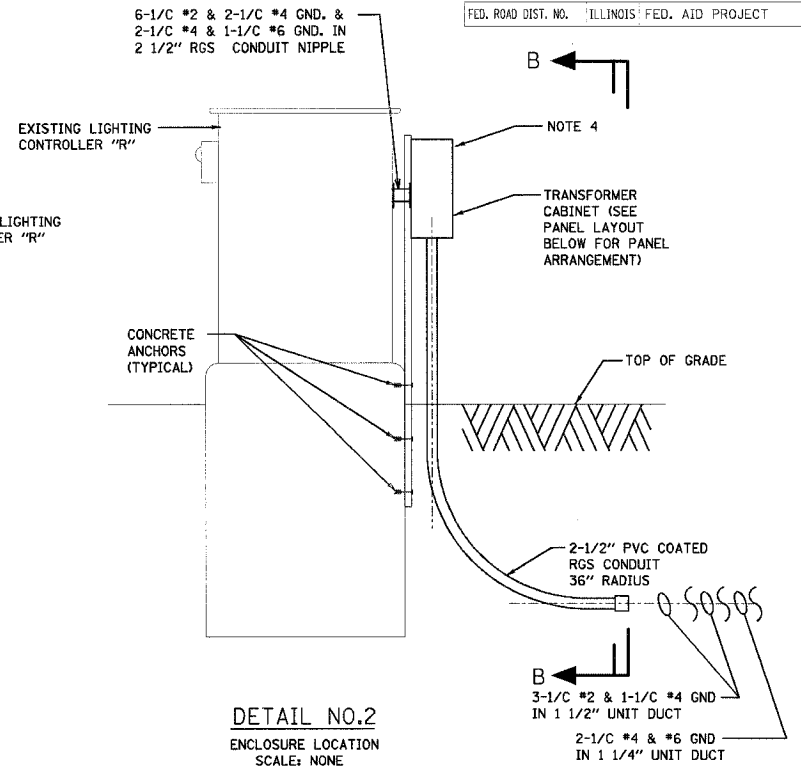
SECTION A-A
SCALE: NONE

NOTES:

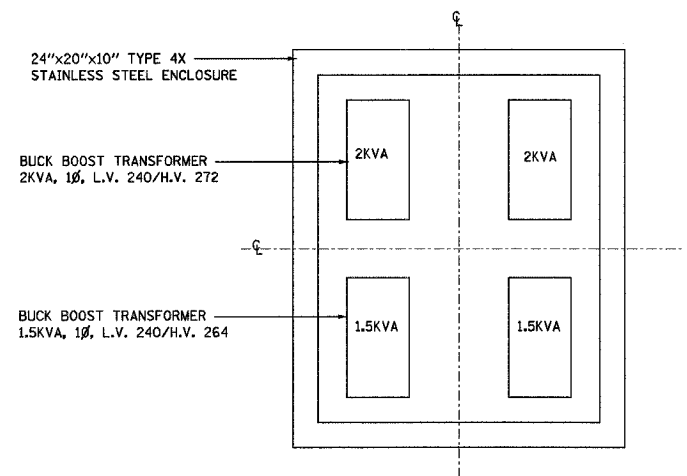
1. PROVIDE WATERTIGHT HUBS FOR ENTRY INTO CONTROLLER ENCLOSURE. (INCLUDED UNDER MODIFY EXISTING CONTROLLER, SPECIAL)
2. CONCRETE, RGS CONDUIT, COUPLING AND ALL ASSOCIATED MATERIAL AND LABOR REQUIRED FOR A COMPLETE INSTALLATION, SHALL BE INCLUDED AS PART OF PAY ITEM, MODIFY EXISTING UNDERPASS LIGHTING-GOLF RD.
3. STAINLESS STEEL ENCLOSURE, 2 1/2" RGS PVC COATED CONDUIT, UNISTRUT, CONCRETE ANCHORS AND ALL ASSOCIATED MATERIAL AND LABOR REQUIRED FOR A COMPLETE INSTALLATION, SHALL BE INCLUDED AS PART OF PAY ITEM, MODIFY EXISTING UNDERPASS LIGHTING-GOLF RD.
4. ENCLOSURE, UNISTRUT, CONCRETE ANCHORS AND ASSOCIATED MATERIAL AND LABOR REQUIRED FOR A COMPLETE INSTALLATION, SHALL BE INCLUDED AS PART OF PAY ITEM, MODIFY EXISTING CONTROLLER, SPECIAL.



SECTION B-B
SCALE: NONE



DETAIL NO.2
ENCLOSURE LOCATION
SCALE: NONE



PANEL LAYOUT FOR DETAIL No.2
SCALE: NONE

E-16

REVISIONS	
NAME	DATE

ILLINOIS DEPARTMENT OF TRANSPORTATION
**ILLINOIS ROUTE 53
PROPOSED LIGHTING PLAN
SECTION AND DETAILS**

SCALE: VERT. NONE
HORIZ. DATE 2-28-2005

DRAWN BY MEK
CHECKED BY PBL

HOH
HARRY O. HOFFER - ASSOCIATES, INC. 85 First Jackson Blvd
DESIGN AND CONSULTING ENGINEERS Chicago, Illinois 60604
312/546-8131

2672