

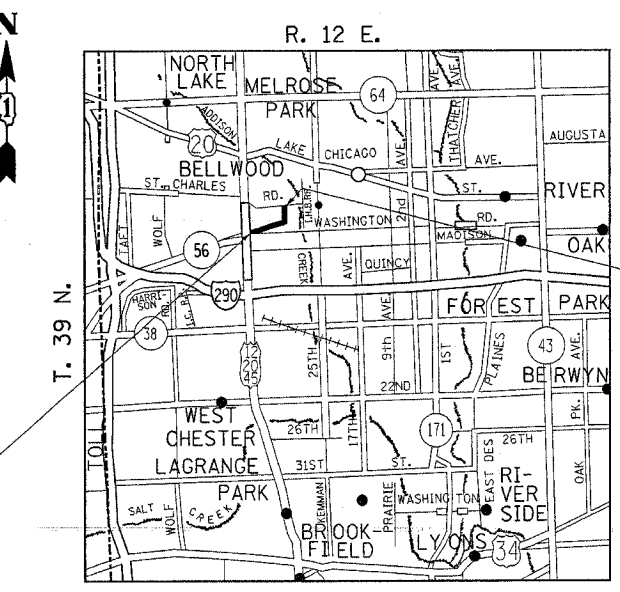
FAU	SECTION	COUNTY	TOTAL SHEETS	SHEET NO.
3545	0303.1 RS	COOK	15	1
			+1	
			= 16 Total Sheets	

STATE OF ILLINOIS  
DEPARTMENT OF TRANSPORTATION  
DIVISION OF HIGHWAYS  
**PLANS FOR PROPOSED  
HIGHWAY**

**FAU ROUTE 3545 - (BUTTERFIELD RD)  
SECTION: 0303.1 RS  
US 12/20/45 TO ST. CHARLES RD  
RESURFACING (MAINTENANCE)  
COOK COUNTY  
C-91-151-05**

FOR INDEX OF SHEETS, SEE SHEET NO. 2

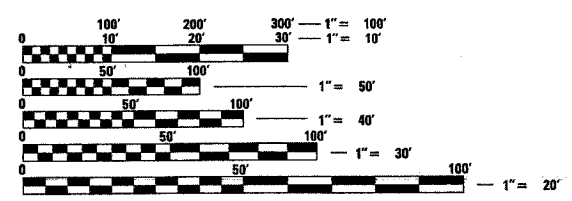
THE IMPROVEMENT IS LOCATED IN THE VILLAGE OF BELLWOOD



IMPROVEMENT ENDS  
STATION 46+54

IMPROVEMENT BEGINS  
STATION 13+57

**TRAFFIC DATA**  
2002 ADT = 2200  
POSTED SPEED LIMIT = 30 MPH



FULL SIZE PLANS HAVE BEEN PREPARED USING STANDARD ENGINEERING SCALES. REDUCED SIZED PLANS WILL NOT CONFORM TO STANDARD SCALES. IN MAKING MEASUREMENTS ON REDUCED PLANS, THE ABOVE SCALES MAY BE USED.

J.U.L.I.E.  
JOINT UTILITY LOCATION INFORMATION FOR EXCAVATION  
1-800-892-0123

**CONTRACT NO. 62920**

GROSS LENGTH OF IMPROVEMENT = 3297 LINEAL FEET = 0.624 MILE  
NET LENGTH OF IMPROVEMENT = 3297 LINEAL FEET = 0.624 MILE

STATE OF ILLINOIS  
DEPARTMENT OF TRANSPORTATION  
DIVISION OF HIGHWAYS

SUBMITTED March 30, 20 05

Dina O'Keefe, PE  
DEPUTY DIRECTOR OF HIGHWAYS, REGION ENGINEER

May 13, 2005  
Mike Nene, PE  
ENGINEER OF DESIGN AND ENVIRONMENT

May 13, 2005  
Victor Moders, PE  
DIRECTOR OF HIGHWAYS, CHIEF ENGINEER

**PRINTED BY THE AUTHORITY  
OF THE STATE OF ILLINOIS**

DISTRICT ONE DESIGN PLAN PREPARATION ENGINEER:  
KEN ENG/ISSAM RAYAN (847)705-4247