

**INDEX OF SHEETS**

FOR INDEX OF SHEETS, SEE SHEET NO. 2

PROJECT LOCATED IN THE CITY OF CHICAGO

DAN RYAN EXPRESSWAY:	ADT (2020)	DESIGN SPEED	POSTED SPEED
SB I-94 (DAN RYAN)	140,500	60 MPH	55 MPH
SB I-57	69,390	60 MPH	55 MPH
SB 71ST STREET C-D ENTRANCE RAMP	9,145	45 MPH	40 MPH
SB 75TH STREET C-D EXIT RAMP	7,985	45 MPH	40 MPH
SB 76TH STREET C-D ENTRANCE RAMP	7,940	45 MPH	40 MPH
SB 79TH STREET C-D EXIT RAMP	7,205	45 MPH	40 MPH
SB 87TH STREET EXIT RAMP	12,590	45 MPH	40 MPH
SB 87TH STREET ENTRANCE RAMP	13,350	45 MPH	40 MPH
SB 95TH STREET EXIT RAMP	11,900	45 MPH	40 MPH
SB WENTWORTH AVE. EXIT RAMP	4,770	45 MPH	40 MPH
SB HALSTED STREET EXIT RAMP	21,310	45 MPH	40 MPH

**STATE OF ILLINOIS  
DEPARTMENT OF TRANSPORTATION  
DIVISION OF HIGHWAYS**

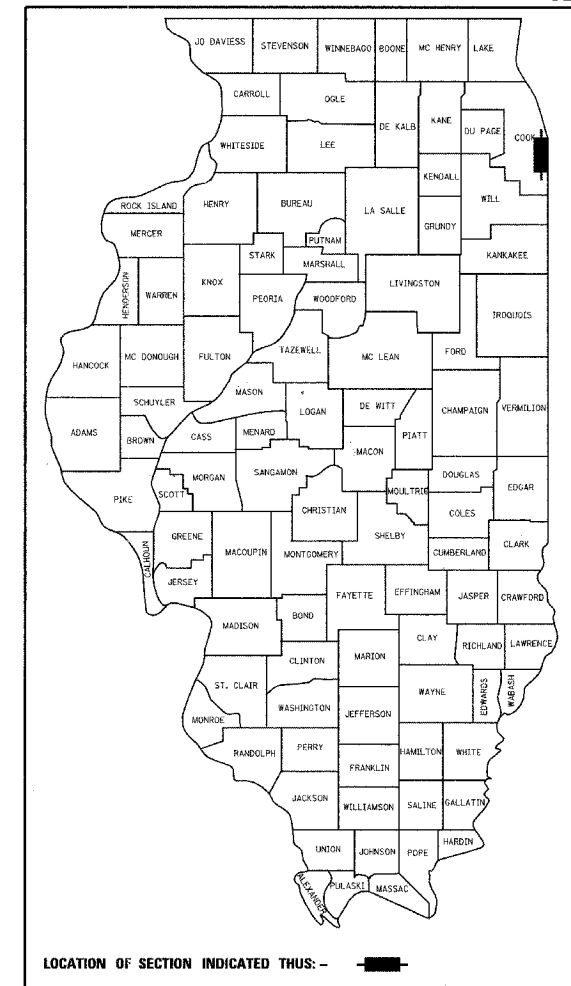
**PROPOSED HIGHWAY PLANS**

**F.A.I. ROUTE 94 (DAN RYAN EXPRESSWAY)  
SECTION (1516.1, 1717 & 1818) I-2  
71ST STREET TO I-57 (SB RAMPS, C-D'S, AND RETAINING WALLS)  
FENCING ON SB RETAINING WALLS**



**COOK COUNTY  
C-91-167-05  
R. 14 E.**

F.A.I. RTE.	SECTION	COUNTY	TOTAL SHEETS	SHEET NO.
94	*	COOK	36	1
FED. ROAD DIST. NO.		ILLINOIS FED. AID PROJECT		
D-91-421-01 • (1516.1, 1717 & 1818) I-2 62931				



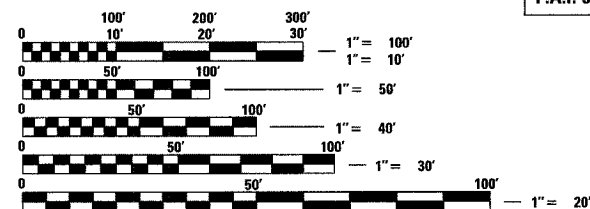
**STATE OF ILLINOIS  
DEPARTMENT OF TRANSPORTATION  
DIVISION OF HIGHWAYS**

SUBMITTED April 8, 2005  
Dina O'Keefe/AP DISTRICT ENGINEER

May 13, 2005  
Mike Nunez/ID ENGINEER OF DESIGN AND ENVIRONMENT

May 13, 2005  
Victor Maden/ID DIRECTOR, DIVISION OF HIGHWAYS

**CONTRACT 17J**



FULL SIZE PLANS HAVE BEEN PREPARED USING STANDARD ENGINEERING SCALES; REDUCED SIZED PLANS WILL NOT CONFORM TO STANDARD SCALES. IN MAKING MEASUREMENTS ON REDUCED PLANS, THE ABOVE SCALES MAY BE USED

DIGGER:  
CHICAGO UTILITY ALERT NETWORK  
(312) 744-7000

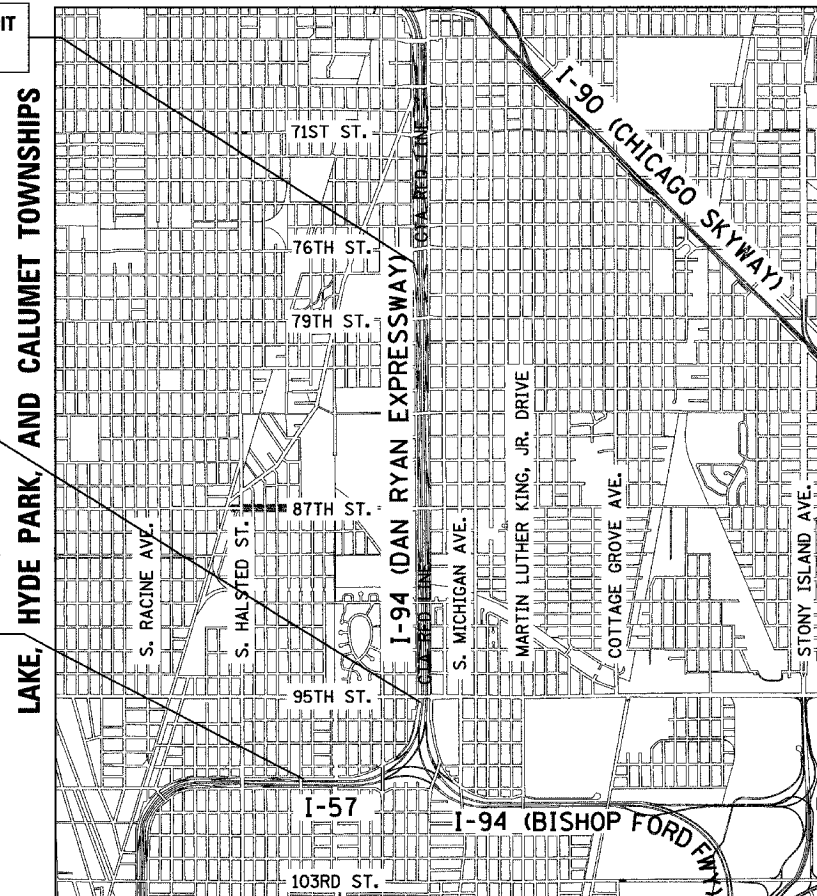
CTA CONTACT:  
MARVIN A. WATSON,  
GENERAL MANAGER, CONSTRUCTION  
(312) 681-3860

**CONTRACT NO. 62931**

F.A.I. 94 (RYAN) PROJECT LIMIT  
STA. 1329 + 61.69 (SB I-94)

F.A.I. 94 (RYAN) STA. 1204 + 63.94 =  
F.A.I. 57 STA. 155 + 37.15

F.A.I. 57 PROJECT LIMIT  
STA. 107 + 16.17 (SB I-57)



**LOCATION MAP**

0 1/2 MILE 1 MILE  
MAP SCALE: 1" = 1/2 MILE  
GROSS LENGTH OF PROJECT = 17,318.73 FT. = 3.280 MI.  
NET LENGTH OF PROJECT = 17,318.73 FT. = 3.280 MI.



Signed Dean A. Kiesel  
Dean A. Kiesel, P.E., Ill. Lic. No. 32957  
Expires 11-30-2005.  
Date APRIL 11, 2005

**TYLIN INTERNATIONAL**

Rev. 5-26-05 PRINTED BY THE AUTHORITY OF THE STATE OF ILLINOIS

DISTRICT ONE DESIGN / PROJECT MANAGER:  
BRIAN KUTTAB (847) 705 - 4431