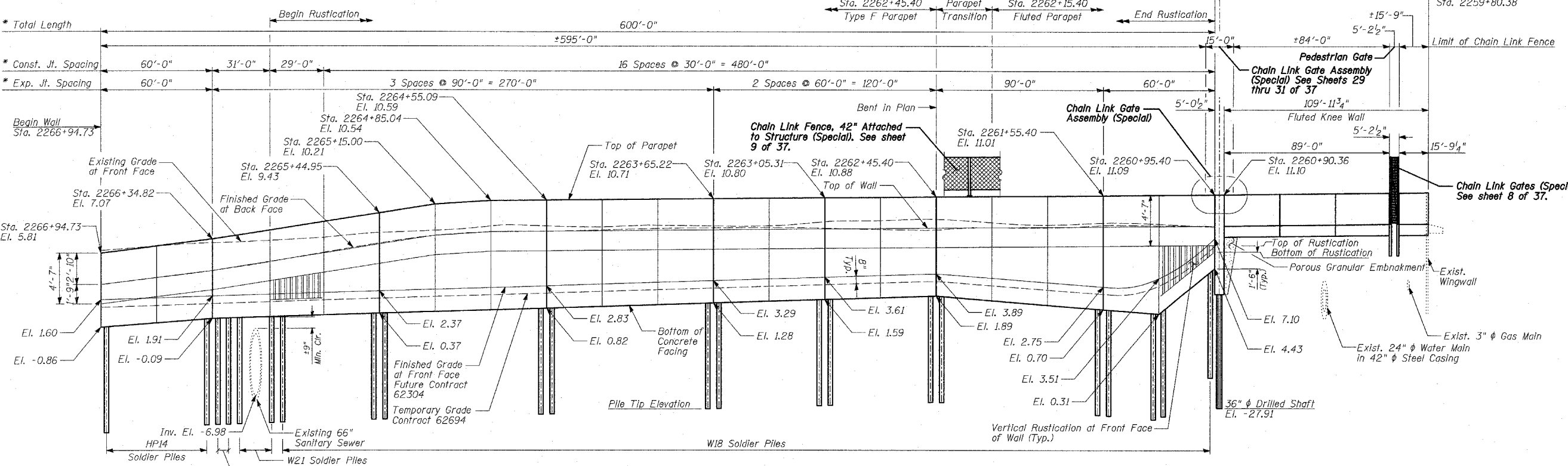


Benchmarks: BM 3553 Set "+" northwest bolt of traffic signal/light base at northeast intersection of 87th St. and State St. El. 8.47

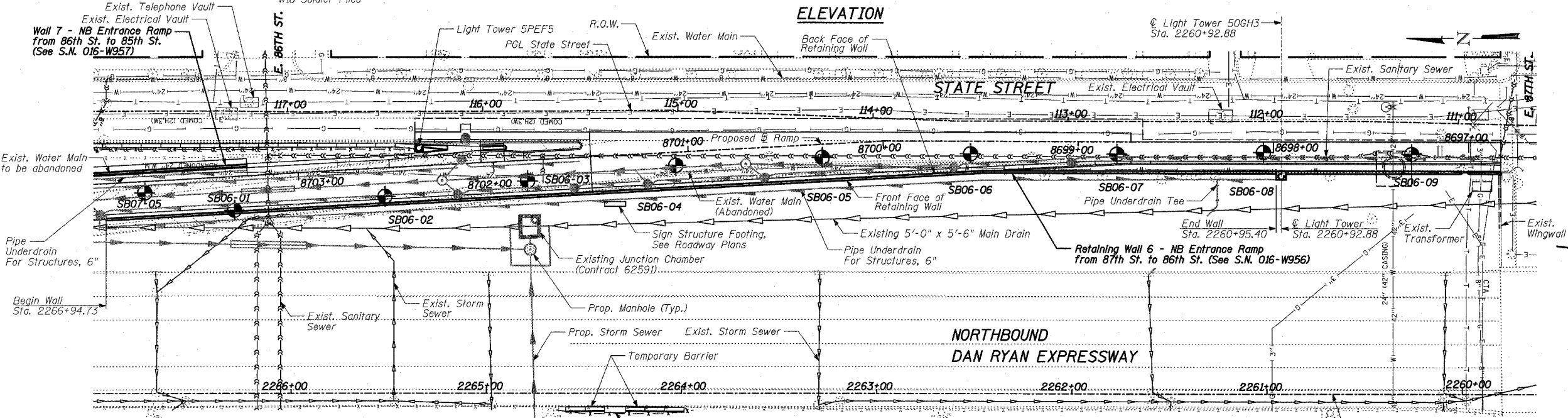
Existing Structure: None.

F.A.I. RTE.	SECTION	COUNTY	TOTAL SHEETS	SHEET NO.
94		COOK	37	7
STA. 2210+00.00 TO STA. 2356+00.00				
FED. ROAD DIST. NO. ILLINOIS FED. AID PROJECT				
• (1516.1, 1717 & 1818) I-3				
62932				



DESIGN SPECIFICATION
AASHTO 2002 Standard Specifications for Highway Bridges

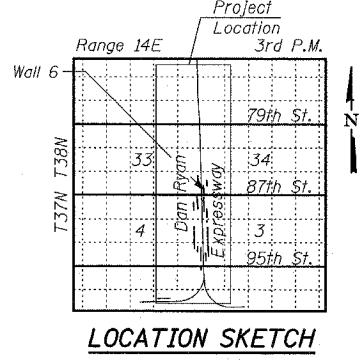
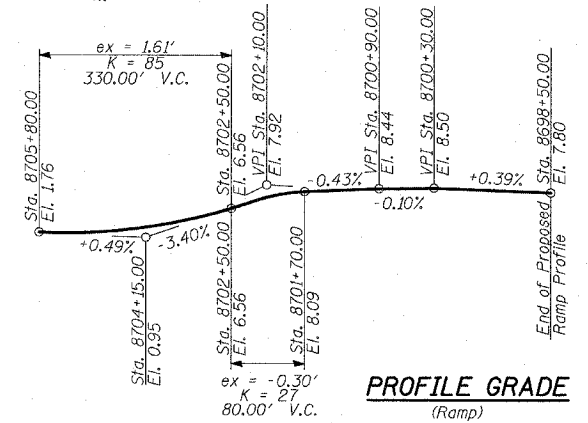
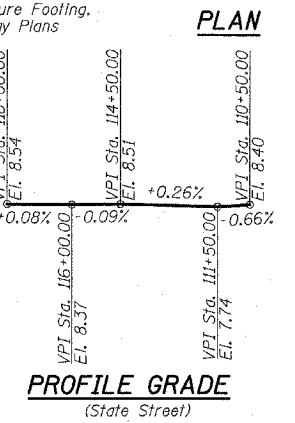
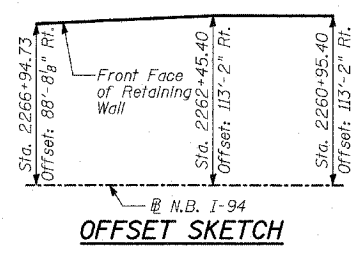
DESIGN STRESSES
FIELD UNITS
f'c = 3,500 psi
fy = 60,000 psi (Reinforcement)
fy = 36,000 psi (M270 Grade 36) Solder Piles



PROFILE GRADE
(N.B. I-94)
VPI Sta. 2258+25.00
El. -11.45

LEGEND
● Boring Location
* Measured along Front Face of Wall.

TYLIN INTERNATIONAL



REVISIONS	
NAME	DATE

ILLINOIS DEPARTMENT OF TRANSPORTATION
F.A.I. 94 (DAN RYAN EXPRESSWAY)
RETAINING WALL ALONG STATE ST.
ENTRANCE RAMP FROM 87TH ST. TO 86TH ST.
WALL 6 - GENERAL PLAN
STA. 2266+94.73 TO STA. 2260+95.40
S.N. 016-W956
SCALE: N.T.S.
DATE: APRIL 15, 2005

DESIGNED BY: MI, MAF
DRAWN BY: MAF, DJR
CHECKED BY: TD, MI

04/13/2005 07:28:26 AM