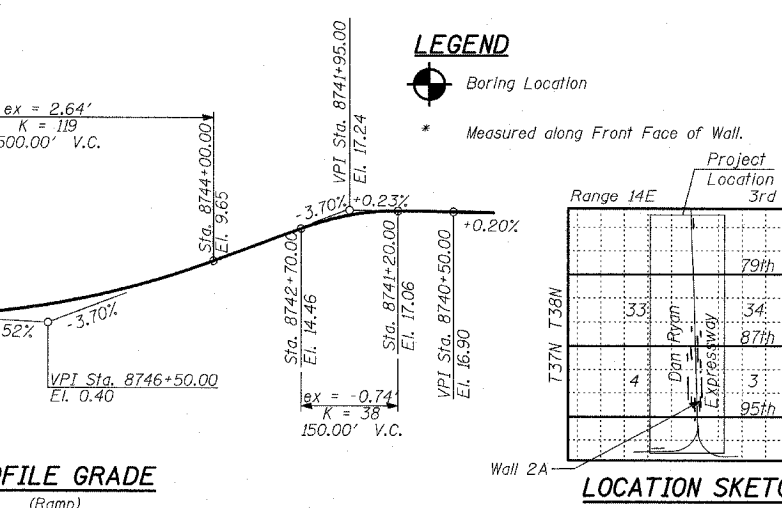
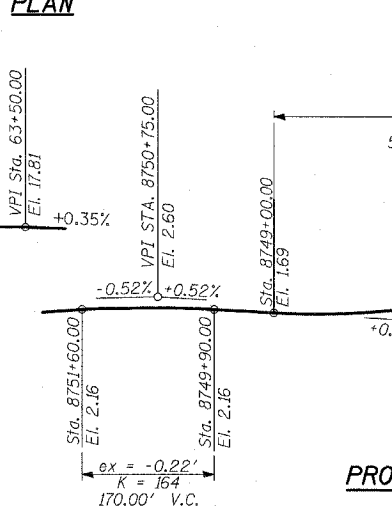
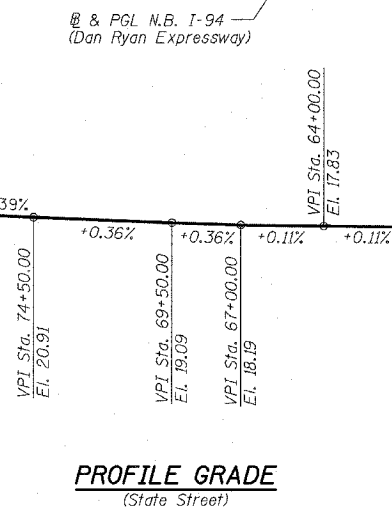
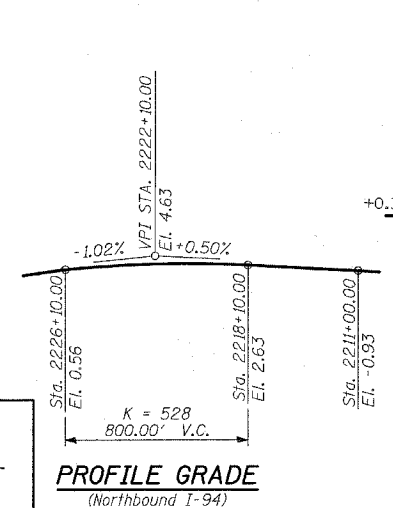
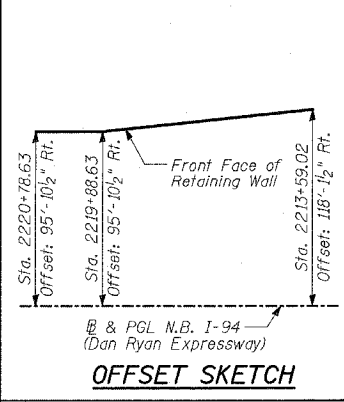
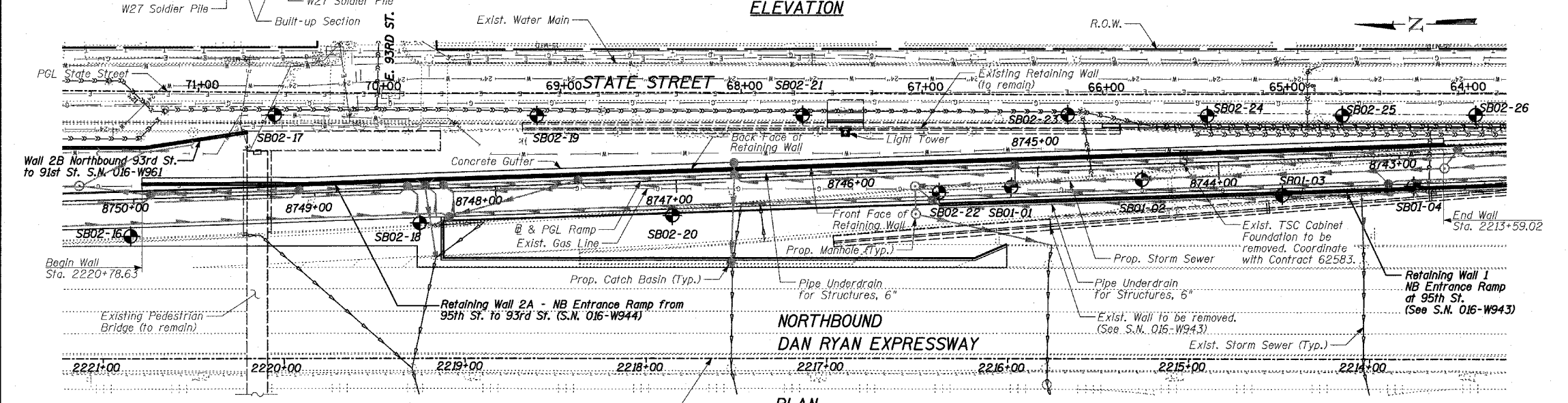
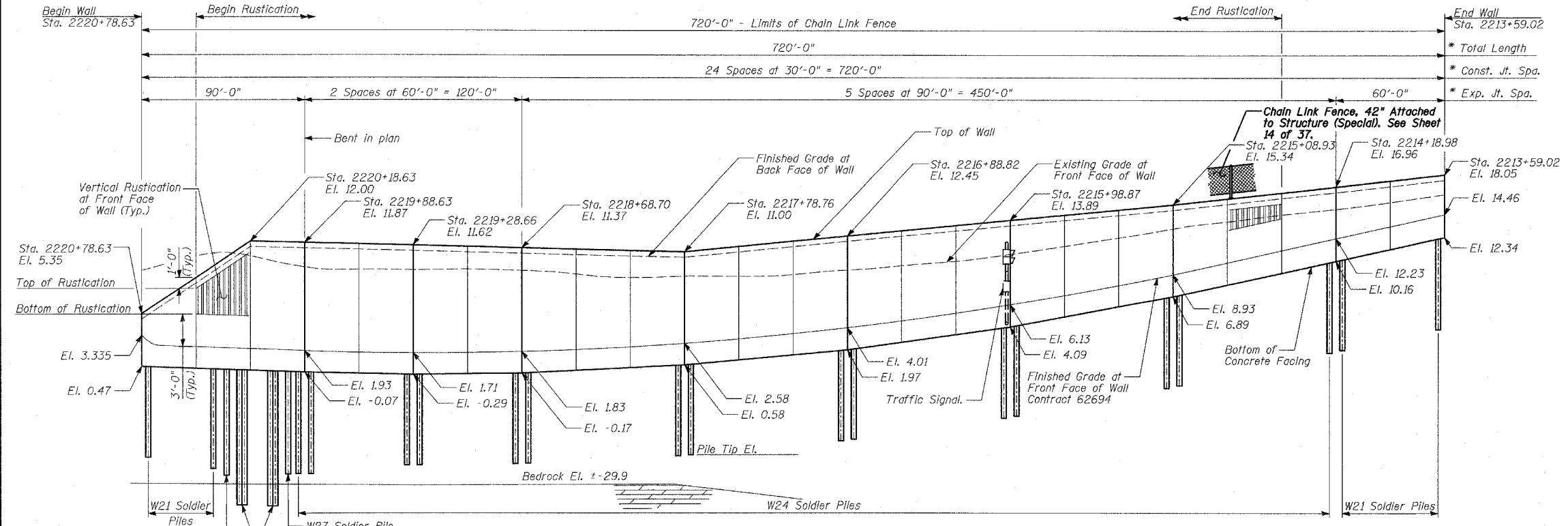


Benchmarks: BM 3522 Set "+" on south southeast flange bolt of hydrant ± halfway between north and south entrance to City, east side of State St. and north of 95th St. El. 18.06

Existing Structure: None

F.A.I. RTE.	SECTION	COUNTY	TOTAL SHEETS	SHEET NO.
94	*	COOK	37	10
STA. 2210+00.00 TO STA. 2356+00.00				
FED. ROAD DIST. NO. ILLINOIS FED. AID PROJECT				
* (1516.1, 1717 & 1818) I-3			62932	



TYLIN INTERNATIONAL

**DESIGN STRESSES**

**FIELD UNITS**  
 f'c = 3,500 psi  
 fy = 60,000 psi (Reinforcement)  
 fy = 36,000 psi (M270 Grade 36) Soldier Piles

**DESIGN SPECIFICATION**

AASHTO 2002 Standard Specifications for Highway Bridges

REVISIONS	
NAME	DATE

ILLINOIS DEPARTMENT OF TRANSPORTATION  
**F.A.I. 94 (DAN RYAN EXPRESSWAY)**  
**RETAINING WALL ALONG STATE ST.**  
**ENTRANCE RAMP FROM 95TH ST. TO 93RD ST.**  
**WALL 2A - GENERAL PLAN**  
 STA. 2220+78.63 TO STA. 2213+59.02  
 S.N. 016-W944  
 SCALE: N.T.S.  
 DATE: APRIL 15, 2005

DESIGNED BY: MI, DJR  
 DRAWN BY: DJR, MAF  
 CHECKED BY: TD, MI

PA:02373; road; civil; bridge; 11/11/05; 3:30; 94-9944.dgn  
 04/15/2005 07:29:40 AM