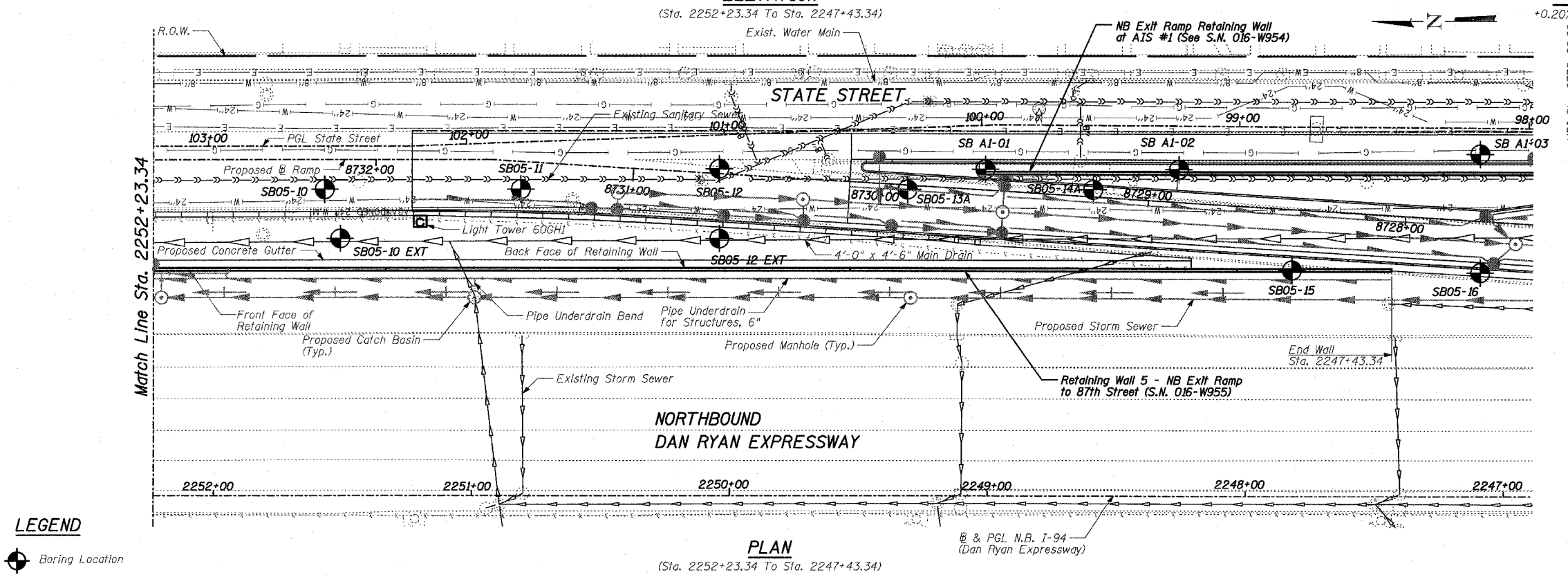
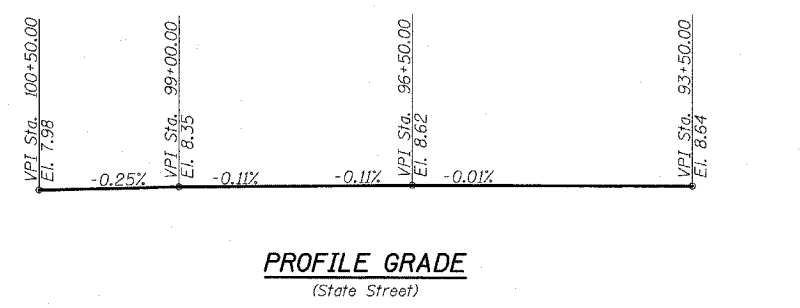
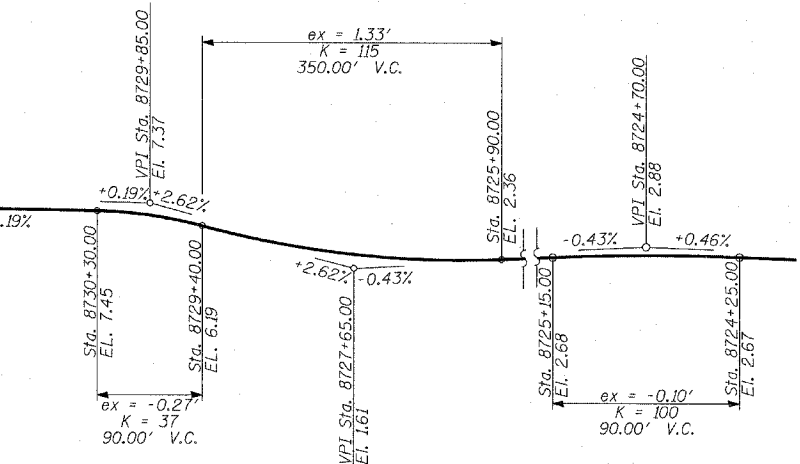
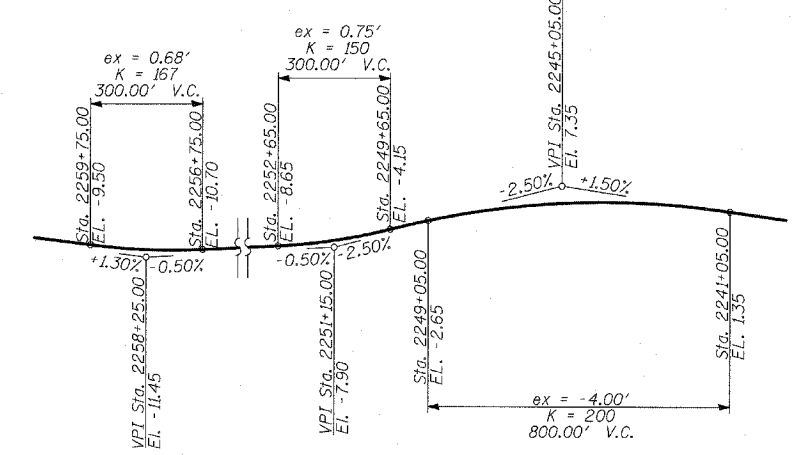
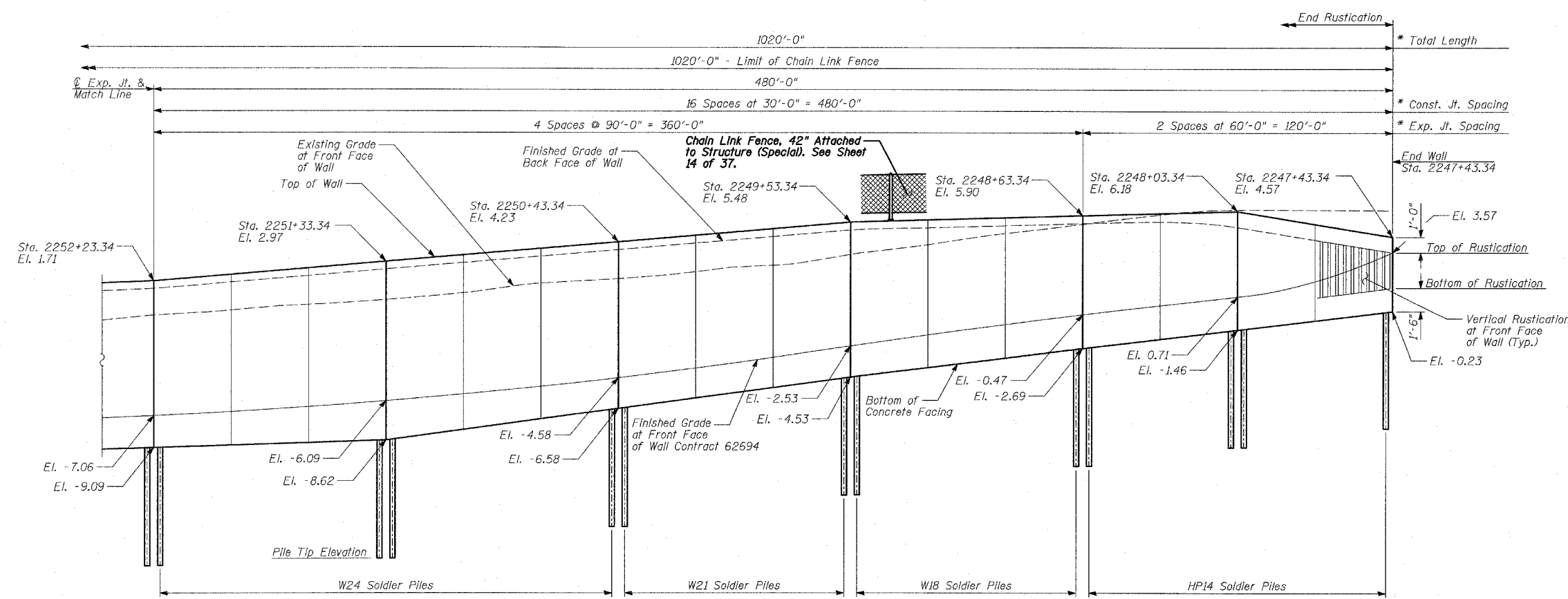


F.A.I. RTE.	SECTION	COUNTY	TOTAL SHEETS	SHEET NO.
94	*	COOK	37	12
STA. 2210+00.00 TO STA. 2356+00.00				
FED. ROAD DIST. NO.		ILLINOIS FED. AID PROJECT		62932
(1516.1, 1717 & 1818) I-3				



LEGEND

⊕ Boring Location

* Measured along Front Face of Wall.

TYLIN INTERNATIONAL

REVISIONS	
NAME	DATE

ILLINOIS DEPARTMENT OF TRANSPORTATION
F.A.I. 94 (DAN RYAN EXPRESSWAY)
RETAINING WALL ALONG STATE ST.
EXIT RAMP TO 87TH ST.
WALL 5 - GENERAL PLAN
STA. 2257+63.34 TO STA. 2247+43.34
S.N. 016-W955
SCALE: N.T.S.
DATE: APRIL 15, 2005

DESIGNED BY: MI, TB
DRAWN BY: TB, DJR
CHECKED BY: TD, MI

04/13/2005 07:28:56 AM