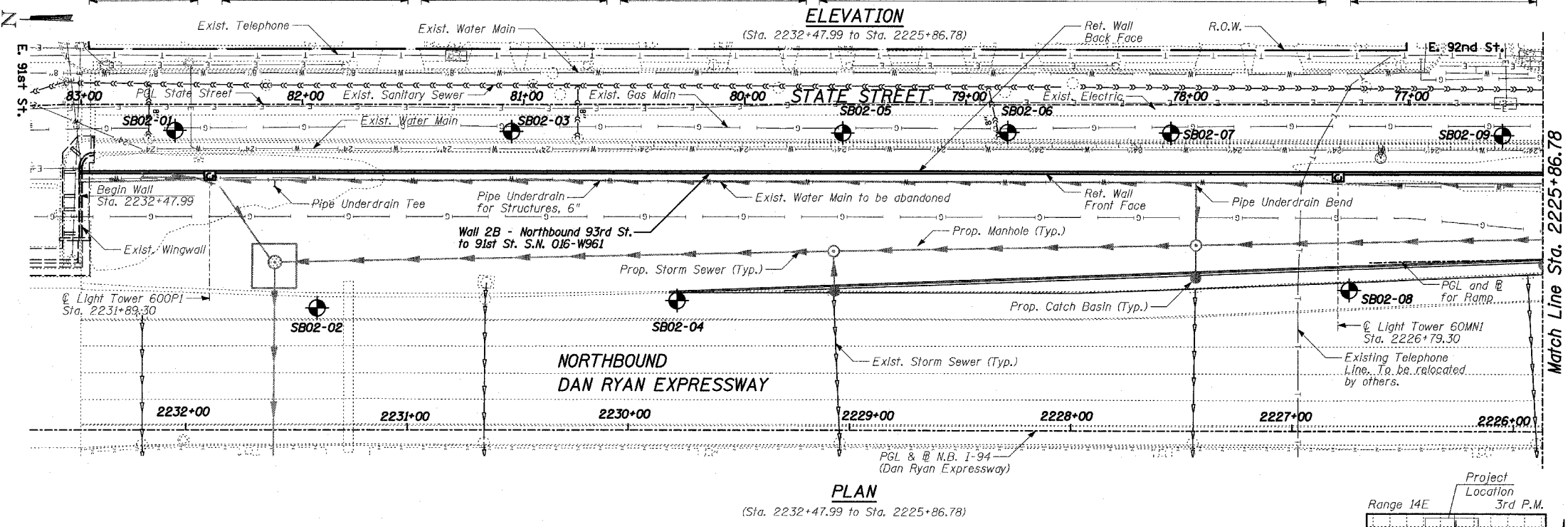
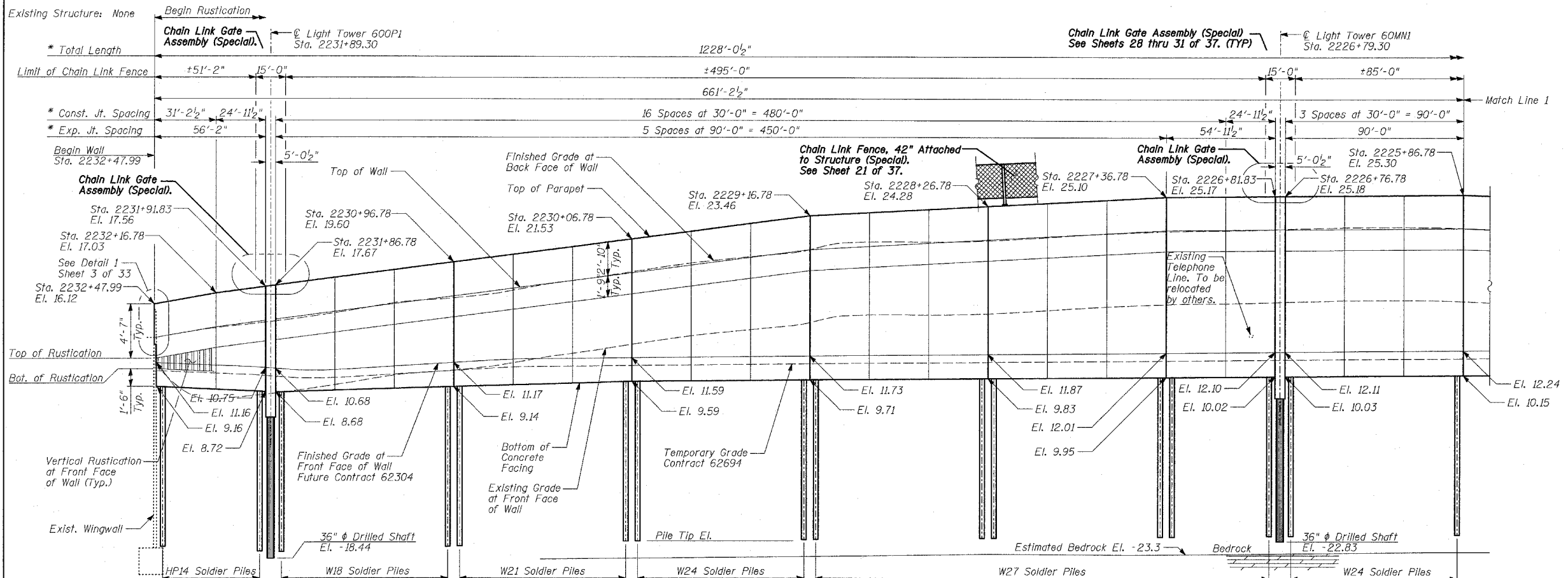


Benchmarks: BM 3522 Set "+" on south southeast flange bolt of hydrant ± halfway between north and south entrance to Citgo, east side of State St. and north of 95th St. El. 18.06

F.A.I. RTE.	SECTION	COUNTY	TOTAL SHEETS	SHEET NO.
94		COOK	37	15
STA. 2210+00.00 TO STA. 2356+00.00				
FED. ROAD DIST. NO. ILLINOIS FED. AID PROJECT				
• (1516.1, 1717 & 1818) I-3				
				62932

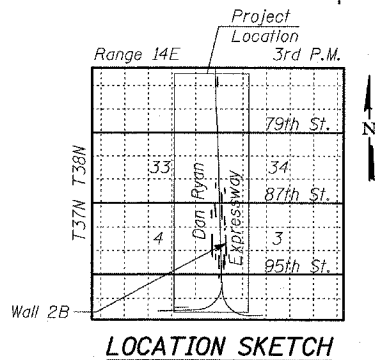


DESIGN SPECIFICATION
AASHTO 2002 Standard Specifications for Highway Bridges

DESIGN STRESSES
FIELD UNITS
f_c = 3,500 psi
f_y = 60,000 psi (Reinforcement)
f_y = 36,000 psi (M270 Grade 36) Soldier Piles

LEGEND
 Boring Location
 * Measured along Front Face of Wall.

TYLIN INTERNATIONAL



REVISIONS	
NAME	DATE

ILLINOIS DEPARTMENT OF TRANSPORTATION
F.A.I. 94 (DAN RYAN EXPRESSWAY)
RETAINING WALL ALONG STATE ST.
93RD ST. TO 91ST ST.
WALL 2B - GENERAL PLAN
STA. 2232+47.99 TO STA. 2220+20.60
 S.N. 016-W961 DESIGNED BY: MI, DJR
 SCALE: N.T.S. DRAWN BY: DJR, MAF
 DATE: APRIL 15, 2005 CHECKED BY: TD, MI

04/13/2005 07:29:11 AM