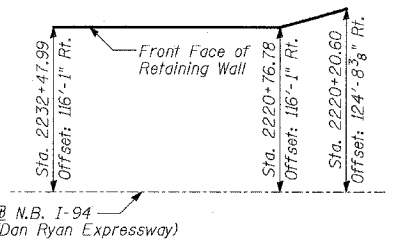
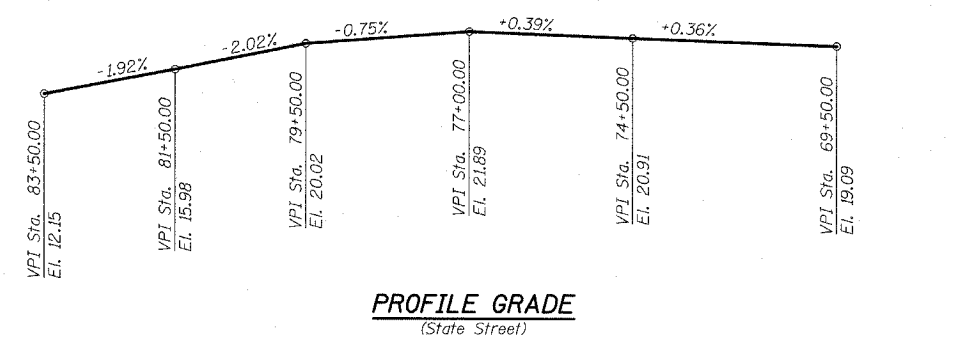
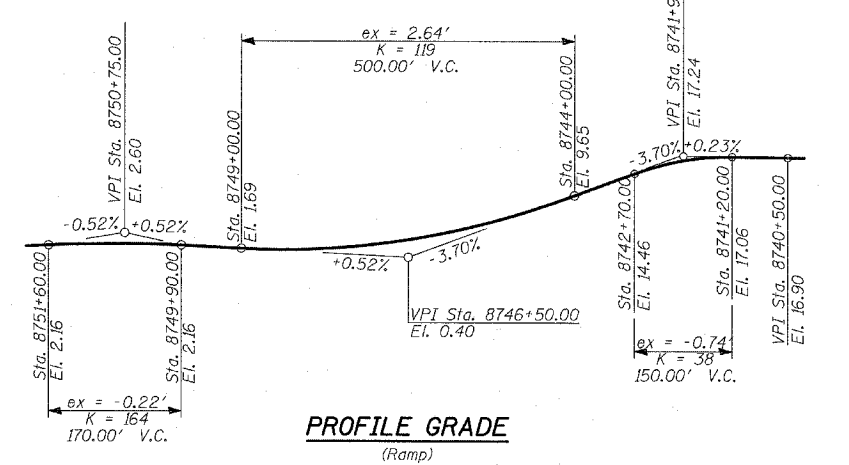
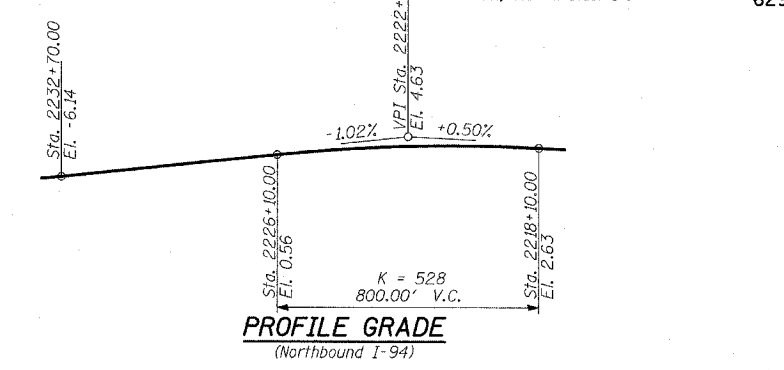
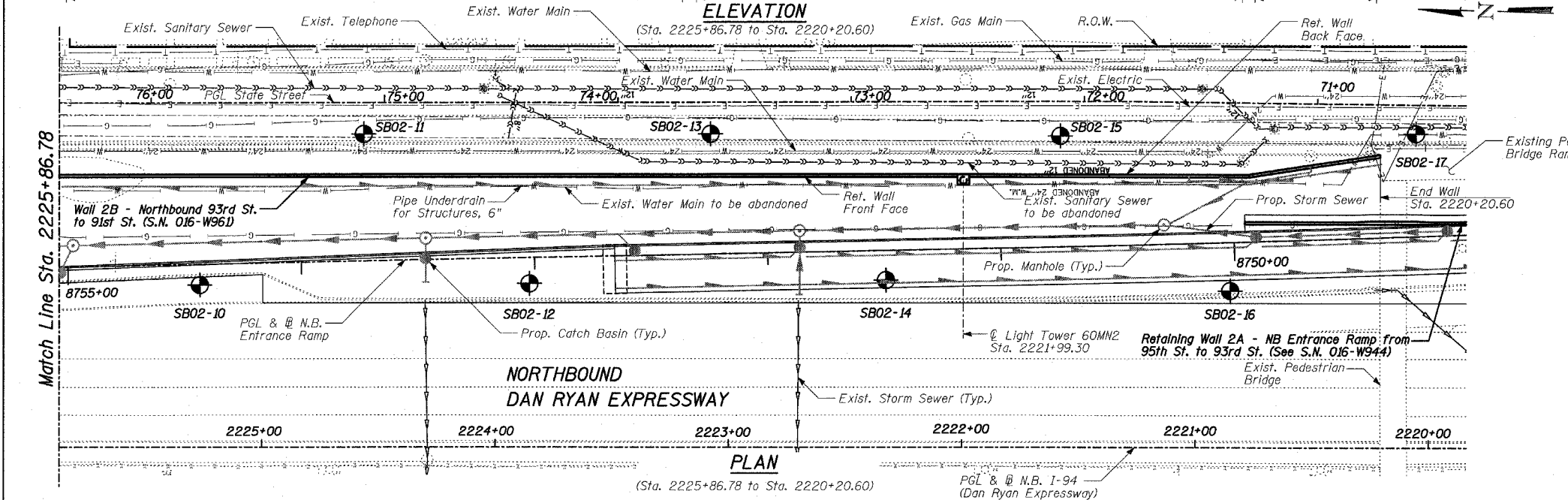
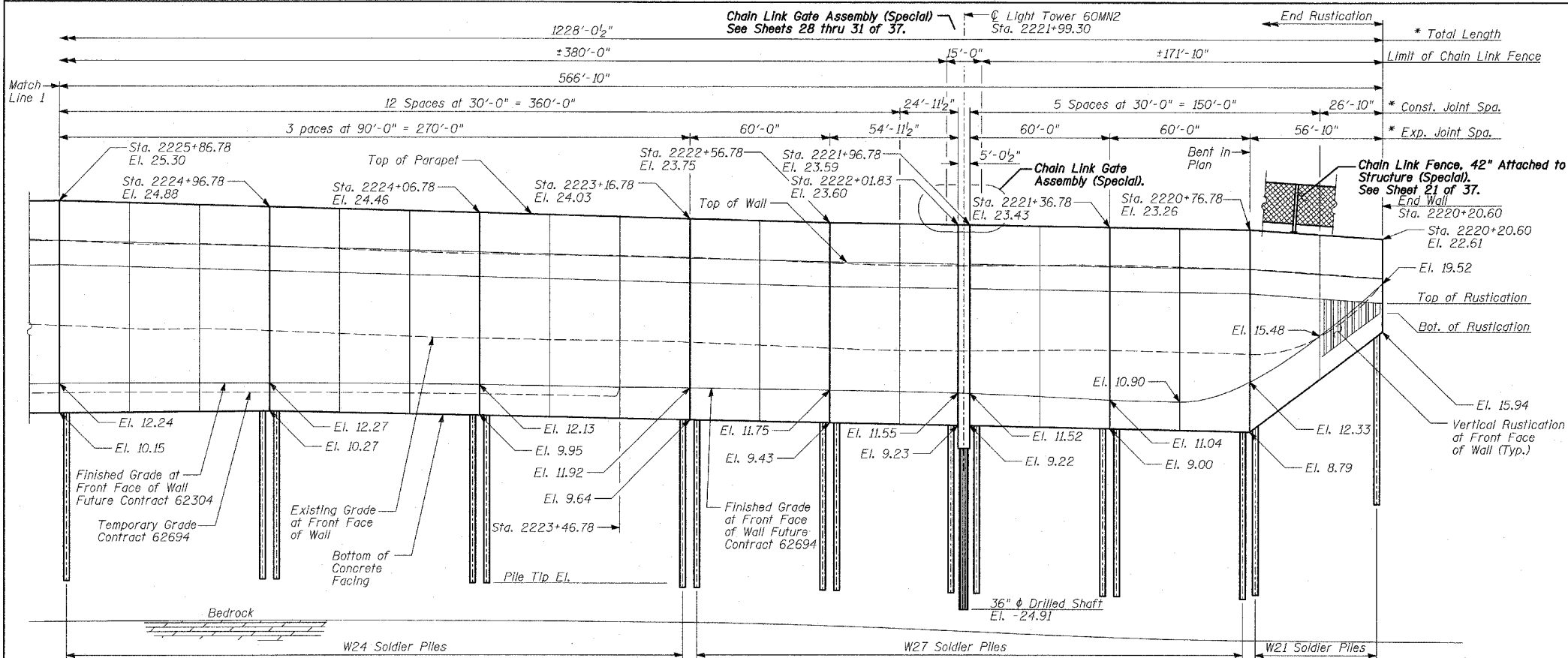


F.A.I. RTE.	SECTION	COUNTY	TOTAL SHEETS	SHEET NO.
94	*	COOK	37	16
STA. 2210+00.00 TO STA. 2356+00.00		ILLINOIS FED. AID PROJECT		
FED. ROAD DIST. NO.		• (1516.1, 1717 & 1818) 1-3		
		62932		



LEGEND

● Boring Location

* Measured along Front Face of Wall.

REVISIONS	
NAME	DATE

ILLINOIS DEPARTMENT OF TRANSPORTATION
F.A.I. 94 (DAN RYAN EXPRESSWAY)
RETAINING WALL ALONG STATE ST.
93RD ST. TO 91ST ST.
WALL 2B - GENERAL PLAN
STA. 2232+47.99 TO STA. 2220+20.60
 S.N. 016-W961 DESIGNED BY: MI, DJR
 SCALE: N.T.S. DRAWN BY: DJR, MAF
 DATE: APRIL 15, 2005 CHECKED BY: TD, MI

TYLIN INTERNATIONAL

04/15/2005 07:29:25 AM