

Benchmarks: BM 2251 Found cross on east bolt of fire hydrant on the east side of State St. Approximately 135 feet north of 79th St. El.=0.95 Feet

Existing Structure: None

* Total Length 1170'-0"

Limits of Chain Link Fence ±374'-0"

* Const. Jt. Spacing 12 Spaces at 30'-0" = 360'-0"

* Exp. Jt. Spacing 2 Spaces at 60'-0" = 120'-0"

Begin Wall Sta. 2327+71.00 El. 12.19

Light Tower 5RMN5 Sta. 2328+33.96 El. 12.14

Light Tower 5REF1 Sta. 2324+40.46

Light Tower 5RMN5 Sta. 2328+33.96 El. 12.14

Light Tower 5REF1 Sta. 2324+40.46

Light Tower 5RMN5 Sta. 2328+33.96 El. 12.14

Light Tower 5REF1 Sta. 2324+40.46

Light Tower 5RMN5 Sta. 2328+33.96 El. 12.14

Light Tower 5REF1 Sta. 2324+40.46

Light Tower 5RMN5 Sta. 2328+33.96 El. 12.14

Light Tower 5REF1 Sta. 2324+40.46

Light Tower 5RMN5 Sta. 2328+33.96 El. 12.14

Light Tower 5REF1 Sta. 2324+40.46

Light Tower 5RMN5 Sta. 2328+33.96 El. 12.14

Light Tower 5REF1 Sta. 2324+40.46

Light Tower 5RMN5 Sta. 2328+33.96 El. 12.14

Light Tower 5REF1 Sta. 2324+40.46

Light Tower 5RMN5 Sta. 2328+33.96 El. 12.14

Light Tower 5REF1 Sta. 2324+40.46

Light Tower 5RMN5 Sta. 2328+33.96 El. 12.14

Light Tower 5REF1 Sta. 2324+40.46

Light Tower 5RMN5 Sta. 2328+33.96 El. 12.14

Light Tower 5REF1 Sta. 2324+40.46

Light Tower 5RMN5 Sta. 2328+33.96 El. 12.14

Light Tower 5REF1 Sta. 2324+40.46

Light Tower 5RMN5 Sta. 2328+33.96 El. 12.14

Light Tower 5REF1 Sta. 2324+40.46

Light Tower 5RMN5 Sta. 2328+33.96 El. 12.14

Light Tower 5REF1 Sta. 2324+40.46

Light Tower 5RMN5 Sta. 2328+33.96 El. 12.14

Light Tower 5REF1 Sta. 2324+40.46

Light Tower 5RMN5 Sta. 2328+33.96 El. 12.14

Light Tower 5REF1 Sta. 2324+40.46

Light Tower 5RMN5 Sta. 2328+33.96 El. 12.14

Light Tower 5REF1 Sta. 2324+40.46

Light Tower 5RMN5 Sta. 2328+33.96 El. 12.14

Light Tower 5REF1 Sta. 2324+40.46

Light Tower 5RMN5 Sta. 2328+33.96 El. 12.14

Light Tower 5REF1 Sta. 2324+40.46

Light Tower 5RMN5 Sta. 2328+33.96 El. 12.14

Light Tower 5REF1 Sta. 2324+40.46

Light Tower 5RMN5 Sta. 2328+33.96 El. 12.14

Light Tower 5REF1 Sta. 2324+40.46

Light Tower 5RMN5 Sta. 2328+33.96 El. 12.14

Light Tower 5REF1 Sta. 2324+40.46

Light Tower 5RMN5 Sta. 2328+33.96 El. 12.14

Light Tower 5REF1 Sta. 2324+40.46

Light Tower 5RMN5 Sta. 2328+33.96 El. 12.14

Light Tower 5REF1 Sta. 2324+40.46

Light Tower 5RMN5 Sta. 2328+33.96 El. 12.14

Light Tower 5REF1 Sta. 2324+40.46

Light Tower 5RMN5 Sta. 2328+33.96 El. 12.14

Light Tower 5REF1 Sta. 2324+40.46

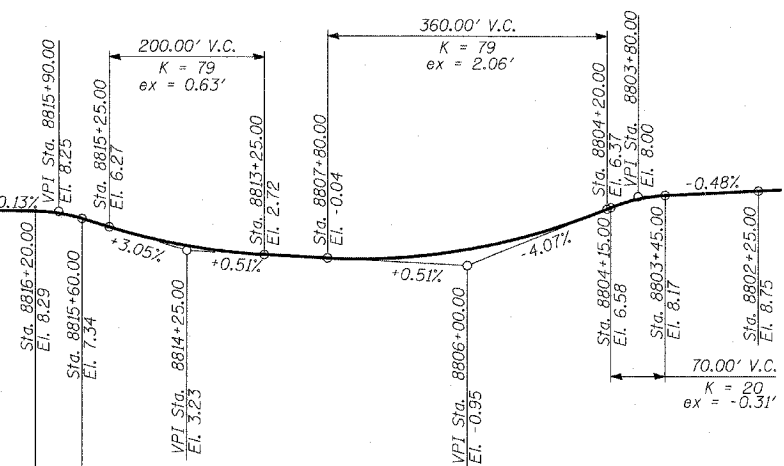
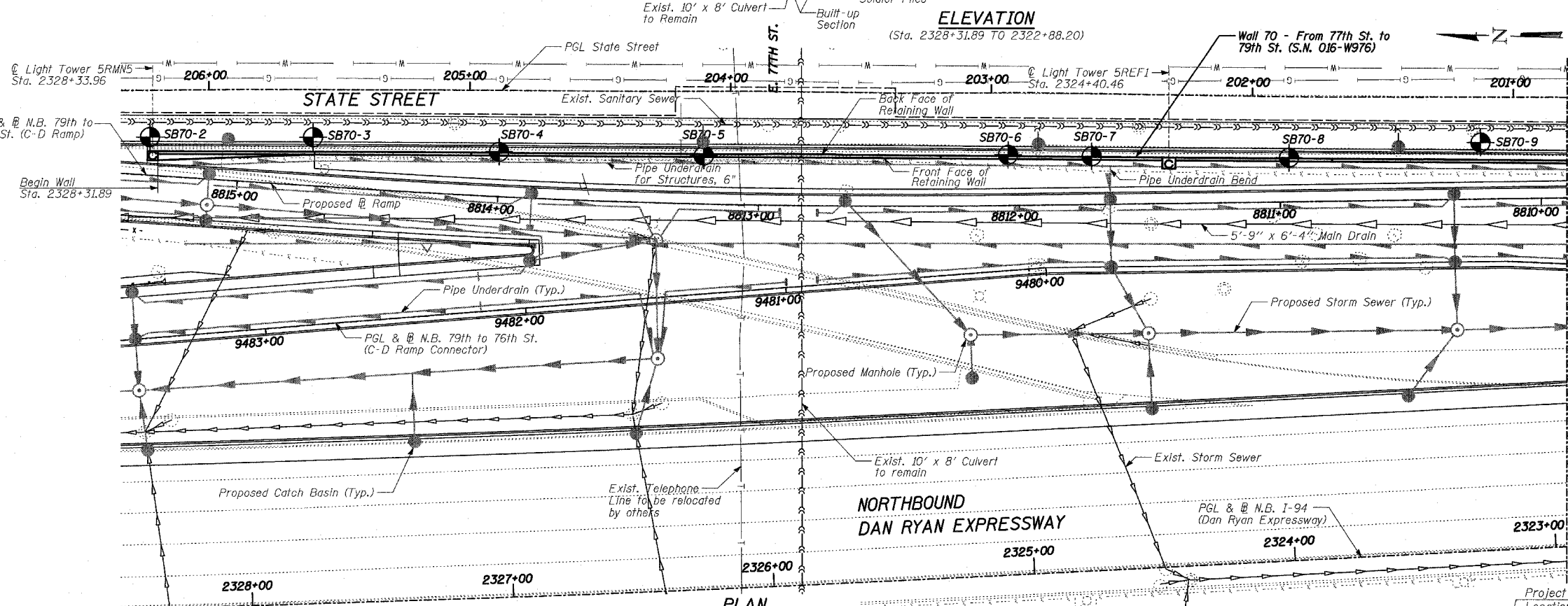
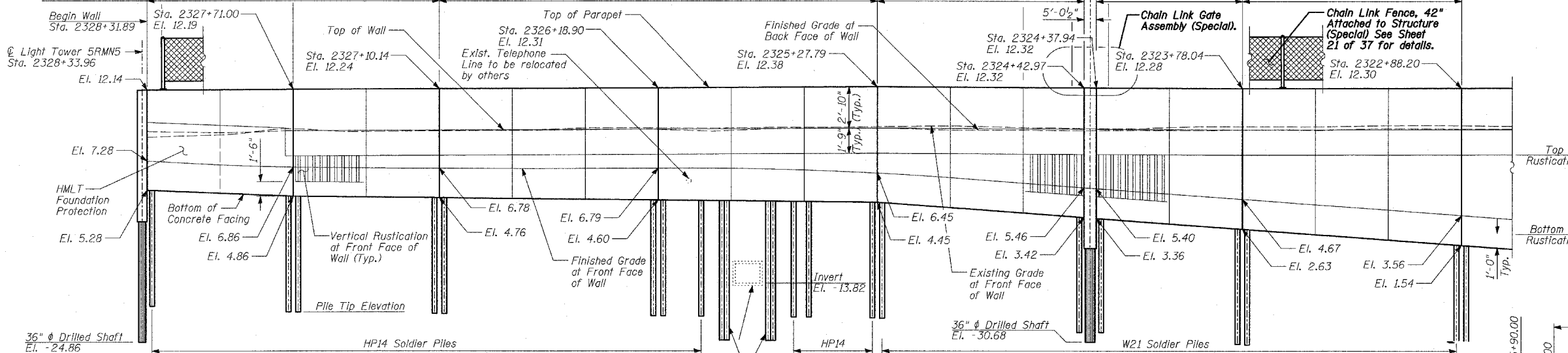
Light Tower 5RMN5 Sta. 2328+33.96 El. 12.14

Light Tower 5REF1 Sta. 2324+40.46

Light Tower 5RMN5 Sta. 2328+33.96 El. 12.14

Light Tower 5REF1 Sta. 2324+40.46

F.A.I. RTE.	SECTION	COUNTY	TOTAL SHEETS	SHEET NO.
94		COOK	37	18
STA. 2210+00.00 TO STA. 2356+00.00				
FED. ROAD DIST. NO. ILLINOIS FED. AID PROJECT				
• (1516.1, 1717 & 1818) I-3				
62932				



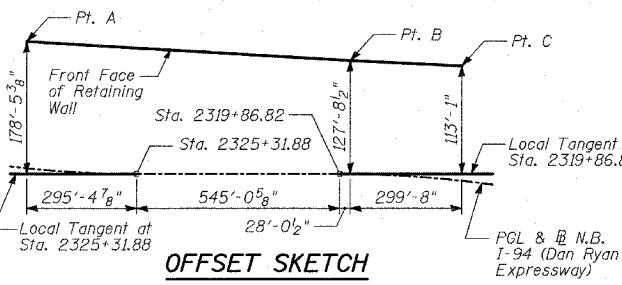
DESIGN SPECIFICATION
AASHTO 2002 Standard Specifications for Highway Bridges

DESIGN STRESSES
FIELD UNITS
f_c = 3,500 psi
f_y = 60,000 psi (Reinforcement)
f_y = 36,000 psi (M270 Grade 36) Soldier Piles

LEGEND
Boring Location
* Measured along Front Face of Wall.

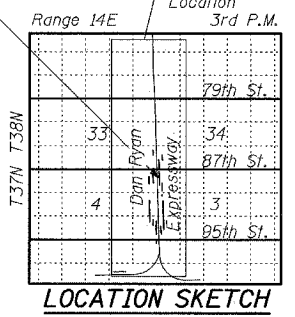
OFFSET SKETCH

Point	Station	Offset to N.B. I-94
A	2328+31.89	174'-7" Rt.
B	2319+59.07	127'-8 1/8" Rt.
C	2316+62.40	117'-8 5/8" Rt.



PROFILE GRADE (State St.)

VPI STA.	ELEVATION	GRADE
207+81.00	El. 8.96	0.05%
208+81.00	El. 8.96	0.18%
209+81.00	El. 8.91	-0.22%
210+81.00	El. 8.91	0.05%
211+81.00	El. 8.79	-0.04%
212+81.00	El. 8.79	-0.11%
213+81.00	El. 9.47	0.26%
214+81.00	El. 9.26	0.90%
215+81.00	El. 9.17	0.13%
216+81.00	El. 9.17	
217+81.00	El. 9.35	
218+81.00	El. 9.35	
219+81.00	El. 9.35	
220+81.00	El. 9.35	
221+81.00	El. 9.35	
222+81.00	El. 9.35	
223+81.00	El. 9.35	
224+81.00	El. 9.35	
225+81.00	El. 9.35	
226+81.00	El. 9.35	
227+81.00	El. 9.35	
228+81.00	El. 9.35	
229+81.00	El. 9.35	
230+81.00	El. 9.35	
231+81.00	El. 9.35	
232+81.00	El. 9.35	



REVISIONS

NAME	DATE

ILLINOIS DEPARTMENT OF TRANSPORTATION
F.A.I. 94 (DAN RYAN EXPRESSWAY)
RETAINING WALL ALONG STATE ST.
77TH ST. TO 78TH ST.
WALL 70 - GENERAL PLAN
STA. 2328+31.89 TO STA. 2322+88.20
S.N. 016-W976
SCALE: N.T.S.
DATE: APRIL 15, 2005

DESIGNED BY: MI, DJR
DRAWN BY: DJR, SB
CHECKED BY: TD, MI

TYLIN INTERNATIONAL

04/13/2005 07:29:41 AM