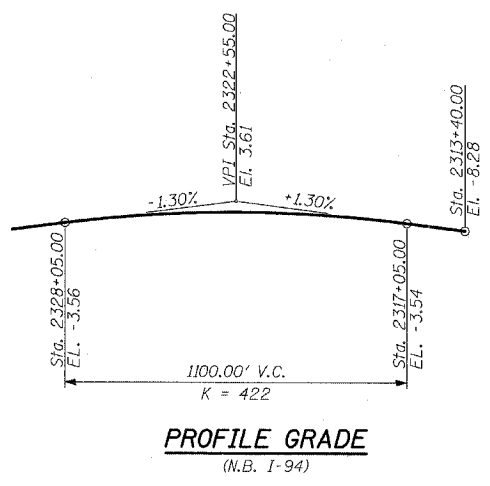
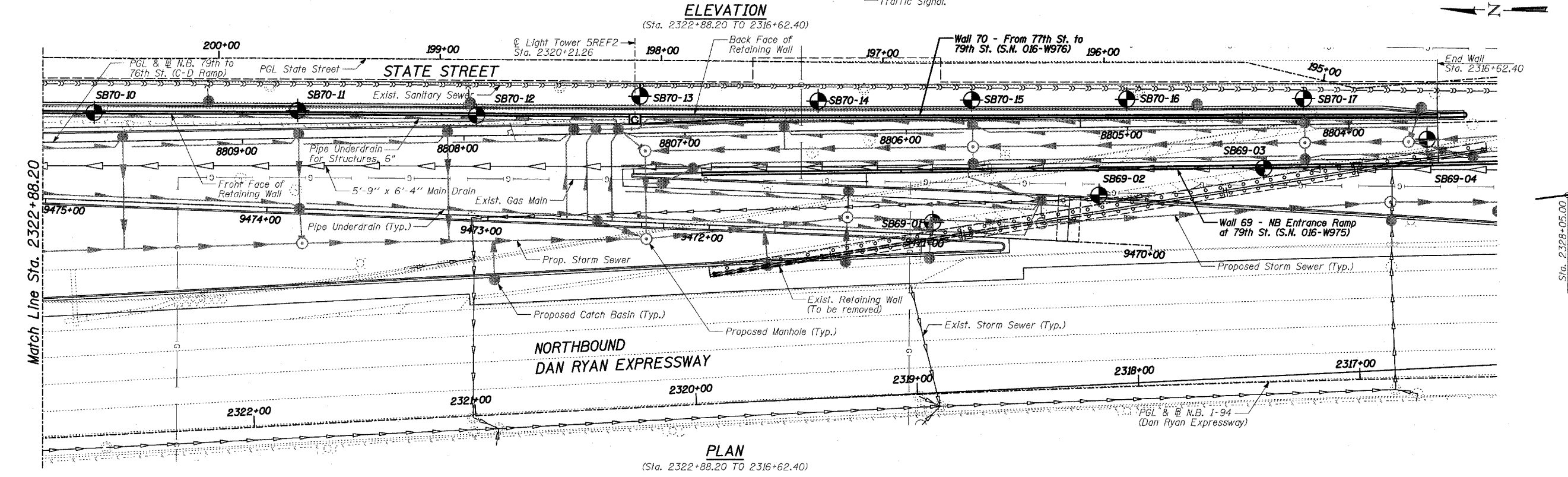
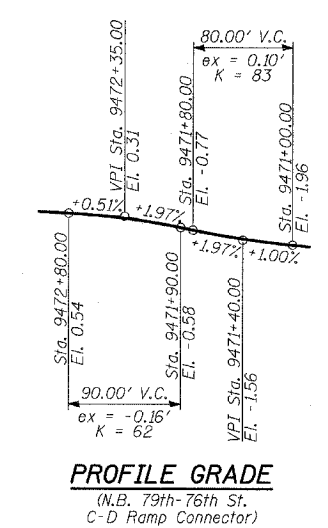
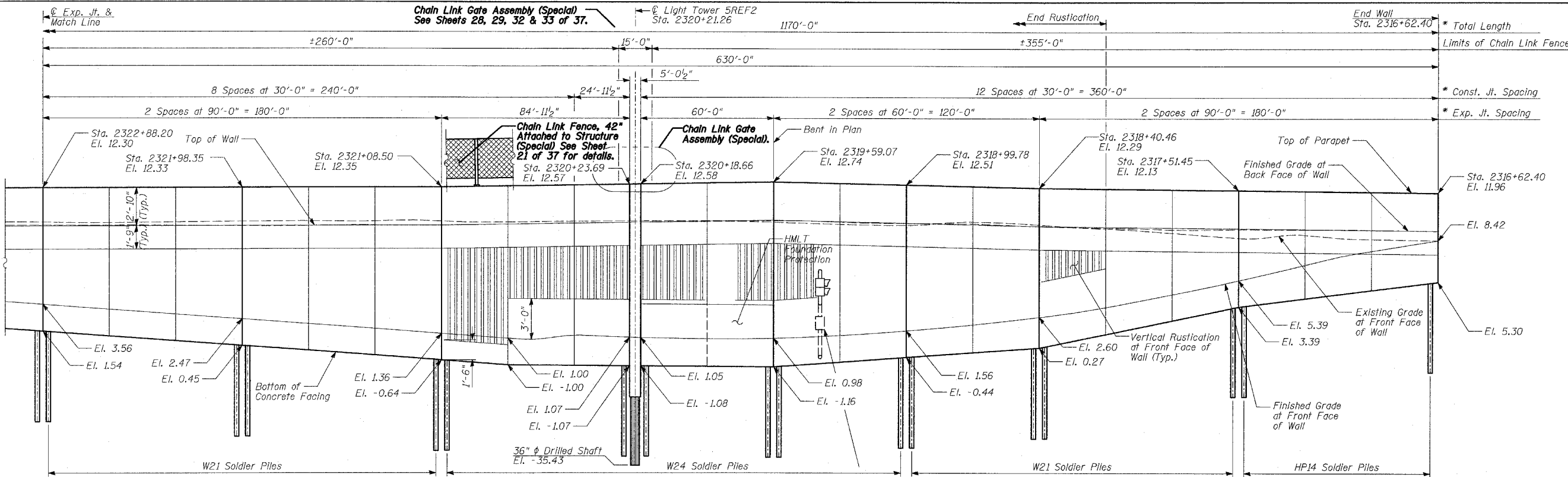


F.A.I. RTE.	SECTION	COUNTY	TOTAL SHEETS	SHEET NO.
94		COOK	37	19
STA. 2210+00.00 TO STA. 2356+00.00		FED. ROAD DIST. NO. ILLINOIS FED. AID PROJECT		
		• (1516.1, 1717 & 1818) I-3		
		62932		



LEGEND

• Boring Location

* Measured along Front Face of Wall.

CURVE DATA

Proposed Curve NBDRO1 Δ = 2° 58' 38.60" (LT) D = 0° 29' 58.77" R = 11,467.00 L = 595.89 E = 3.87 T = 298.01 P.C. STA = 2313+90.93 P.I. STA = 2316+88.94 P.T. STA = 2319+86.82	Proposed Curve NBDRO2 Δ = 3° 16' 48.34" (RT) D = 0° 30' 01.44" R = 11,450.00 L = 655.49 E = 4.69 T = 327.84 P.C. STA = 2325+31.88 P.I. STA = 2328+59.71 P.T. STA = 2331+87.37	Proposed Curve 79B76C-1 Δ = 4° 25' 49.28" (RT) D = 2° 51' 53.24" R = 2,000.00 L = 154.65 E = 1.50 T = 77.36 P.C. STA = 8802+22.95 P.I. STA = 8803+00.31 P.T. STA = 8803+77.60	Proposed Curve 79B76C-2 Δ = 4° 41' 07.98" (RT) D = 1° 50' 53.70" R = 3,100.00 L = 253.51 E = 2.59 T = 126.83 P.C. STA = 8812+01.74 P.I. STA = 8813+28.57 P.T. STA = 8814+55.25
--	--	--	---

REVISIONS

NAME	DATE

ILLINOIS DEPARTMENT OF TRANSPORTATION
F.A.I. 94 (DAN RYAN EXPRESSWAY)
RETAINING WALL ALONG STATE ST.
77TH ST. TO 78TH ST.
WALL 70 - GENERAL PLAN
STA. 2322+88.20 TO STA. 2316+62.40
S.N. 016-W976
SCALE: N.T.S.
DATE: APRIL 15, 2005

DESIGNED BY: MI, DJR
DRAWN BY: DJR, SB
CHECKED BY: TD, MI

TYLIN INTERNATIONAL

04/15/2005 07:29:49 AM