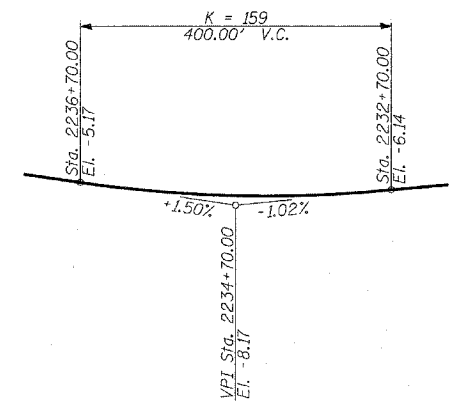
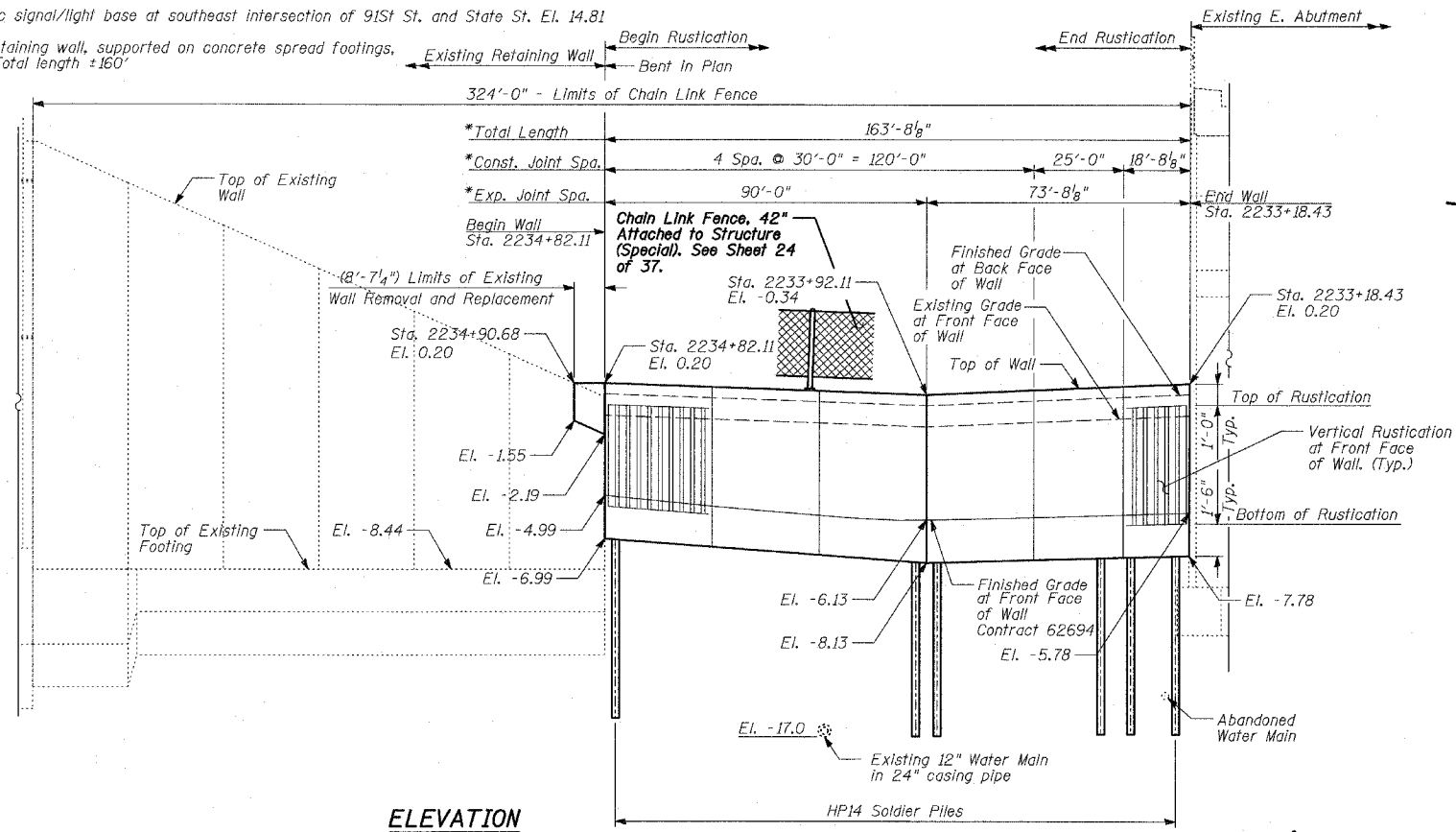


Benchmarks: BM 3552 Set "+" northeast bolt of traffic signal/light base at southeast intersection of 91st St. and State St. El. 14.81

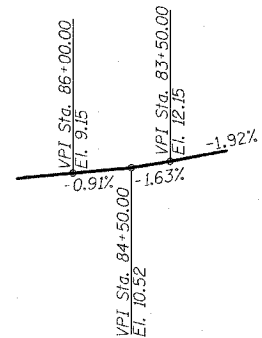
Existing: Structure: Reinforced concrete cantilever retaining wall, supported on concrete spread footings, along Northbound Dan Ryan. Built in 1960. Total length ±160'

Salvage: Total

F.A.I. RTE.	SECTION	COUNTY	TOTAL SHEETS	SHEET NO.
94	*	COOK	37	22
STA. 2210+00.00 TO STA. 2356+00.00		FED. ROAD DIST. NO. ILLINOIS FED. AID PROJECT		
* (1516.1, 1717 & 1818) I-3		62932		



PROFILE GRADE
(N.B. I-94)



PROFILE GRADE
(State Street)

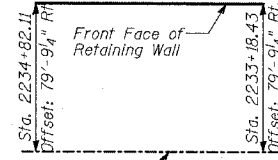
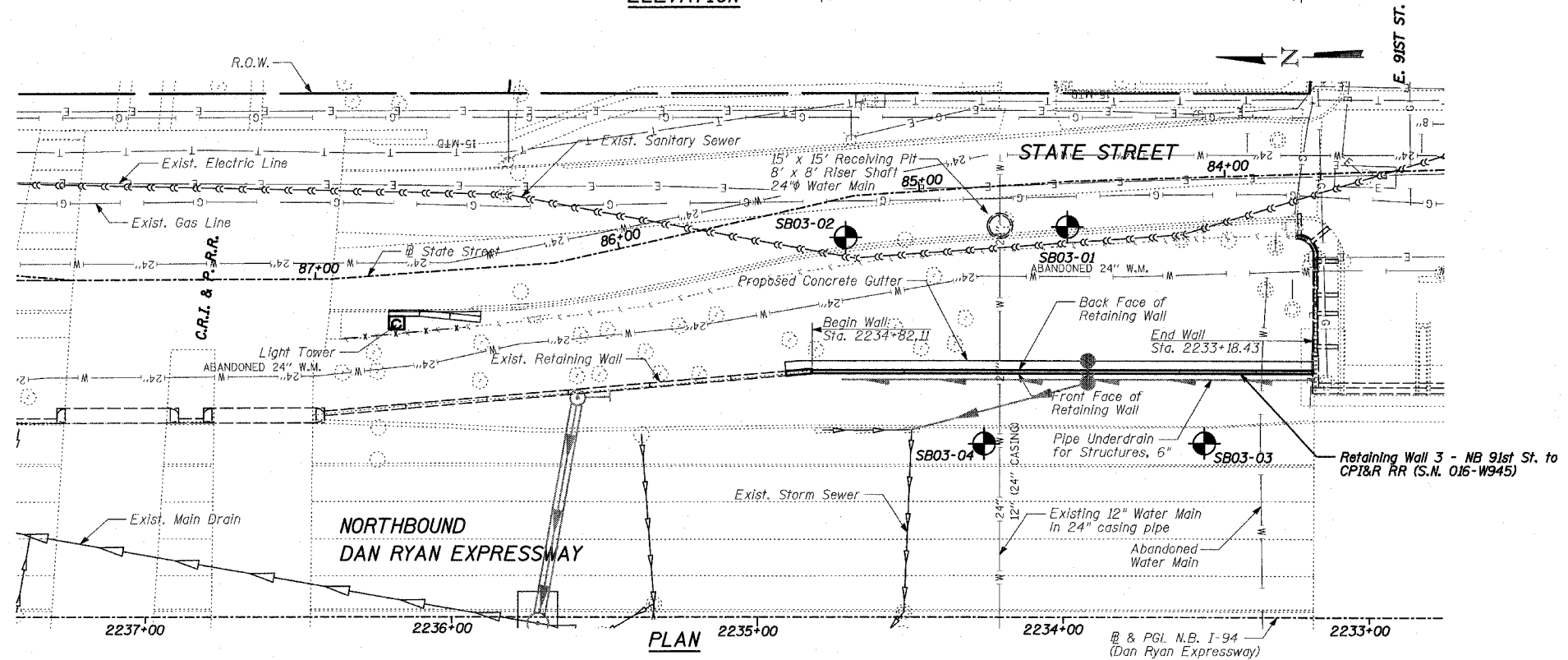
DESIGN SPECIFICATION

AASHTO 2002 Standard Specifications for Highway Bridges

DESIGN STRESSES

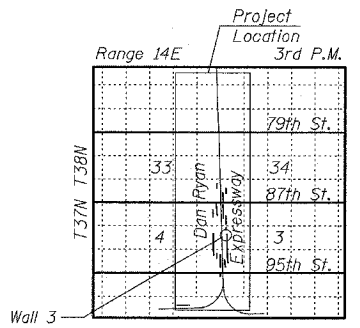
FIELD UNITS

$f'_c = 3,500$ psi
 $f_y = 60,000$ psi (Reinforcement)
 $f_y = 36,000$ psi (M270 Grade 36)
 Solder Piles



(N.B. I-94 (Dan Ryan Expressway))

OFFSET SKETCH



LOCATION SKETCH

- LEGEND**
- Boring Location
 - Measured along Front Face of Wall.

TYLIN INTERNATIONAL

REVISIONS	
NAME	DATE

ILLINOIS DEPARTMENT OF TRANSPORTATION
F.A.I. 94 (DAN RYAN EXPRESSWAY)
RETAINING WALL ALONG STATE ST.
91ST ST. TO CPI&R RR
WALL 3 - GENERAL PLAN
STA. 2234+82.11 TO STA. 2233+18.43
 S.N. 016-W945
 DATE: APRIL 15, 2005

DESIGNED BY: MI, MAF
 DRAWN BY: MAF, TB
 CHECKED BY: TD, MI

P:\0231\3\road\ref\paper\14r_3a_w945.dgn 04/13/2005 07:50:40 AM