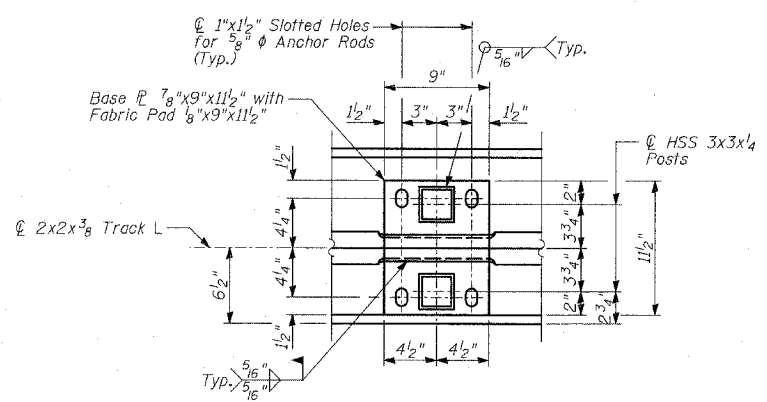
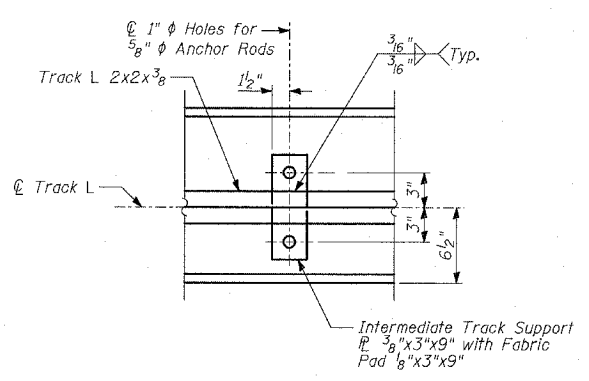


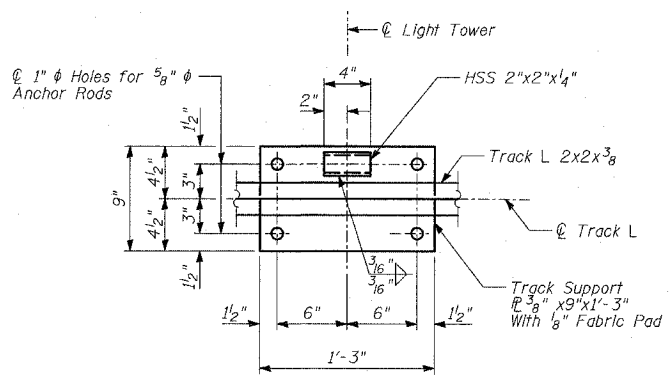
PLAN - GATE IN OPEN POSITION



DETAIL 1 - BASE P PLAN



DETAIL 2



DETAIL 3

BILL OF MATERIAL

WALL	ITEM	UNIT	TOTAL
2B	Chain Link Gate Assembly (Special)	EACH	3
AIS1	Chain Link Gate Assembly (Special)	EACH	1
6	Chain Link Gate Assembly (Special)	EACH	1
69	Chain Link Gate Assembly (Special)	EACH	1
70	Chain Link Gate Assembly (Special)	EACH	2
AIS2	Chain Link Gate Assembly (Special)	EACH	2
	Total	EACH	10

NOTES:

- All rods shall be stainless steel conforming to ASTM F593-98 and F594-98.
- All pipes and bars shall be hot dipped galvanized after fabrication.
- For Back Face Elevations, see Sheet 29 of 37.
- For Anchor Rod Details, see Sheets 30 & 32 of 37.

REVISIONS	
NAME	DATE

ILLINOIS DEPARTMENT OF TRANSPORTATION
 F.A.I. 94 (DAN RYAN EXPRESSWAY)
 RETAINING WALL ALONG STATE ST.
 93RD ST. TO 91ST ST.
 WALLS 2B, AIS1, 6, 69, 70 & AIS2
 GATE PLAN AND NOTES
 DESIGNED BY: MI, DJR
 DRAWN BY: DJR, MAF
 CHECKED BY: TD, MI
 SCALE: N.T.S.
 DATE: APRIL 15, 2005

04/13/2005 07:30:35 AM
 P:\02373\road\c71\ansit\dr\30737a_296.dgn