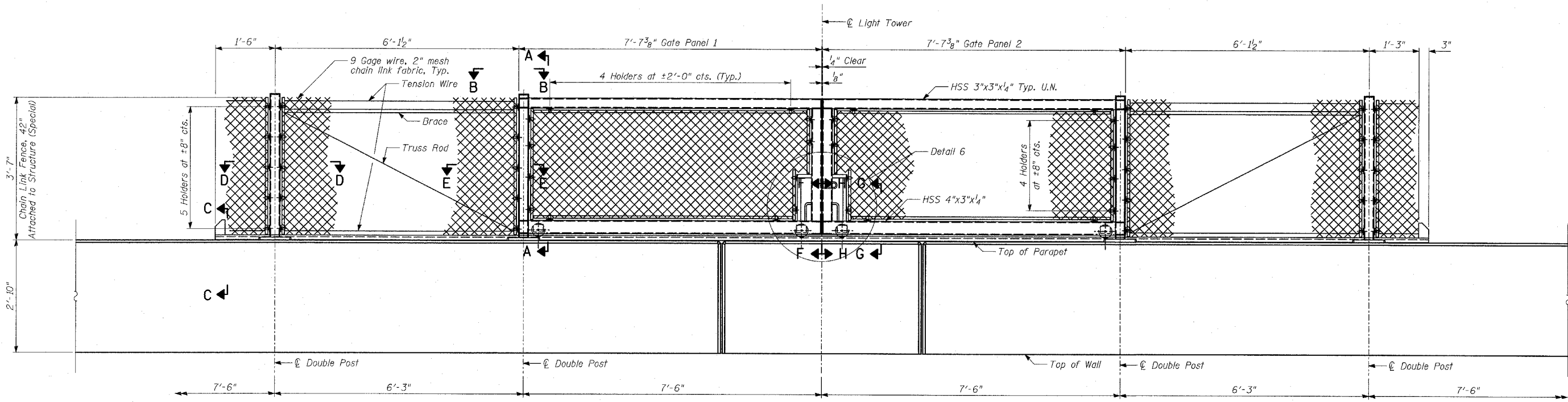


BACK FACE ELEVATION - GATE IN OPEN POSITION



BACK FACE ELEVATION - GATE IN CLOSED POSITION

NOTES:

- For notes, see Sheet 28 of 37.
- For Sections A-A, B-B, D-D & E-E, see Sheets 30 and 32 of 37.
- For Sections C-C, F-F, G-G, H-H, J-J and Details 4, 5, 6 & 7, see Sheets 31 and 33 of 37.

REVISIONS	
NAME	DATE

ILLINOIS DEPARTMENT OF TRANSPORTATION
 F.A.I. 94 (DAN RYAN EXPRESSWAY)
 RETAINING WALL ALONG STATE ST.
 ENTRANCE RAMP AT 79TH ST.
 WALLS 2B, AIS1, 6, 69, 70 & AIS2
 GATE ELEVATIONS

DESIGNED BY: MI, DJR
 DRAWN BY: DJR
 CHECKED BY: TD, MI
 SCALE: N.T.S.
 DATE: APRIL 15, 2005