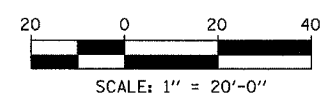
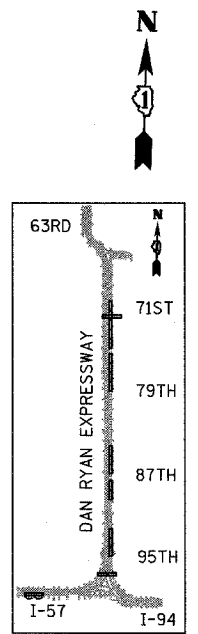
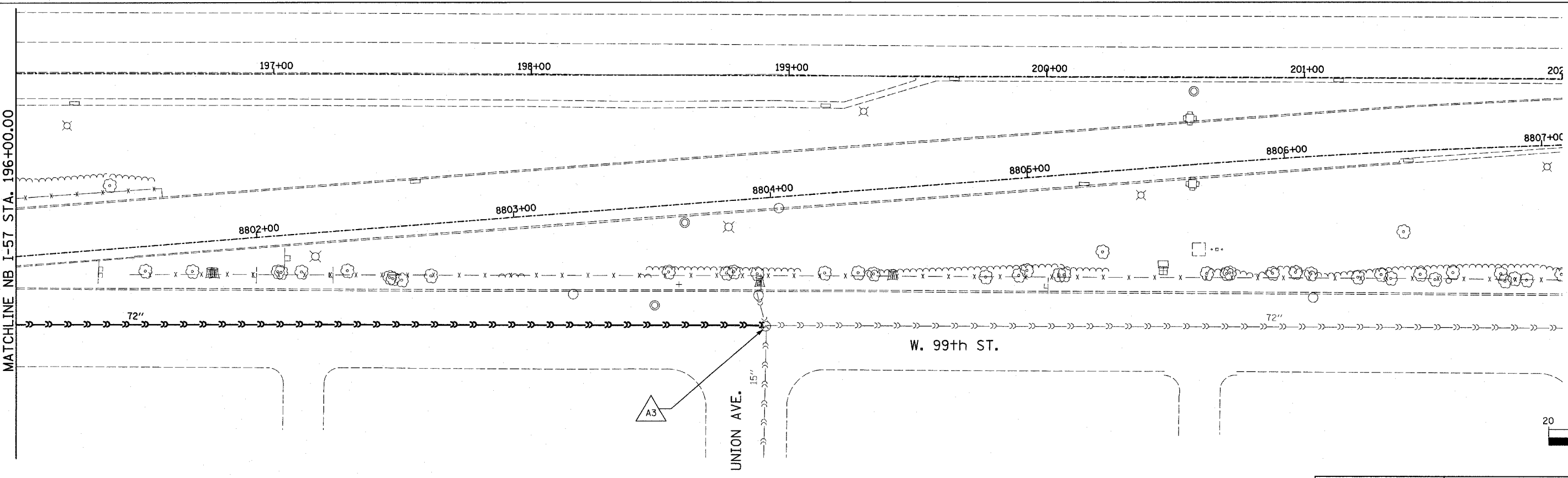
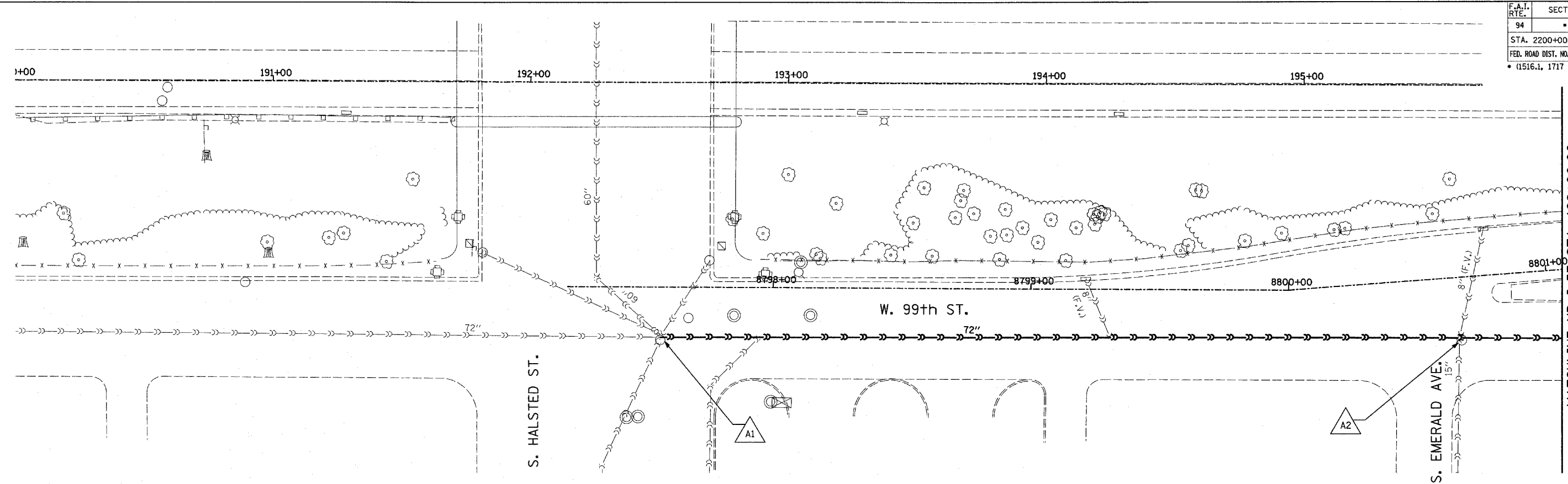


F.A.I. RTE.	SECTION	COUNTY	TOTAL SHEETS	SHEET NO.
94		COOK	20	6
STA. 2200+00.00		TO STA. 2362+00.00		
FED. ROAD DIST. NO.	ILLINOIS	FED. AID PROJECT		
* (1516.1, 1717 & 1818) T-2				62936



- LEGEND:**
- EXISTING COMBINED SEWER
  - EXISTING COMBINED SEWER TO BE TELEVIEWED
  - XY MANHOLE STRUCTURE NO.

REVISIONS	
NAME	DATE

ILLINOIS DEPARTMENT OF TRANSPORTATION  
**F.A.I. 94 (DAN RYAN EXPRESSWAY)**  
**SEWER TELEVIEWING**  
**HALSTED ENTRANCE RAMP**

SCALE: 1"=20'-0"  
 DATE: APRIL 15, 2005

DRAWN BY: DE, AMB  
 CHECKED BY: TGB

**TYLIN** INTERNATIONAL

P:\02373\road\civil\review\7\est\03\03.dwg 4/14/2005 9:45:13 AM