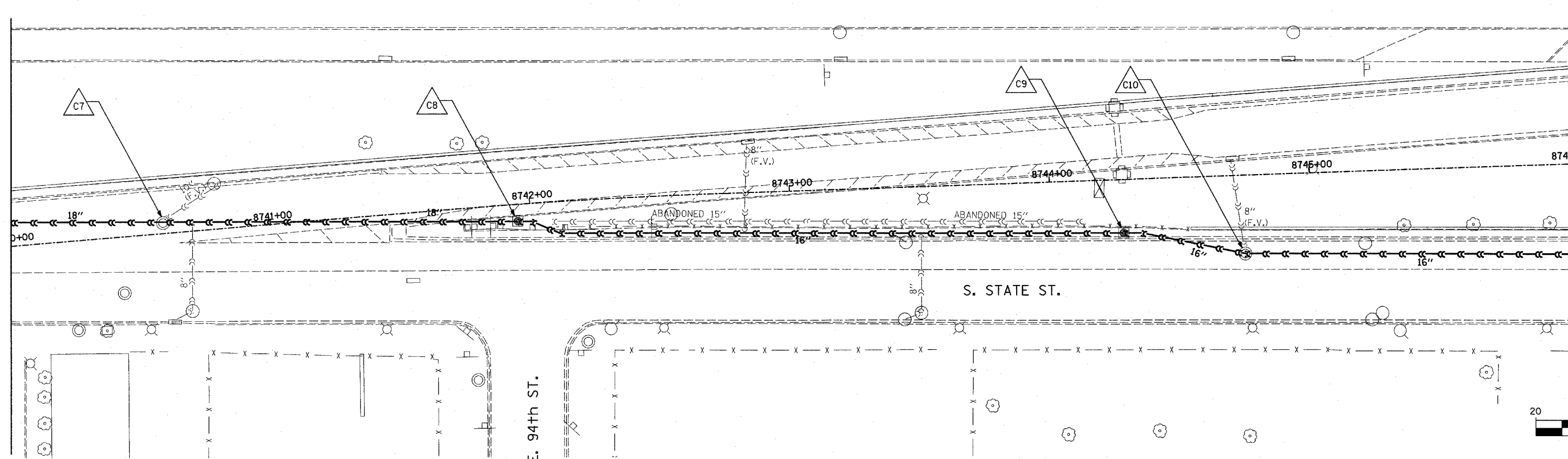
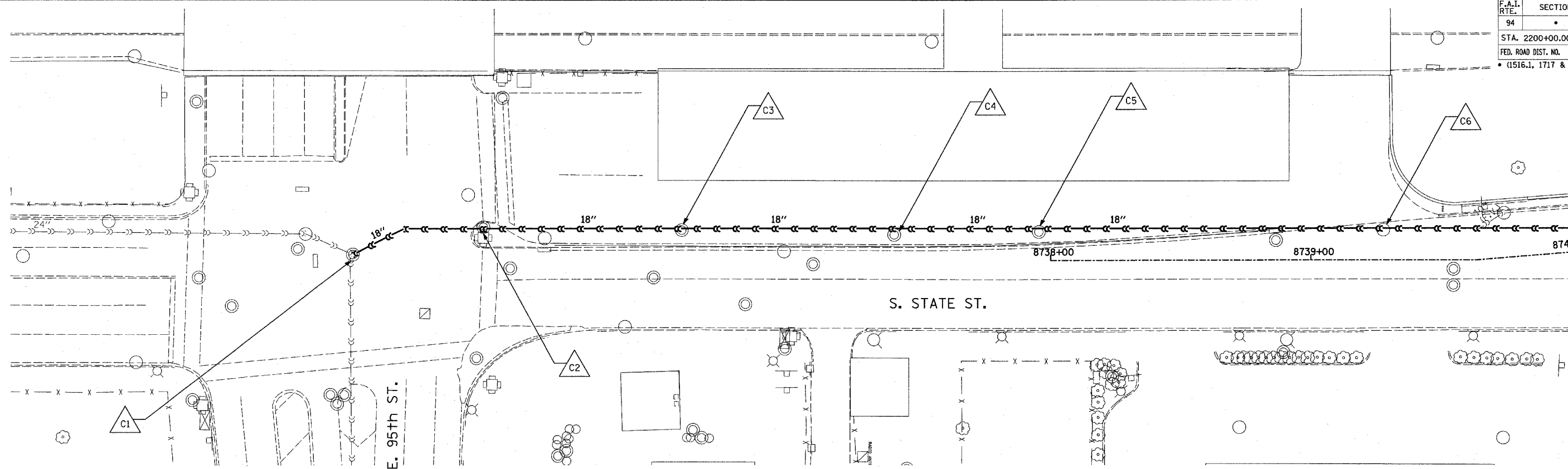


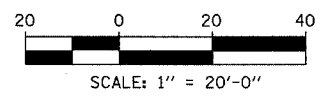
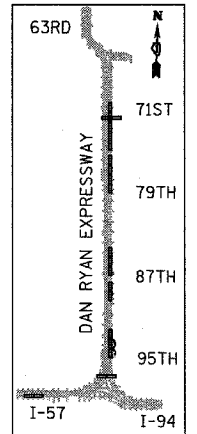
F.A.I. RTE.	SECTION	COUNTY	TOTAL SHEETS	SHEET NO.
94		COOK	20	8
STA. 2200+00.00		TO STA. 2362+00.00		
FED. ROAD DIST. NO.		ILLINOIS FED. AID PROJECT		
(1516.1, 1717 & 1818) T-2		62936		



MATCHLINE RAMP STA. 8740+00



MATCHLINE RAMP STA. 8746+00



- LEGEND:**
- EXISTING COMBINED SEWER
 - EXISTING COMBINED SEWER TO BE TELEVISIED
 - △ XY MANHOLE STRUCTURE NO.

REVISIONS	
NAME	DATE

ILLINOIS DEPARTMENT OF TRANSPORTATION
 F.A.I. 94 (DAN RYAN EXPRESSWAY)
**SEWER TELEVISION
 95TH ENTRANCE RAMP**

SCALE: 1"=20'-0"
 DATE: APRIL 15, 2005

DRAWN BY: DE, AMB
 CHECKED BY: TGB

TYLIN INTERNATIONAL

P:\0237\3\road\07\rev\17\170330.dwg 9:43:48 AM 4/17/2005