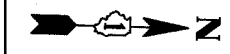
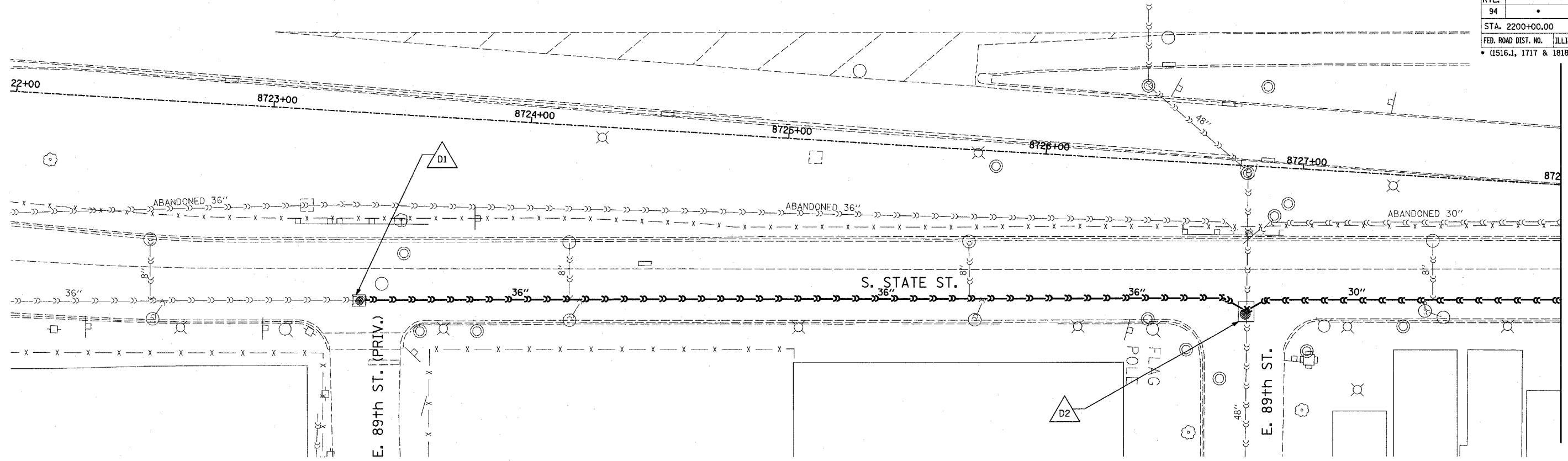
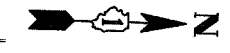
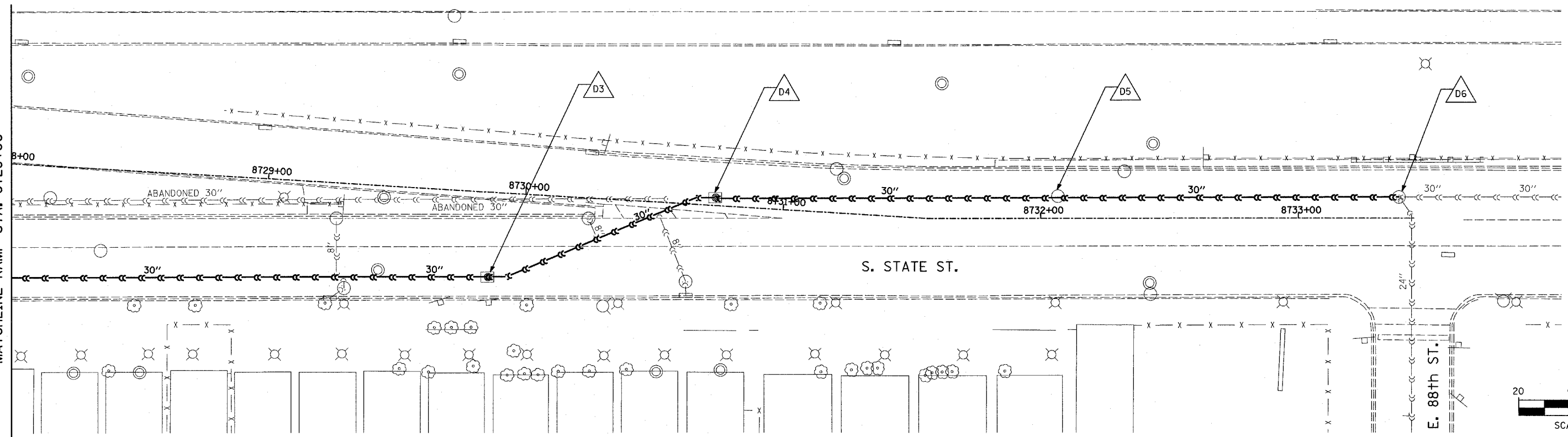


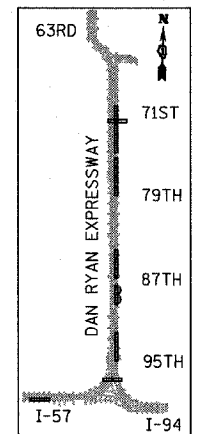
F.A.I. RTE.	SECTION	COUNTY	TOTAL SHEETS	SHEET NO.
94		COOK	20	10
STA. 2200+00.00		TO STA. 2362+00.00		
FED. ROAD DIST. NO.	ILLINOIS FED. AID PROJECT		62936	
(1516.1, 1717 & 1818) T-2				



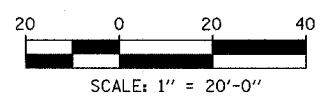
MATCHLINE RAMP STA. 8728+00



MATCHLINE RAMP STA. 8728+00



LOCATION MAP



**TYLIN** INTERNATIONAL

**LEGEND:**

- EXISTING COMBINED SEWER
- EXISTING COMBINED SEWER TO BE TELEVIEWED
- MANHOLE STRUCTURE NO.

REVISIONS	
NAME	DATE

ILLINOIS DEPARTMENT OF TRANSPORTATION  
**F.A.I. 94 (DAN RYAN EXPRESSWAY)**  
**SEWER TELEVISION**  
**87TH EXIT RAMP**  
 SCALE: 1"=20'-0"  
 DATE: APRIL 15, 2005  
 DRAWN BY: DE, AMB  
 CHECKED BY: TGB

P:\02373\Road\94\9412\9412.dwg 4/14/2005 9:44:12 AM