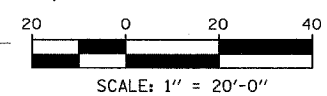
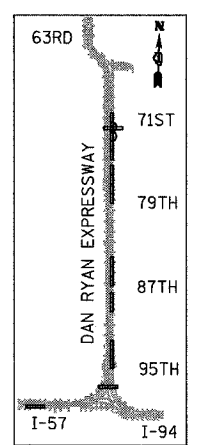
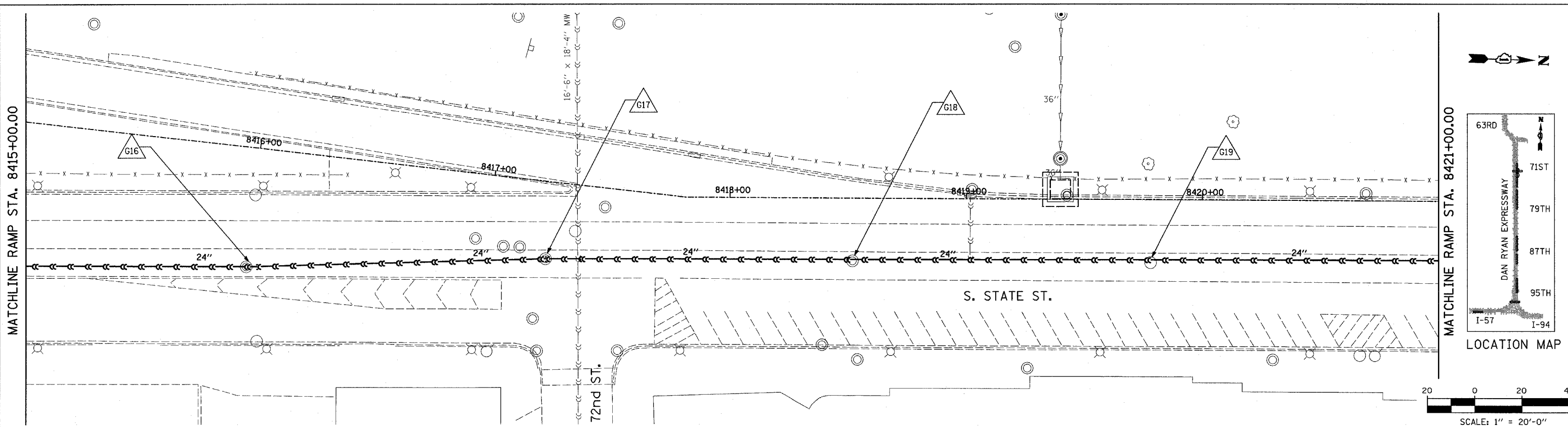
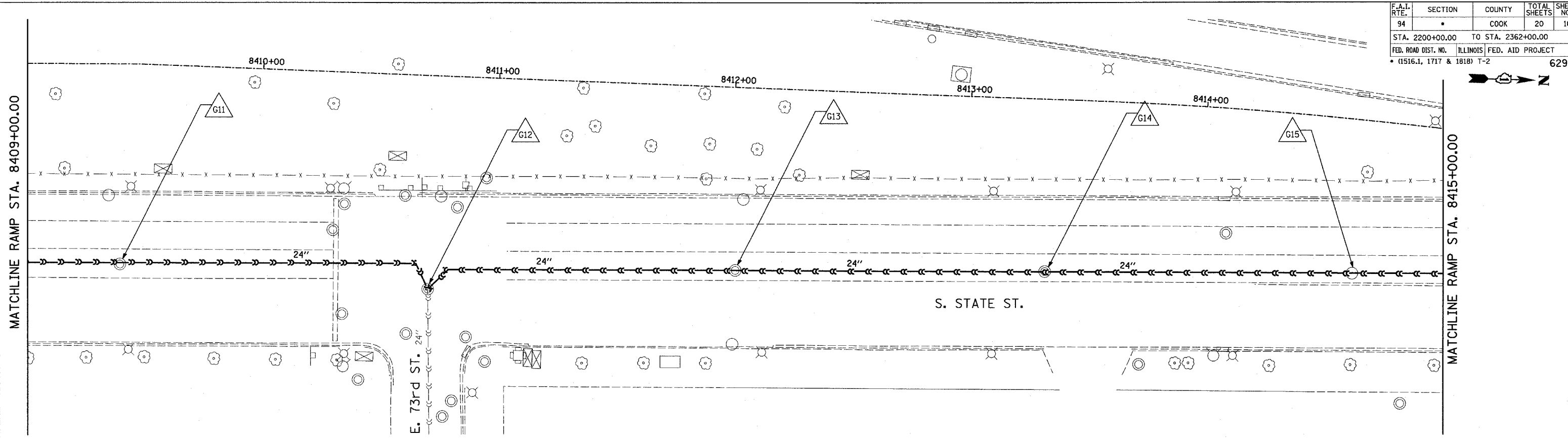


| | | | | |
|---------------------------|---------|---------------------------|--------------|-----------|
| F.A.I. RTE. | SECTION | COUNTY | TOTAL SHEETS | SHEET NO. |
| 94 | | COOK | 20 | 16 |
| STA. 2200+00.00 | | TO STA. 2362+00.00 | | |
| FED. ROAD DIST. NO. | | ILLINOIS FED. AID PROJECT | | |
| (1516.1, 1717 & 1818) T-2 | | | | 62936 |



- LEGEND:**
- EXISTING COMBINED SEWER
 - - - EXISTING COMBINED SEWER TO BE TELEVIEWED
 - XY MANHOLE STRUCTURE NO.

| REVISIONS | |
|-----------|------|
| NAME | DATE |
| | |
| | |
| | |
| | |
| | |
| | |
| | |
| | |
| | |
| | |

ILLINOIS DEPARTMENT OF TRANSPORTATION
 F.A.I. 94 (DAN RYAN EXPRESSWAY)

**SEWER TELEVIEWING
 75TH-71ST C-D RAMP**

SCALE: 1"=20'-0"
 DATE: APRIL 15, 2005

DRAWN BY: MG, AMB
 CHECKED BY: TGB

TYLIN INTERNATIONAL

I:\02373\road\civil\revit\ashl\3.dwg
 4/14/2005 9:45:34 AM