

INDEX OF SHEETS

FOR INDEX OF SHEETS, SEE SHEET NO. 2

PROJECT LOCATED IN THE CITY OF CHICAGO

**STATE OF ILLINOIS
DEPARTMENT OF TRANSPORTATION
DIVISION OF HIGHWAYS**

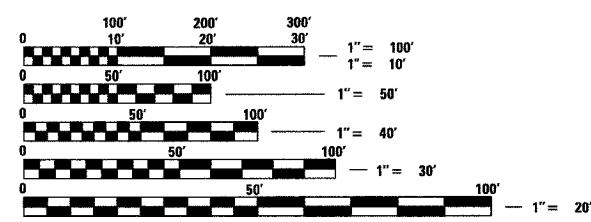
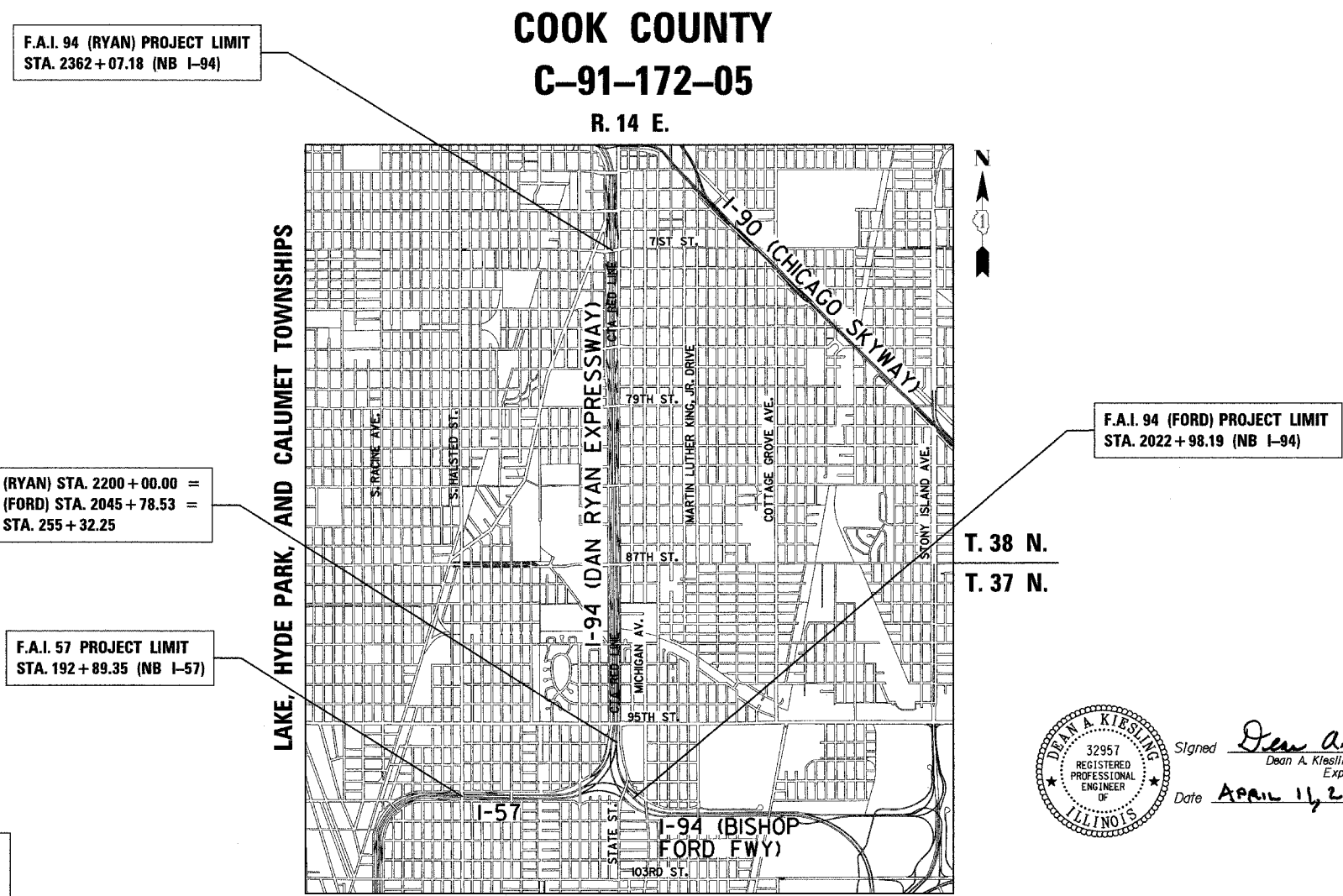
PROPOSED HIGHWAY PLANS

**F.A.I. ROUTE 94 (DAN RYAN EXPRESSWAY) (I-94)
SECTION (1516.1, 1717 & 1818) T-2
71ST STREET TO I-57 (NB RAMPS, C-D'S, AND RETAINING WALLS)
SEWER TELEVISIONING - NB DIRECTION
PROJECT: - -**

F.A.I. RTE.	SECTION	COUNTY	TOTAL SHEETS	SHEET NO.
94		COOK	20	1
FED. ROAD DIST. NO. ILLINOIS FED. AID PROJECT				
D-91-421-01 (1516.1, 1717 & 1818) T-2 62936				



LOCATION OF SECTION INDICATED THUS: -



FULL SIZE PLANS HAVE BEEN PREPARED USING STANDARD ENGINEERING SCALES; REDUCED SIZED PLANS WILL NOT CONFORM TO STANDARD SCALES. IN MAKING MEASUREMENTS ON REDUCED PLANS, THE ABOVE SCALES MAY BE USED

DIGGER:
CHICAGO UTILITY ALERT NETWORK
(312) 744-7000

CTA CONTACT:
MARVIN A. WATSON,
GENERAL MANAGER, CONSTRUCTION
(312) 681-3860

CONTRACT NO. 62936

LOCATION MAP
GROSS LENGTH OF PROJECT = 24730.4 FT. = 4.684 MI.
NET LENGTH OF PROJECT = 24730.4 FT. = 4.684 MI.
MAP SCALE: 1" = 1/2 MILE

Signed *Dean A. Klesling*
Dean A. Klesling, P.E., Ill. Lic. No. 32957
Expires 11-30-2008
Date **April 11, 2005**



STATE OF ILLINOIS
DEPARTMENT OF TRANSPORTATION
DIVISION OF HIGHWAYS

SUBMITTED April 8, 2005
Dina O'Keefe HP DISTRICT ENGINEER
May 13, 2005
Mike Hine ENGINEER OF DESIGN AND ENVIRONMENT
May 13, 2005
Victor Moderski DIRECTOR, DIVISION OF HIGHWAYS

CONTRACT 17E

TYLIN INTERNATIONAL
PRINTED BY THE AUTHORITY OF THE STATE OF ILLINOIS

DISTRICT ONE DESIGN / PROJECT MANAGER:
BRIAN KUTTAB (847) 705 - 4431

GENERAL NOTES:

- UTILITY LOCATIONS SHOWN ON THESE PLANS MAY NOT BE CORRECT OR COMPLETE. THE CONTRACTOR SHALL COORDINATE CONSTRUCTION ACTIVITIES WITH THE RESPECTIVE UTILITIES OF THE CITY OF CHICAGO. BEFORE STARTING ANY EXCAVATION, THE CONTRACTOR SHALL CALL THE CHICAGO UTILITY ALERT NETWORK AT (312) 744-7000 FOR FIELD LOCATIONS OF BURIED ELECTRIC, TELEPHONE, CABLE, AND GAS FACILITIES (48 HOURS NOTIFICATION IS REQUIRED). CONTACT THE CHICAGO DEPARTMENT OF WATER MANAGEMENT PERMIT SECTION AT (312) 747-7893 FOR WATER AND SEWER LOCATIONS.
- THE CONTRACTOR SHALL NOT SET UP A YARD OR FIELD OFFICE ON IDOT PROPERTY WITHOUT WRITTEN PERMISSION FROM IDOT.
- THE CONTRACTOR SHALL TAKE ALL NECESSARY SAFETY PRECAUTIONS TO PROTECT AND PROVIDE ACCESS TO ADJUTING PROPERTY, UTILITIES, PEDESTRIANS, AND VEHICULAR TRAFFIC.
- NIGHT OPERATIONS: WHEN ARTIFICIAL LIGHTING IS UTILIZED IN NIGHT OPERATIONS, THE CONTRACTOR SHALL EXERCISE THE UTMOST PRECAUTION IN PREVENTING ADVERSE VISIBILITY TO THE MOTORING PUBLIC AS WELL AS THE ADJOINING RESIDENTIAL AREAS.
- SEE SPECIAL PROVISIONS FOR INTERIM COMPLETION DATES. SEWER TELEVISION IS REQUIRED BEFORE CONSTRUCTION BEGINS IN CONTRACT 62694. THE SECOND TELEVISION IS REQUIRED WHEN CONTRACT 62694 COMPLETES WORK IN A GIVEN STAGE. THIS CONTRACT HAS THE SAME COMPLETION DATE AS CONTRACT 62694.
- HEAVY CLEANING OF EXISTING COMBINED SEWERS SHALL BE PAID FOR AS "CLEANING EXISTING SANITARY SEWERS".
- THE CONTRACTOR SHALL CONTACT MWRD AT 312-751-5600 FOR NECESSARY WORK REQUIREMENTS AND PERMITS BEFORE ANY WORK CAN BEGIN ON 72ND STREET CROSSING.

SEWER TELEVISION AND CLEANING SCHEDULE

LETTER	RAMP/STREET	BEGIN STRUCTURE NUMBER	END STRUCTURE NUMBER	TOTAL LENGTH TO BE TELEVISIONED (FT)	TOTAL LENGTH TO BE CLEANED (FT)
A	HALSTED ENTRANCE RAMP	A1	A3	641	321
B	97TH STREET CROSSING	B1	B2	1232	616
C	95TH ENTRANCE RAMP	C1	C13	1347	674
D	87TH EXIT RAMP	D1	D6	1011	506
E	87TH ENTRANCE RAMP	E1	E8	1334	667
F	79TH-76TH C-D RAMP	F1	F17	1944	972
G	75TH-71ST C-D RAMP	G1	G21	2671	1336
H	72ND STREET CROSSING(MWRD)	H1	H3	824	412
SUBTOTAL				11004	
TAPED TWICE -BEFORE AND AFTER CONSTRUCTION				x2	
TOTAL				22008	5504

GENERAL NOTES: CITY OF CHICAGO

- A PERMIT FROM THE DEPARTMENT OF WATER MANAGEMENT IS REQUIRED FOR ALL UNDERGROUND WORK INCLUDING TELEVISION SURVEYS, CLEANING, LINING, AND INSPECTIONS. THE DEPARTMENT OF WATER MANAGEMENT'S PERMIT MUST BE OBTAINED BY A LICENSED SEWER DRAIN LAYER PRIOR TO START OF CONSTRUCTION. THE LICENSED SEWER CONTRACTOR/ SUBCONTRACTOR MUST SUBMIT TWO SETS OF PLANS APPROVED BY THE DEPARTMENT OF WATER MANAGEMENT FOR THE ISSUANCE OF THE SEWER PERMIT TO BUREAU OF ENGINEERING SERVICES-SEWER SECTION, JARDINE PURIFICATION PLANT, EL+5L, ROOM 313, 1000 E. OHIO ST., CHICAGO, IL 60611. INSPECTION WILL BE PROVIDED BY THE DEPARTMENT OF WATER MANAGEMENT.
- IN CASE OF DAMAGE TO CITY OF CHICAGO SEWERS, PRIVATE AND PUBLIC DRAINS, SEWER STRUCTURES AND/OR BENCH MONUMENTS, THE CONTRACTOR SHALL IMMEDIATELY CONTACT THE DEPARTMENT OF WATER MANAGEMENT AT (312) 744-0409 OR (312) 744-0408.
- IN LOCATIONS WHERE THE MAIN SEWERS, DRAINAGE STRUCTURES, PUBLIC, AND PRIVATE DRAIN CONNECTIONS ARE DISTURBED OR DAMAGED DURING TELEVISION BY THE CONTRACTOR, IT WILL BE THE CONTRACTOR'S RESPONSIBILITY TO RESTORE AND REPLACE THE DAMAGED FACILITIES AT HIS/HER OWN EXPENSE TO THE SATISFACTION OF THE DEPARTMENT OF WATER MANAGEMENT. THE SEWER FLOWS MUST BE MAINTAINED AT ALL TIMES.
- THE SEWER UNIT OF THE DEPARTMENT OF WATER MANAGEMENT MUST BE NOTIFIED AT LEAST 48 HOURS IN ADVANCE OF CONSTRUCTION, WITH THE NAME AND TELEPHONE NUMBER OF THE RESIDENT ENGINEER WHO COULD BE CONTACTED FOR ANY SEWER EMERGENCY.
- LOCAL ACCESS TO ALL SECONDARY STREETS MUST BE MAINTAINED. ADEQUATE PROVISION FOR PEDESTRIAN TRAFFIC MUST BE ASSURED AT ALL TIMES.
- CITY OF CHICAGO WATER VALVE VAULTS AND SEWER STRUCTURES SHALL NOT BE CLOSED, COVERED OR OTHERWISE OBSTRUCTED DURING CONSTRUCTION WITHOUT WRITTEN PERMISSION FROM THE DEPARTMENT OF WATER MANAGEMENT.

SUMMARY OF QUANTITIES

CODE NUMBER	ITEM DESCRIPTION	UNIT	FUNDING: URBAN 100% STATE Y007
67100100	MOBILIZATION	L SUM	1
70101800	TRAFFIC CONTROL AND PROTECTION (SPECIAL)	L SUM	1
X0322787	CLEANING EXISTING SANITARY SEWERS	FOOT	5504
X0322256	TEMPORARY INFORMATION SIGNING	SQ FT	50
X7015000	CHANGEABLE MESSAGE SIGN	CAL MO	12
XX004812	VIDEOTAPING OF SEWERS	FOOT	22008
Z0048665	RAILROAD PROTECTIVE LIABILITY INSURANCE	L SUM	1

* SPECIALTY ITEMS

IDOT HIGHWAY STANDARDS

STANDARD	DESCRIPTION
701601-04	URBAN LANE CLOSURE, MULTILANE, 1W OR 2W WITH NONTRAVERSABLE MEDIAN
701606-04	URBAN LANE CLOSURE, MULTILANE, 2W WITH MOUNTABLE MEDIAN
701701-04	URBAN LANE CLOSURE, MULTILANE INTERSECTION
702001-05	TRAFFIC CONTROL DEVICES

INDEX OF SHEETS

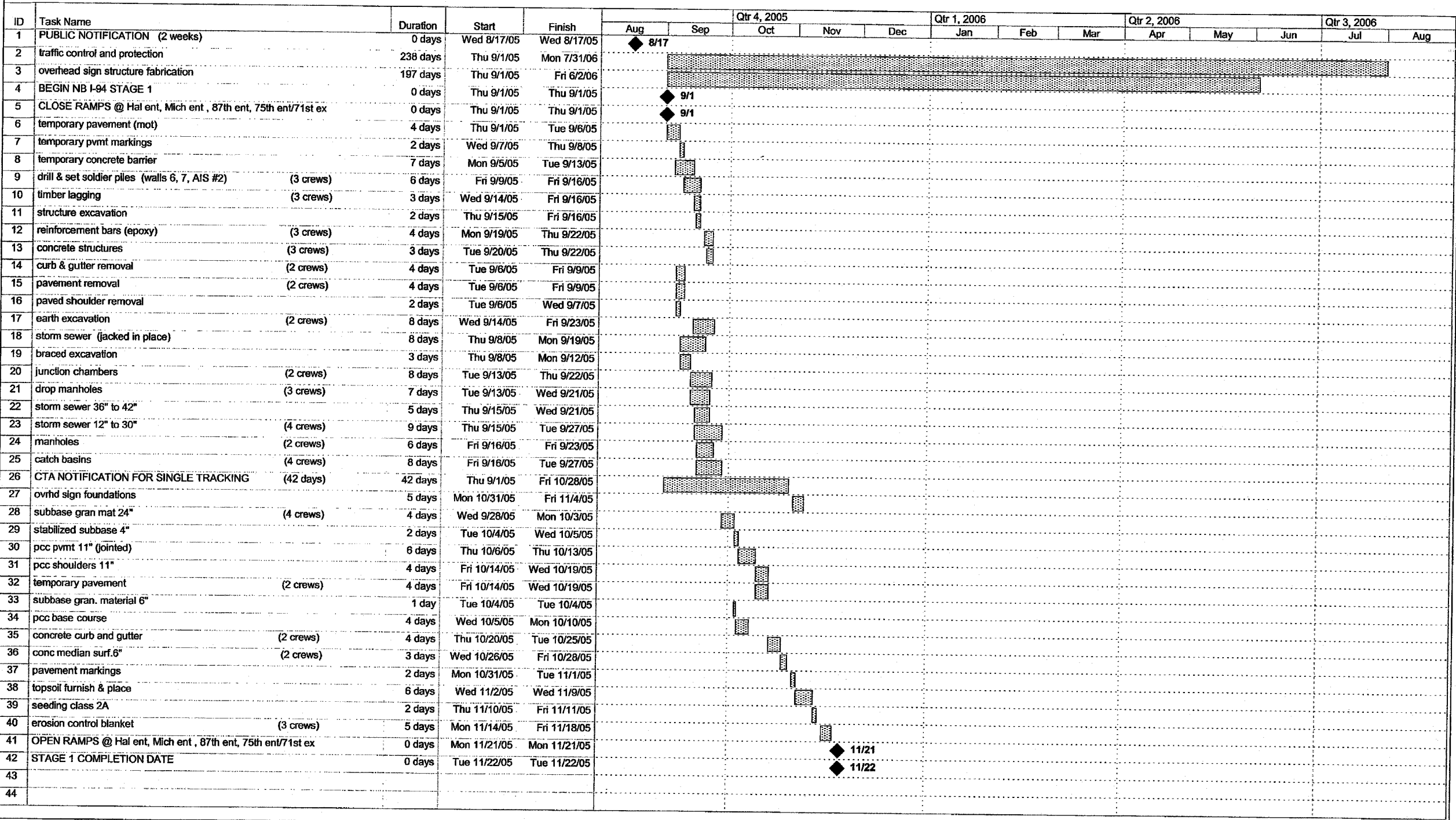
SHEET	DESCRIPTION
1	COVER SHEET
2	GENERAL NOTES, SUMMARY OF QUANTITIES, SEWER TELEVISION SCHEDULE, INDEX OF STATE STANDARDS, INDEX OF SHEETS
3-4	CONTRACT 62694 (17A) CONSTRUCTION SCHEDULE
5	SEWER TELEVISION KEY PLAN
6-18	SEWER TELEVISION PLANS
19	IDOT DISTRICT 1 DETAIL TC-17 (TRAFFIC CONTROL DETAILS FOR FREEWAY SHOULDER CLOSURES PARTIAL RAMP CLOSURES)
20	IDOT DISTRICT 1 DETAIL TC-22 (TEMPORARY INFORMATION SIGNING)

TYLIN INTERNATIONAL

REVISIONS		ILLINOIS DEPARTMENT OF TRANSPORTATION F.A.I. 94 (DAN RYAN EXPRESSWAY)
NAME	DATE	
		GENERAL NOTES, SUMMARY OF QUANTITIES, SCHEDULE OF QUANTITIES, & INDEX OF STATE STANDARDS SCALE: NONE DRAWN BY: AMB DATE: APRIL 15, 2005 CHECKED BY: TGB

4/14/2005 9:49:24 AM
C:\WORK\2005\PROJECTS\94\9402\9402.DWG

CONTRACT 62694



Project: 17A construction schedule
Date: Thu 3/17/05

Task: [Pattern] Progress
Split: [Pattern] Milestone

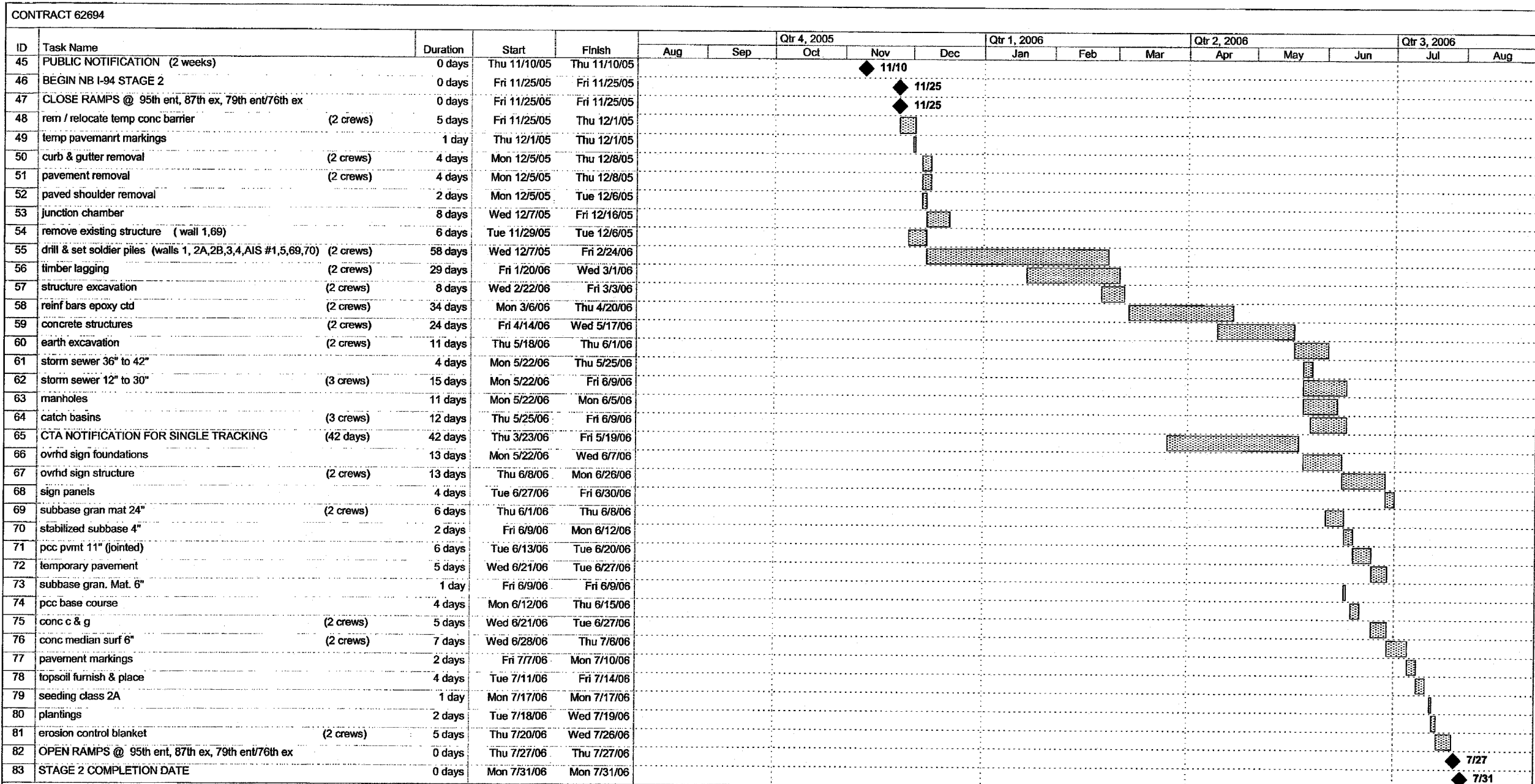
Summary: [Pattern] External Tasks
Project Summary: [Pattern] External Milestone

Deadline: [Pattern]

FOR INFORMATION ONLY

REVISIONS	
NAME	DATE

4/14/2005 9:42:55 AM



Project: 17A construction schedule
 Date: Thu 3/17/05

Task: [Hatched Box] Progress
 Split: [Dotted Box] Milestone

Summary: [Solid Box] External Tasks [Hatched Box] Deadline
 Project Summary: [Solid Box] External Milestone [Diamond]

FOR INFORMATION ONLY

REVISIONS	
NAME	DATE

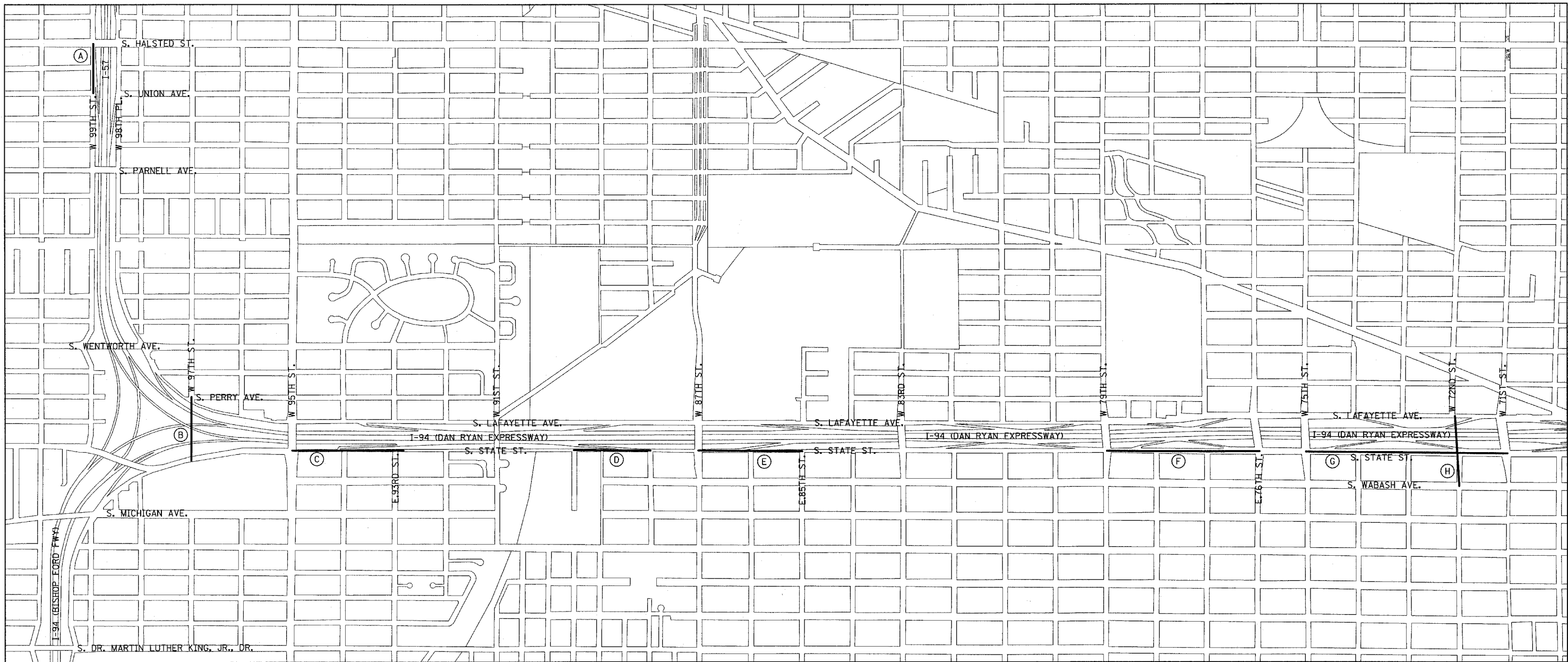
ILLINOIS DEPARTMENT OF TRANSPORTATION
 F.A.I. 94 (DAN RYAN EXPRESSWAY)

SUGGESTED CONSTRUCTION SEQUENCE
 CONTRACT 62694 (17A): STAGE 2

SCALE: NONE
 DATE: APRIL 15, 2005

DRAWN BY: MPG
 CHECKED BY: MAG

P:\0237\3\000\07\9\0517\0517.rvt (12/02/05) 9:42:57 AM



SEWER TELEVISION LOCATIONS

LEGEND:
 — LIMITS OF SEWER TELEVISION

LOCATION		
LETTER	RAMP/STREET	DESCRIPTION
A	HALSTED ENTRANCE RAMP	W. 99TH ST - HALSTED ST. TO UNION AVE.
B	97TH STREET CROSSING	W. 97TH ST. & S. PERRY AVE. TO E. 97TH ST. & S. STATE ST.
C	95TH ENTRANCE RAMP	S. STATE STREET - 95TH ST. TO 93RD ST.
D	87TH EXIT RAMP	S. STATE STREET - 89TH ST. (PRIVATE) TO 88TH ST.
E	87TH ENTRANCE RAMP	S. STATE STREET - 87TH ST. TO 85TH ST.
F	79TH-76TH C-D RAMP	S. STATE STREET - 79TH ST. TO 76TH ST.
G	75TH-71ST C-D RAMP	S. STATE STREET - 75TH ST. TO 71ST ST.
H	72ND STREET CROSSING (MWRD)	W. 72ND ST. & S. LAFAYETTE AVE. TO E. 72ND ST. & S. WABASH AVE.

NOTE:
 CONTRACTOR SHALL TELEVISION SEWER BEFORE CONSTRUCTION BEGINS AND AFTER CONSTRUCTION IS COMPLETED, FOR EACH STAGE.

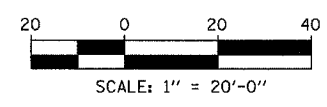
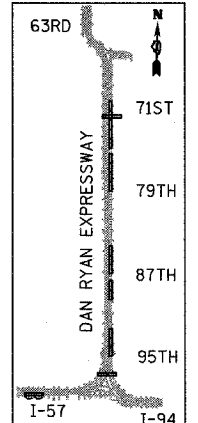
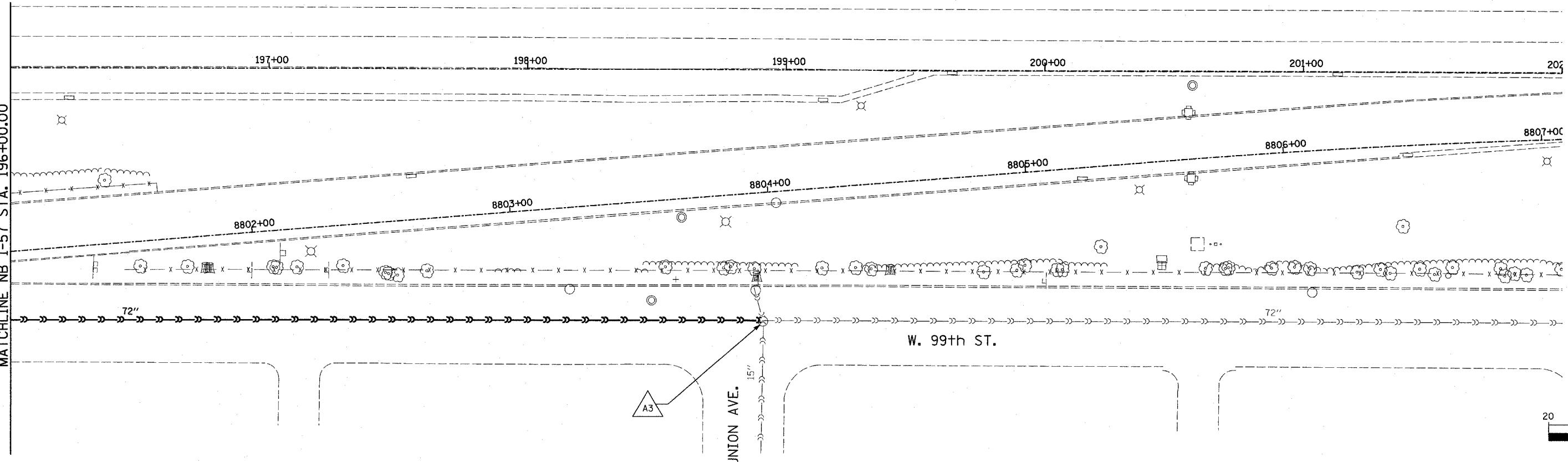
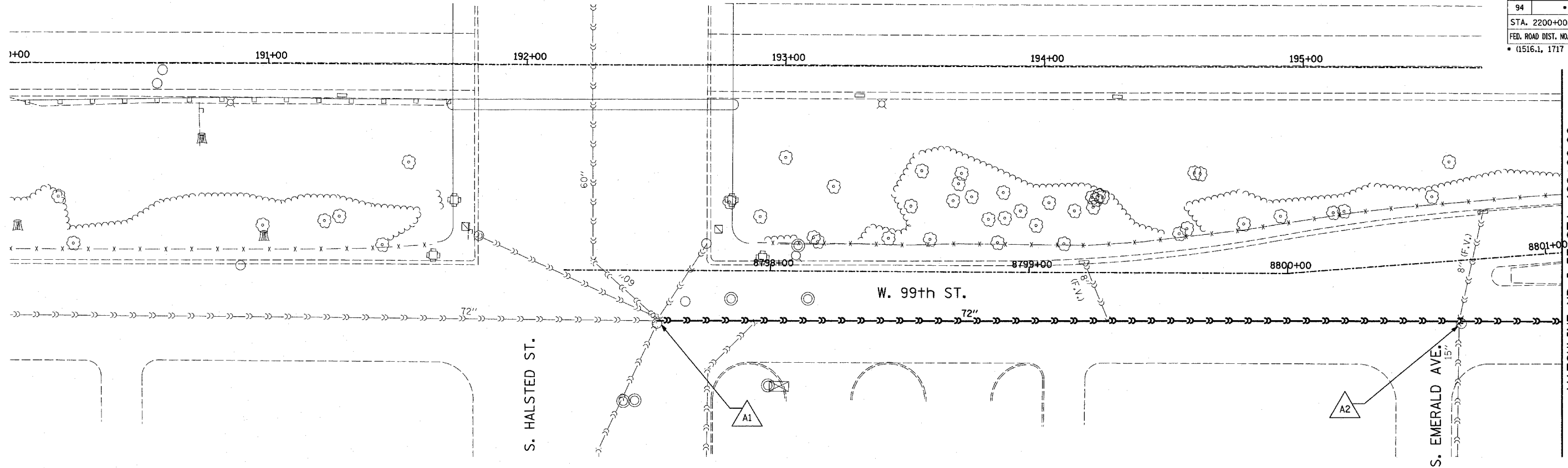
REVISIONS	
NAME	DATE

ILLINOIS DEPARTMENT OF TRANSPORTATION
 F.A.I. 94 (DAN RYAN EXPRESSWAY)
**SEWER TELEVISION
 KEY PLAN**

SCALE: NOT TO SCALE
 DATE: APRIL 15, 2005
 DRAWN BY: MPG, AMB
 CHECKED BY: PAW, TGB

4/14/2005 9:46:03 AM P:\0237\3\road\civil\rev\kpl\es10\35a.dgn

F.A.I. RTE.	SECTION	COUNTY	TOTAL SHEETS	SHEET NO.
94		COOK	20	6
STA. 2200+00.00		TO STA. 2362+00.00		
FED. ROAD DIST. NO.	ILLINOIS	FED. AID PROJECT		
* (1516.1, 1717 & 1818) T-2		62936		



- LEGEND:**
- EXISTING COMBINED SEWER
 - - - EXISTING COMBINED SEWER TO BE TELEVIEWED
 - XY MANHOLE STRUCTURE NO.

REVISIONS	
NAME	DATE

ILLINOIS DEPARTMENT OF TRANSPORTATION
 F.A.I. 94 (DAN RYAN EXPRESSWAY)
**SEWER TELEVIEWING
 HALSTED ENTRANCE RAMP**

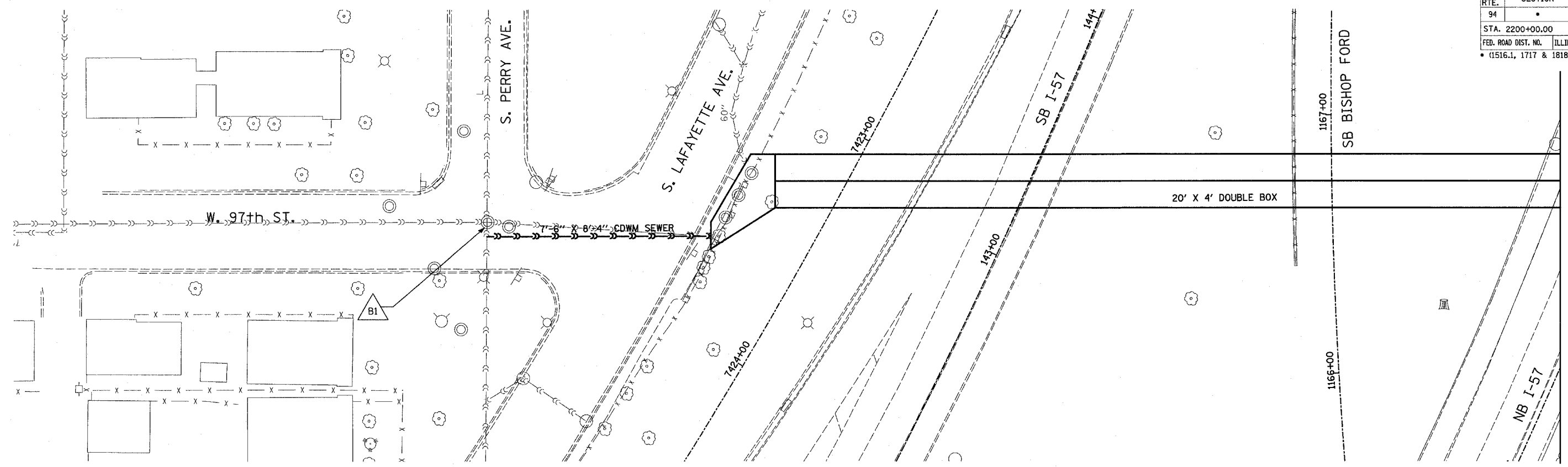
SCALE: 1"=20'-0"
 DATE: APRIL 15, 2005

DRAWN BY: DE, AMB
 CHECKED BY: TGB

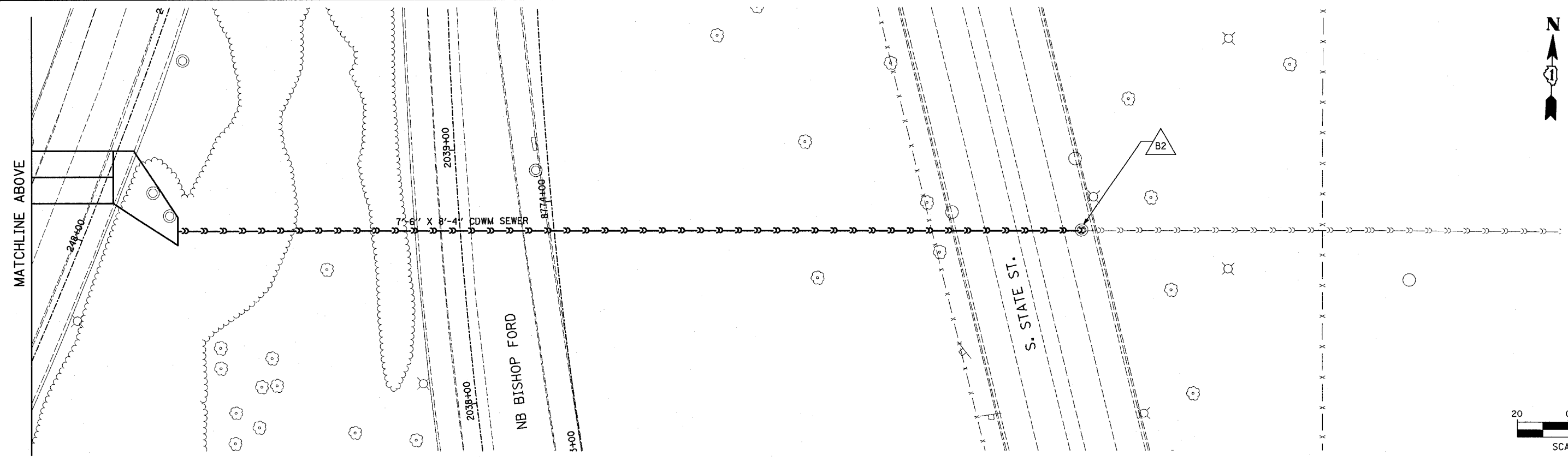
TYLIN INTERNATIONAL

P:\02373\road\civil\review\717\717_013.dwg 4/14/2005 9:45:13 AM

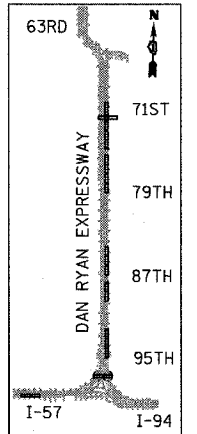
F.A.I. RTE.	SECTION	COUNTY	TOTAL SHEETS	SHEET NO.
94		COOK	20	7
STA. 2200+00.00		TO STA. 2362+00.00		
FED. ROAD DIST. NO.	ILLINOIS	FED. AID PROJECT		
• (1516.1, 1717 & 1818) T-2		62936		



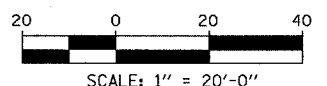
MATCHLINE BELOW



MATCHLINE ABOVE



LOCATION MAP



- LEGEND:**
- >>> EXISTING COMBINED SEWER
 - >>> EXISTING COMBINED SEWER TO BE TELEVISED
 - △ XY MANHOLE STRUCTURE NO.

REVISIONS	
NAME	DATE

ILLINOIS DEPARTMENT OF TRANSPORTATION
 F.A.I. 94 (DAN RYAN EXPRESSWAY)
SEWER TELEVISION
97TH STREET CROSSING

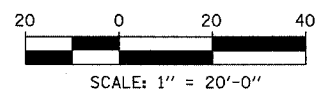
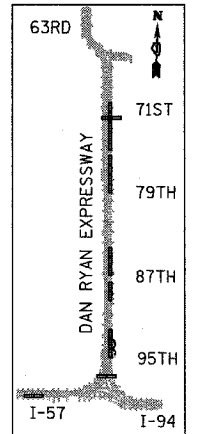
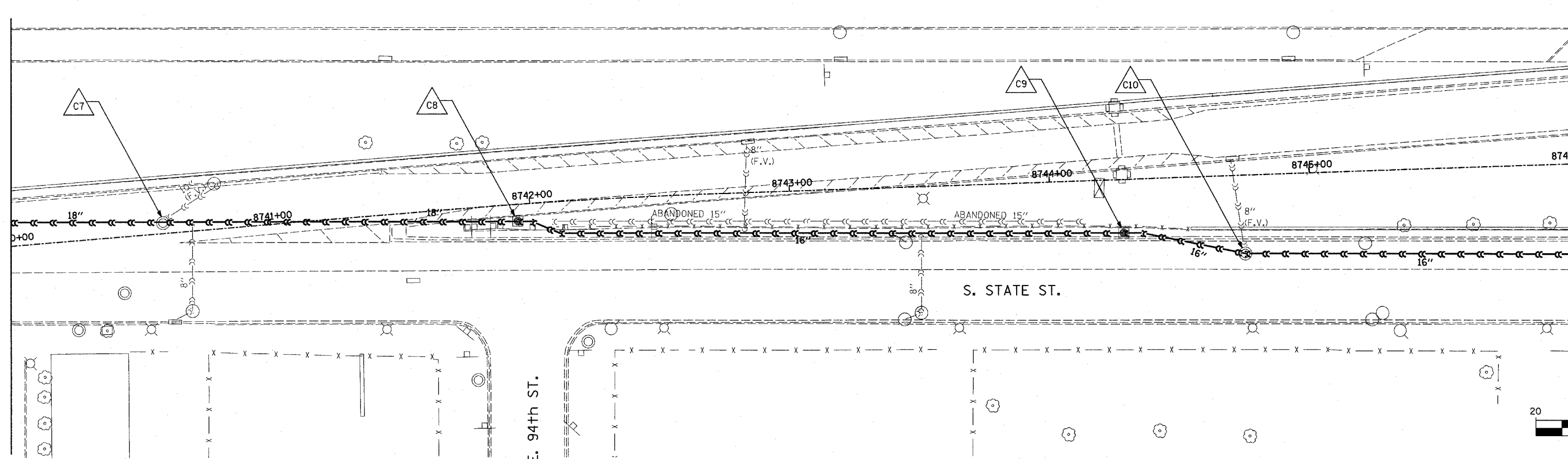
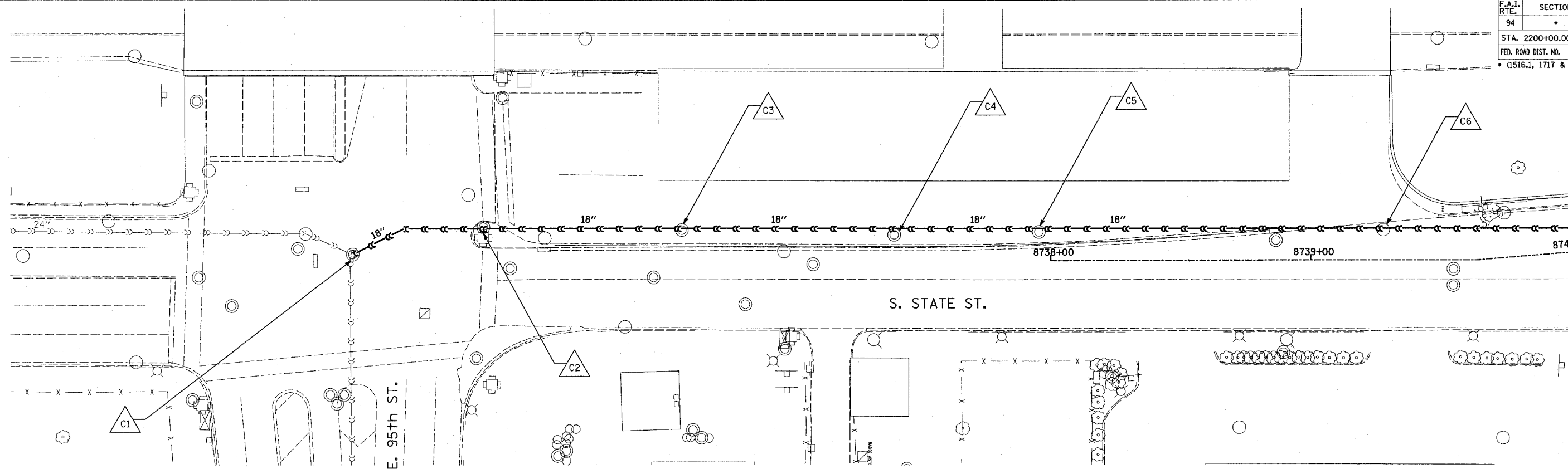
SCALE: 1"=20'-0"
 DATE: APRIL 15, 2005

DRAWN BY: DE, AMB
 CHECKED BY: TGB

TYLIN INTERNATIONAL

P:\0237\3\road\07\Rev\17\1023.dwg 4/14/2005 9:43:53 AM

F.A.I. RTE.	SECTION	COUNTY	TOTAL SHEETS	SHEET NO.
94		COOK	20	8
STA. 2200+00.00		TO STA. 2362+00.00		
FED. ROAD DIST. NO.		ILLINOIS FED. AID PROJECT		
(1516.1, 1717 & 1818) T-2		62936		



- LEGEND:**
- — — — — EXISTING COMBINED SEWER
 - — — — — EXISTING COMBINED SEWER TO BE TELEVIEWED
 - △ XY MANHOLE STRUCTURE NO.

REVISIONS	
NAME	DATE

ILLINOIS DEPARTMENT OF TRANSPORTATION
 F.A.I. 94 (DAN RYAN EXPRESSWAY)
**SEWER TELEVIEWING
 95TH ENTRANCE RAMP**

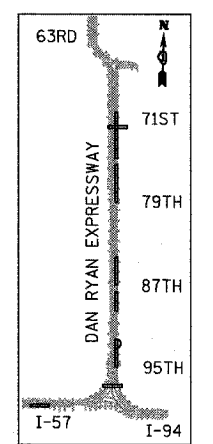
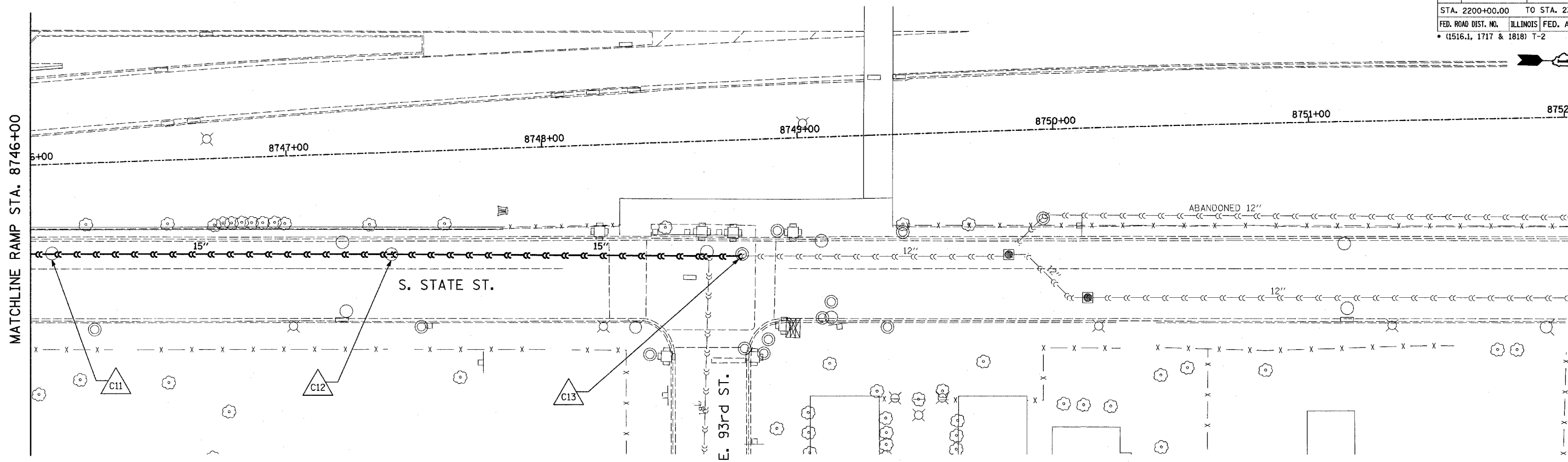
SCALE: 1"=20'-0"
 DATE: APRIL 15, 2005

DRAWN BY: DE, AMB
 CHECKED BY: TGB

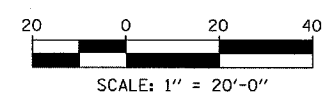
TYLIN INTERNATIONAL

P:\0237\3\road\07\rev\17\8738-8746.dwg 9:43:48 AM 4/17/2005

F.A.I. RTE.	SECTION	COUNTY	TOTAL SHEETS	SHEET NO.
94	•	COOK	20	9
STA. 2200+00.00		TO STA. 2362+00.00		
FED. ROAD DIST. NO.		ILLINOIS FED. AID PROJECT		
(1516.1, 1717 & 1818) T-2				62936



LOCATION MAP



- LEGEND:**
- EXISTING COMBINED SEWER
 - EXISTING COMBINED SEWER TO BE TELEVISED
 - △ XY MANHOLE STRUCTURE NO.

REVISIONS	
NAME	DATE

ILLINOIS DEPARTMENT OF TRANSPORTATION
 F.A.I. 94 (DAN RYAN EXPRESSWAY)
**SEWER TELEVISING
 95TH ENTRANCE RAMP**

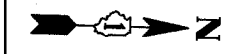
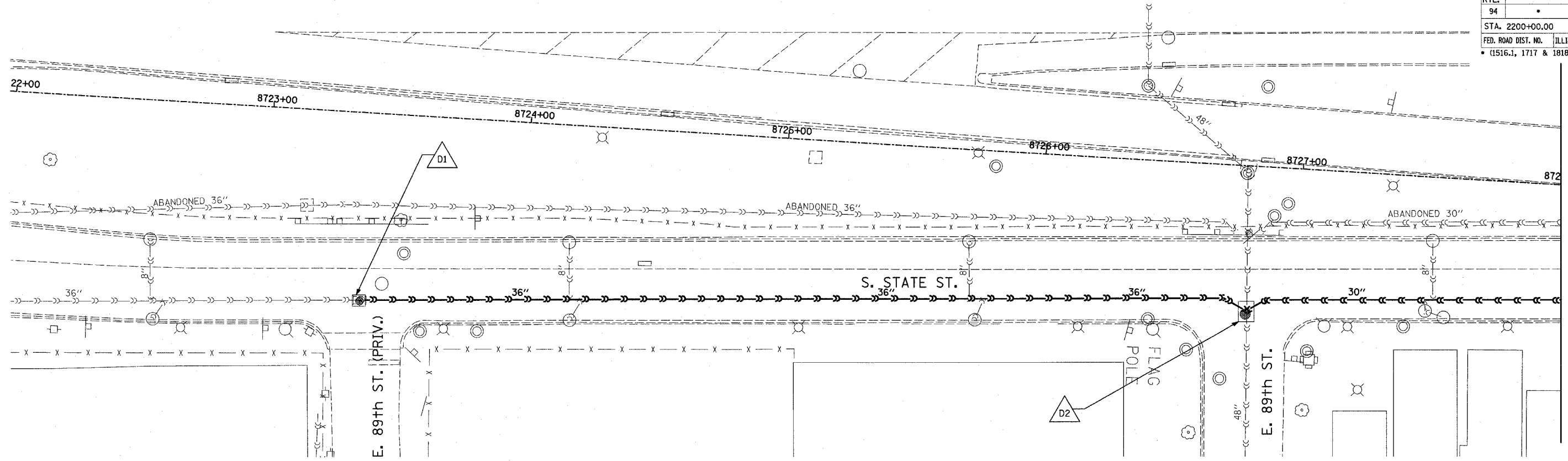
SCALE: 1"=20'-0"
 DATE: APRIL 15, 2005

DRAWN BY: DE, AMB
 CHECKED BY: TGB

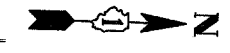
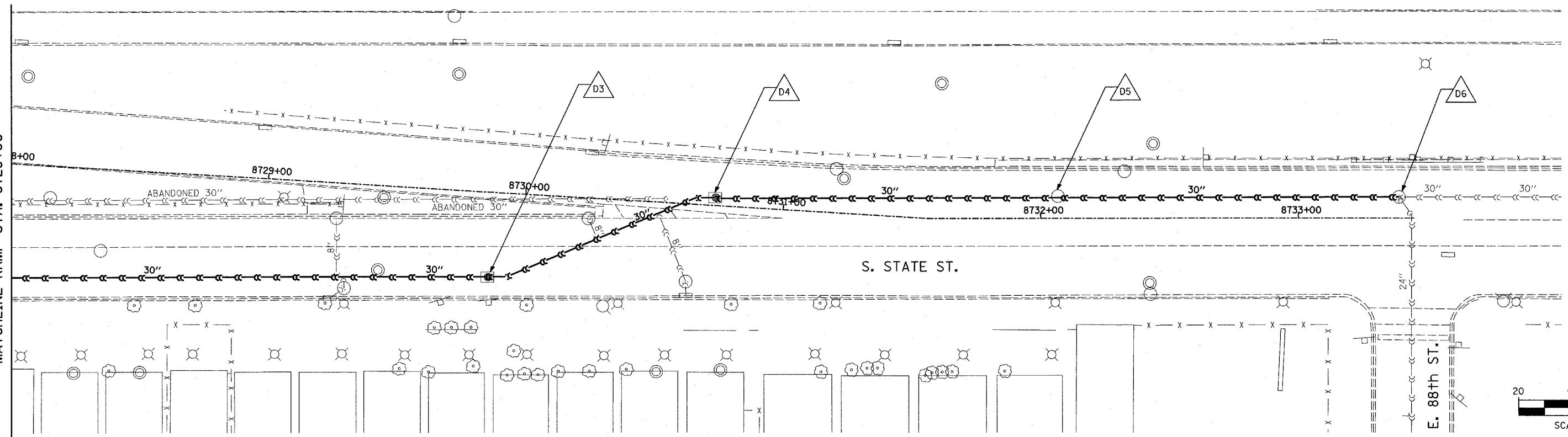
TYLIN INTERNATIONAL

D:\02373\road\94\95th\9436.dwg 4/14/2005 9:43:59 AM

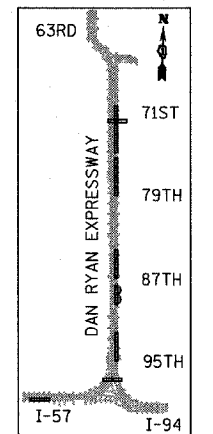
F.A.I. RTE.	SECTION	COUNTY	TOTAL SHEETS	SHEET NO.
94		COOK	20	10
STA. 2200+00.00 TO STA. 2362+00.00		ILLINOIS FED. AID PROJECT		
FED. ROAD DIST. NO.		(1516.1, 1717 & 1818) T-2		
62936				



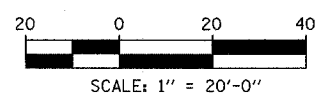
MATCHLINE RAMP STA. 8728+00



MATCHLINE RAMP STA. 8728+00



LOCATION MAP



TYLIN INTERNATIONAL

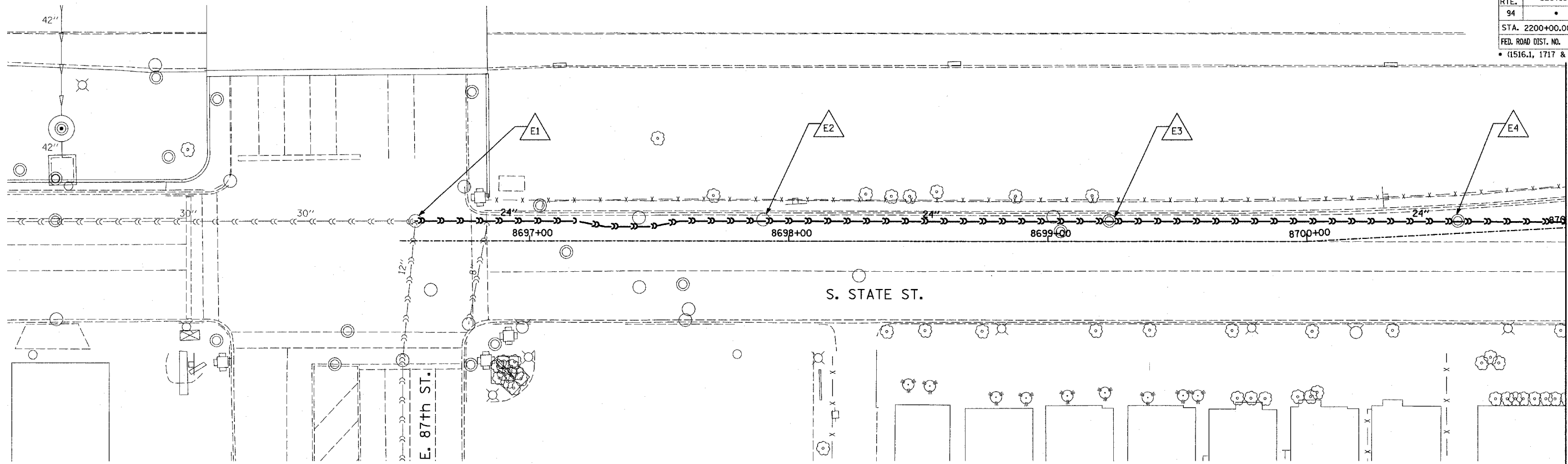
LEGEND:

- EXISTING COMBINED SEWER
- EXISTING COMBINED SEWER TO BE TELEVIEWED
- MANHOLE STRUCTURE NO.

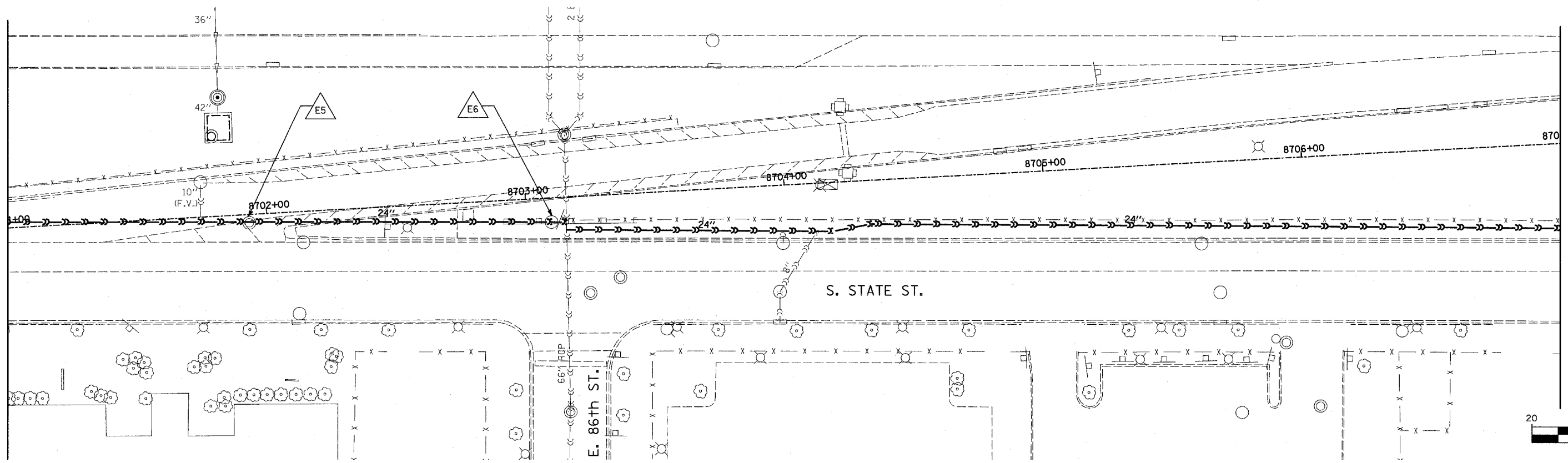
REVISIONS	
NAME	DATE

ILLINOIS DEPARTMENT OF TRANSPORTATION
F.A.I. 94 (DAN RYAN EXPRESSWAY)
SEWER TELEVISION
87TH EXIT RAMP
 SCALE: 1"=20'-0"
 DATE: APRIL 15, 2005
 DRAWN BY: DE, AMB
 CHECKED BY: TGB

P:\02373\road\94\view\est\0530a.dwg 9:44:12 AM 4/14/2005

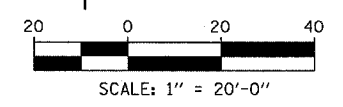
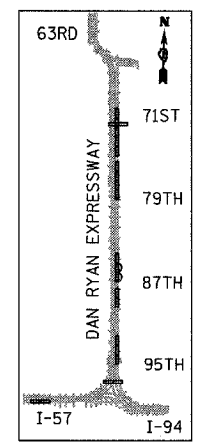


MATCHLINE RAMP STA. 8701+00



MATCHLINE RAMP STA. 8701+00

MATCHLINE RAMP STA. 8707+00



- LEGEND:**
- — — — — EXISTING COMBINED SEWER
 - — — — — EXISTING COMBINED SEWER TO BE TELEVIEWED
 - △ XY MANHOLE STRUCTURE NO.

REVISIONS	
NAME	DATE

ILLINOIS DEPARTMENT OF TRANSPORTATION
 F.A.I. 94 (DAN RYAN EXPRESSWAY)
**SEWER TELEVIEWING
 87TH ENTRANCE RAMP**

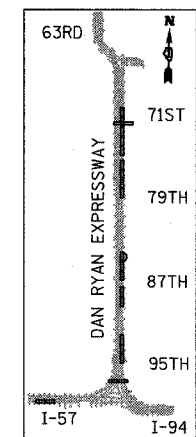
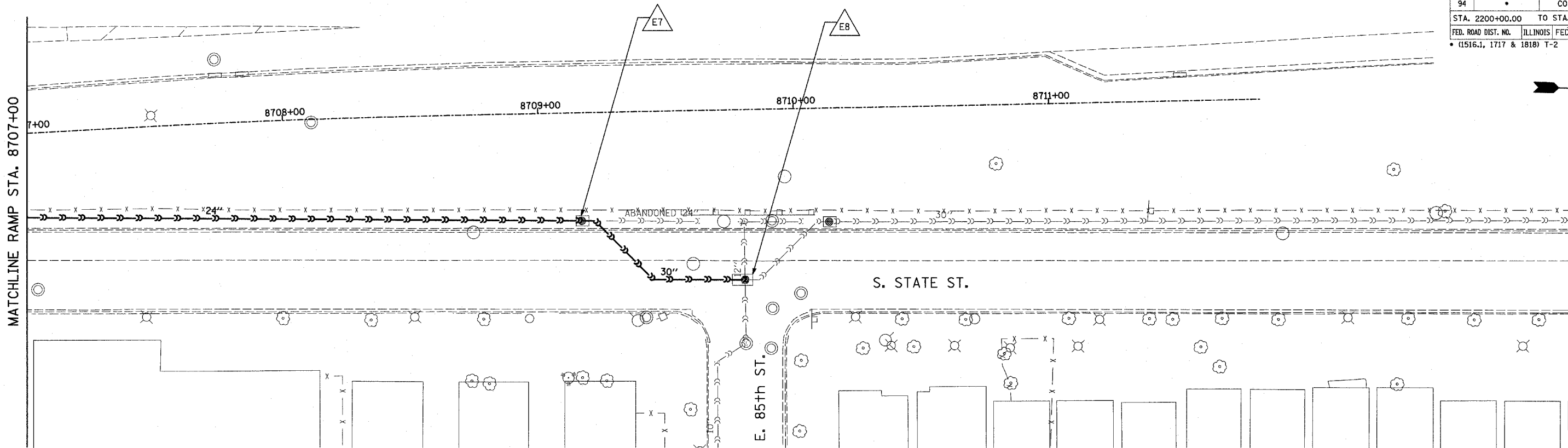
SCALE: 1"=20'-0"
 DATE: APRIL 15, 2005

DRAWN BY: DE, AMB
 CHECKED BY: TGB

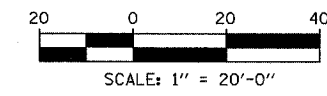
TYLIN INTERNATIONAL

4/17/2005 9:44:28 AM

F.A.I. RTE.	SECTION	COUNTY	TOTAL SHEETS	SHEET NO.
94	*	COOK	20	12
STA. 2200+00.00		TO STA. 2362+00.00		
FED. ROAD DIST. NO.	ILLINOIS	FED. AID PROJECT		
• (1516.1, 1717 & 1818) T-2		62936		



LOCATION MAP



- LEGEND:**
- EXISTING COMBINED SEWER
 - EXISTING COMBINED SEWER TO BE TELEVIEWED
 - △ XY MANHOLE STRUCTURE NO.

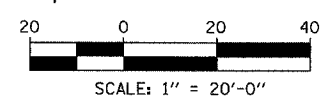
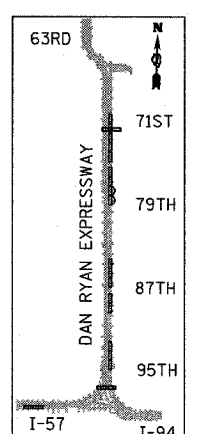
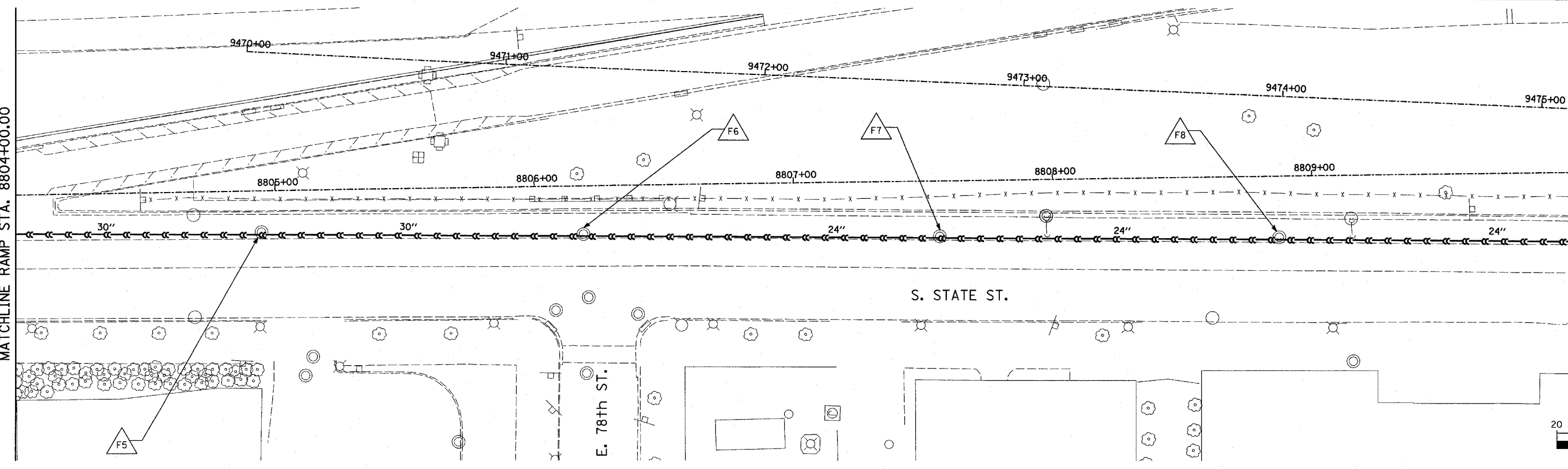
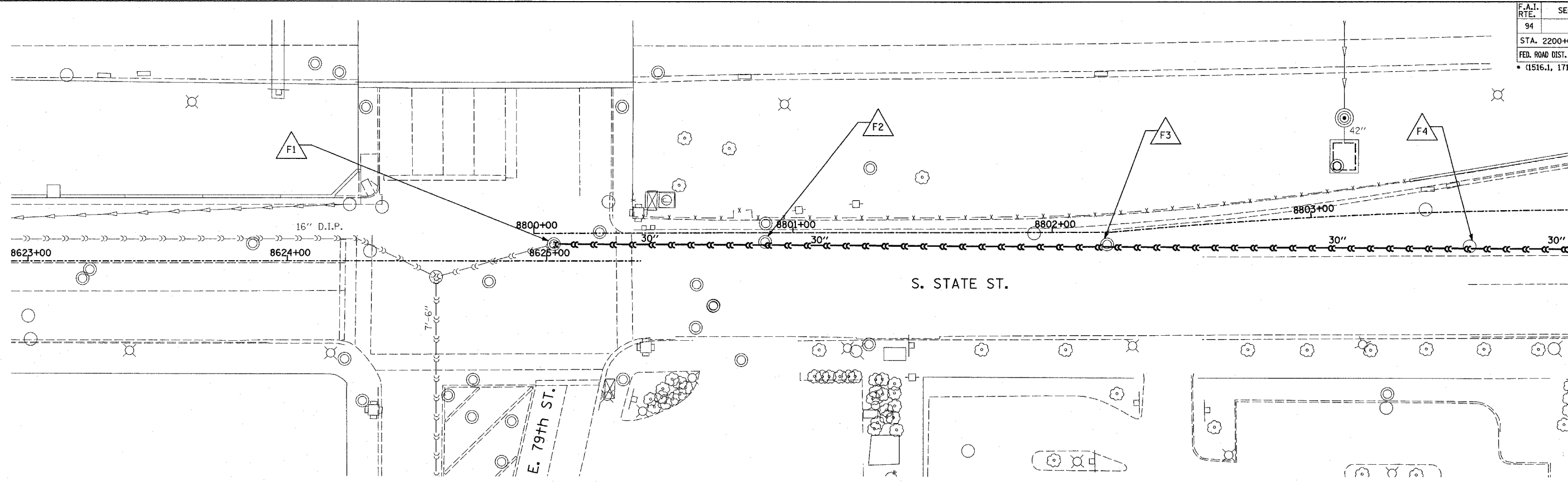
REVISIONS	
NAME	DATE

ILLINOIS DEPARTMENT OF TRANSPORTATION
 F.A.I. 94 (DAN RYAN EXPRESSWAY)
**SEWER TELEVIEWING
 87TH ENTRANCE RAMP**
 SCALE: 1"=20'-0"
 DATE: APRIL 15, 2005
 DRAWN BY: DE, AMB
 CHECKED BY: TGB

TYLIN INTERNATIONAL

P:\02373\road\01\avail\est\01_30.dgn 9:44:35 AM 4/17/2005

F.A.I. RTE.	SECTION	COUNTY	TOTAL SHEETS	SHEET NO.
94		COOK	20	13
STA. 2200+00.00		TO STA. 2362+00.00		
FED. ROAD DIST. NO.		ILLINOIS FED. AID PROJECT		
(1516.1, 1717 & 1818) T-2		62936		



TYLIN INTERNATIONAL

- LEGEND:**
- EXISTING COMBINED SEWER
 - - - EXISTING COMBINED SEWER TO BE TELEVIEWED
 - △ XY MANHOLE STRUCTURE NO.

REVISIONS	
NAME	DATE

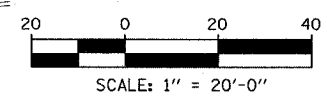
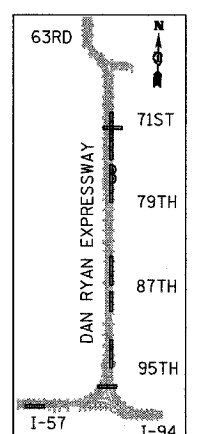
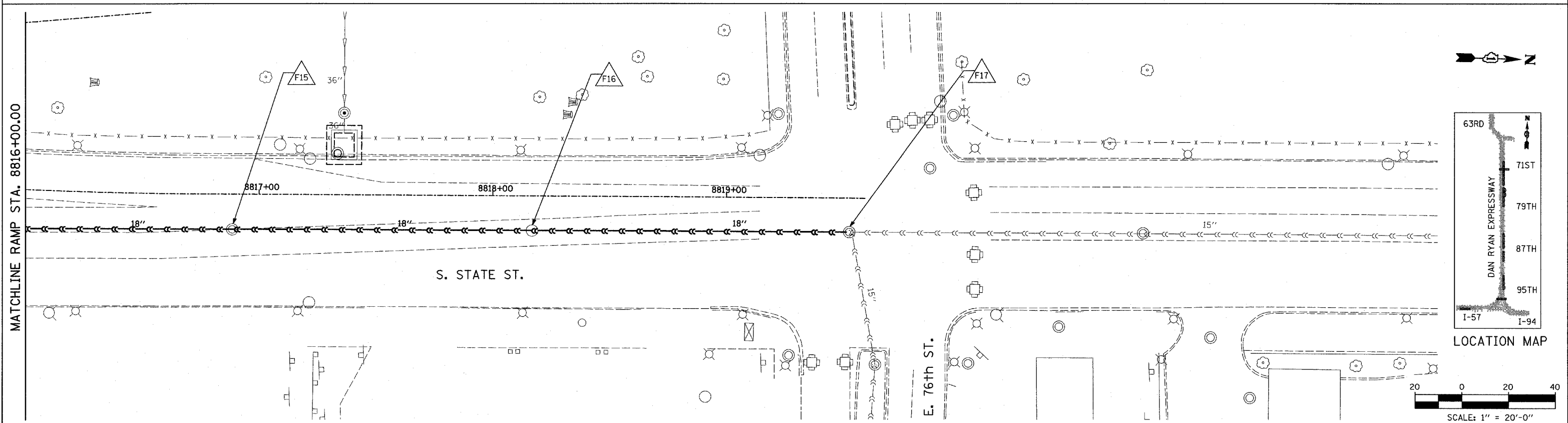
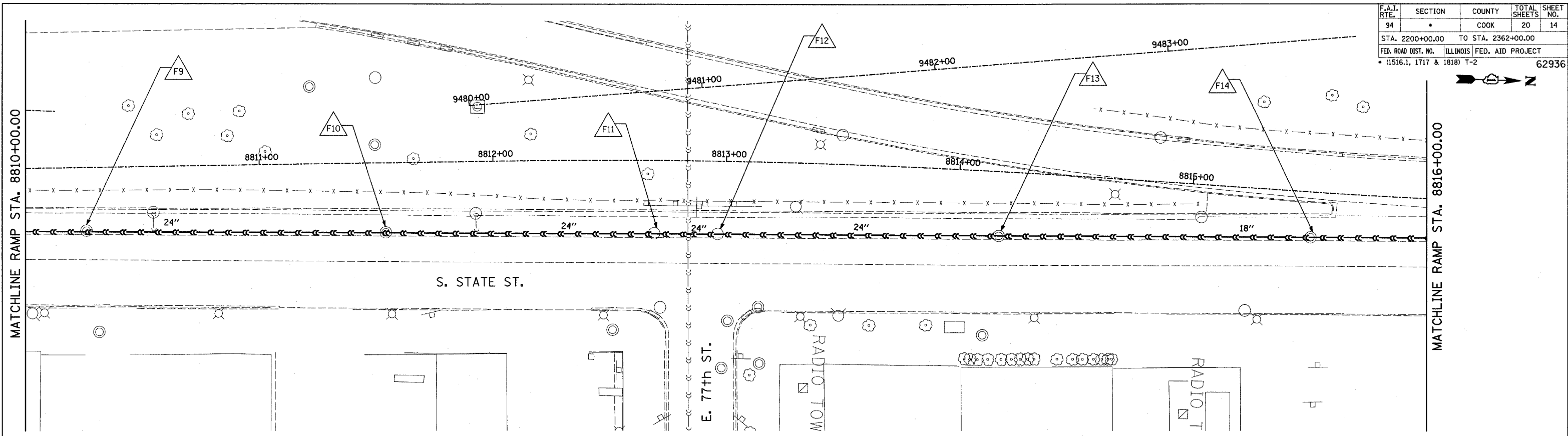
ILLINOIS DEPARTMENT OF TRANSPORTATION
 F.A.I. 94 (DAN RYAN EXPRESSWAY)
SEWER TELEVIEWING
 79TH-76TH C-D RAMP

SCALE: 1"=20'-0"
 DATE: APRIL 15, 2005

DRAWN BY: MG, AMB
 CHECKED BY: TGB

4/14/2005 9:44:48 AM

F.A.I. RTE.	SECTION	COUNTY	TOTAL SHEETS	SHEET NO.
94	*	COOK	20	14
STA. 2200+00.00		TO STA. 2362+00.00		
FED. ROAD DIST. NO.		ILLINOIS FED. AID PROJECT		
* (1516.1, 1717 & 1818) T-2		62936		



- LEGEND:**
- EXISTING COMBINED SEWER
 - EXISTING COMBINED SEWER TO BE TELEVIEWED
 - △ XY MANHOLE STRUCTURE NO.

REVISIONS	
NAME	DATE

ILLINOIS DEPARTMENT OF TRANSPORTATION
 F.A.I. 94 (DAN RYAN EXPRESSWAY)
SEWER TELEVIEWING
 79TH-76TH C-D RAMP

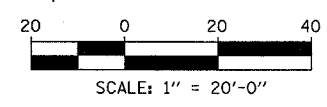
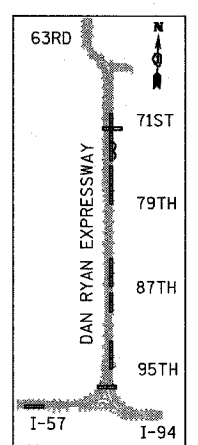
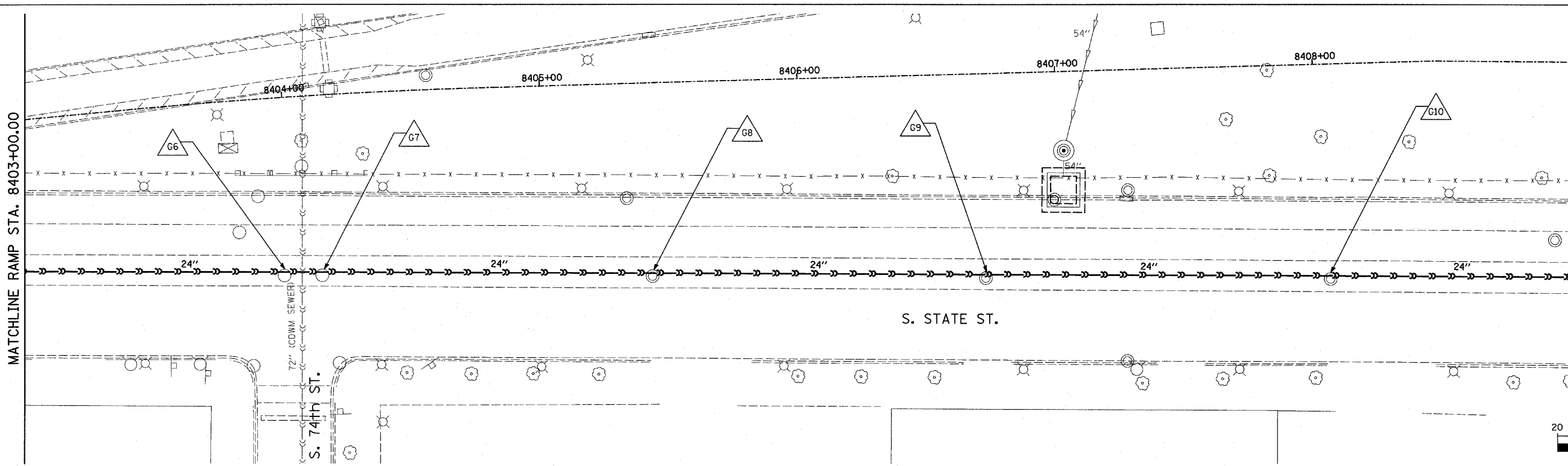
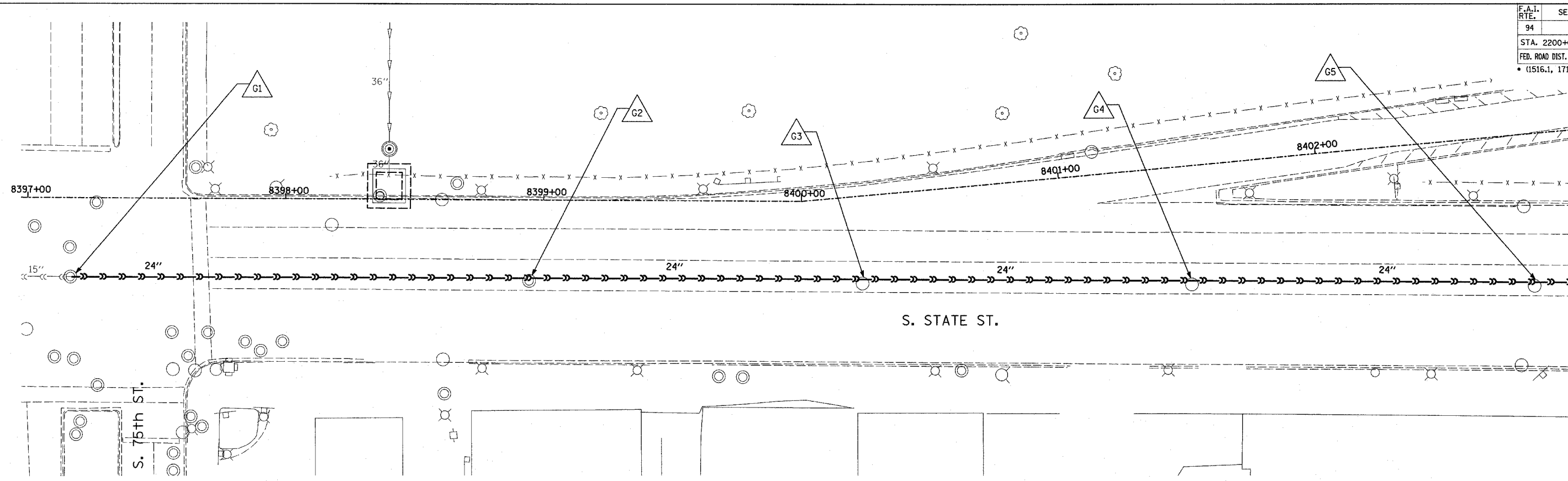
SCALE: 1"=20'-0"
 DATE: APRIL 15, 2005

DRAWN BY: MG, AMB
 CHECKED BY: TGB

TYLIN INTERNATIONAL

4/14/2005 9:45:04 AM

F.A.I. RTE.	SECTION	COUNTY	TOTAL SHEETS	SHEET NO.
94		COOK	20	15
STA. 2200+00.00 TO STA. 2362+00.00		ILLINOIS FED. AID PROJECT		
FED. ROAD DIST. NO.		• (1516.1, 1717 & 1818) T-2		
		62936		



- LEGEND:**
- EXISTING COMBINED SEWER
 - EXISTING COMBINED SEWER TO BE TELEVIEWED
 - △ XY MANHOLE STRUCTURE NO.

REVISIONS	
NAME	DATE

ILLINOIS DEPARTMENT OF TRANSPORTATION
 F.A.I. 94 (DAN RYAN EXPRESSWAY)
SEWER TELEVIEWING
 75TH-71ST C-D RAMP

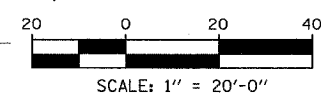
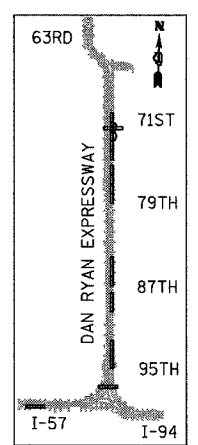
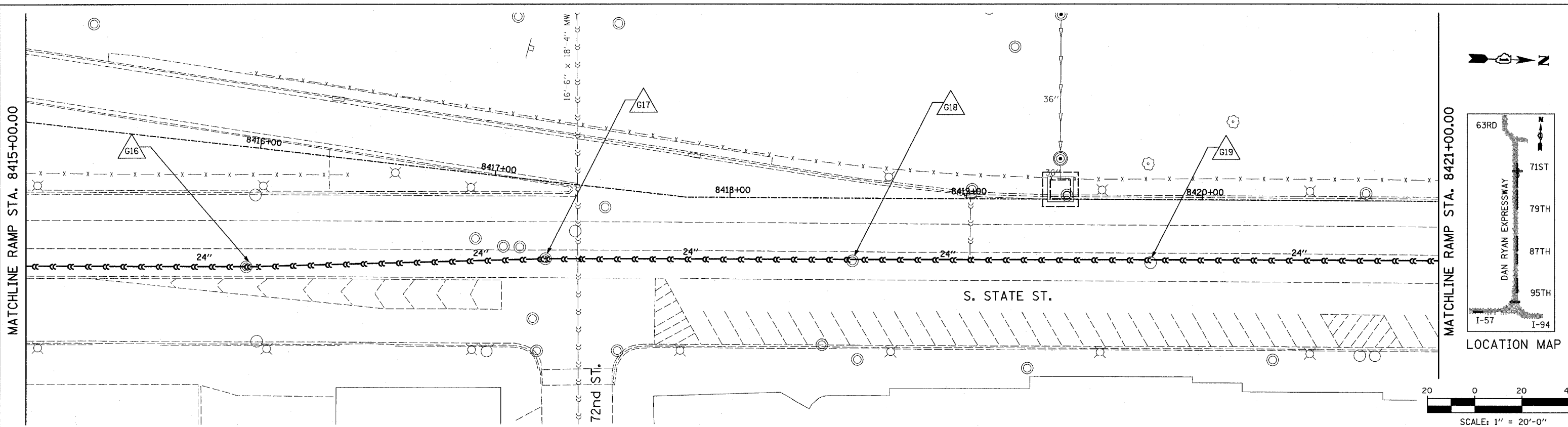
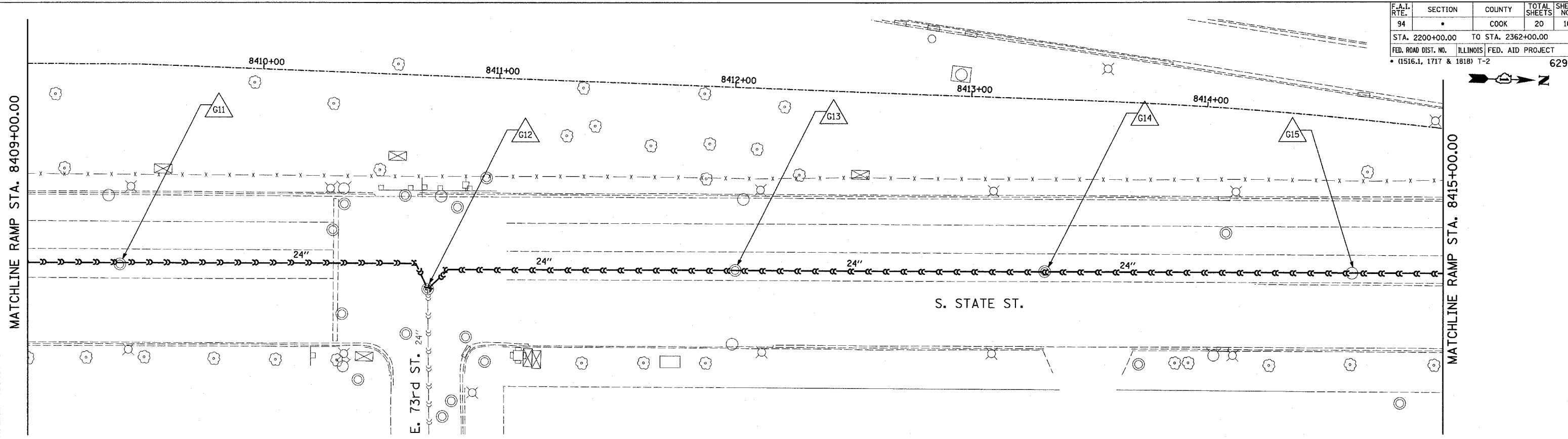
SCALE: 1"=20'-0"
 DATE: APRIL 15, 2005

DRAWN BY: MG, AMB
 CHECKED BY: TGB

TYLIN INTERNATIONAL

P:\02373\road\del\evl\res\03.dgn 4/17/2005 9:45:09 AM

F.A.I. RTE.	SECTION	COUNTY	TOTAL SHEETS	SHEET NO.
94		COOK	20	16
STA. 2200+00.00		TO STA. 2362+00.00		
FED. ROAD DIST. NO.		ILLINOIS FED. AID PROJECT		
(1516.1, 1717 & 1818) T-2		62936		



- LEGEND:**
- EXISTING COMBINED SEWER
 - - - EXISTING COMBINED SEWER TO BE TELEVIEWED
 - XY MANHOLE STRUCTURE NO.

REVISIONS	
NAME	DATE

ILLINOIS DEPARTMENT OF TRANSPORTATION
 F.A.I. 94 (DAN RYAN EXPRESSWAY)
SEWER TELEVIEWING
 75TH-71ST C-D RAMP

SCALE: 1"=20'-0"
 DATE: APRIL 15, 2005

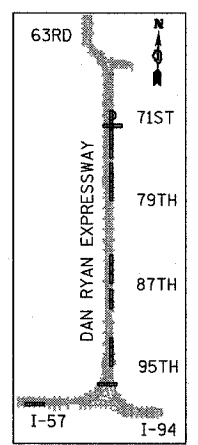
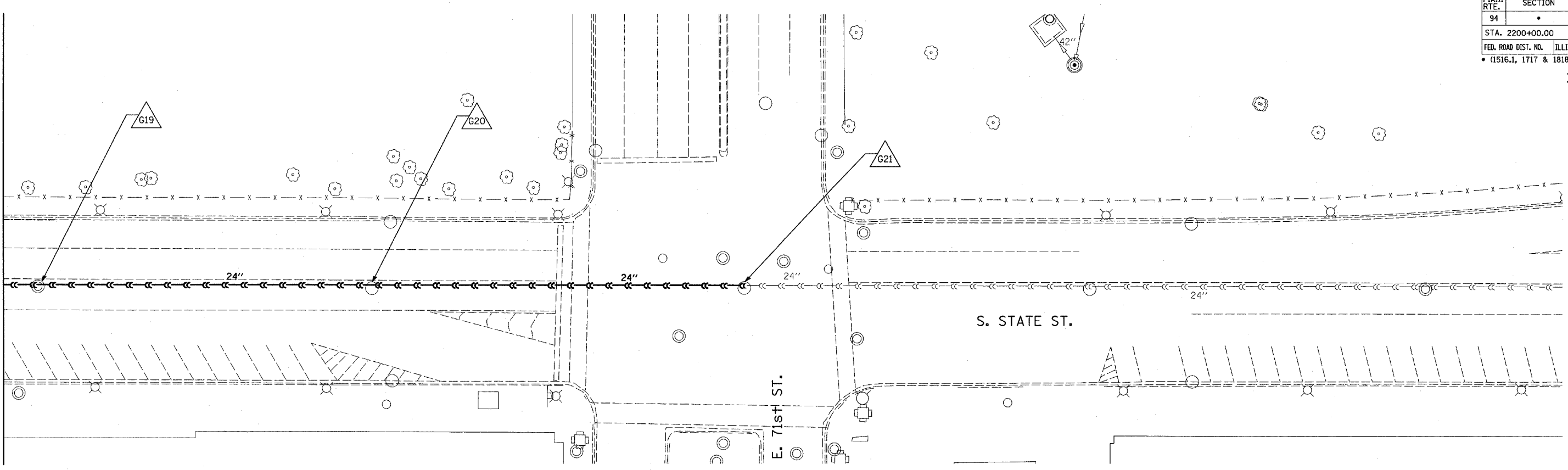
DRAWN BY: MG, AMB
 CHECKED BY: TGB

TYLIN INTERNATIONAL

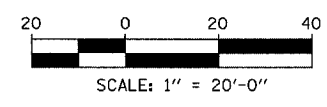
I:\0237\37road\civil\revit\asst\37adon
 4/14/2005 9:45:34 AM

F.A.I. RTE.	SECTION	COUNTY	TOTAL SHEETS	SHEET NO.
94	•	COOK	20	17
STA. 2200+00.00		TO STA. 2362+00.00		
FED. ROAD DIST. NO.	ILLINOIS	FED. AID PROJECT		
• (1516.1, 1717 & 1818) T-2		62936		

MATCHLINE RAMP STA. 8421+00.00



LOCATION MAP



LEGEND:

- EXISTING COMBINED SEWER
- - - EXISTING COMBINED SEWER TO BE TELEVISED
- △ XY MANHOLE STRUCTURE NO.

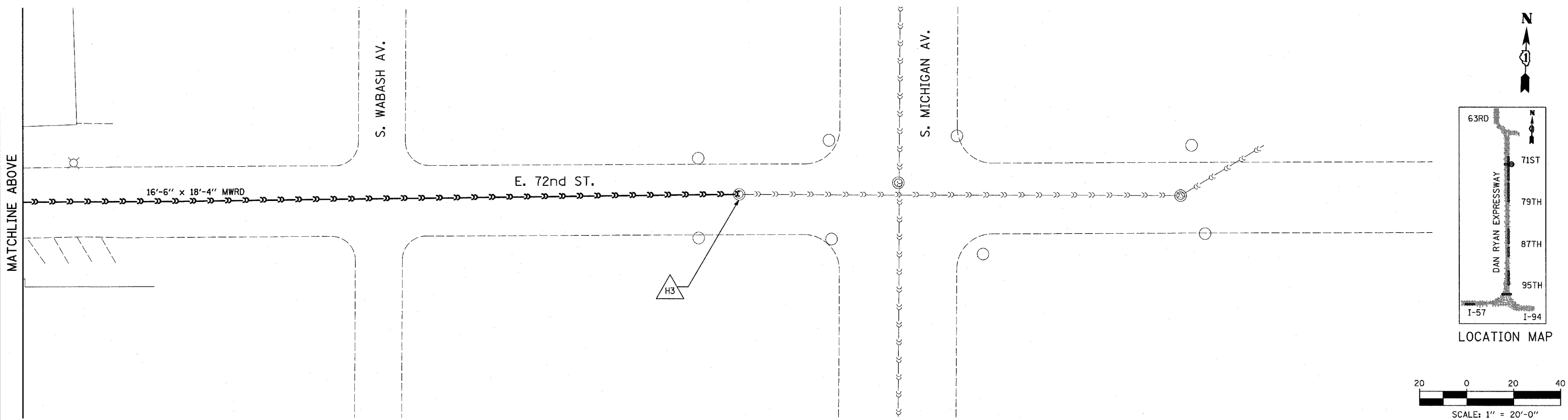
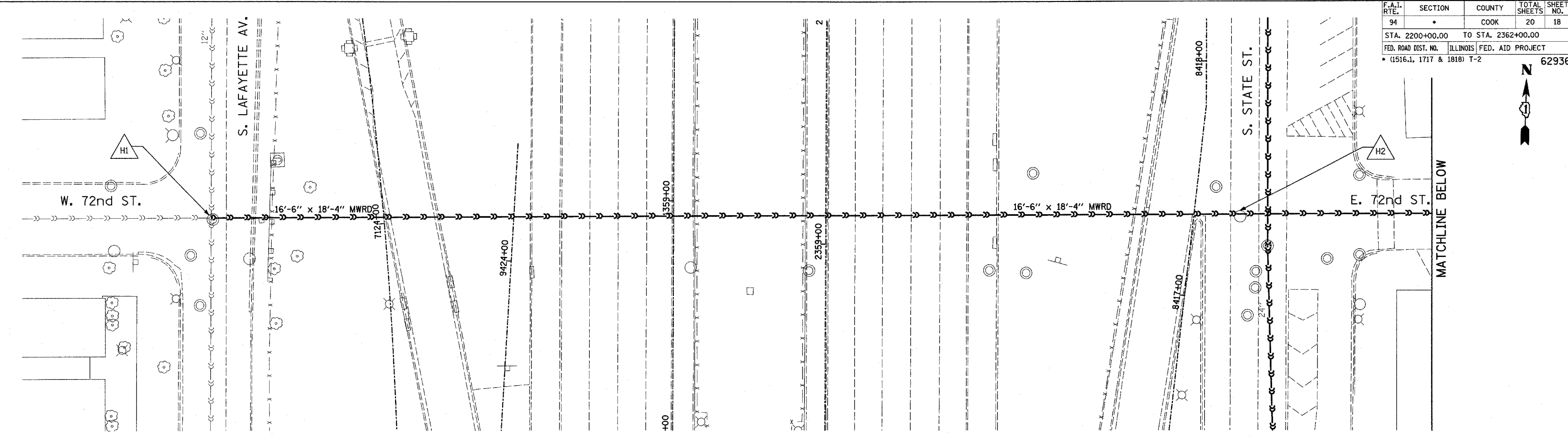
REVISIONS	
NAME	DATE

ILLINOIS DEPARTMENT OF TRANSPORTATION
 F.A.I. 94 (DAN RYAN EXPRESSWAY)
**SEWER TELEVISING
 75TH-71ST C-D RAMP**
 SCALE: 1"=20'-0"
 DATE: APRIL 15, 2005
 DRAWN BY: MG, AMB
 CHECKED BY: TGB

TYLIN INTERNATIONAL

P:\02373\road\of\veil\758123.dwg 9:45:44 AM 4/14/2005

F.A.I. RTE.	SECTION	COUNTY	TOTAL SHEETS	SHEET NO.
94		COOK	20	18
STA. 2200+00.00		TO STA. 2362+00.00		
FED. ROAD DIST. NO.	ILLINOIS	FED. AID PROJECT		
(1516.1, 1717 & 1818) T-2		62936		



TYLIN INTERNATIONAL

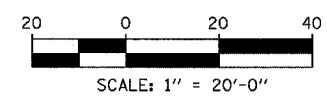
- LEGEND:**
- — — — — EXISTING COMBINED SEWER
 - — — — — EXISTING COMBINED SEWER TO BE TELEVIEWED
 - △ XY MANHOLE STRUCTURE NO.

REVISIONS	
NAME	DATE

ILLINOIS DEPARTMENT OF TRANSPORTATION
F.A.I. 94 (DAN RYAN EXPRESSWAY)
SEWER TELEVIEWING
72ND STREET CROSSING

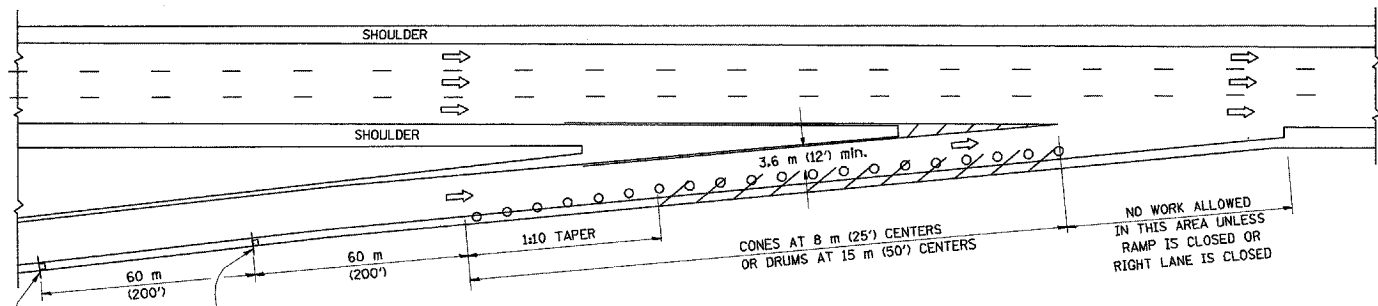
SCALE: 1" = 20'-0"
DATE: APRIL 15, 2005

DRAWN BY: MG, AMB
CHECKED BY: TGB

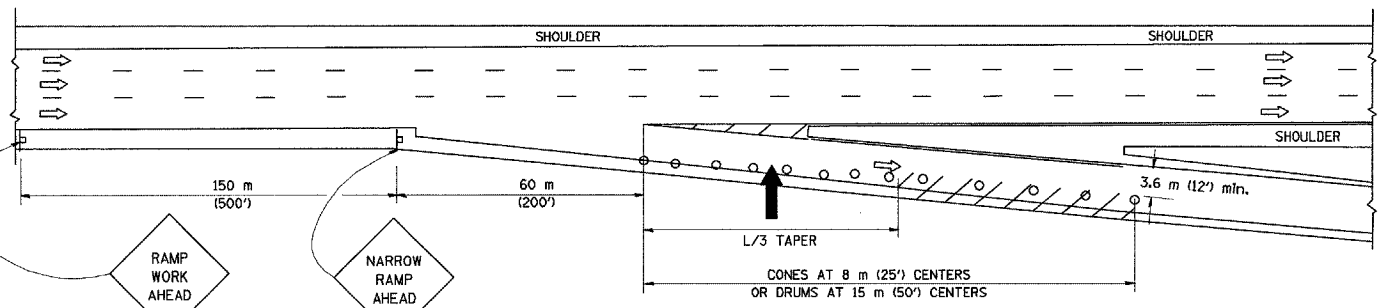


P:\02373\road\ave\1189135.dwg 4/14/2005 9:45:56 AM

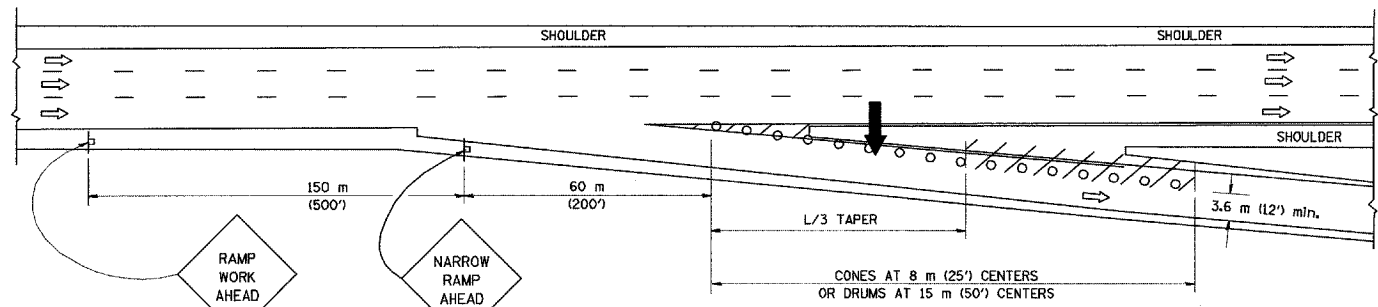
PARTIAL RAMP CLOSURE DETAILS



TYPICAL ENTRANCE RAMP



TYPICAL EXIT RAMP



TYPICAL EXIT RAMP

SYMBOLS

- ARROWBOARD
- WORK AREA
- SIGN ON PORTABLE OR PERMANENT SUPPORT
- FLAGGER WITH CONTROL SIGN
- DRUM WITH MONO-DIRECTIONAL STEADY BURNING LIGHT
- CONES - 700 (28) IN HEIGHT

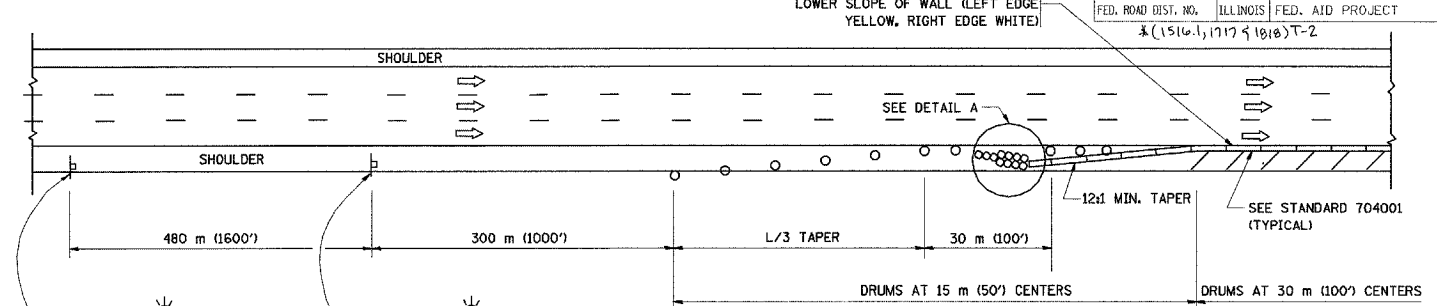
GENERAL NOTES

1. THE "L" DISTANCE EQUALS:

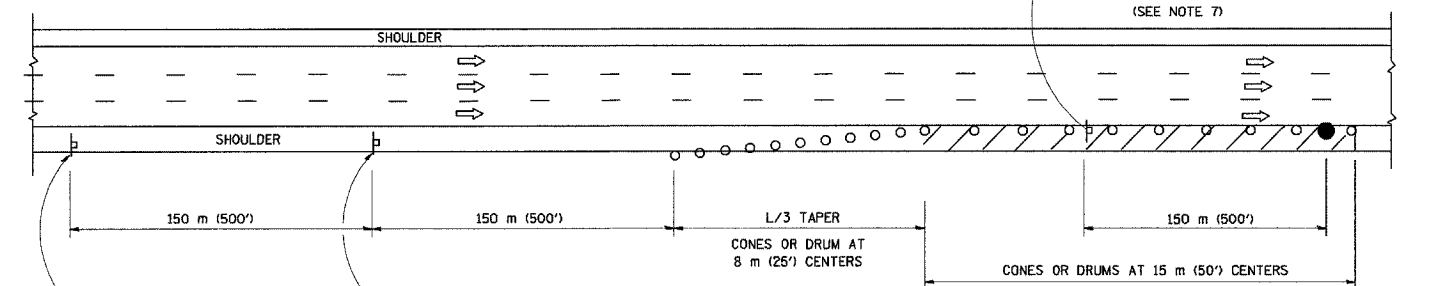
SPEED LIMIT	FORMULAS
80 km/h (45 mph)	METRIC ENGLISH
OR GREATER:	$L=0.65(W/S)$ $L=(W/S)$

W = WIDTH OF OFFSET IN METERS (FEET)
S = NORMAL POSTED SPEED KM/H (MPH)
2. PLASTIC DRUMS WITH HIGH PERFORMANCE REFLECTIVE SHEETING AND STEADY BURNING LIGHTS ARE REQUIRED FOR ALL NIGHTTIME CLOSURES.
3. ALL SIGNS SHALL BE POST MOUNTED IF THE CLOSURE TIME EXCEEDS FOUR DAYS.
4. FLASHING LIGHTS SHALL BE USED DURING THE HOURS OF DARKNESS AND SHALL BE INSTALLED ABOVE THE FIRST TWO SETS OF SIGNS.

SHOULDER CLOSURE DETAILS

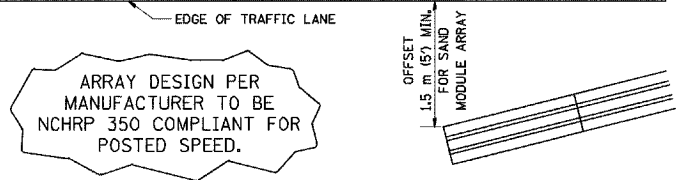


PERMANENT SHOULDER CLOSURE



DAYTIME SHOULDER CLOSURE

THIS DETAIL IS USED WHERE:
1. VEHICLES, EQUIPMENT, WORKERS OR THEIR ACTIVITIES ENCR OACH IN AN AREA CLOSER THAN 4.5 m (15') TO THE EDGE OF PAVEMENT FOR A PERIOD IN EXCESS OF 15 MINUTES.



DETAIL "A"
IMPACT ATTENUATOR, TEMPORARY
(SEE NOTE 5)

F.A. RTE.	SECTION	COUNTY	TOTAL SHEETS	SHEET NO.
94	*	COOK	20	19
STA.	TO STA.			
FED. ROAD DIST. NO.	ILLINOIS	FED. AID PROJECT		
*(1516, 1717 & 1818) T-2				

ALL DIMENSIONS ARE IN MILLIMETERS (INCHES) UNLESS OTHERWISE SHOWN.

ILLINOIS DEPARTMENT OF TRANSPORTATION

TRAFFIC CONTROL DETAILS FOR FREEWAY SHOULDER CLOSURES PARTIAL RAMP CLOSURES

SCALE: NONE
DATE: 05/06/2003

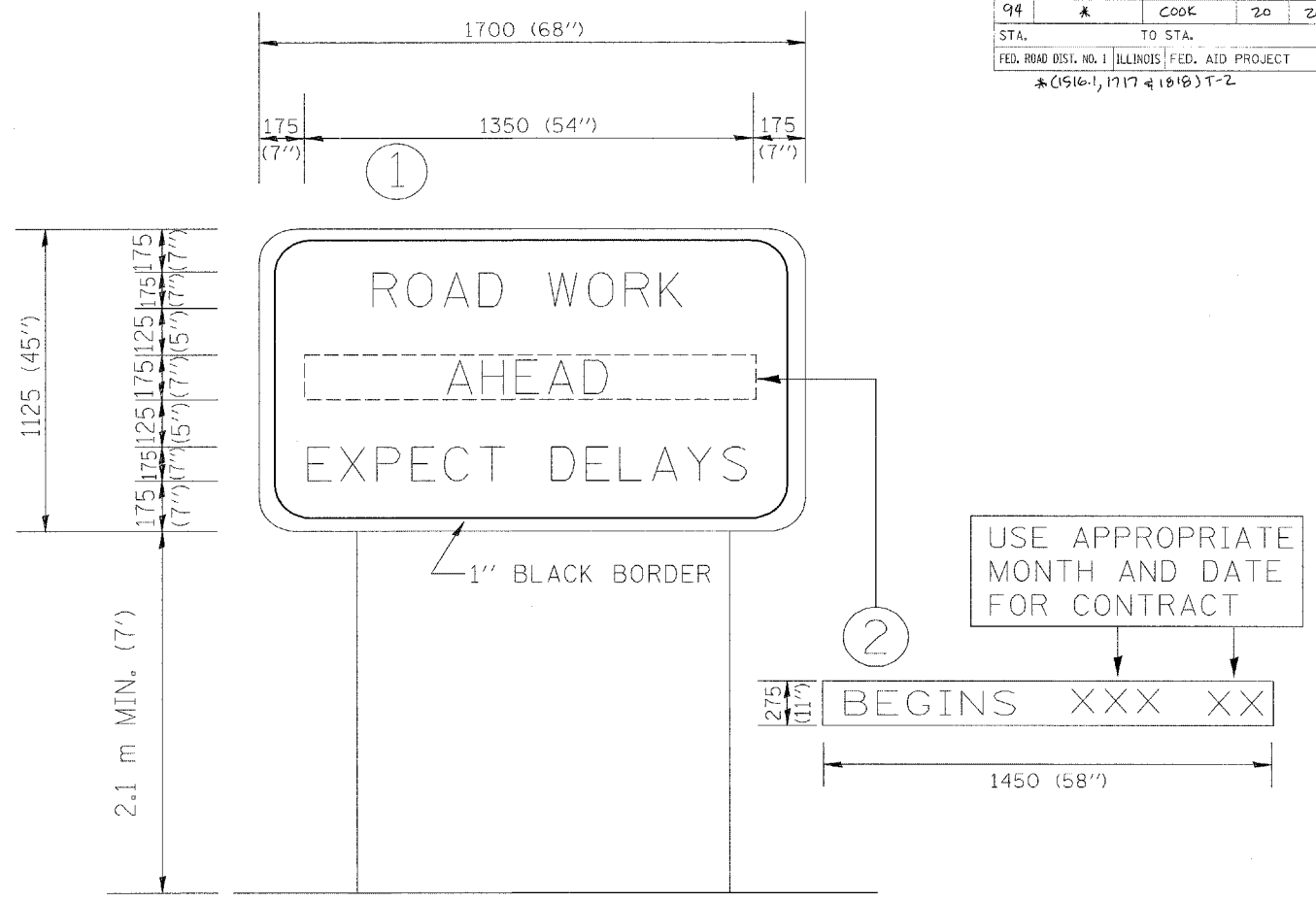
DRAWN BY: DWS
DESIGNED BY: DWS
CHECKED BY:
TC-17

REVISIONS	
NAME	DATE
DWS	11/96
JAF	12/02
NCHRP 350	04/03

5. THE IMPACT ATTENUATOR, TEMPORARY IS NOT REQUIRED WHEN THE TEMPORARY CONCRETE BARRIER WALL IS OUTSIDE THE CLEAR ZONE OR IS TIED INTO THE EXISTING GUARDRAIL. IF OFFSET IS LESS THAN 5 FEET USE "TRAFFIC BARRIER TERMINAL, TYPE III, TEMPORARY" DEVICE TO MEET NCHRP350 FOR POSTED SPEED.
6. AUTHORIZATION FROM THE DISTRICT'S BUREAU OF TRAFFIC IS REQUIRED FOR ALL FREEWAY CLOSURES.
7. THE FLAGGER AND FLAGGER SIGN ARE REQUIRED AT THE ABOVE WORK SITES WHEN:
 - a. FOUR OR MORE WORK VEHICLES ENTER THE TRAFFIC LANES IN A ONE HOUR PERIOD.
 - b. THE WORK ACTIVITY REQUIRES FREQUENT ENCR OACHMENT INTO THE LANE OPEN TO TRAFFIC.
 THE FLAGGER SHALL BE STATIONED APPROXIMATELY 30 m (100') TO 60 m (200') IN ADVANCE OF THE WORKERS.

F.A. RTL	SECTION	COUNTY	TOTAL SHEETS	SHEET NO.
94	*	COOK	20	20
STA.	TO STA.			
FED. ROAD DIST. NO. 1 ILLINOIS FED. AID PROJECT				
*(1516-1, 1717 & 1818) T-2				

62936



NOTES:

1. USE BLACK LETTERING ON ORANGE BACKGROUND.
2. ERECT SIGNS IN ADVANCE OF THE LOCATION FOR THE "ROAD CONSTRUCTION AHEAD" SIGN AT LOCATIONS AS DIRECTED BY THE ENGINEER.
3. ERECT SIGN ① WITH INSTALLED PANEL ② ONE WEEK PRIOR TO THE START OF CONSTRUCTION.
4. REMOVE PANEL ② SOON AFTER THE START OF CONSTRUCTION.
5. SEE SPECIAL PROVISION FOR "TEMPORARY INFORMATION SIGNING" FOR ADDITIONAL INFORMATION.
6. ONE SIGN ASSEMBLY EQUALS 2.3 SQ. M. (25.70 SQ. FT.)

ALL DIMENSIONS ARE IN MILLIMETERS (INCHES) UNLESS OTHERWISE SHOWN.

REVISIONS		ILLINOIS DEPARTMENT OF TRANSPORTATION
NAME	DATE	
R. MIRS	9-15-97	TEMPORARY INFORMATION SIGNING
R. MIRS	12-11-97	
T. RAMMACHER	2-2-99	

SCALE: DATE 10/18/2002 DRAWN BY: BUR. OF DESIGN CHECKED BY: