

BOBBY L. RATMEYER

F.A. RTE.	SECTION	COUNTY	TOTAL SHEETS	SHEET NO.
549	116RS-1	OGLE	593	78
STA. 483+00		TO STA. 499+00		
FED. ROAD DIST. NO.		ILLINOIS FED. AID PROJECT		

LINDA S. BORNEMAN

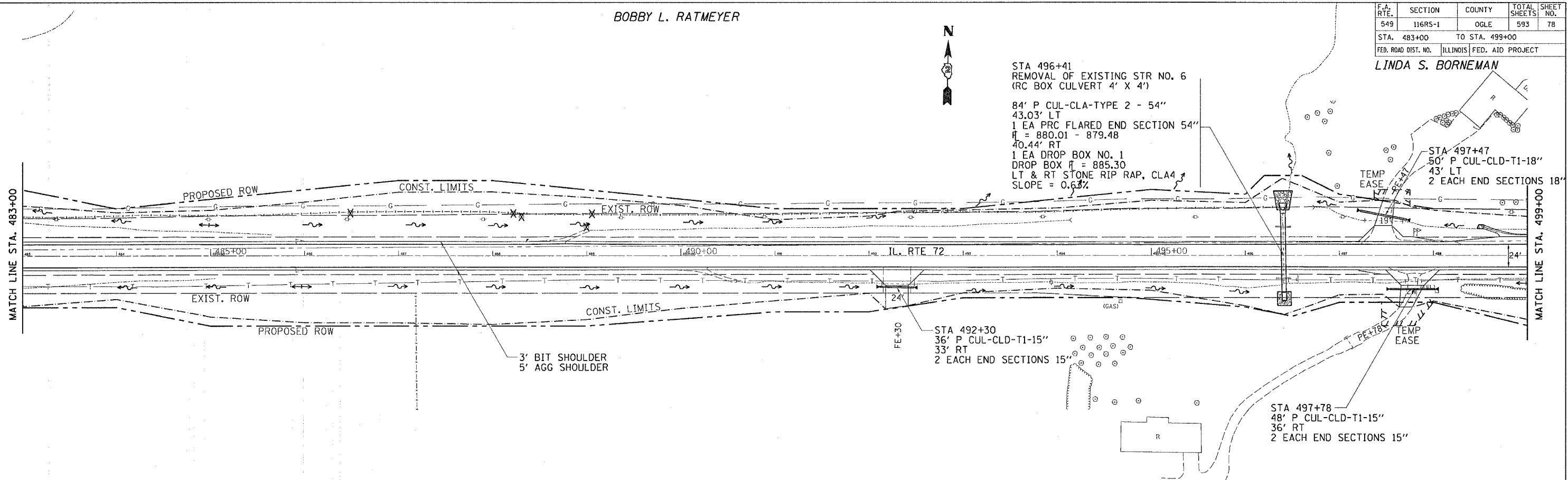
STA 496+41
REMOVAL OF EXISTING STR NO. 6
(RC BOX CULVERT 4' X 4')

84' P CUL-CLA-TYPE 2 - 54"
43.03' LT
1 EA PRC FLARED END SECTION 54"
R = 880.01 - 879.48
40.44' RT
1 EA DROP BOX NO. 1
DROP BOX R = 885.30
LT & RT STONE RIP RAP, CLA4
SLOPE = 0.63%

STA 497+47
50' P CUL-CLD-T1-18"
43' LT
2 EACH END SECTIONS 18"

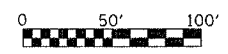
STA 497+78
48' P CUL-CLD-T1-15"
36' RT
2 EACH END SECTIONS 15"

STA 492+30
36' P CUL-CLD-T1-15"
33' RT
2 EACH END SECTIONS 15"



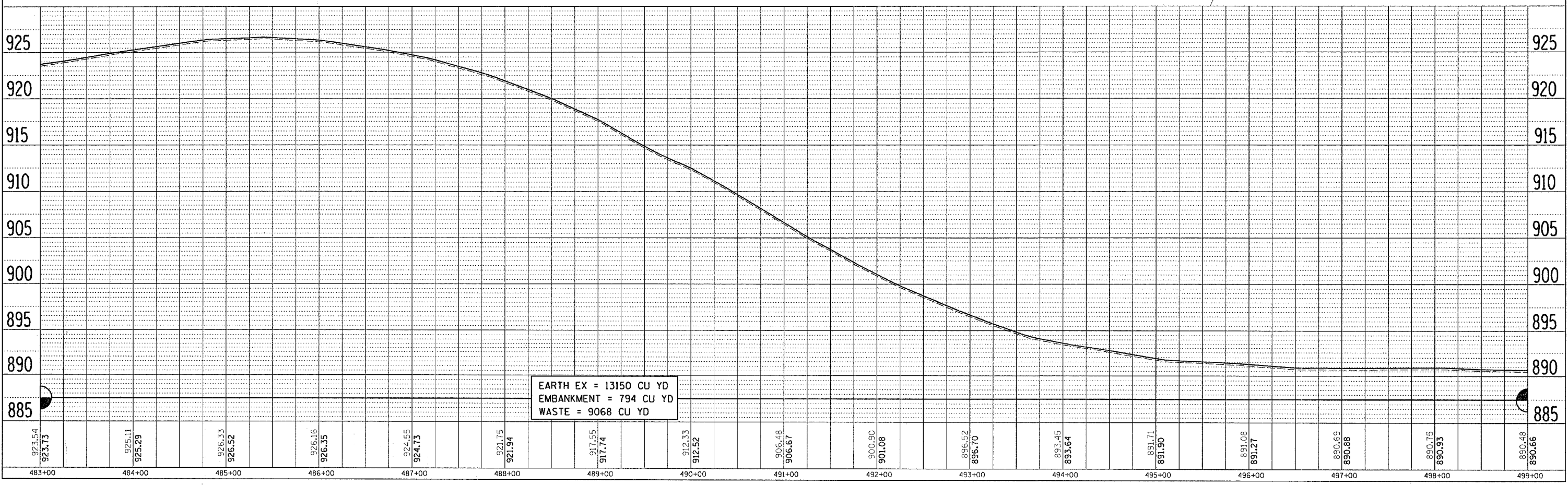
MICHAEL A. STUKENBERG

DONALD STUKENBERG



PLAN	DATE
SURVEYED	
NOTE BOOK	
BY	
NO.	

PROFILE	DATE
SURVEYED	
NOTE BOOK	
BY	
NO.	



EARTH EX = 13150 CU YD
EMBANKMENT = 794 CU YD
WASTE = 9068 CU YD

DATE-TIME
BOOK SPEC
REF
REF