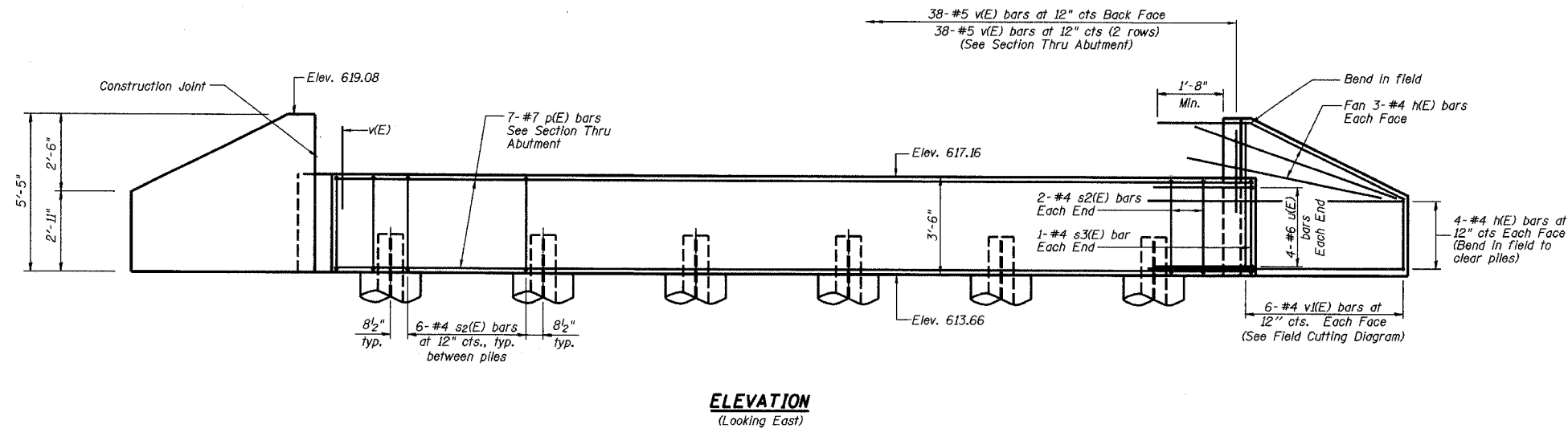


STATE OF ILLINOIS  
DEPARTMENT OF TRANSPORTATION

Sheet No. 8  
of 11 Sheets

ROUTE NO.	SECTION	COUNTY	TOTAL SHEETS	SHEET NO.
FAS 1197	105BR-2	WHITESIDE	59	23
FED. ROAD DIST. NO.	CLINOS	PROJECT		

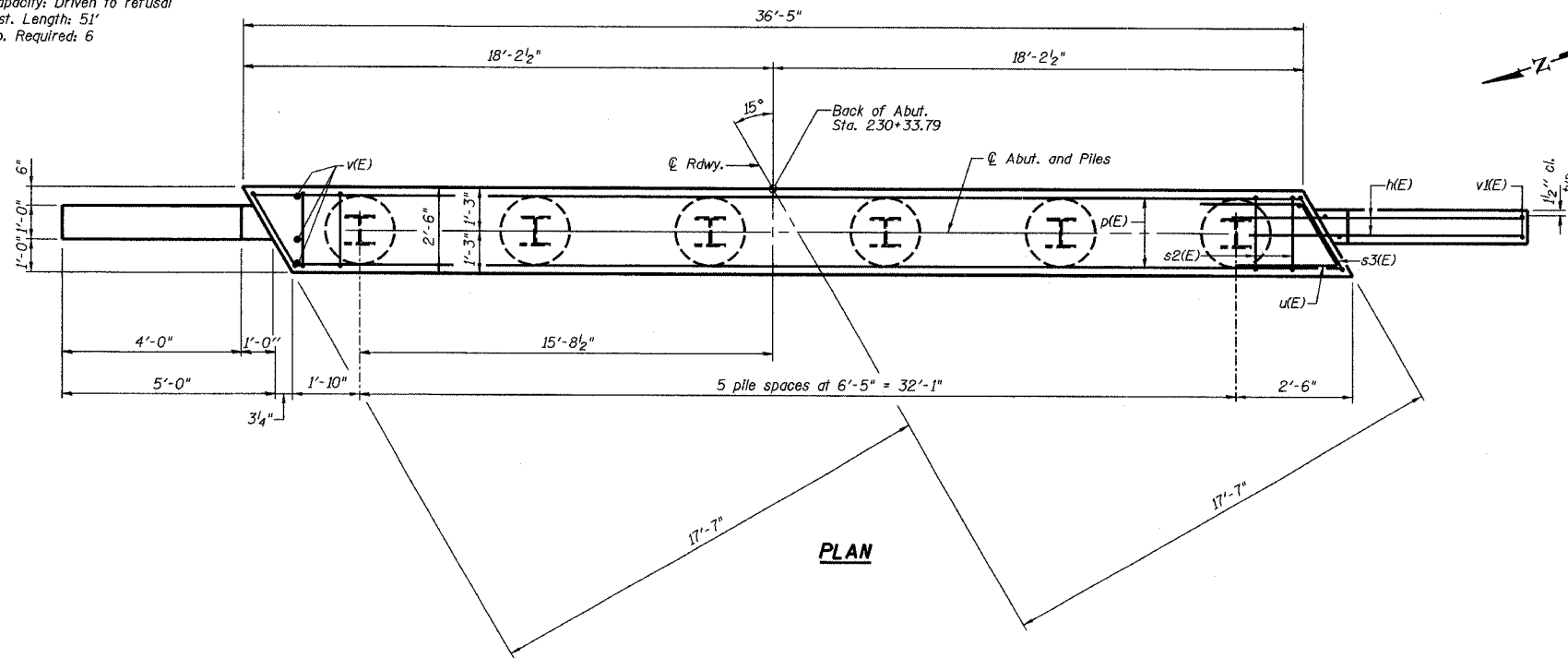
CONTRACT 64421



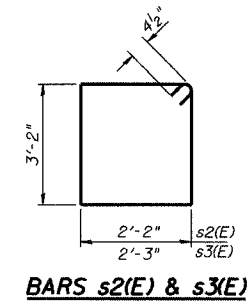
**ELEVATION**  
(Looking East)

**PILE DATA**

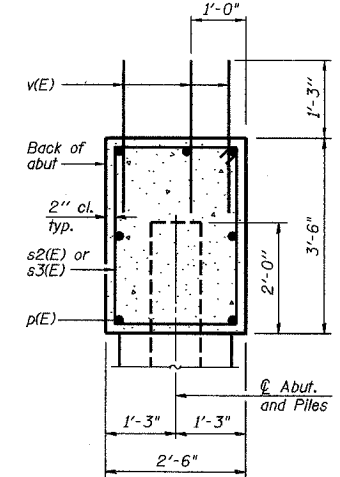
Type: HP12x63  
Capacity: Driven to refusal  
Est. Length: 51'  
No. Required: 6



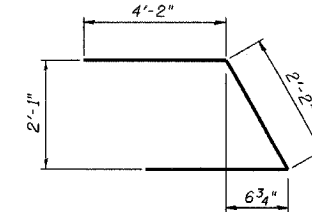
**PLAN**



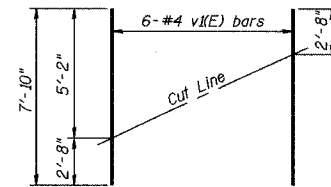
**BARS s2(E) & s3(E)**



**SECTION THRU ABUTMENT**



**BAR u(E)**



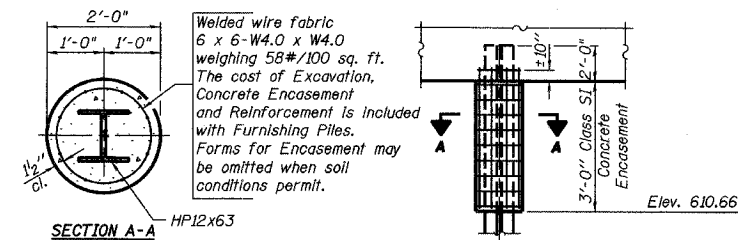
**FIELD CUTTING DIAGRAM**

Order v(E) full length. Cut as shown and use remainder of bars in opposite face.

**BILL OF MATERIAL**

Bar No.	Size	Length	Shape
28	#4	7'-3"	
7	#7	36'-1"	
34	#4	11'-5"	
2	#4	11'-7"	
8	#6	10'-6"	
114	#5	3'-5"	
12	#4	7'-10"	
Structure Excavation			Cu. Yd. 35
Concrete Structures			Cu. Yd. 13.4
Reinforcement Bars, Epoxy Coated			Pound 1520
Furnishing Steel Piles HP12x63			Foot 306
Driving Steel Piles			Foot 306

Reinforcement bars designated (E) shall be epoxy coated.



**PILE ENCASEMENT DETAIL**

**EAST ABUTMENT DETAILS**

<b>REVISIONS</b> No. DATE INITIALS 1 2 3 4 5 6 7 8 9 10 11 12		<b>MOLINE ROAD OVER UNNAMED TRIBUTARY TO ROCK RIVER</b> FAS ROUTE 1197 SECTION 105BR-2 STA 229+67.50 SN 098-0110 WHITESIDE COUNTY HOMER L. CHASTAIN & ASSOCIATES, LLP CONSULTING ENGINEERS 184-001397	DRAWN BY DATE R King 8/04 CHECKED BY DATE CMV 8/04 DATED BY DATE CWC 8/04 PROJECT No. <b>4858-3</b> SHEET No.
--	--	--	---