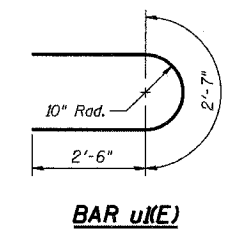
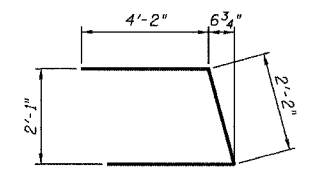
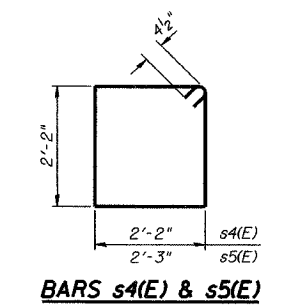
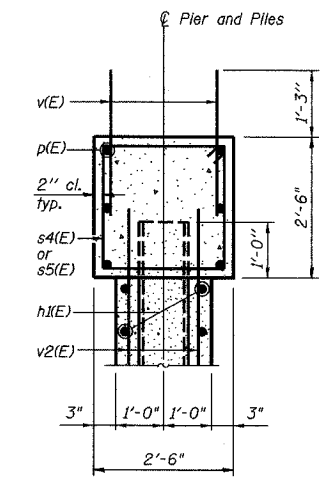
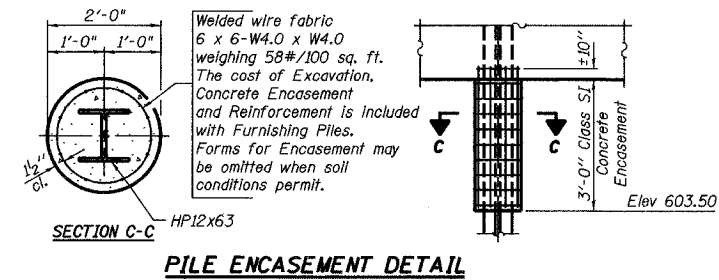
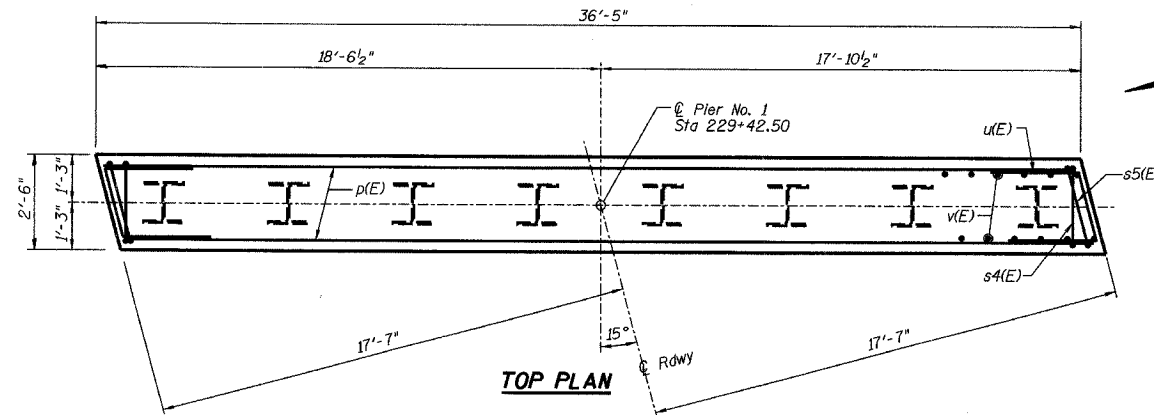


STATE OF ILLINOIS  
DEPARTMENT OF TRANSPORTATION

ROUTE NO.	SECTION	COUNTY	TOTAL SHEETS	SHEET NO.
FAS 1197	105BR-2	WHITESIDE	59	24
FEDERAL DIST. NO.		ILLINOIS	PROJECT	
		CONTRACT 64421		

**PILE DATA**

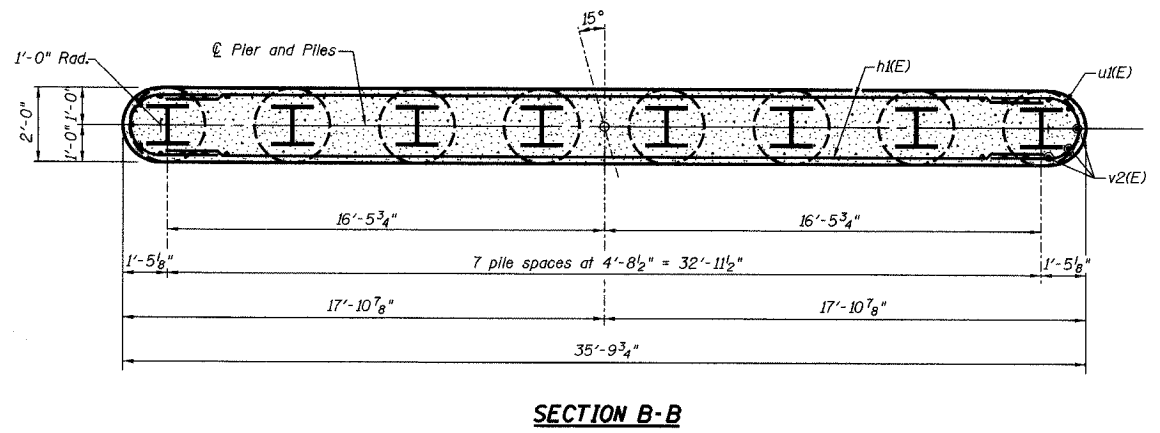
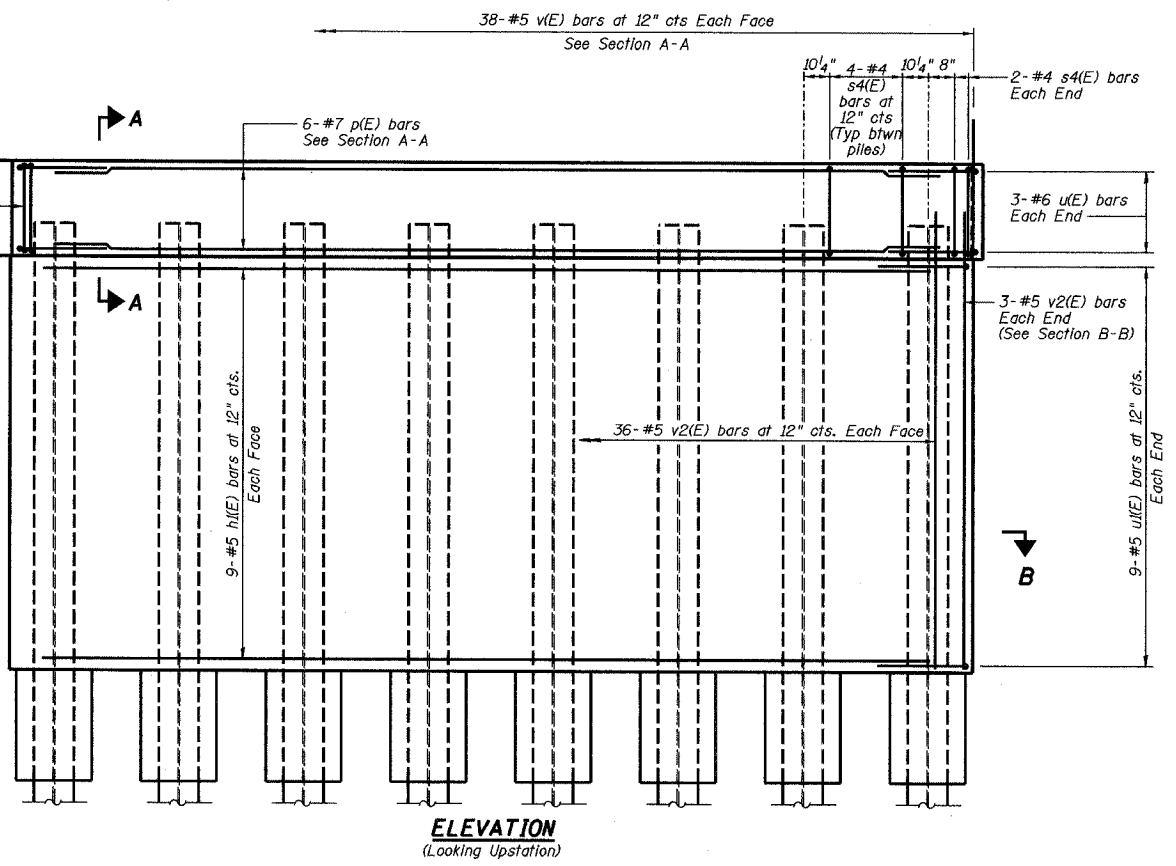
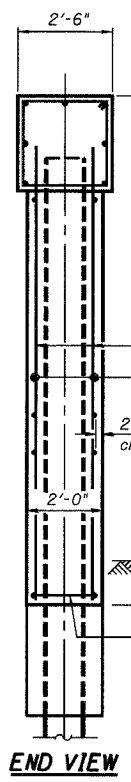
Type: HP12x63  
Capacity: Driven to refusal  
Est. Length: 50'  
No. Required: 8



**BILL OF MATERIAL**

Bar	No.	Size	Length	Shape
h(E)	18	#5	33'-0"	—
p(E)	6	#7	36'-1"	—
s4(E)	32	#4	9'-5"	□
s5(E)	2	#4	9'-7"	□
u(E)	6	#6	10'-6"	U
u(E)	18	#5	7'-7"	U
v(E)	76	#5	3'-5"	—
v2(E)	78	#5	9'-9"	—
Structure Excavation		Cu. Yd.	42	
Concrete Structures		Cu. Yd.	31.0	
Reinforcement Bars, Epoxy Coated		Pound	2580	
Furnishing Steel Piles HP12x63		Foot	400	
Driving Steel Piles		Foot	400	
Underwater Structure Excavation Protection - Location 1		Each	1	

Reinforcement Bars designated (E) shall be epoxy coated.



REVISIONS			PIER NO. 1 DETAILS		DRAWN BY DATE	
No.	DATE	INITIALS	MOLINE ROAD OVER UNNAMED TRIBUTARY TO ROCK RIVER		R King 8/04	
1			FAS ROUTE 1197 SECTION 105BR-2		CHECKED BY DATE	
2			STA 229+67.50 WHITESIDE COUNTY		CMV 8/04	
3			HOMER L. CHASTAIN & ASSOCIATES, LLP		DATE BY DATE	
4			184-001397		BOOK NUMBER	
5					PROJECT NO.	
6					4858-3	
7					SHEET NO.	
8						
9						
10						
11						
12						