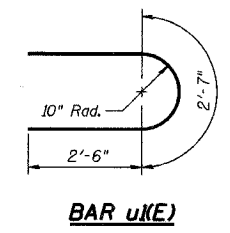
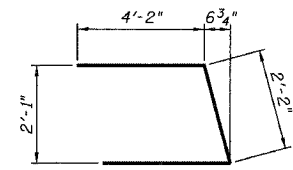
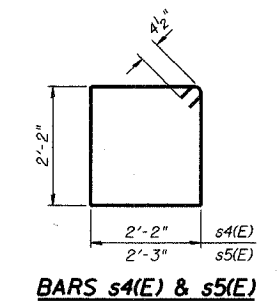
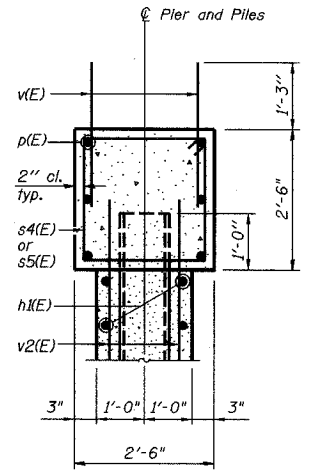
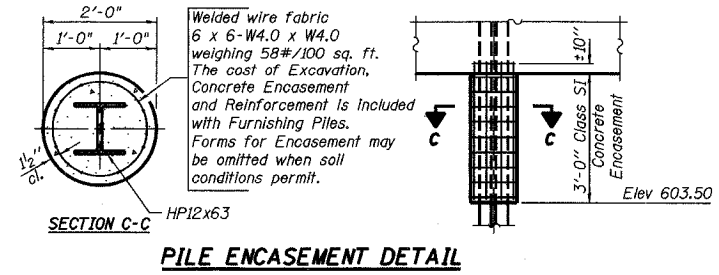
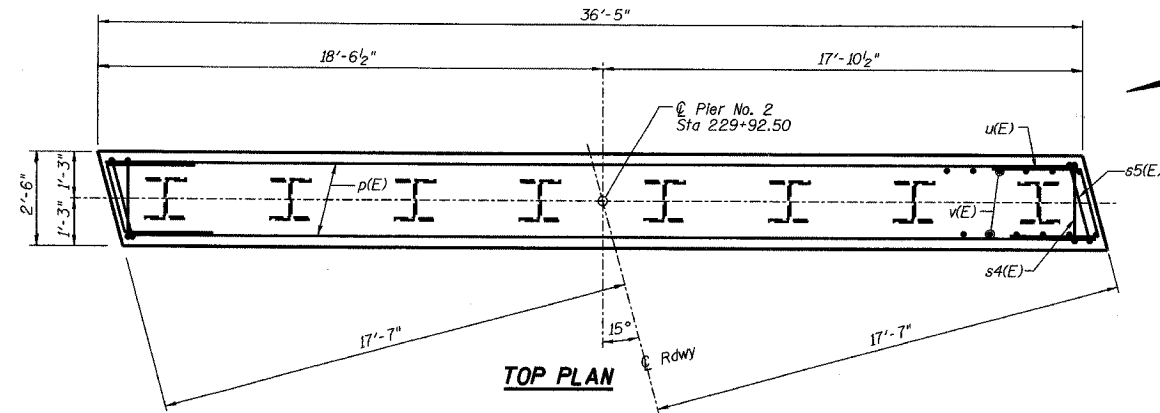


STATE OF ILLINOIS  
DEPARTMENT OF TRANSPORTATION

ROUTE NO.	SECTION	COUNTY	TOTAL SHEETS	SHEET NO.
FAS 1197	105BR-2	WHITESIDE	59	25
FED. ROAD DIST. NO.	ILLINOIS PROJECT	CONTRACT 64421		

**PILE DATA**

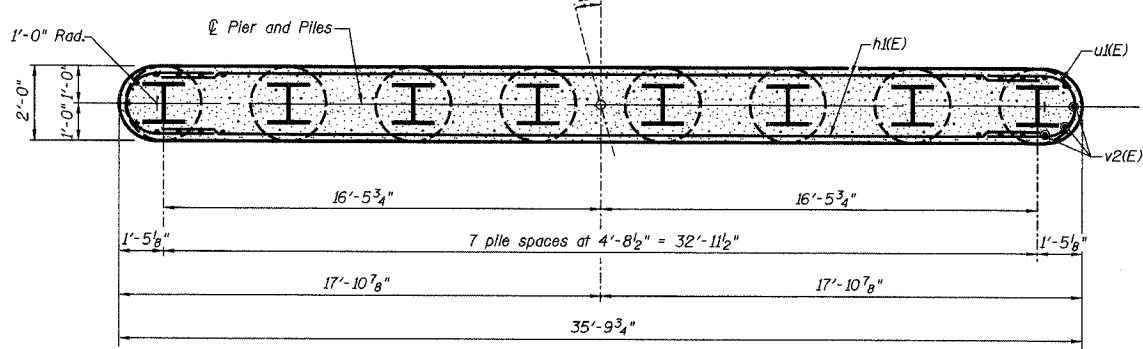
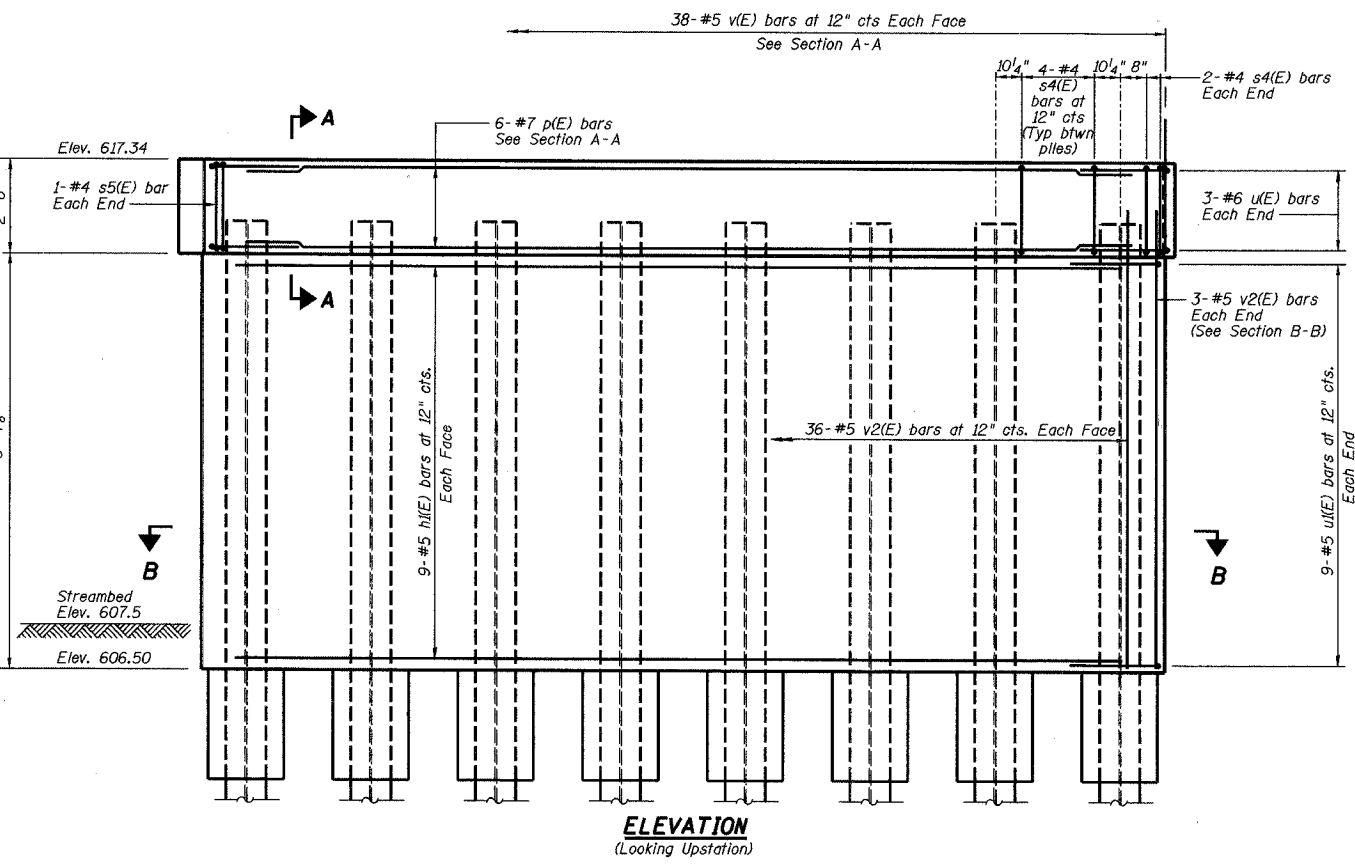
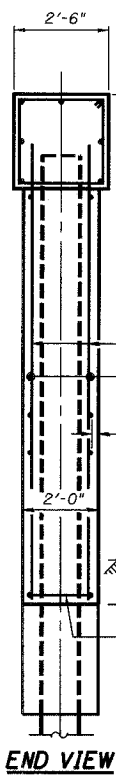
Type: HP12x63  
Capacity: Driven to refusal  
Est. Length: 55'  
No. Required: 8



**BILL OF MATERIAL**

Bar	No.	Size	Length	Shape
h(E)	18	#5	33'-0"	—
p(E)	6	#7	36'-1"	—
s4(E)	32	#4	9'-5"	□
s5(E)	2	#4	9'-7"	□
u(E)	6	#6	10'-6"	U
v(E)	76	#5	3'-5"	—
v2(E)	78	#5	9'-9"	—
Structure Excavation			Cu. Yd.	9
Concrete Structures			Cu. Yd.	30.4
Reinforcement Bars, Epoxy Coated			Pound	2580
Furnishing Steel Piles HP12x63			Foot	440
Driving Steel Piles			Foot	440
Underwater Structure Excavation Protection - Location 2			Each	1

Reinforcement Bars designated (E) shall be epoxy coated.



REVISIONS		PIER NO. 2 DETAILS	
NO.	DATE	INITIALS	
1			
2			
3			
4			
5			
6			
7			
8			
9			
10			
11			
12			

MOLINE ROAD OVER UNNAMED TRIBUTARY TO ROCK RIVER		DRAWN BY DATE R King 8/04
FAS ROUTE 1197 SECTION 105BR-2		CHECKED BY DATE CJV 8/04
STA 229+67.50 SN 098-0110		DATE BY DATE CWC 8/04
WHITESIDE COUNTY		BOOK NUMBER
HOMER L. CHASTAIN & ASSOCIATES, LLP CONSULTING ENGINEERS 184-001397		PROJECT NO. 4858-3
		SHEET NO.