

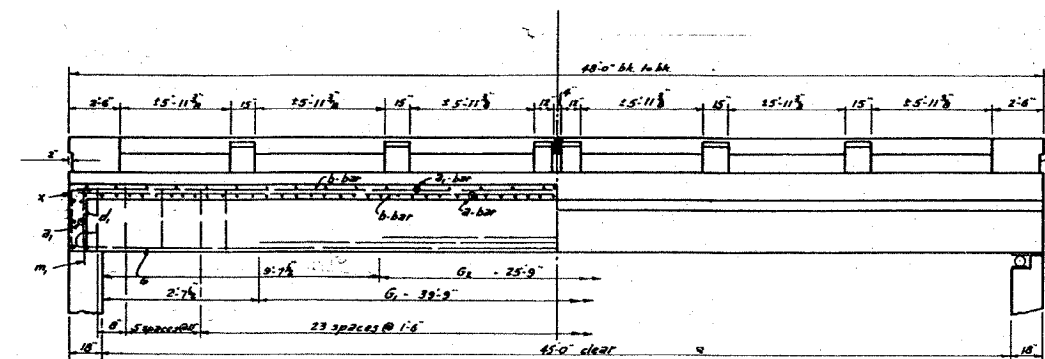
|                      |          |           |              |           |
|----------------------|----------|-----------|--------------|-----------|
| FILE NO.             | SECTION  | COUNTY    | TOTAL SHEETS | SHEET NO. |
| 1197                 | 105 BR-2 | WHITESIDE | 59           | 33        |
| STA.                 | TO STA.  |           |              |           |
| EXISTING CONDITIONS: |          |           |              |           |

CONTRACT 64421

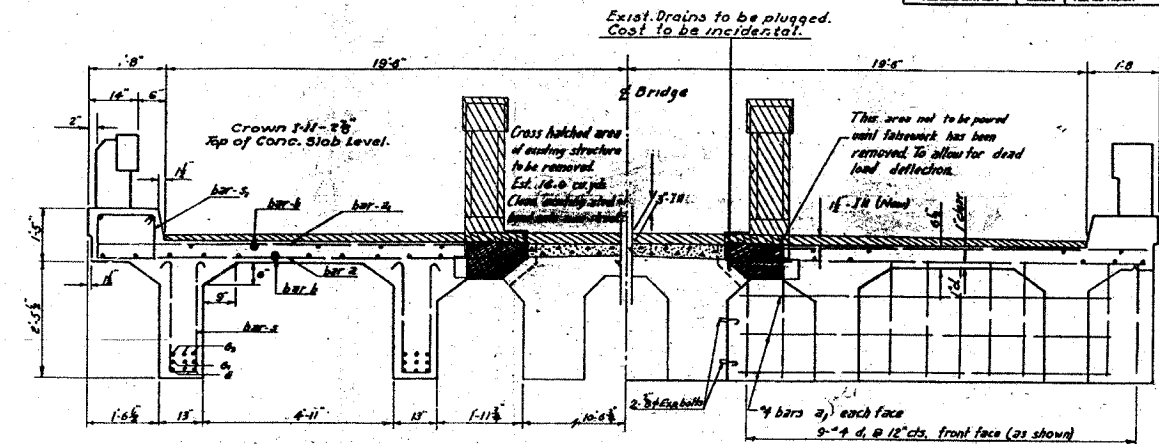
STATE OF ILLINOIS  
DEPARTMENT OF PUBLIC WORKS & BUILDINGS  
DIVISION OF HIGHWAYS

FOR INFORMATION ONLY

|                         |         |           |              |           |
|-------------------------|---------|-----------|--------------|-----------|
| PROJECT NO.             | SECTION | COUNTY    | TOTAL SHEETS | SHEET NO. |
| R.A. 86                 | 105BY   | Whiteside | 9            | 7         |
| SHEET NO. 2<br>3 SHEETS |         |           |              |           |



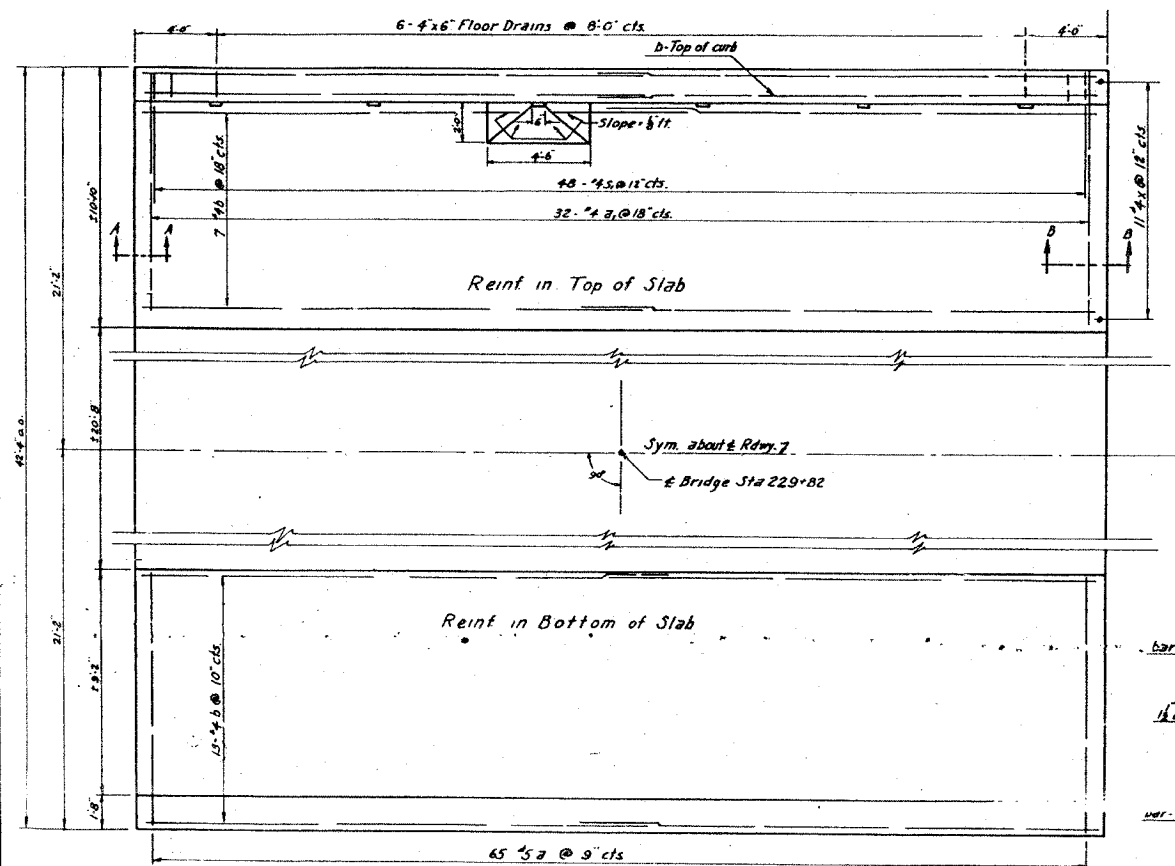
**ELEVATION**



**AT & SPAN**

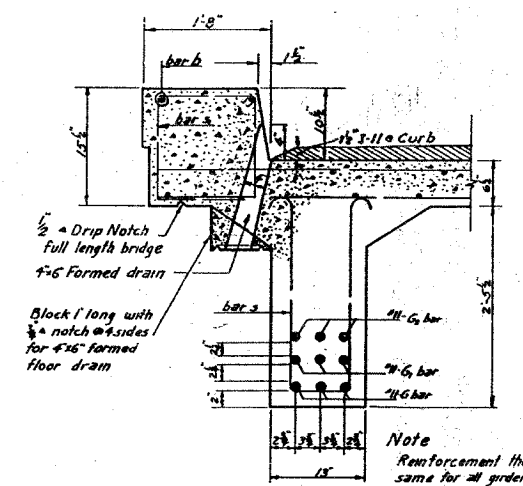
**AT ABUTMENT**

**CROSS SECTION**

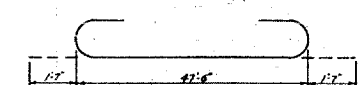


Reinf in Top of Slab

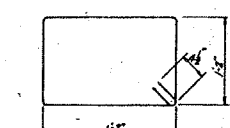
Reinf in Bottom of Slab



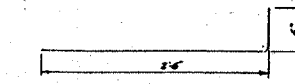
**GIRDER DETAIL**



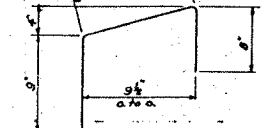
**BAR G**



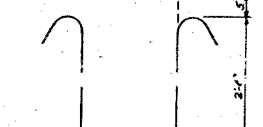
**BAR S1**



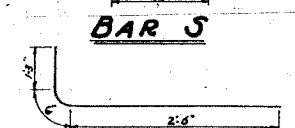
**BAR d**



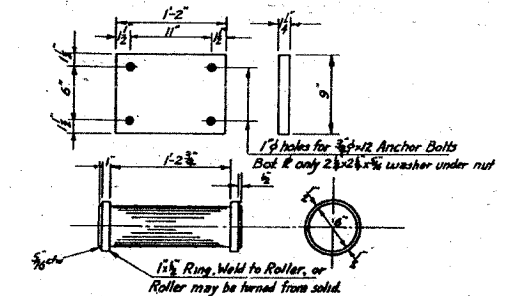
**BAR f**



**BAR S**



**BAR X**



**ROLLER & PLATES DETAIL**

**BILL OF MATERIAL**

| Bars | No. | Size | Length | Shape |
|------|-----|------|--------|-------|
| a    | 130 | 5    | 10'-4" | —     |
| a1   | 88  | 4    | 10'-4" | —     |
| b    | 88  | 4    | 24'-6" | —     |
| d    | 68  | 5    | 3'-0"  | —     |
| d1   | 36  | 4    | 2'-7"  | —     |
| G    | 12  | 11   | 50'-8" | —     |
| G1   | 12  | 11   | 39'-9" | —     |
| G2   | 12  | 11   | 25'-9" | —     |
| f    | 32  | 4    | 2'-3"  | —     |
| e    | 18  | 5    | 29'-5" | —     |
| x    | 48  | 4    | 4'-5"  | —     |
| s    | 138 | 4    | 6'-8"  | —     |
| s1   | 96  | 4    | 5'-3"  | —     |

|                    |         |       |
|--------------------|---------|-------|
| Class "X" Concrete | cu yds. | 48.7  |
| Handrail Concrete  | cu yds. | 2.5   |
| Reinforcement Bars | lbs     | 12420 |
| Masonry Removal    | cu yds. | 16.0  |
| Expansion Bolts    | each    | 8     |
| Name Plate         | each    | One   |
| Structural Steel   | lbs     | 1620  |

**SECTION AA**

**SECTION BB**

DESIGNED *Edward M. Finner*  
CHECKED *George J. Pender*  
DRAWN *EMF* R.Rash  
CHECKED *ST*

EXAMINED *W.M. Romine*  
PASSED *Ed. [Signature]*  
APPROVED *R.R. [Signature]*

MAR 4 1955 PLAN

**SUPERSTRUCTURE**  
**SBI RT 86 SEC 105 BY**  
**WHITESIDE COUNTY**  
**STA 229 +82**