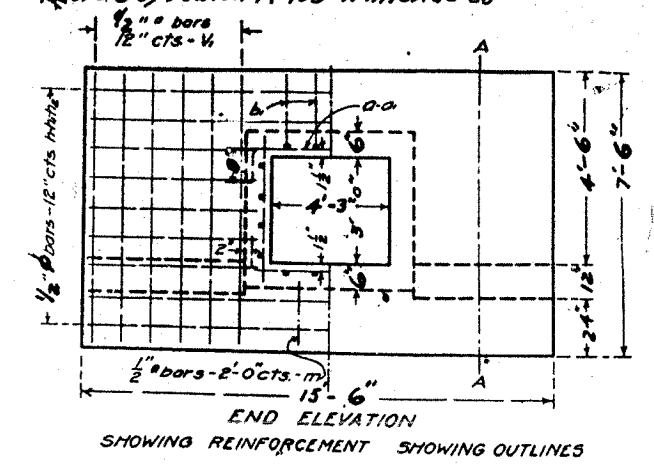
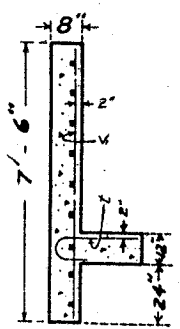


FED. ROAD DIST. NO.	STATE	FED. AID PROJ. NO.	FISCAL YEAR	SHEET NO.	TOTAL SHEETS
7	ILL	121	1928	74	93

FED. ROAD DIST. NO.	STATE	FED. AID PROJ. NO.	FISCAL YEAR	SHEET NO.	TOTAL SHEETS
7	ILL	121	1928	74	93



OLD TOPS OF HEAD-WALLS
LEL TO GRADE LINE.



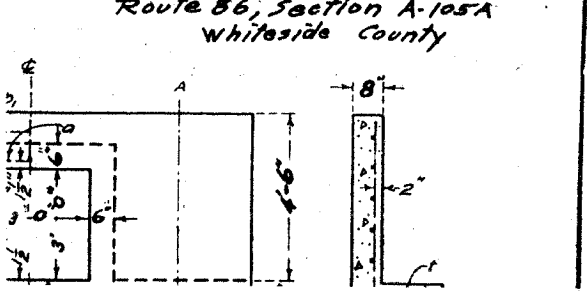
BILL OF MATERIAL

Bars	No.	Size	Length
V	186	1/2"	37'-9"
h	24	1/2"	7'-0"
h	6	1/2"	15'-0"
h	10	1/2"	8'-0"
h	10	1/2"	6'-0"
a	482	1/2"	5'-0"
a	28	1/2"	6'-6"
b	32	1/2"	25'-0"
b	20	1/2"	20'-6"
l	24	1/2"	6'-6"
m	2	1/2"	5'-0"
Steel-Lbs.			3870
Concrete-Cu Yds.			31.6

Class A concrete to be used throughout. Proportions 1:2 1/2:4. Use 'm' bars in downstream headwall only.

Sta. 398+00
S.B.I. Route 86 Sec. 105

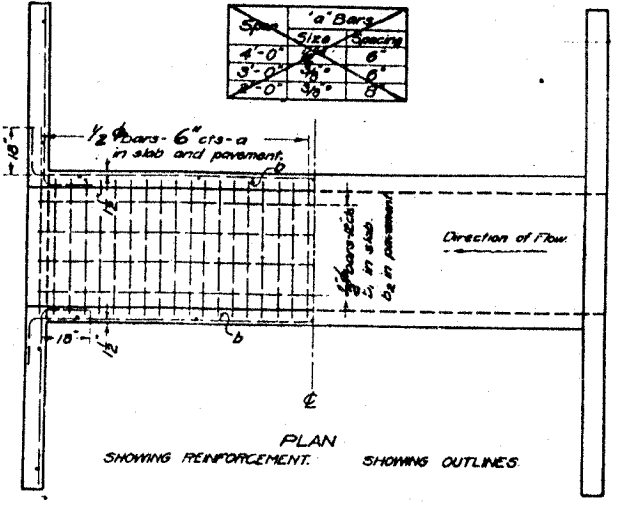
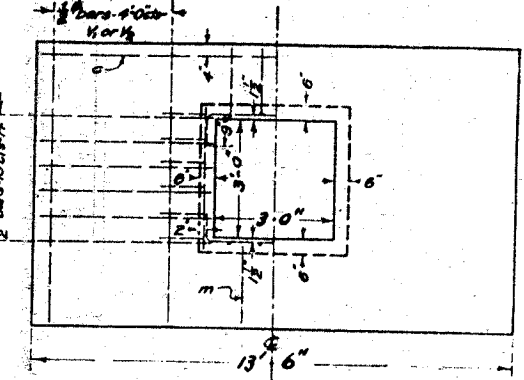
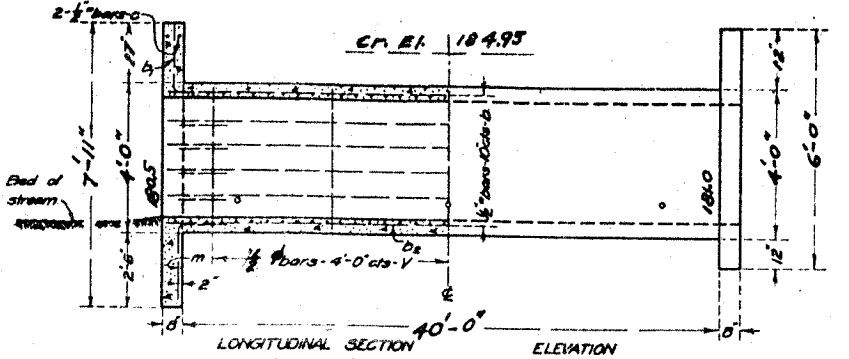
FED. ROAD DIST. NO.	STATE	FED. AID PROJ. NO.	FISCAL YEAR	SHEET NO.	TOTAL SHEETS
7	ILL	121	1928	74	93



Sta. 427+50 El. 183.89
V.C. 200' Ext. 0.79
Grades -1.60% & +1.543%

STATE OF ILLINOIS
STATE HIGHWAY DEPARTMENT
REINFORCED CONCRETE BOX CULVERT

FED. ROAD DIST. NO.	STATE	FED. AID PROJ. NO.	FISCAL YEAR	SHEET NO.	TOTAL SHEETS
7	ILL	121	1928	74	93



Note:
Fill over box should be limited to 4'-0".
Maximum Clearance = 4'-0"
Use 'm' bars in downstream headwall only.

ADJUST HEIGHT OF HEAD WALLS TO BE 12 INCHES ABOVE SHOULDER ELEVATION.

BUILD TOPS OF HEAD-WALLS PARALLEL TO GRADE LINE.

BILL OF MATERIAL

Bars	No.	Size	Length
V	22	1/2"	37'-9"
h	4	1/2"	7'-6"
h	20	1/2"	6'-6"
a	164	1/2"	5'-0"
b	20	1/2"	23'-0"
b	6	1/2"	22'-6"
l	4	1/2"	21'-6"
m	2	1/2"	5'-0"
Steel-Lbs.			1370
Concrete-Cu Yds.			14.6

Class A concrete to be used throughout
Proportions 1-2 1/2-4

Sta. 428+10
Rte 86 sec. 105
Whiteside County

STANDARD SPECIFICATIONS FOR CONSTRUCTION OF PUBLIC WORKS
APPROVED BY THE BOARD OF SUPERVISORS
J. H. Bunch
ENGR. OF DESIGN

Grade 0.00%
Radius 2864.93
Super 3/4":1
" @ Culvert 0.132":1
P.C. 372+45.2

STATE OF ILLINOIS
DEPARTMENT OF PUBLIC WORKS & BUILDINGS
DIVISION OF HIGHWAYS

FED. ROAD DIST. NO.	STATE	FED. AID PROJ. NO.	FISCAL YEAR	SHEET NO.	TOTAL SHEETS
7	ILL	121	1928	74	93

