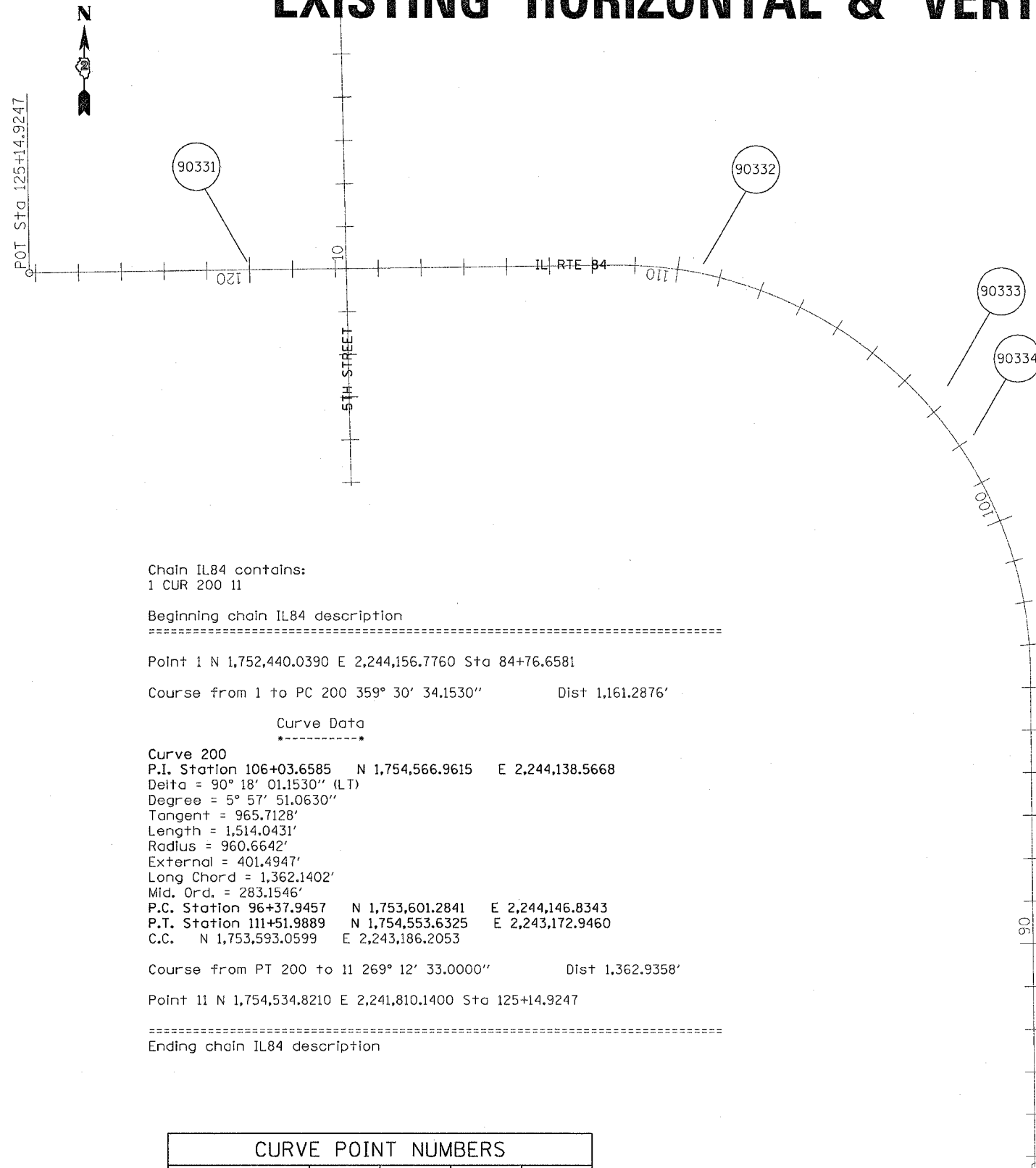


EXISTING HORIZONTAL & VERTICAL CONTROL

F.A.P. RTE.	SECTION	COUNTY	TOTAL SHEETS	SHEET NO.
595	(2R) M&TS	HENRY	90	15
STA.		TO STA.		
FED. ROAD DIST. NO.		ILLINOIS	FED. AID PROJECT	
CONTRACT NO. 64A10				



Chain IL84 contains:
1 CUR 200 11

Beginning chain IL84 description

Point 1 N 1,752,440.0390 E 2,244,156.7760 Sta 84+76.6581

Course from 1 to PC 200 359° 30' 34.1530" Dist 1,161.2876'

Curve Data

Curve 200

P.I. Station 106+03.6585 N 1,754,566.9615 E 2,244,138.5668

Delta = 90° 18' 01.1530" (LT)

Degree = 5° 57' 51.0630"

Tangent = 965.7128'

Length = 1,514.0431'

Radius = 960.6642'

External = 401.4947'

Long Chord = 1,362.1402'

Mid. Ord. = 283.1546'

P.C. Station 96+37.9457 N 1,753,601.2841 E 2,244,146.8343

P.T. Station 111+51.9889 N 1,754,553.6325 E 2,243,172.9460

C.C. N 1,753,593.0599 E 2,243,186.2053

Course from PT 200 to 11 269° 12' 33.0000" Dist 1,362.9358'

Point 11 N 1,754,534.8210 E 2,241,810.1400 Sta 125+14.9247

Ending chain IL84 description

CURVE POINT NUMBERS				
CURVE	PI	CC	PC	PT
200	200	201	202	203

SURVEY WORK POINTS

POINT	NORTH	EAST	ELEVATION	CHAIN	STATION	OFFSET	DESCRIPTION
100	1754531.6220	2243055.7450	587.2060	1184	112+69.4825	20.3908' LT	SURVEY POINT, NAIL
101	1754495.8450	2242671.2870	574.9870	1184	116+54.3977	50.8580' LT	SURVEY POINT, NAIL
102	1754503.2000	2242570.5880	575.2080	1184	117+54.9856	42.1138' LT	SURVEY POINT, NAIL

BENCH MARKS

POINT	NORTH	EAST	ELEVATION	CHAIN	STATION	OFFSET	DESCRIPTION
431	1754485.7520	2242371.6630	574.6720	1184	119+54.1325	56.8146' LT	SIGN FOUNDATION, CHISELED "X"
432	1754474.6620	2243365.3220	592.3320	1184	109+46.1703	61.0503' LT	POWER POLE, BOLT

APPARENT PROPERTY CORNERS

POINT	NORTH	EAST	ELEVATION	CHAIN	STATION	OFFSET	DESCRIPTION
700	1754594.4220	2242530.0340	574.7150	1184	117+94.2767	49.6592' RT	PROPERTY CORNER, PIN
701	1754470.1650	2242904.6400	578.8220	1184	114+21.4214	79.7564' LT	PROPERTY CORNER, PIN
702	1754467.9130	2242742.7050	575.9640	1184	115+83.3720	79.7731' LT	PROPERTY CORNER, PIN
703	1753754.9440	2244083.0640	590.1150	1184	98+01.2753	49.3124' LT	R.O.W MARKER, BACK
704	1754405.8180	2243568.3140	589.8610	1184	107+16.5421	62.5646' LT	R.O.W MARKER, BACK

FILE NAME = #FILE#
LEVELS = #LEVELS#
SCALE = #SCALE#
PLOT DATE = #PLOT DATE#
OPERATOR = #OPERATOR#
REF = #REF#
REF = #REF#
REF = #REF#