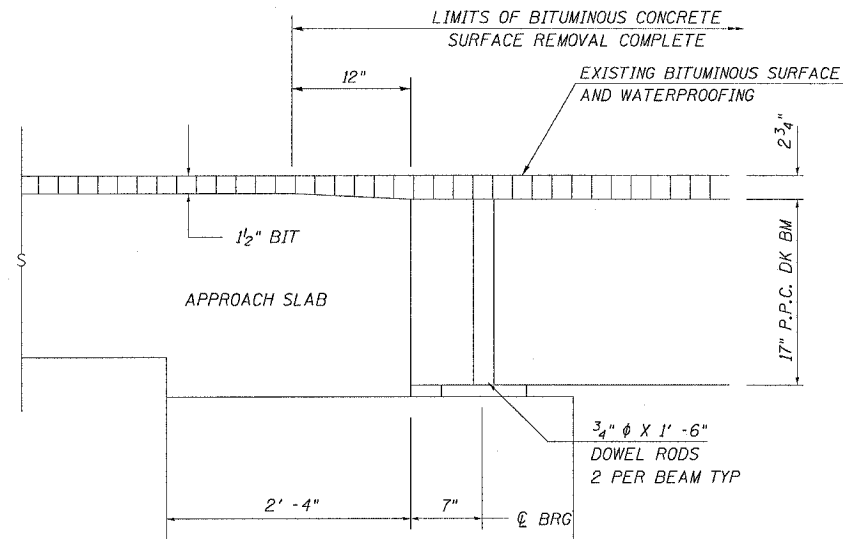
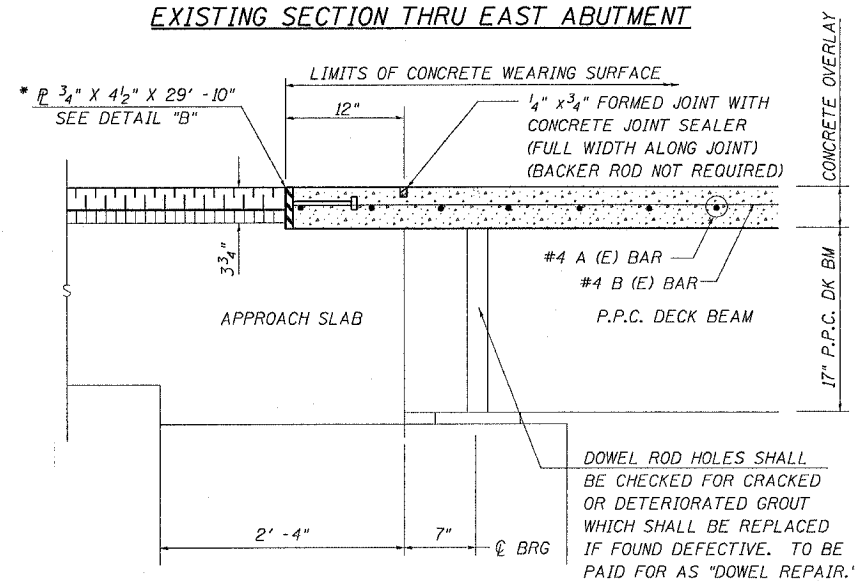


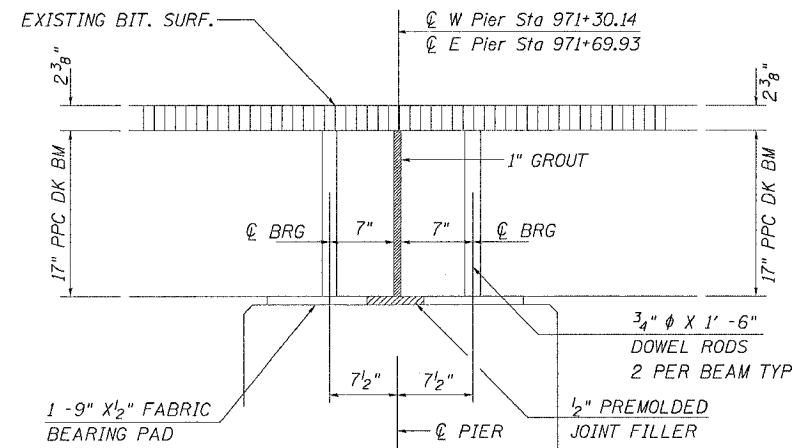
F.A.S. RTE.	SECTION	COUNTY	TOTAL SHEETS	SHEET NO.
2079	16BR-M	OGLE	14	8
STA.		TO STA.		
FED. ROAD DIST. NO.	ILLINOIS	FED. AID PROJECT		



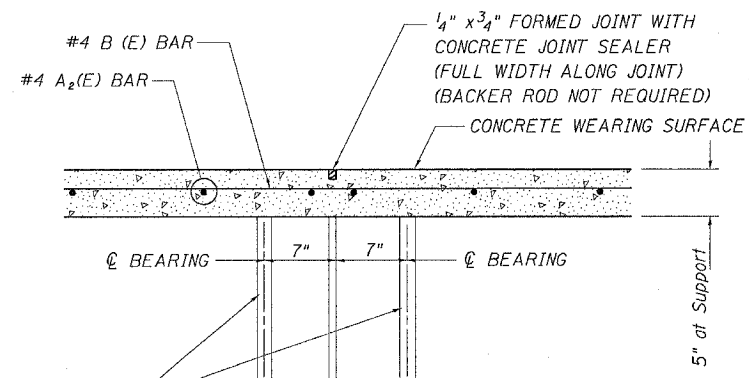
EXISTING SECTION THRU EAST ABUTMENT



PROPOSED SECTION THRU EAST ABUTMENT

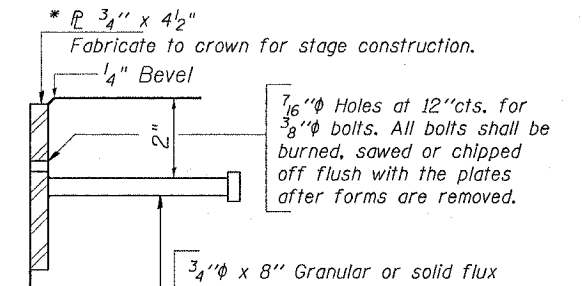


EXISTING SECTION THRU PIER



DOWEL ROD HOLES SHALL BE CHECKED FOR CRACKED OR DETERIORATED GROUT WHICH SHALL BE REPLACED IF FOUND DEFECTIVE. TO BE PAID FOR AS "DOWEL REPAIR."

PROPOSED SECTION THRU PIER



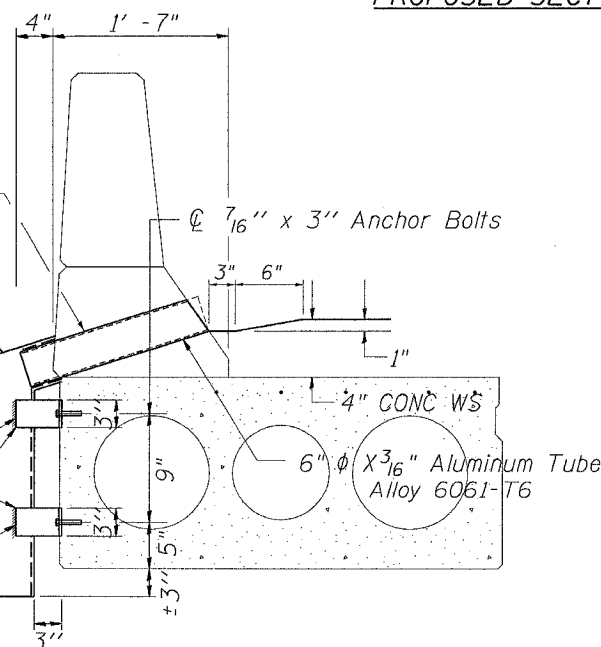
DETAIL "B"

Epoxy grout Floor Drain in place. Cost included in Concrete Superstructure.

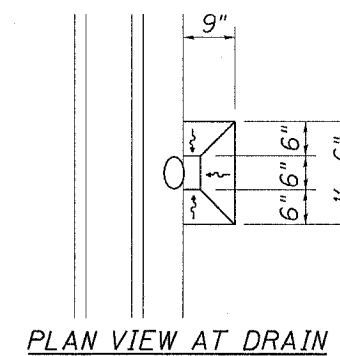
Leave end open for clean out

Bent  $\phi$  1/4" x 3" x 8" (Aluminum)

Drain Extension 6"  $\phi$  x 3/16" Aluminum Tube Alloy 6061-T6



SECTION AT FLOORDRAIN



PLAN VIEW AT DRAIN

NOTE: EXISTING REINFORCEMENT BARS & COIL LOOP ANCHOR DEVICES EXTENDING INTO THE REMOVAL AREAS SHALL BE CLEANED, STRAIGHTENED AND INCORPORATED INTO THE NEW CONSTRUCTION. ANY REINFORCEMENT BARS OR COIL LOOPS THAT ARE DAMAGED DURING CONCRETE REMOVAL SHALL BE REPLACED WITH APPROVED BAR SPLICER OR ANCHORAGE SYSTEM. COST INCLUDED WITH CONCRETE REMOVAL.

FIXED JOINT AND FLOORDRAIN DETAILS  
 US 52 OVER ELKHORN CREEK  
 FAS ROUTE 2079 (US 52)  
 SECTION 16BR-M  
 OGLE COUNTY  
 STRUCTURE NUMBER 071-0070