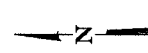
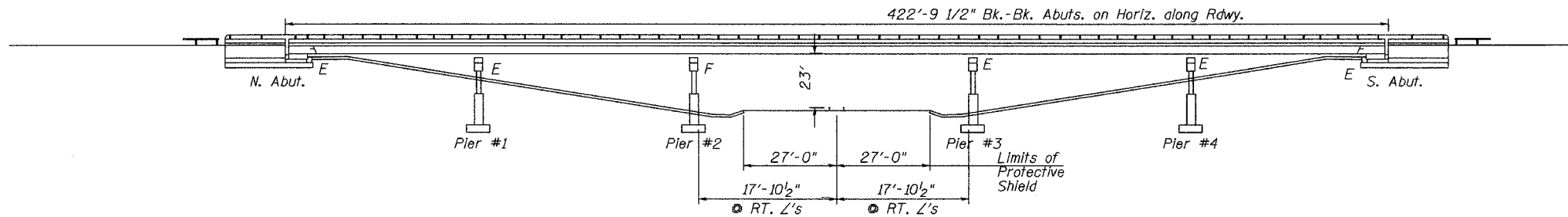
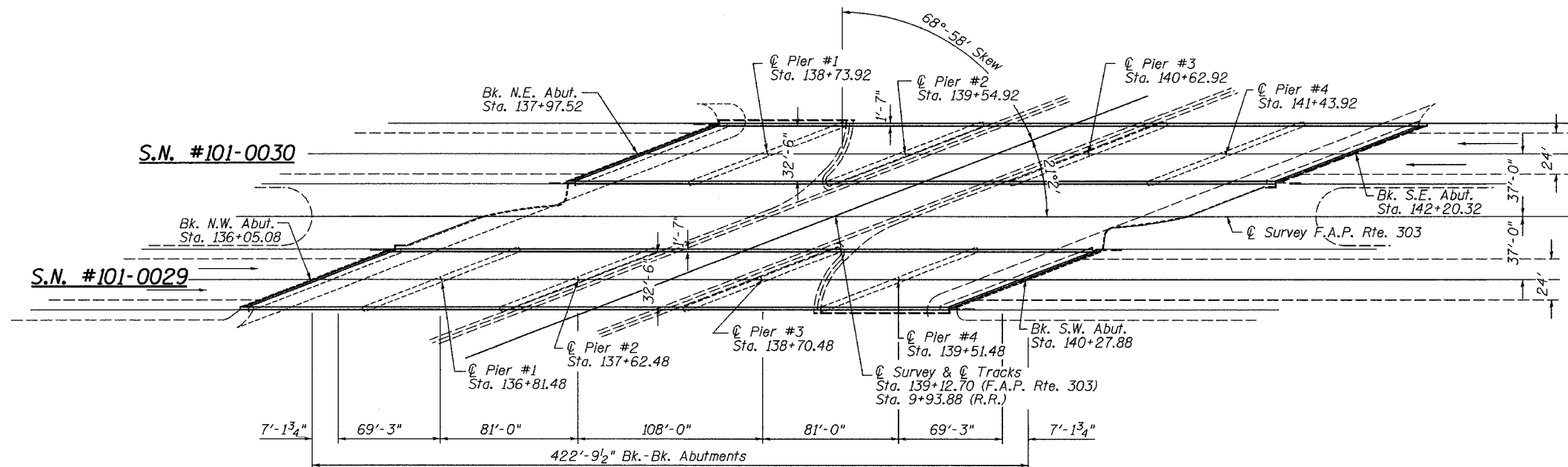


STATE OF ILLINOIS
DEPARTMENT OF TRANSPORTATION

ROUTE NO.	SECTION	COUNTY	SHEET NO.	SHEET NO.
	*	Winnebago	36	9
SHEETS				
* (5VB,5HB,1-2HB)M CONTRACT #64A88				



ELEVATION



PLAN

GENERAL NOTES

All new structural steel shall conform to AASHTO Classification M-270, Gr. 36 unless otherwise noted.

Reinforcement bars shall conform to the requirements of AASHTO M-31, or M-322, Grade 60.

Existing longitudinal reinforcement extending into the removed area shall be cleaned, straightened and incorporated into the new construction. Existing transverse reinforcement may be cut as shown and removed.

These structures will retain the same numbers 101-0029 & 101-0030.

Plan dimensions and details relative to existing structure have been taken from existing plans and are subject to nominal construction variations. It shall be the Contractor's responsibility to verify such dimensions and details in the field and make necessary approved adjustments prior to construction or ordering of materials. Such variations shall not be cause for additional compensation for a change in the scope of work however, the Contractor will be paid for the quantity actually furnished at the unit price bid for the work.

The existing structural steel coating contains lead. The contractor should take appropriate precautions to deal with the presence of lead on this project.

During construction operations, the Contractor shall provide temporary shielding 20 feet in width centered about the tracks of the railroad crossed. See Special Provisions.

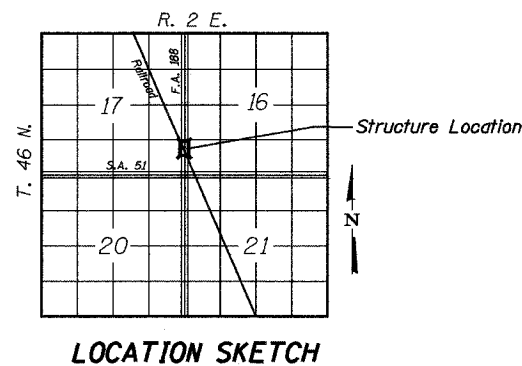
TOTAL BILL OF MATERIAL - 2 BRIDGES

ITEM	UNIT	TOTAL
Bituminous Concrete Removal (Deck)	Sq Yd	2910
Bituminous Concrete Surface Coarse, Superpave, Mix "D" N90	TON	327
Deck Slab Repair (Full Depth - Type 1)	Sq Yd	75
Deck Slab Repair (Full Depth - Type 2)	Sq Yd	44
Deck Slab Repair (Partial Depth)	Sq Yd	270
Protective Shield	Sq. Yd.	360
Plug Existing Deck Drains	Each	192
Floor Drains	Each	92
Neoprene Expansion Joint 2"	Foot	176
Neoprene Expansion Joint 4"	Foot	176
Railroad Protective Liability Insurance	L.Sum	1
Sheet Waterproofing Membrane System	Sq Yd	2910
Formed Concrete Repair (Depth Equal to or less than 5")	Sq Ft	93



Scott A. Brown 3/1/05
LICENSE EXPIRES 11/30/2006

DESIGNED	SB, DP
CHECKED	SB
DRAWN	BH, BS
CHECKED	SB



GENERAL PLAN AND ELEVATION
F.A.P. Route 303 &
FAP 738 (IL 251) OVER Railroad
SECTION (5VB, 5HB, 1-2HB)M
WINNEBAGO COUNTY
SN 101-0029 & 101-0030