

STATE OF ILLINOIS
DEPARTMENT OF TRANSPORTATION

ROUTE NO.	SECTION	COUNTY	TOTAL SHEETS	SHEET	SHEET NO. 9
	*	Winnebago	36	17	9 SHEETS
FED. ROAD DIST. NO. 7	ILLINOIS	FED. AID PROJECT			

* (5VB, 5HB, 1-2HB)M CONTRACT #64A88

Joint Size	"C" at 50°F	"D" at 50°F
2"	2"	1 1/2" Min.
2 1/2"	2 1/2"	1 3/4" Min.
4"	3"	2 1/2" Min.

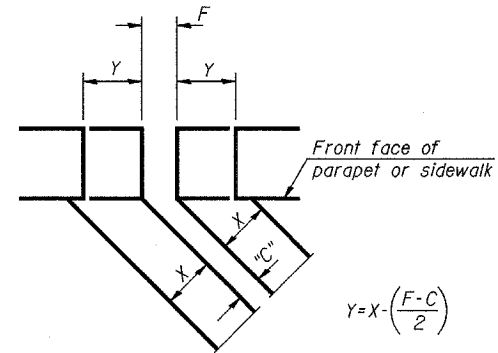
INSTALLATION NOTES

- Install continuous seal in roadway, parapet, curb, and sidewalk.
- Install anchor blocks as indicated.

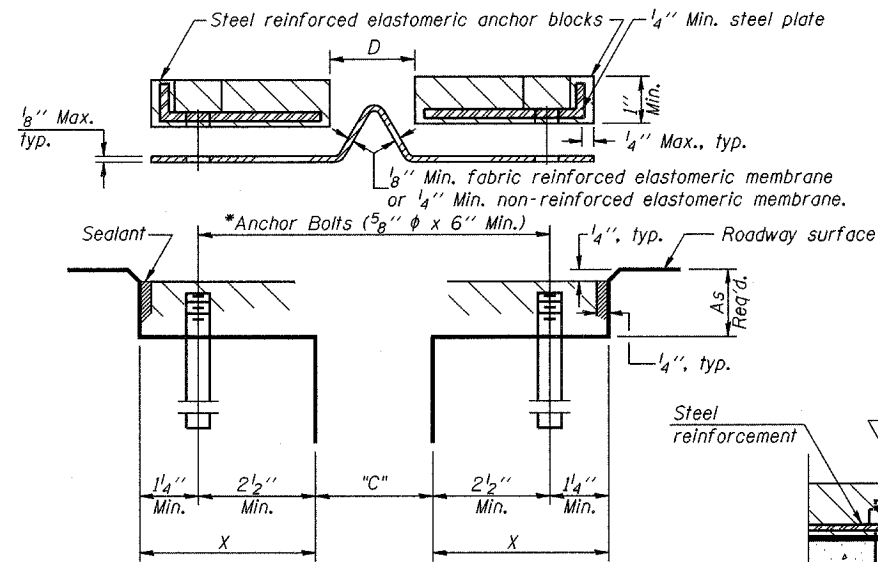
Note A:
Maximum spacing of anchor bolts shall be 12" centers.

SKEW LIMITATIONS

The details of the anchor blocks and the elastomeric membrane in the parapet, as shown, are for up to 50° skews. For skews greater than 50°, the anchor blocks and the elastomeric membrane, installed according to dimension "D", might require modifications to insure a minimum clearance of 1 1/2" from centerline of anchor studs to edge of parapet opening. The anchor blocks and the elastomeric membrane shall also be installed to the top of the parapet with the anchor studs spaced at ±12" cts.



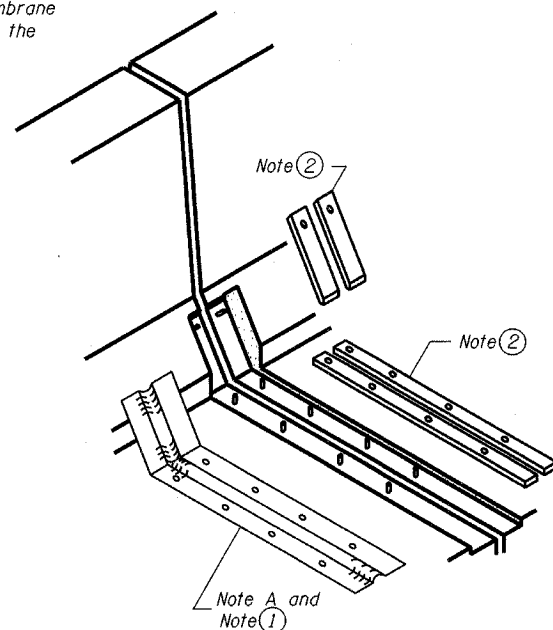
FORMING BLOCKOUT SKETCH



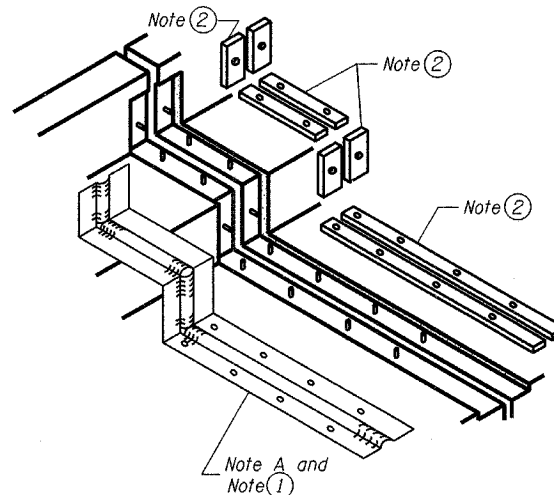
CROSS SECTION

*Epoxy Grouted According to Section 584 of the Standard Specifications

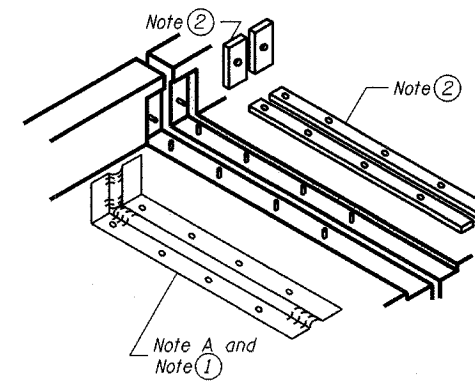
ANCHOR BLOCK WITH ASPHALT SURFACE



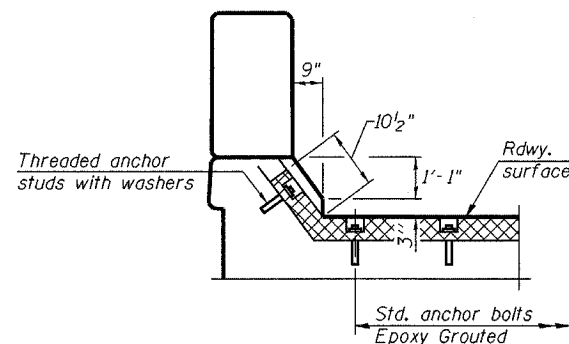
AT PARAPET



AT SIDEWALK OR MEDIAN



AT WALL



AT PARAPET

DESIGNED	SB, DP
CHECKED	SB
DRAWN	BH, BS
CHECKED	SB

CONTINUOUS SEAL TYPE
NEOPRENE EXPANSION JOINTS
F.A.P. Route 303 & F.A.P. Route 738
(IL 251) OVER Railroad
SECTION (5VB,5HB,1-2HB)M
WINNEBAGO COUNTY
SN 101-0029 & 101-0030