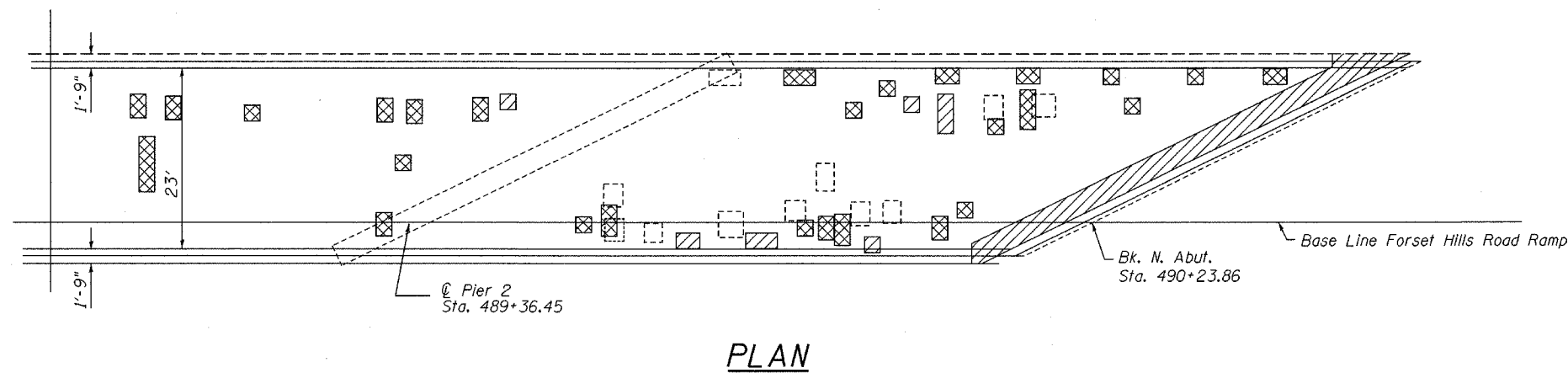
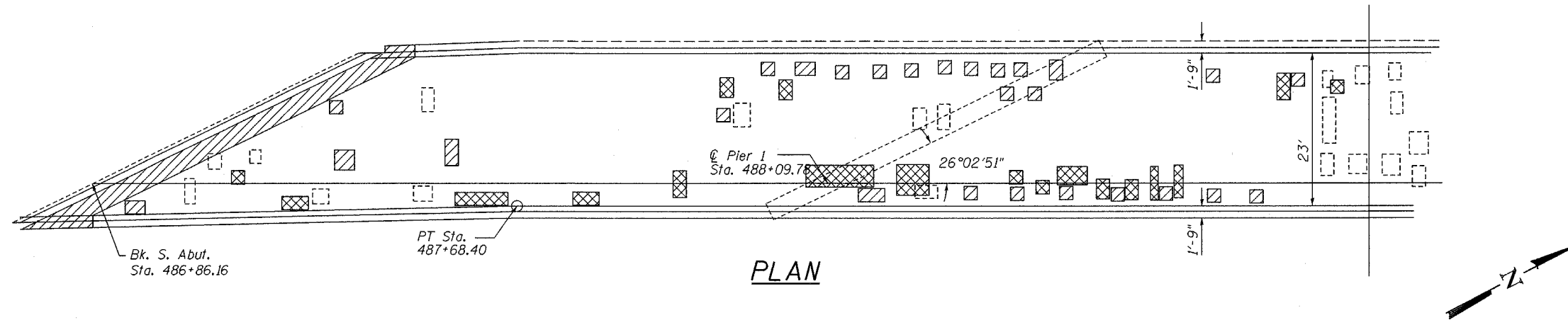


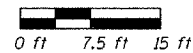
STATE OF ILLINOIS  
DEPARTMENT OF TRANSPORTATION

ROUTE NO.	SECTION	COUNTY	TOTAL SHEETS	SHEET NO.	SHEET NO. <u>3</u>
S.D.L.	*	Winnebago	36	29	<u>8</u> SHEETS
F.A.P.					
FED. ROAD DIST. NO. 7	ILLINOIS	FED. AID PROJECT			

\* Section (5VB,5HB,1-2HB)M Contract #64A88



- Deck Slab Repair (Partial)
- Deck Slab Repair (Full Depth)
- Existing Deck Slab Repair



DESIGNED	SB, DP
CHECKED	SB
DRAWN	BH, BS
CHECKED	SB

**BILL OF MATERIAL**

ITEM	UNIT	TOTAL
Deck Slab Repair (Partial)	Sq. Yd.	80
Deck Slab Repair (Full Depth, Type 1)	Sq. Yd.	25
Deck Slab Repair (Full Depth, Type 2)	Sq. Yd.	13

Deck Survey Date: October 15, 2004

**NOTES:**  
The plan quantities for Deck Slab Repair (Partial and Full Depth) are estimated quantities from a deck survey provided by others. The areas shown on the deck repair plans for each structure are potential areas of Deck Slab Repair. The Deck Slab Repair quantities in Bills of Material are included as contingencies to be used as directed by the engineer during construction. The actual locations and quantity of Deck Slab Repair on all structures shall be determined by the resident engineer in the field. Actual repair locations shall be shown on the same as-built plans.

**DECK REPAIR PLAN**  
Forest Hills Road Ramp Over  
F.A.P. 303 & F.A.P. 738 (IL 251)  
SECTION (5VB,5HB,1-2HB)M  
WINNEBAGO COUNTY  
SN 101-0123