

INDEX OF SHEETS

- 1 COVERSHEET
- 2 GENERAL NOTES
- 3-5 SUMMARY OF QUANTITIES
- 6-7 TYPICAL SECTION
- 8 SCHEDULE OF QUANTITIES
- 9-13 DETAILS
- 14 HIGHWAY STANDARDS, PLAN NOTES & BILL OF MATERIALS
- 15 SCHEDULE OF QUANTITIES
- 20 ALIGNMENT, TIES & BENCHMARKS
- 21 EXISTING & PROPOSED DRAINAGE & UTILITY PLANS
- 34 CROSS SECTIONS
- 68 TEST HOLE CERTIFICATION FORMS
- 74 STANDARDS WATERMAN DETAILS & NOTES

STANDARDS

- 000001-04 STANDARD SYMBOLS, ABBREVIATIONS AND PATTERNS
- 001006 DECIMAL OF AN INCH AND OF A FOOT
- 280001-02 TEMPORARY EROSION CONTROL SYSTEMS
- 442201-01 CLASS C AND D PATCHES
- 542101 REINF CONC END SECTIONS FOR PIPE CULVERTS 375 mm (15") THRU 900 mm (36") DIAMETER AT RIGHT ANGLES WITH ROADWAY
- 542206 REINF CONC END SECTIONS FOR PIPE CULVERTS 1050 mm (42") THRU 1500 mm (60") DIAMETER SKEWED WITH ROADWAY
- 602001 CATCH BASIN, TYPE A
- 602301 INLET, TYPE A
- 602401 MANHOLE, TYPE A
- 602701 CAST IRON STEPS
- 604001-02 FRAME AND LIDS, TYPE 1
- 604006-02 FRAME AND GRATE, TYPE 3
- 604036-01 GRATE, TYPE 8
- 604046-01 FRAME AND GRATE, TYPE 10
- 606001-02 CONCRETE CURB TYPE B AND COMBINATION CONCRETE CURB AND GUTTER
- 701001-01 OFF-ROAD OPERATIONS 2L, 2W, MORE THAN 4.5 m (15') AWAY
- 701006-02 OFF-ROAD OPERATIONS 2L, 2W, 4.5 m (15') TO 600 mm (24") FROM PAVEMENT EDGE
- 701011-01 OFF-ROAD MOVING OPERATIONS 2L, 2W, DAY ONLY
- 701306-01 LANE CLOSURE, 2L, 2W, SLOW MOVING OPERATIONS DAY ONLY, FOR SPEEDS P 45 MPH
- 701311-02 LANE CLOSURE, 2L, 2W, MOVING OPERATIONS - DAY ONLY
- 701501-03 URBAN LANE CLOSURE, 2L, 2W, UNDIVIDED
- 702001-05 TRAFFIC CONTROL DEVICES
- 780001-01 TYPICAL PAVEMENT MARKINGS
- 781001-02 TYPICAL APPLICATIONS RAISED REFLECTIVE PAVEMENT MARKERS



FULL SIZE PLANS HAVE BEEN PREPARED USING STANDARD ENGINEERING SCALES, REDUCED SIZED PLANS WILL NOT CONFORM TO STANDARD SCALES. IN MAKING MEASUREMENTS ON REDUCED PLANS, THE ABOVE SCALES MAY BE USED.

MICROFILMED _____
 REEL NUMBER _____
 AWARDED _____
 RESIDENT ENGINEER _____
 AS BUILT CHANGES WERE MADE
 ON THE FOLLOWING SHEETS _____

JULIE 1-800-892-0123

DISTRICT 3 NO. (815) 434-6131

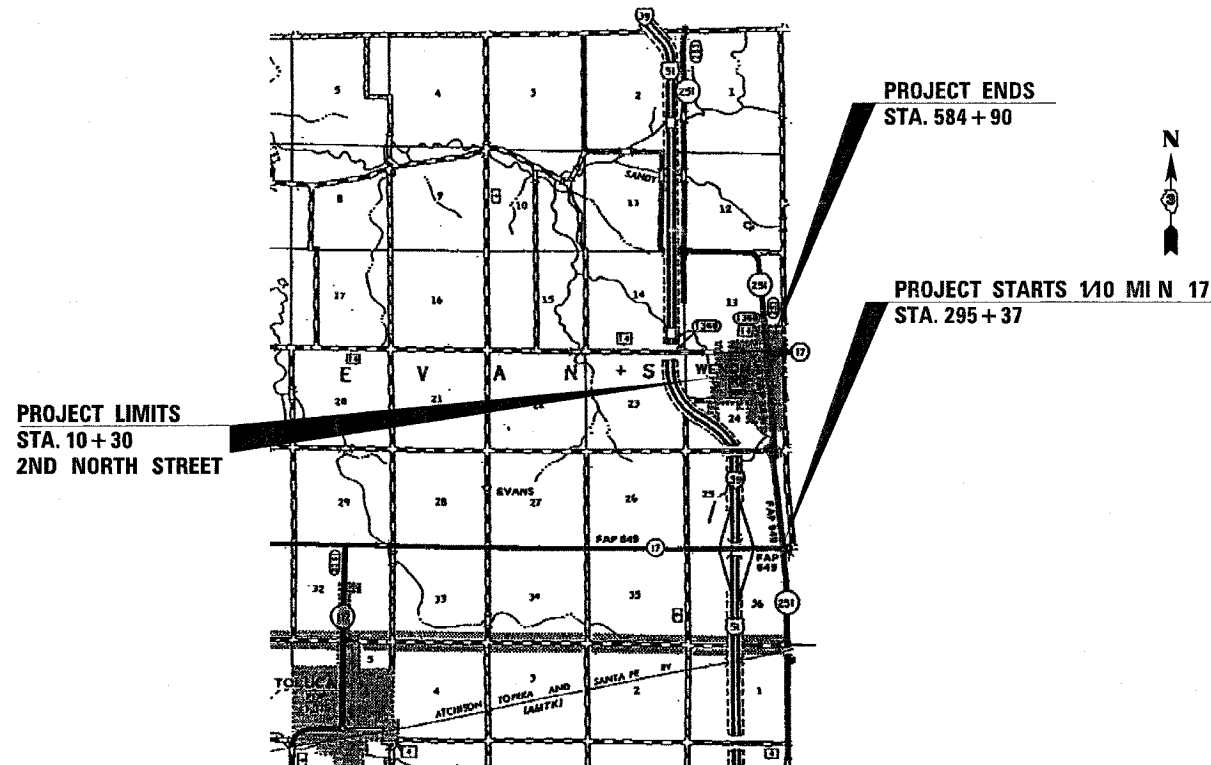
PROJECT ENGINEER: DAN DRAPER
UNIT CHIEF: PAT BRABOY
TOWNSHIP: EVANS

CONTRACT NO. 66403

STATE OF ILLINOIS
DEPARTMENT OF TRANSPORTATION
DIVISION OF HIGHWAYS
PLANS FOR PROPOSED
FEDERAL AID HIGHWAY
FAP ROUTE 649 (IL 17/L 251)
SECTION 67(T)RS-2&I
PROJECT F-0649(013)
MARSHALL COUNTY

C-93-177-03

IL 17: FROM 0.34 MILES S. OF SOUTH 5TH ST. TO ELM ST. IN WENONA

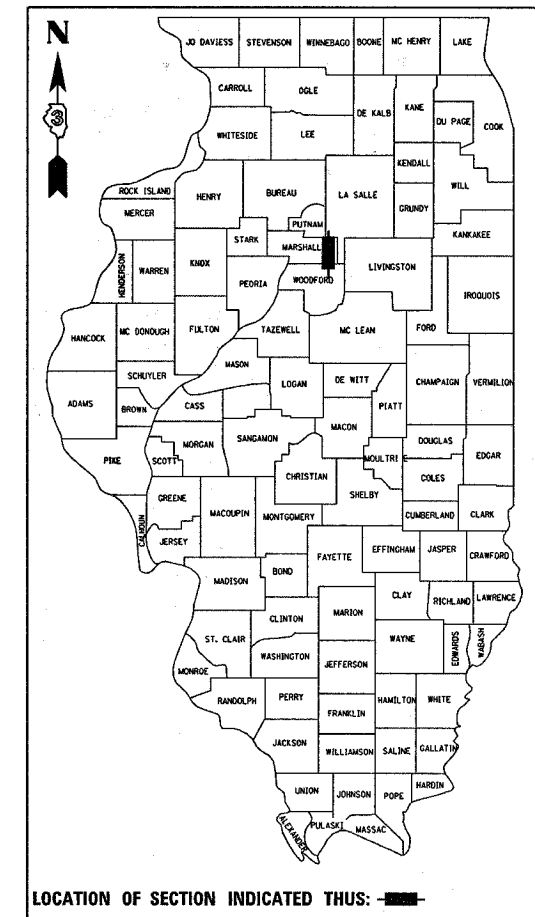


LOCATION MAP
NOT TO SCALE

GROSS LENGTH = 9768 FT. = 1.85 MI.
 NET LENGTH = 9768 FT. = 1.85 MI.

F.A.P. RTE.	SECTION	COUNTY	TOTAL SHEETS	SHEET NO.
649		MARSHALL	74	1

ILLINOIS PROJECT
 *67(T)RS-2&I
D-93-065-03



FUNCTION CLASSIFICATION-MINOR ARTERIAL(RURAL)
 2003 ADT = 3800
 P.V. = 92.1% S.U. = 5.3% M.U. = 2.6%

STATE OF ILLINOIS
 DEPARTMENT OF TRANSPORTATION
 DIVISION OF HIGHWAYS

SUBMITTED APRIL 7 2005

 DEPUTY DIRECTOR OF HIGHWAYS, REGION ENGINEER

May 13 2005

 ENGINEER OF DESIGN AND ENVIRONMENT

May 13 2005

 DIRECTOR OF HIGHWAYS, CHIEF ENGINEER

**PRINTED BY THE AUTHORITY
 OF THE STATE OF ILLINOIS**

APRIL 6, 2005 /ed06503/cover.stn.dgn